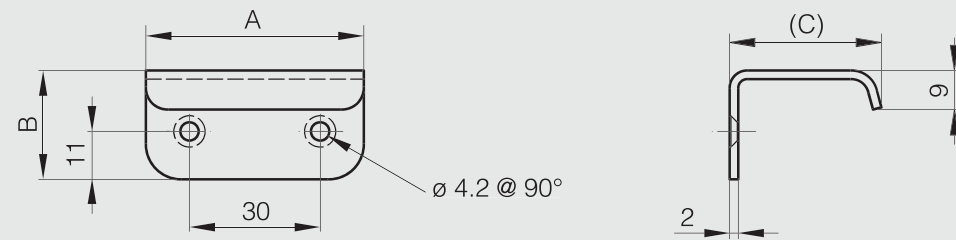




Rear mounted grab handles 50 mm

STEEL

Part number	Material	Finish	A	B	C	Weight (g)
19-1-3798	steel	chrome plated	50	25	35	46



Ledge handles

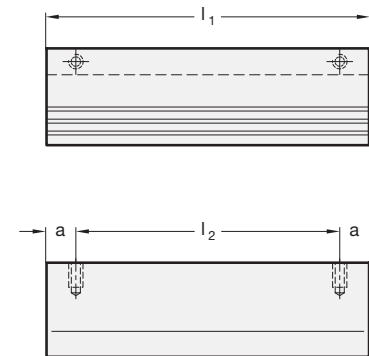
Aluminium

SPECIFICATION

Aluminium
plastic coated
black, RAL 9005, textured finish **SW**
silver, RAL 9006, textured finish **SR**
anodized, natural colour **EL**
blank, tumbled **BL**

INFORMATION

A typical field of application is on hinged protective doors on machinery and installations.
Manufactured from aluminum extrusion allows **special lengths** and material sold by the meter to be realised easily.



Stainless Steel-Ledge handle

SPECIFICATION

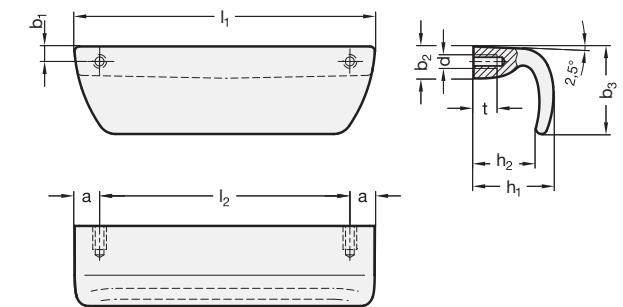
Stainless Steel precision casting **A4**
- AISI 316
- matte shot-blasted **GS**

INFORMATION

The GN 730.5 Stainless Steel-Ledge handle is used on doors, guards and hatches on machines, as well as on drawers and pull-out units. Due to the A4 material used, the handle is intended especially for use in corrosive environments with aggressive media. The ledge handle is made in a way that does not allow pooling of fluids, which makes cleaning easier and prevents build up of residue and bacteria. It can be attached from the back side via the mounting thread. Alternatively, the handles can be welded from the front.

ON REQUEST

- polished or plastic coated



GN 730

Description	l1 ±0.25	d	a	b1	b2	h1	h2	l2 ±0.2 min.	t	Δ
GN 730-110-BL	110	M 6	10	9.5	33	32	24	90	9	94
GN 730-110-EL	110	M 6	10	9.5	33	32	24	90	9	98
GN 730-110-SR	110	M 6	10	9.5	33	32	24	90	9	100
GN 730-110-SW	110	M 6	10	9.5	33	32	24	90	9	100
GN 730-125-BL	125	M 6	10	9.5	33	32	24	105	9	105
GN 730-125-EL	125	M 6	10	9.5	33	32	24	105	9	108
GN 730-125-SR	125	M 6	10	9.5	33	32	24	105	9	110
GN 730-125-SW	125	M 6	10	9.5	33	32	24	105	9	110
GN 730-140-BL	140	M 6	10	9.5	33	32	24	120	9	120
GN 730-140-EL	140	M 6	10	9.5	33	32	24	120	9	120
GN 730-140-SR	140	M 6	10	9.5	33	32	24	120	9	125
GN 730-140-SW	140	M 6	10	9.5	33	32	24	120	9	125

GN 730.5

STAINLESS STEEL

Description	l1	d	a	b1	b2	b3	h1	h2	l2	t min.	Δ
GN 730.5-A4-120-GS	120	M 6	10	6	12.5	35	32	25	100	9	347

Ledge handles

SPECIFICATION

Aluminium
plastic coated
black, RAL 9005, textured finish **SW**
anodized, natural colour **EL**

End caps
Plastic
Technopolymer (Polyamide PA)
black-grey

INFORMATION

Typical applications for ledge handles GN 430 include swivel or sliding doors on protective doors and equipment. They are also suitable for use as drawer handles.

The screw channel for screw sizes M6 (extruded aluminium) allows an optional number of fixing screws in any position within the dimension l_2 .

Special lengths can be manufactured from relatively small quantities upwards.

ON REQUEST

- Special lengths

TECHNICAL INFORMATION

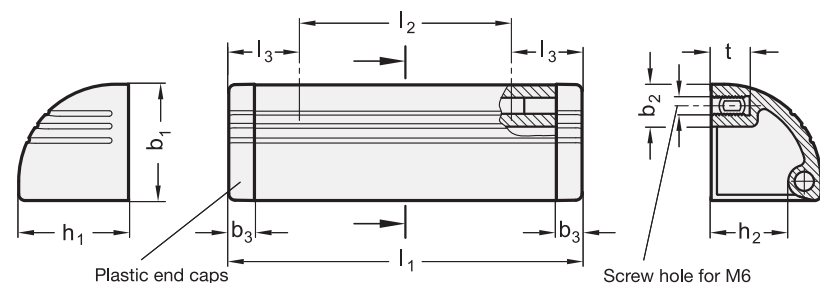
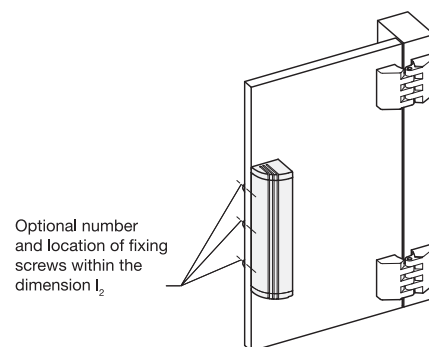
- Plastic characteristics (see page A2)

MOUNTING INFORMATION

- Minimum screw-in-depth: 10 mm
- Max. load (screw): 400 N
- Max. tightening torque: 4 Nm



EXAMPLE OF APPLICATION



*Complete with colour index of the Ledge handles (SW or EL)

SW **EL**
RAL9005 anodized

GN 430

Description	l1	b1	b2	b3	h1	h2	l2	l3	t	⚖
GN 430-110-*	110	36	13	8	34	24	66	22	12	86
GN 430-130-*	130	36	13	8	34	24	86	22	12	101
GN 430-150-*	150	36	13	8	34	24	106	22	12	117
GN 430-200-*	200	36	13	8	34	24	156	22	12	159
GN 430-250-*	250	36	13	8	34	24	206	22	12	196
GN 430-300-*	300	36	13	8	34	24	256	22	12	233
GN 430-400-*	400	36	13	8	34	24	356	22	12	314
GN 430-500-*	500	36	13	8	34	24	456	22	12	388

Ledge handles

with lettering block

SPECIFICATION

Aluminium
plastic coated
black, RAL 9005, textured finish **SW**
anodized, natural colour **EL**

Ends
plastic
Technopolymer (Polyamide PA)
black-grey

Lettering block
Insert groove supplied with:

paper strip 200 g/m², width 19.5 mm
bright white, age-resistant

PVC hard film
transparent



INFORMATION

Typical applications for ledge handles with lettering block GN 430.1 include swivel or sliding doors on protective doors and equipment. They are also suitable for use as drawer handles.

The screw channel for screw sizes M6 (extruded aluminium) allows an optional number of fixing screws in any position within the dimension l_2 .

Special lengths can be manufactured from relatively small quantities upwards.

In the design with lettering block, the end cap when delivered is mounted on one side such that the paper / film strip supplied can be lettered and pushed into the groove provided.

The paper strip can also be used as substrate for common lettering tape in widths below 18 mm.

ON REQUEST

- Special lengths
- single paper strips / film strips

TECHNICAL INFORMATION

- Plastic characteristics (see page A2)

MOUNTING INFORMATION

- Minimum screw-in-depth: 10 mm
- Max. load (screw): 400 N
- Max. tightening torque: 4 Nm

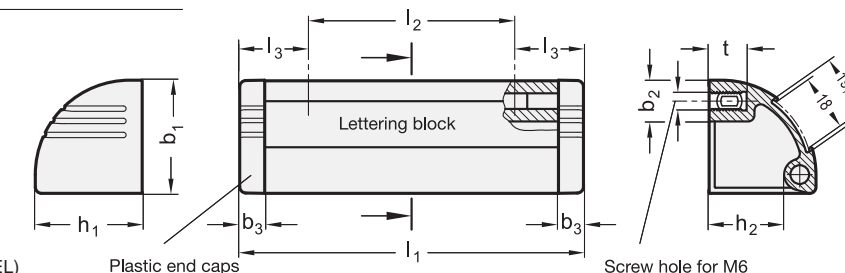
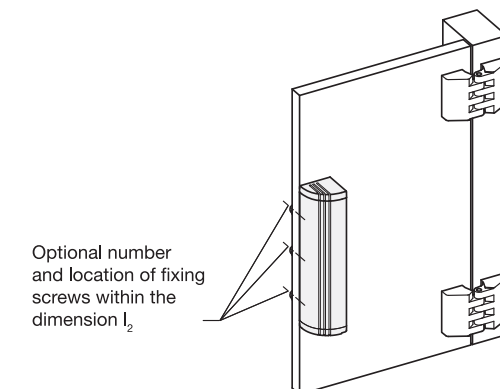
*Complete with colour index of the Ledge handles (SW or EL)

SW **EL**
RAL9005 anodized

GN 430.1

Description	l1	b1	b2	b3	h1	h2	l2	l3	t	⚖
GN 430.1-110-*	110	36	13	8	34	24	66	22	12	87
GN 430.1-130-*	130	36	13	8	34	24	86	22	12	101
GN 430.1-150-*	150	36	13	8	34	24	106	22	12	140
GN 430.1-200-*	200	36	13	8	34	24	156	22	12	154
GN 430.1-250-*	250	36	13	8	34	24	206	22	12	195
GN 430.1-300-*	300	36	13	8	34	24	256	22	12	234
GN 430.1-400-*	400	36	13	8	34	24	356	22	12	320
GN 430.1-500-*	500	36	13	8	34	24	456	22	12	400

EXAMPLE OF APPLICATION



Guard safety handles

Technopolymer

MATERIAL

Polyamide based (PA) technopolymer, black colour, matte finish.

SCREW COVER

Technopolymer in standard colours: black, orange, grey, yellow, light-blue, red, matte finish, snap-in assembly, removable by a screwdriver.

STANDARD EXECUTION

Pass-through holes for cylindrical-head screws with hexagon socket, hexagonal-head screws or standard lock nuts.

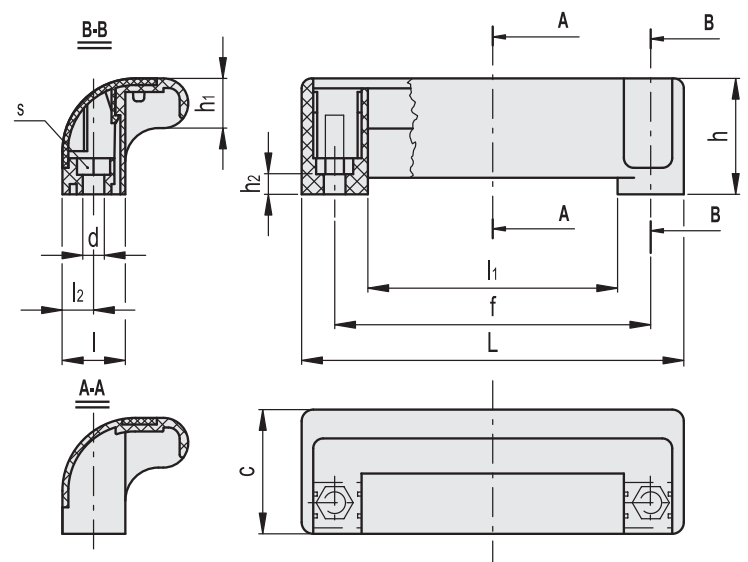
FEATURES AND APPLICATIONS

M.990 handles have been especially designed to fit machine guards or automation systems with double-leaf door. The special closed design of the handle represents a safety element for the operator's fingers. Moreover, the coloured cover improves the visibility of the handle and offers the possibility of product customisation.

TECHNICAL DATA

Tensile stress: F1 value reported in the table is the result of breaking tests carried out with an appropriate dynamometric equipment under the test conditions shown in the figure with ambient temperature.

Maximum tightening torque for screw assembly 3 Nm.



M.990

Code	Description	L	f±0.5	d	s	h	h1	h2	c	l	l1	l2	F1 [N]	⚖️
138511	M.990/115 EH-6-C9	115	93.5	6.5	10	35	15	6	37.5	19	75.5	9.5	900	33
138512	M.990/115 EH-6-C2	115	93.5	6.5	10	35	15	6	37.5	19	75.5	9.5	900	33
138513	M.990/115 EH-6-C3	115	93.5	6.5	10	35	15	6	37.5	19	75.5	9.5	900	33
138514	M.990/115 EH-6-C4	115	93.5	6.5	10	35	15	6	37.5	19	75.5	9.5	900	33
138515	M.990/115 EH-6-C5	115	93.5	6.5	10	35	15	6	37.5	19	75.5	9.5	900	33
138516	M.990/115 EH-6-C6	115	93.5	6.5	10	35	15	6	37.5	19	75.5	9.5	900	33

Guard safety handles

Technopolymer

MATERIAL

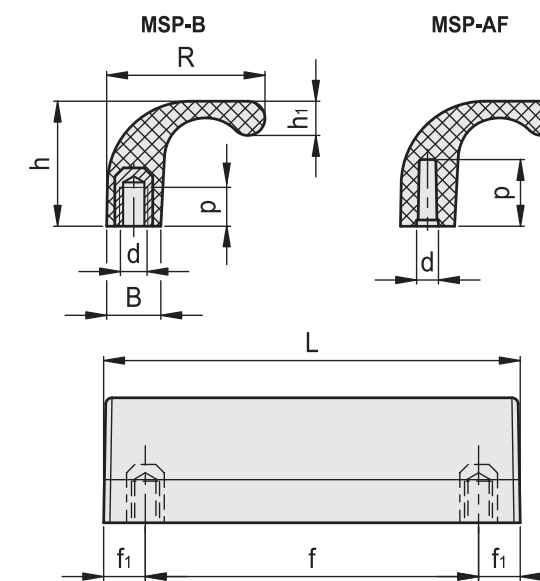
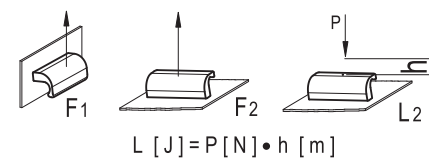
Glass-fibre reinforced polyamide based (PA) technopolymer, black colour, matte finish.

STANDARD EXECUTION

- **MSP-B**: brass boss, threaded blind hole. Fitting by means of no. 2 M6 screws, not included in the supply.
- **MSP-AF**: blind holes for fitting by means of no. 2 self-tapping screws for plastic materials Ø5 (UNI ISO 7049), not included in the supply.

TECHNICAL DATA

Tensile stress and impact strength: F1, F2 and L2 values reported in the table are the result of breaking tests, carried out with the appropriate dynamometric equipment, under the test conditions shown in the figure with ambient temperature.



Code	Description	L	f±0.5	d	f1	h	h1	B	R	P	F1 [N]	F2 [N]	L2 [J]	⚖️
43961	MSP.100-B M6	100	80	M6	10	30	8.7	13	38	12	3000	1900	10	54
43965	MSP.100-AF 4.8	100	80	4.5	10	30	8.7	13	38	14	700	900	7	47

Guard safety handles

Technopolymer

MATERIAL

Glass-fibre reinforced polyamide based (PA) technopolymer, grey-black colour, matte finish.

SCREW COVER

Technopolymer in Ergostyle colours, glossy finish. Supplied with the handle, press-fit assembly, removable by a screwdriver.

Available also as accessories sold separately (see table ECO.).

Code	Description
29864-*	ECO.S4-*

* Complete with colour index (C1, ..., C6).

STANDARD EXECUTIONS

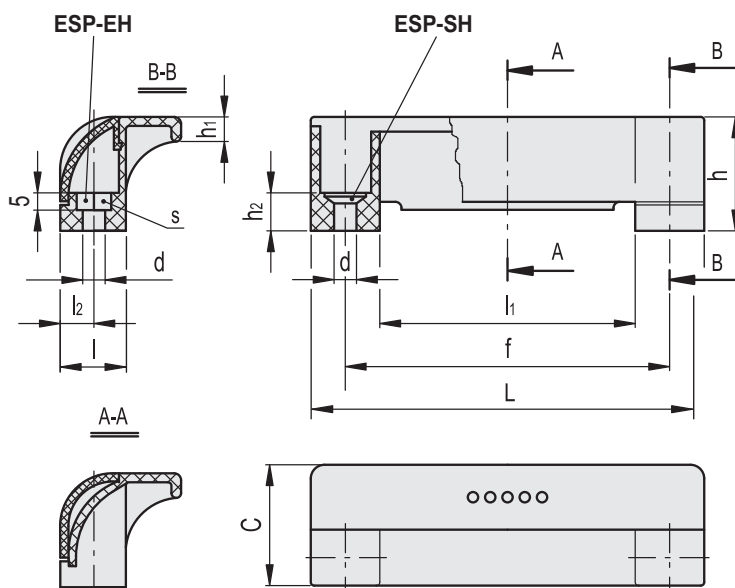
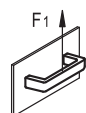
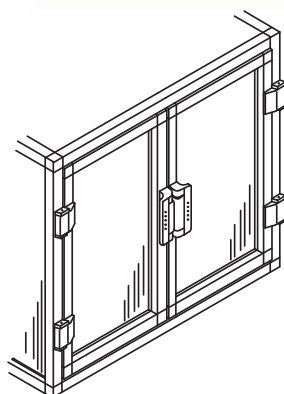
- **ESP-EH:** pass-through holes for cylindrical-head screws with hexagon socket, hexagonal-head screws or standard lock nuts.
- **ESP-SH:** pass-through holes for countersunk head screws.

FEATURES AND APPLICATIONS

ESP handles have been especially designed to fit machine guards or automation systems with double-leaf door. The special closed design of the handle represents a safety element for the operator's fingers. Moreover, the coloured cover improves the visibility of the handle and offers the possibility of product customisation.

TECHNICAL DATA

Tensile stress: F1 value reported in the table is the result of breaking tests carried out with an appropriate dynamometric equipment under the test conditions shown in the figure with ambient temperature.



* Complete with colour index, example: 265111-C1 ESP.110-EH-C1

C1 RAL7021 **C2** RAL2004 **C3** RAL7035 **C4** RAL1021 **C5** RAL5024 **C6** RAL3000

Code	Description	L	f±0.5	d	s	h	h1	h2	C	I	l1	l2	F1 [N]	⚖
265111-*	ESP.110-EH-*	114	93.5	6.5	10	33	7	11	35	19	74	9.5	900	33
265151-*	ESP.110-SH-*	114	93.5	6.5	-	33	7	11	35	19	74	9.5	900	33

Guard wing handles

Technopolymer

MATERIAL

Glass-fibre reinforced polyamide based (PA) technopolymer, grey-black colour, matte finish.

SCREW-COVERS

Technopolymer in Ergostyle colours, glossy finish. Supplied with the handle, press-fit assembly, removable by a screwdriver.

Available also as accessories sold separately (see table ECA.).

Code	Description
29865-*	ECA.P5-*

* Complete with colour index (C1, ..., C6).

STANDARD EXECUTIONS

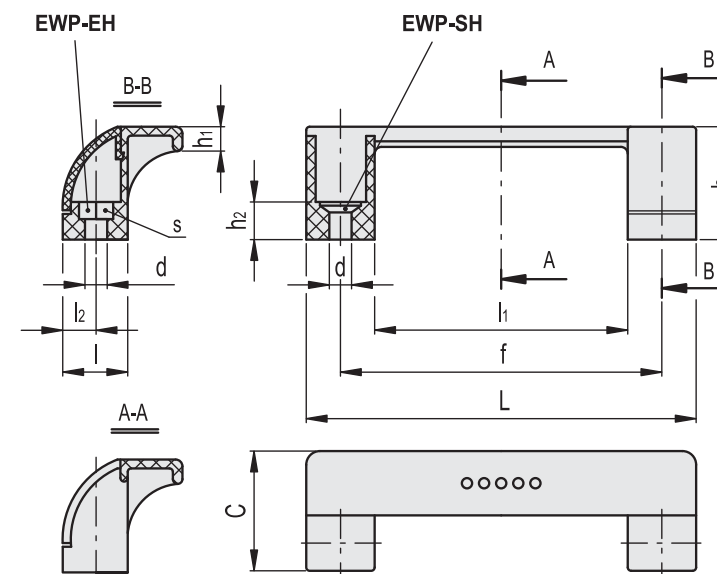
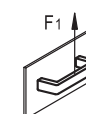
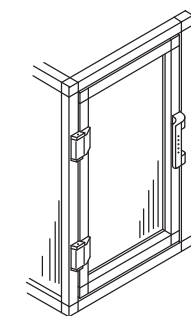
- **EWP-EH:** pass-through holes for cylindrical-head screws with hexagon socket, hexagonal-head screws or standard lock nuts.
- **EWP-SH:** pass-through holes for countersunk head screws.

FEATURES AND APPLICATIONS

EWP handles have been especially designed to fit machine guards or automation systems with single-leaf door. The coloured caps improve the visibility of the handle and offer the possibility of product customisation.

TECHNICAL DATA

Tensile stress: F1 value reported in the table is the result of breaking tests carried out with an appropriate dynamometric equipment under the test conditions shown in the figure with ambient temperature.



* Complete with colour index, example: 265211-C2 EWP.110-EH-C2

C1 RAL7021 **C2** RAL2004 **C3** RAL7035 **C4** RAL1021 **C5** RAL5024 **C6** RAL3000

Code	Description	L	f±0.5	d	s	h	h1	h2	C	I	l1	l2	F1 [N]	⚖
265211-*	EWP.110-EH-*	114	93.5	6.5	10	33	7	11	35	19	74	9.5	900	26
265251-*	EWP.110-SH-*	114	93.5	6.5	-	33	7	11	35	19	74	9.5	900	26

Side handles with protection

Technopolymer

MATERIAL

Glass-fibre reinforced polyamide based (PA) technopolymer, black colour, matte finish.

STANDARD EXECUTION

- **MLP-B**: brass bosses, threaded blind holes. Fitting by means of no. 2 screws M4, not included in the supply.
- **MLP-AF**: blind holes for fitting by means of no. 2 self-tapping screws for plastic materials Ø5 (UNI ISO 7049), not included in the supply.

TECHNICAL DATA

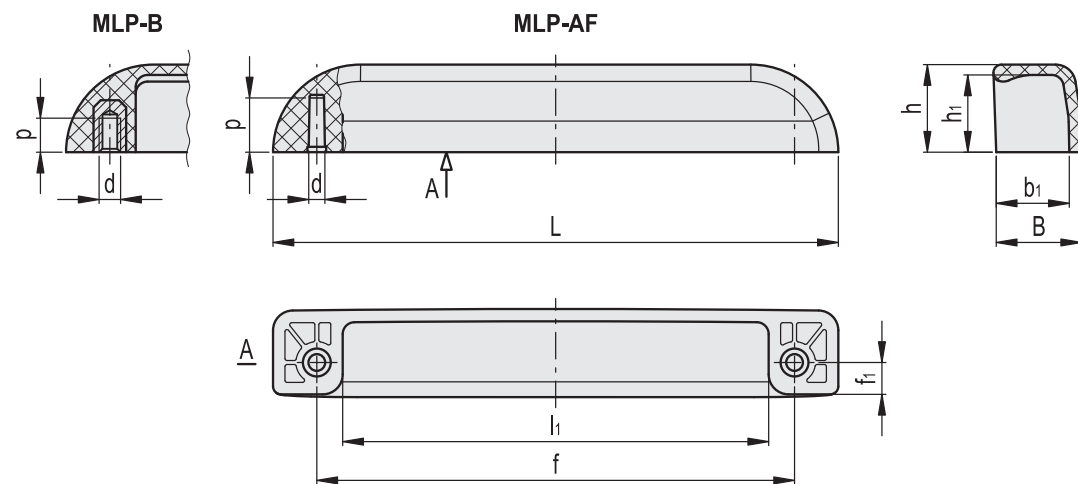
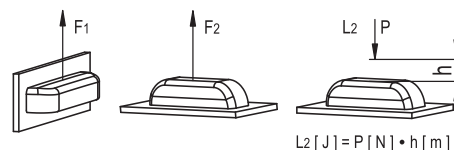
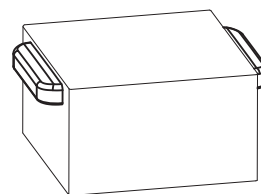
Tensile stress and impact strength: F1, F2 and L2 values reported in the table are the result of breaking tests, carried out with the appropriate dynamometric equipment, under the test conditions shown in the figure with ambient temperature.

FEATURES AND APPLICATIONS

Ergonomic and comfortable handles. If used in pairs they allow an easy lifting.



Application example



Code	Description	L	f±0.5	d	f1	h	h1	B	b1	l1	p	F1 [N]	F2 [N]	L2 [J]	⚖
43951	MLP.142-B M4	142	120	M4	8	22	19.5	21	18	107	10	3500	2800	3	36
43955	MLP.142-AF 4.8	142	120	4.5	8	22	19.5	21	18	107	13	3000	2800	3	31

METALIKA KACIN | Slovenija

Posloводство in skladišče:

Kacin Jožica s.p. METALIKA
Račeva 8
4226 ŽIRI

Podatki za račun:

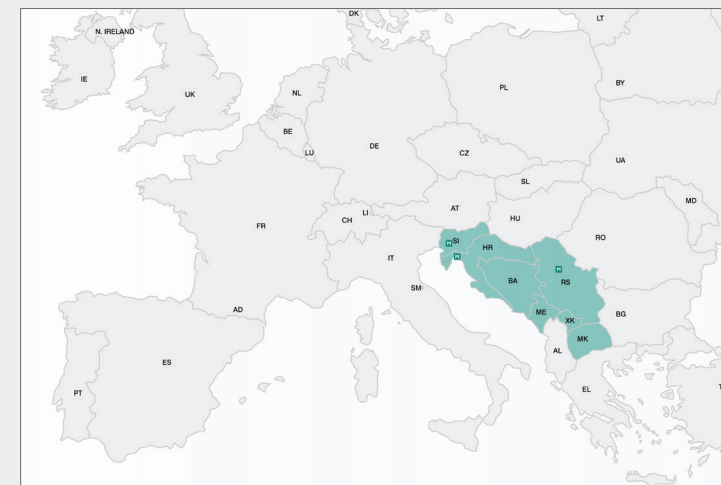
Kacin Jožica s.p. METALIKA
Bedrih 27
4226 ŽIRI
DDV ID: SI75800934

Delovni čas:

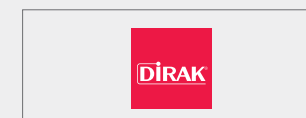
ponedeljek - petek 8:00 - 16:00

+386) 041 694 339

info@metalika-kacin.com



Distribucijska mreža Metalike KACIN
v Sloveniji, na Hrvaškem in v Srbiji.



DIRAK

Ključavnice, tečajji, tesnila, ročajji in druga
tehnologija za zahtevne aplikacije



TORWEGGE

Tekalna kolesa in elementi
za transportno opremo



PINET

Okovje in pribor za strojegradnjo in
kovinsko industrijo



emico

Plastični čepi in elementi



BURG

Inteligentni zapirni sistemi



WEH

Adapterji za polnjenje in preizkušanje tekočih in
plinskih medijev



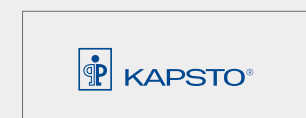
ELESA + GANTER

Standardni vpenjalni in zatezni elementi



MARTIN

Visoko kakovostni podporni in nivelirni elementi



KAPSTO

Plastične zaščitne kape in čepi



OJOP

Zatezna zapirala, klipsne in akumulatorske kleme



SPEEDY BLOCK

Preklopna vpenjala in ročne sponje



KIPP

Vpenjalna tehnika in standardni strojni elementi