



METALIKA
COMPONENTS FOR INDUSTRY **KACIN**

CONCEALED RUNNERS





Concealed runners																					
	Installation	Application	Load bearing capacity up to kg	Nominal length mm										Page							
				250-260	270	300-327	350-360	380	400-420	450-460	480	500-520	550-560		580	600-610	650-660	700-710	750		
	Pins	Single extension	25	✓		✓	✓		✓	✓		✓	✓							▶ MB 9.218	
		Full extension	30	✓		✓	✓		✓	✓		✓	✓		✓	✓					▶ MB 9.219
	With Snap-in coupling	Single extension	30		✓	✓	✓		✓	✓		✓	✓							▶ MB 9.220	
		Full extension	30	✓	✓	✓	✓	✓	✓	✓	✓	✓	✓	✓	✓						▶ MB 9.221
			40	✓	✓	✓	✓	✓	✓	✓	✓	✓	✓	✓	✓						▶ MB 9.224
		50	40	✓	✓	✓	✓	✓	✓	✓	✓	✓	✓	✓	✓						▶ MB 9.230
			50							✓		✓	✓	✓	✓	✓	✓	✓	✓	✓	▶ MB 9.221
		60								✓		✓	✓	✓	✓	✓	✓	✓	✓	▶ MB 9.230	
		70									✓		✓	✓	✓	✓				▶ MB 9.224	
On base panel	Full extension	40				✓		✓	✓		✓								▶ MB 9.227		

DGH-M 2017, HDE-en, 10/16; Dimensional data not binding. We reserve the right to alter specifications without notice.

Single extension

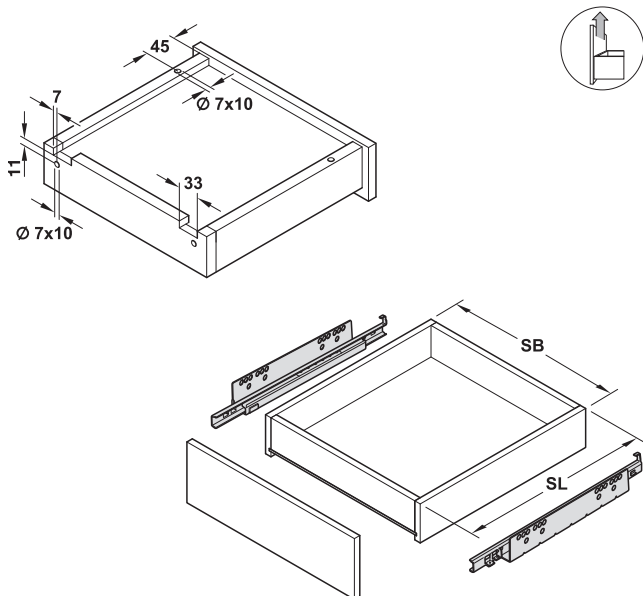
Load bearing capacity up to 25 kg,
installation with pins, with self closing mechanism,
soft and self closing mechanism or Push



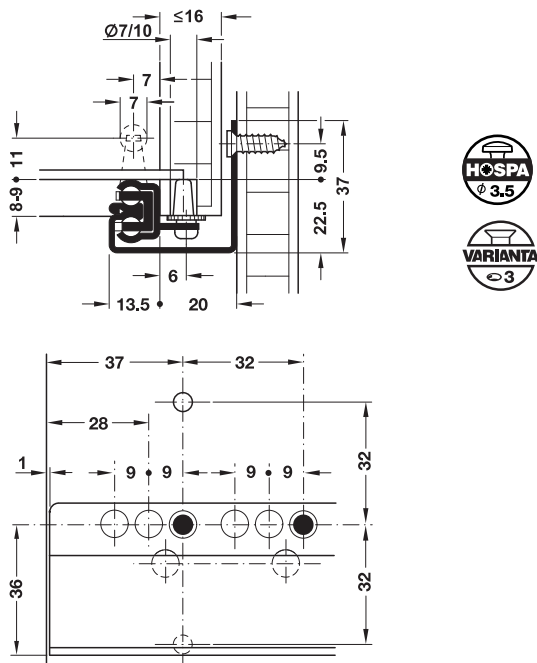
- > Adjustment facility: Max. height adjustment +3 mm
- > Material: Steel
- > Finish: Galvanized
- > Dim.: Max. drawer width SB = internal cabinet width – 40 mm + 2 x drawer side thickness
- > Soft closing with air dampers

Note

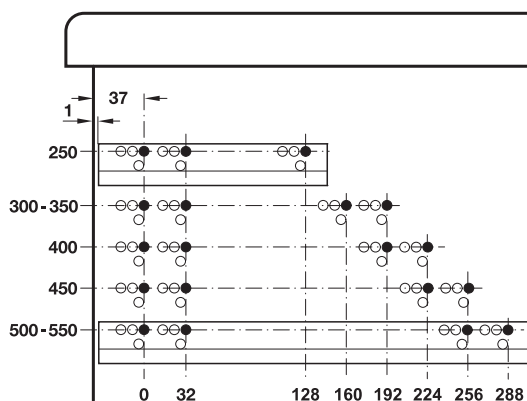
The single extension runners can be replaced by full extension runners with load bearing capacity of up to 30 kg and with pin installation.



Installation



Drilling pattern



Installation length L mm	Drawer length SL mm	With self closing mechanism	With soft and self closing mechanism	With Push, without self closing and soft closing mechanisms
252	250	421.14.925	421.14.725	421.14.825
302	300	421.14.930	421.14.730	421.14.830
327	325	421.14.932	421.14.732	421.14.832
352	350	421.14.935	421.14.735	421.14.835
402	400	421.14.940	421.14.740	421.14.840
452	450	421.14.945	421.14.745	421.14.845
502	500	421.14.950	421.14.750	421.14.850
552	550	421.14.955	421.14.755	421.14.855

Packing: 1 or 10 pairs

Full extension

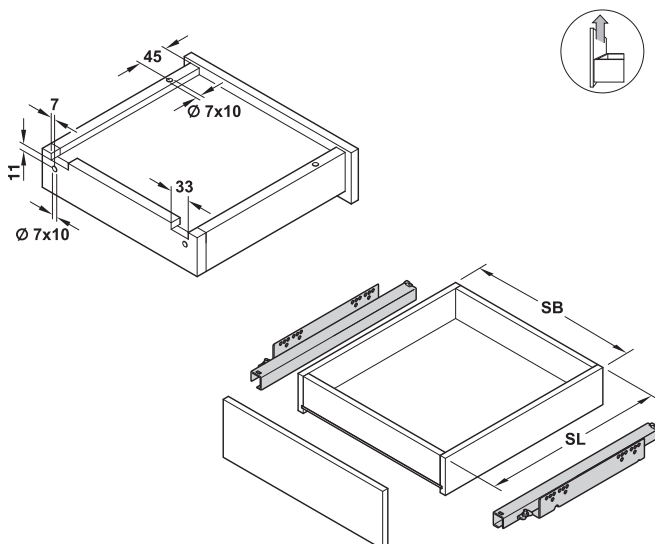
Load bearing capacity up to 30 kg,
 installaton with pins, with self closing mechanism,
 soft and self closing mechanism or Push



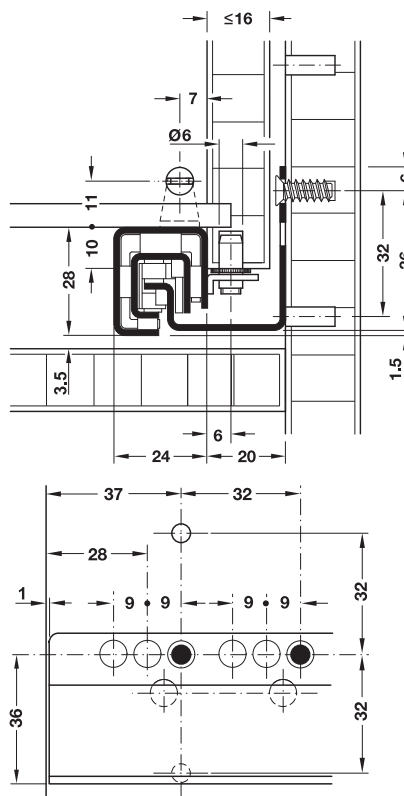
- > Material: Steel
- > Finish: Pre-galvanized
- > Dim.: Max. drawer width SB = internal cabinet width – 40 mm + 2 x drawer side thickness, front gap 0 mm (3 mm with Push)
- > Soft closing with air dampers

Note

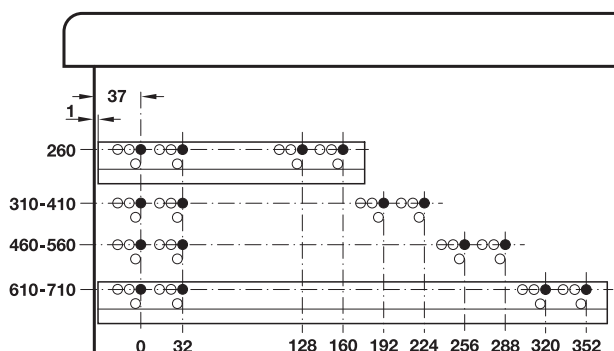
The full extension runners can be replaced by single extension runners with load bearing capacity of up to 30 kg and with pin installation.



Installation



Drilling pattern



Installation length L mm	Drawer length SL mm	With self closing mechanism	With soft and self closing mechanism	With Push, without self closing and soft closing mechanisms
260	250	423.57.926	423.57.526	423.57.426
310	300	423.57.931	423.57.531	423.57.431
360	350	423.57.936	423.57.536	423.57.436
410	400	423.57.941	423.57.541	423.57.441
460	450	423.57.946	423.57.546	423.57.446
510	500	423.57.951	423.57.551	423.57.451
560	550	423.57.956	423.57.556	423.57.456
610	600	423.57.961	423.57.561	423.57.461
660	650	423.57.966	423.57.566	423.57.466
710	700	423.57.971	423.57.571	423.57.471

Packing: 1 or 5 pairs

Information

► MB 9.215

DGH-M 2017, HDE-en, 10/16; Dimensional data not binding. We reserve the right to alter specifications without notice.



9

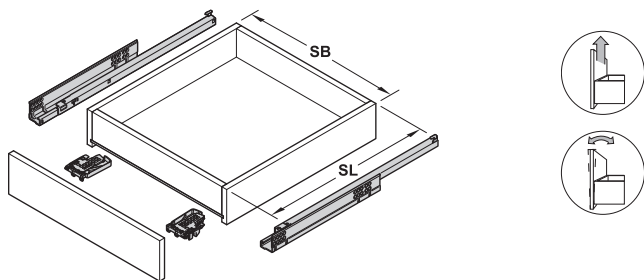
Concealed Runners

Blum Tandem 550 H, single extension

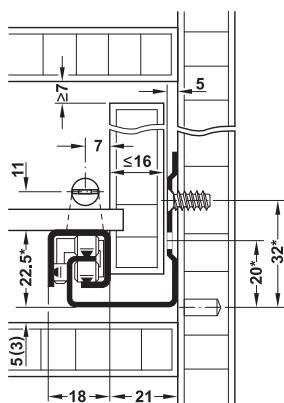
Load bearing capacity up to 30 kg,
with self closing mechanism,
with or without Blumotion soft and self closing
mechanism



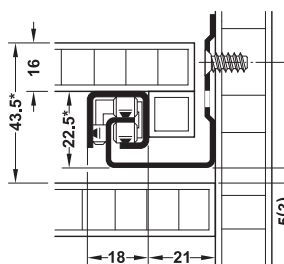
- > Adjustment facility: Max. tilting angle adjustment +5.3 mm, max. height adjustment +3 mm at snap-in coupling
- > Material: Steel
- > Finish: Pre-galvanized
- > Dim.: Max. drawer width SB = internal cabinet width – 42 mm + 2 x drawer side thickness, tolerance specification: Width +0 mm, –1.5 mm, depth ±2 mm, front gap 0 mm



Installation



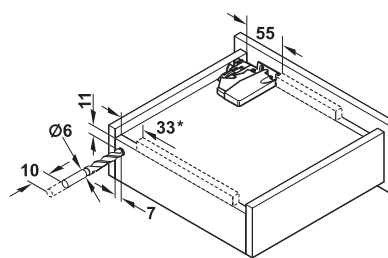
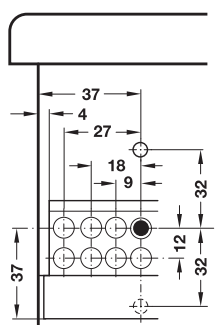
*+1 mm with Tip-On,
+2 mm with Blumotion,
+3 mm with side stabilisation set
Drawers and pull outs



Shelves

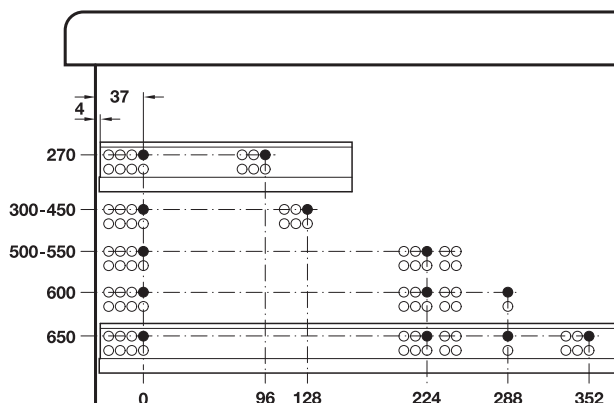
Values in brackets apply to Blumotion soft and self closing mechanism

Drawers and pull outs



*Tip-On 85 mm
Runners and snap-in coupling

Drilling pattern



Note

Min. installation length with front drawers = nominal length + 3 mm,
with side stabilisation set: Nominal length + 15 mm

Supplied with

- 1 Pair of drawer runners
- 1 Pair of snap-in couplings

Nom. length mm	Drawer length SL mm	With Blumatic self closing mechanism, suitable for Tip-On	With Blumotion soft and self closing mechanism, not suitable for Tip-On
270	260	423.53.275	423.53.727
300	290	423.53.300	423.53.730
350	340	423.53.355	423.53.735
400	390	423.53.408	423.53.740
450	440	423.53.453	423.53.745
500	490	423.53.506	423.53.750
550	540	423.53.551	423.53.755
600	590	423.53.604	–
650	640	423.53.659	–

Packing: 1 pair

Tandem side stabilisation set	► MB 9.223
Fixing component for shelves	► MB 9.223
Tip-On extension mechanism	► MB 9.222
Processing aids	► MB 9.229
Information	► MB 9.215

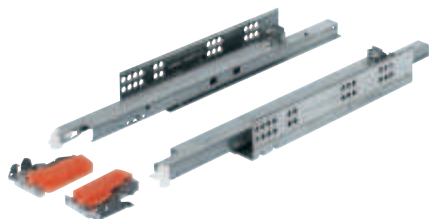


9

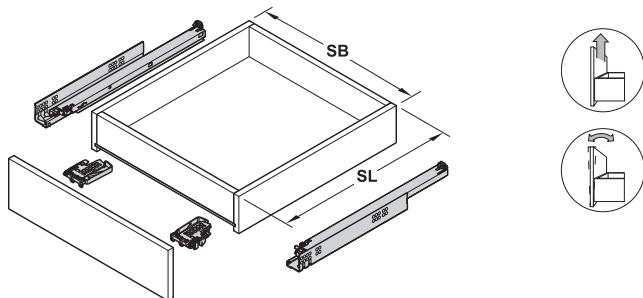
Concealed Runners

Blum Tandem 560 H and 566 H, full extension

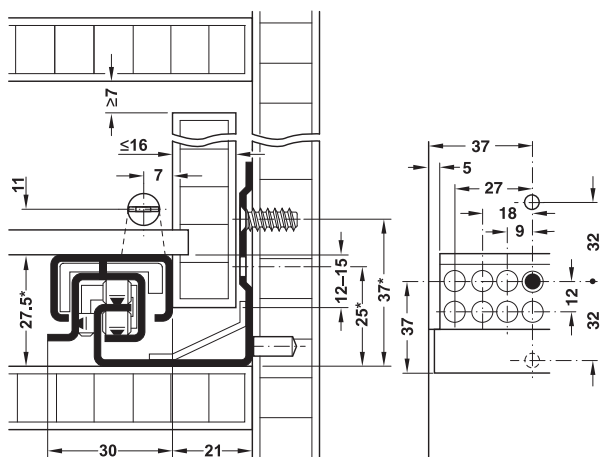
Load bearing capacity up to 50 kg, with self closing mechanism, with or without Blumotion soft and self closing mechanism



- > Adjustment facility: Max. tilting angle adjustment +5.3 mm, max. height adjustment +3 mm at snap-in coupling
- > Material: Steel
- > Finish: Pre-galvanized
- > Dim.: Max. drawer width SB = internal cabinet width – 42 mm + 2 x drawer side thickness, tolerance specification: Width +0 mm, –1.5 mm, depth ±2 mm, front gap 0 mm

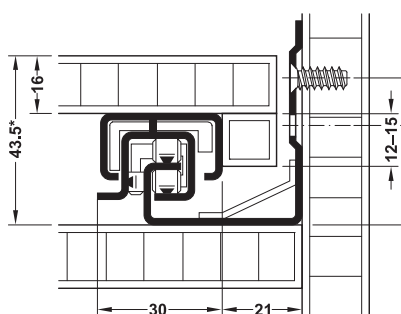


Installation

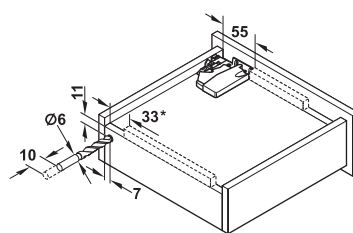


Drawers and pull outs

*+1 mm with Tip-On
+3 mm with side stabilisation set



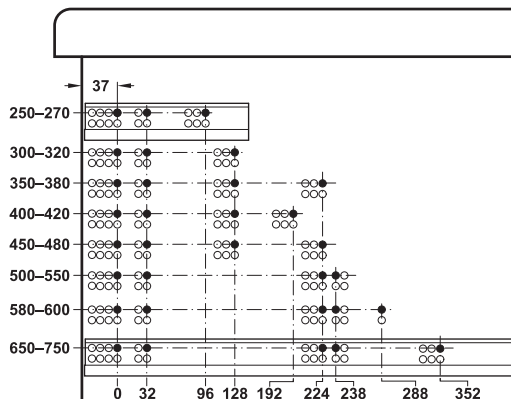
Shelves



*Tip-On 85 mm

Runners and snap-in coupling

Drilling pattern



Tandem 560 H and 566 H, load bearing capacity 30 or 50 kg

Note

Min. installation length with front drawers = nominal length + 3 mm, with side stabilisation set + 15 mm

Supplied with

- 1 Pair of drawer runners
- 1 Pair of snap-in couplings

Nom. length mm	Drawer length SL mm	With Blumatic self closing mechanism, suitable for Tip-On	With Blumotion soft and self closing mechanism, not suitable for Tip-On
----------------	---------------------	---	---

Tandem 560 H, load bearing capacity 30 kg

250	240	423.54.250	423.54.725
270	260	423.54.272	423.54.727
300	290	423.54.307	423.54.730
320	310	423.54.320	423.54.732
350	340	423.54.352	423.54.735
380	370	423.54.380	423.54.738
400	390	423.54.405	423.54.740
420	410	423.54.420	423.54.742
450	440	423.54.450	423.54.745
480	470	423.54.490	423.54.748
500	490	423.54.503	423.54.750
520	510	423.54.520	423.54.752
550	540	423.54.558	423.54.755
600	590	423.54.570	423.54.761

Tandem 566 H, load bearing capacity 50 kg

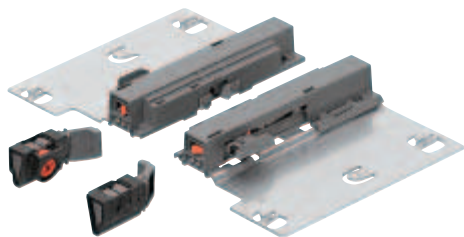
450	440	423.59.945	423.59.745
500	490	423.59.950	423.59.750
520	510	423.59.953	423.59.752
550	540	423.59.955	423.59.755
580	570	423.59.958	423.59.758
600	590	423.59.960	423.59.760
650	640	423.59.965	423.59.765
700	690	423.59.970	423.59.770
750	740	423.59.975	423.59.775

Packing: 1 pair

Tandem side stabilisation set	► MB 9.223
Fixing component for shelves	► MB 9.223
Tip-On extension mechanism	► MB 9.222

Tandem Tip-On Extension mechanism

For Blum Tandem drawer runners
with Blumatic self closing mechanism

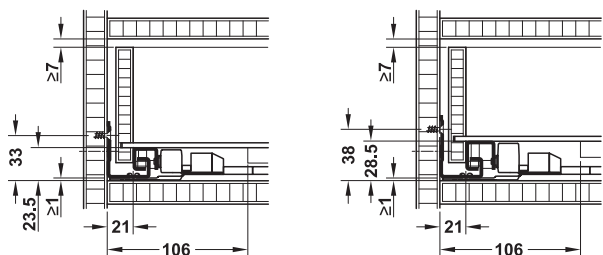


- > Version: Locking and extension mechanism on both sides
- > Material: Support plate: Steel, extension mechanism: Plastic
- > Finish: Support plate: Galvanized
- > Installation: For clipping onto drawer runners, without tools
- > Dim.: Front gap 3.5 mm

Note

We recommend the use for front panel widths >600 mm.
We recommend using the additional synchronising set for Tip-On from front panel widths of 600 mm and above.

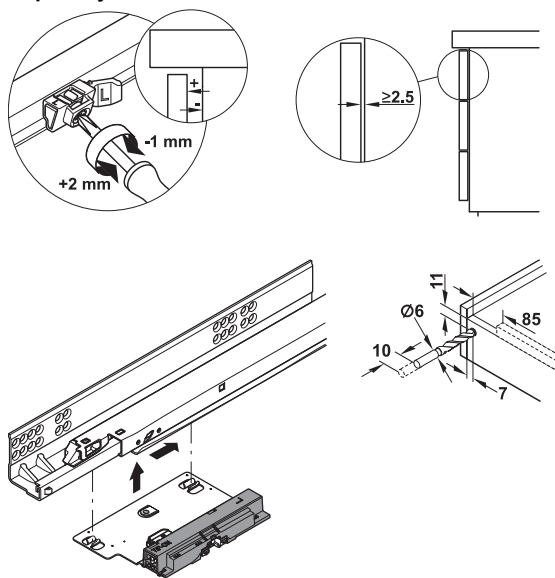
Installation



550 H, single extension

560 H and 566 H, full extension

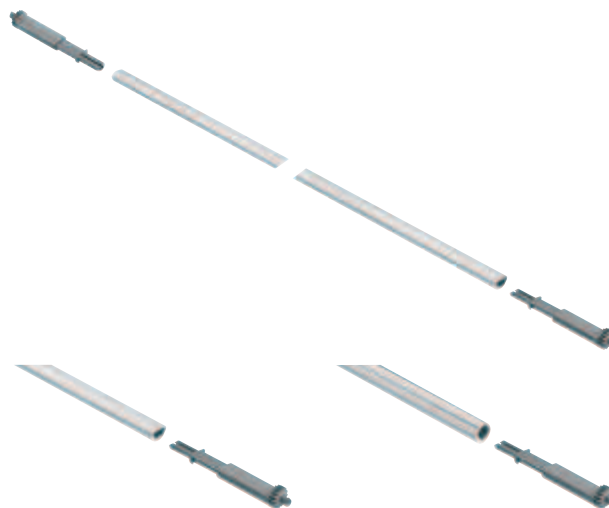
Depth adjustment



Suitable for	Colour	Cat. No.
550 H, single extension, up to 30 kg	Housing: Grey, follower: Grey/orange	423.53.061
560 H, full extension, up to 30 kg	Housing: Grey, follower: Black/orange	423.54.061
566 H, full extension, up to 50 kg	Housing: Black, follower: Black/orange	423.59.061

Packing: 1 set

→ Additional synchronising set for Tip-On



For cabinet widths up to 1,200 mm

For cabinet widths up to 1,400 mm

- > Material: Bar: Aluminium cog: Plastic
- > Dim.: Bar suitable for cabinet widths up to 1,200/1,400 mm, cut = internal width – 277 mm

	Cat. No.
For cabinet widths up to 1200 mm	423.53.065
For cabinet widths up to 1400 mm	423.53.068

Packing: 1 set



9

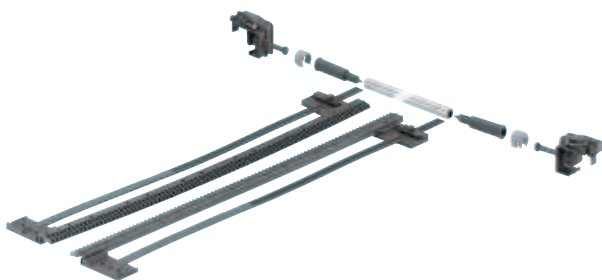
Concealed Runners

Blum Tandem 550 H, single extension ► MB 9.220

Blum Tandem 560 H and 566 H, full extension ► MB 9.221

Tandem Side stabilisation set

For single extension, Tandem 550 H,
for full extension, Blum Tandem 560 H and 566 H



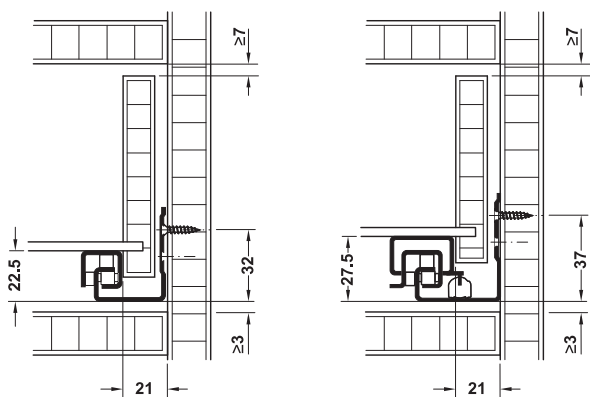
- For improving the side stability
- > of wide drawers with short nominal length
 - > during opening (e.g. with off-centre mounted handles)
 - > in open position
 - > for cabinet widths up to 1,400 mm
- Additional drawer and cabinet processing is not required.

> Installation: On runners without tools
(cutting to size requires tools)

Note

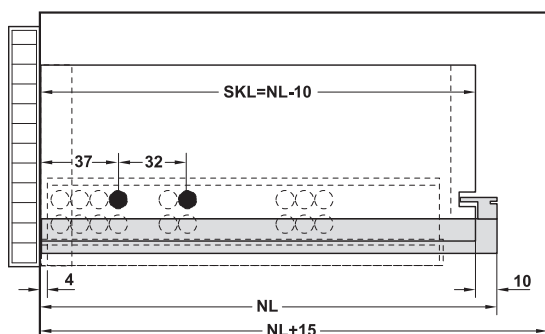
Not suitable for use with Tandem Tip-On extension mechanism.
Not yet suitable for shelves and for use with Blum Servo-Drive automatic opening mechanism.

Installation



Single extension
Space requirement below 3 mm

Full extension



Single and full extension
Space requirement at rear: Nominal length + 15 mm

Cutting dimensions:

Stabilising shaft single extension length =
internal cabinet width – 222 mm
Stabilising shaft full extension length =
internal cabinet width – 254 mm
Rack length = nominal length + 12 mm

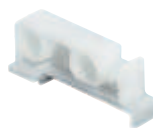
Supplied with

- 2 Racks left/right, for cutting to size
 - 2 Bearing blocks left/right
 - 2 Couplings
 - 2 Hook-off protection devices
 - 1 Stabilising shaft 1144 mm, for cutting to size
- Installation instructions

Area of application	Nominal length of runners mm	Cat. No.
For Blum Tandem 550 H single extension	250–410	423.53.014
	411–600	423.53.017
For Blum Tandem 560 H and 566 H full extension	250–410	423.54.014
	411–650	423.54.016
	601–750	423.54.017

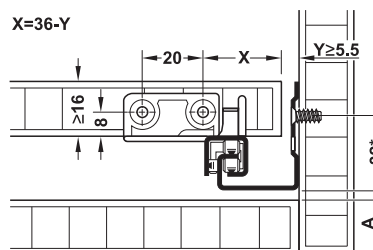
Packing: 1 set

Blum T 51.7000.01 Fixing component



- > Area of application: For attaching drawer runners to shelves
- > Material: Plastic
- > Colour: Natural colour

Blum Tandem installation



- *+1 mm for single extension with Tip-On
- +2 mm for single extension with Blumotion
- +3 mm for single extension with side stabilisation set
- +5 mm for full extension with Blumotion
- +6 mm for full extension with Tip-On
- +8 mm for full extension with side stabilisation set
- A= 5 mm for single extension with Blumatic
- 3 mm for single extension with Blumotion
- 0 mm for full extension with Blumatic /Blumotion

Model	Cat. No.
T 51.7000.01	423.53.078

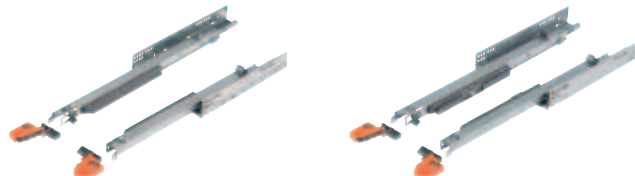
Packing: 1 or 250 pieces

Blum Tandem 560 H and 566 H, full extension	► MB 9.221
Blum Tandem 550 H, single extension	► MB 9.220

Blum Movento 760 H and 766 H full extension

Load bearing capacity up to 60 kg,
 with Blumotion soft closing mechanism
 and/or Tip-On automatic opening mechanism

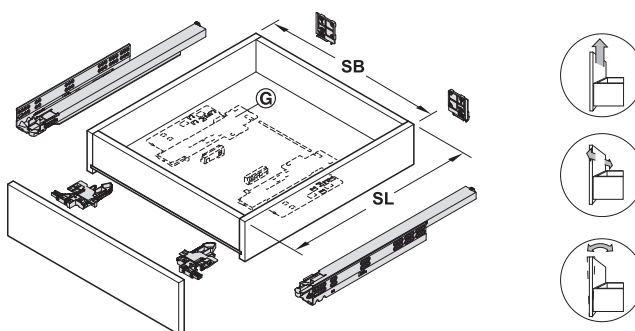
- > High-comfort movement: Easy opening, smooth running characteristics and gentle closing
- > Easy and variable adjustment
- > Stable and accurate running characteristics due to minimum lowering



Blumotion S drawer runners with Blumotion soft closing mechanism

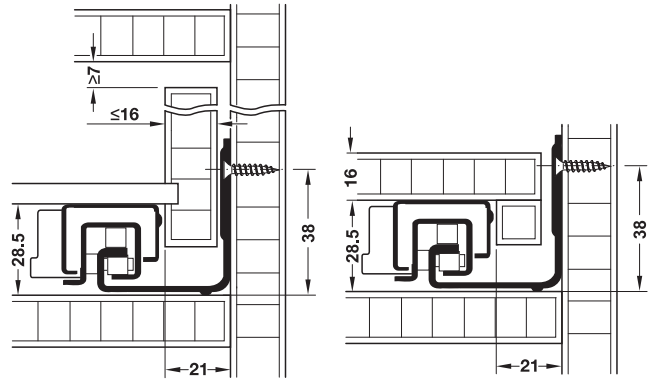
Tip-On drawer runners with Tip-On automatic opening mechanism

- > Type of pull out: **Blumotion S drawer runners:** Full extension with integrated Blumotion soft closing mechanism;
Tip-On drawer runners: Full extension with integrated Tip-On automatic opening mechanism
- > Functionality: **With Blumotion soft closing mechanism**
 The Blumotion soft closing mechanism integrated in the cabinet rail provides gentle and silent closing of the drawer.
With Blumotion soft closing mechanism and Tip-On automatic opening mechanism
 In addition to the integrated Blumotion soft closing mechanism, the optional Tip-On Blumotion unit and follower (G) allow opening of the drawer by simply tapping the front panel.
With Tip-On automatic opening mechanism
 Gently tapping the handle-free front panel suffices to open the drawer when using this cabinet rail.
- > Adjustment facility: Max. height adjustment +3 mm at drawer rail, max. side adjustment ± 1.5 mm at snap-in coupling
- > Material: Steel
- > Finish: Pre-galvanized
- > Dimensions: Max. drawer width SB = internal cabinet width - 42 mm + 2 x drawer side thickness, tolerance specification: Width $+0/-1.5$ mm, depth ± 2 mm, front gap: 0 mm with Blumotion S, 2.5 mm with Blumotion S with Tip-On Blumotion, 3.5 mm with Tip-On



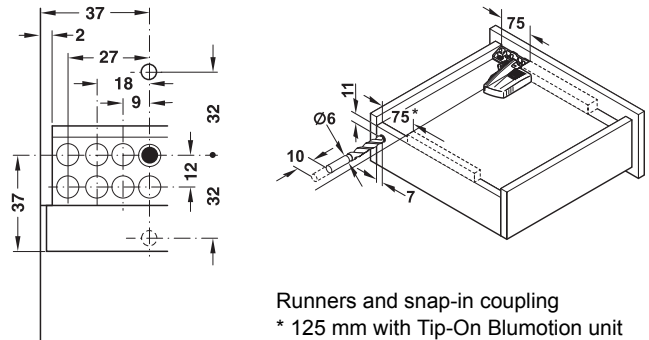
(G) Tip-On Blumotion unit and follower

Installation



Drawers and pulls outs for door front fixing

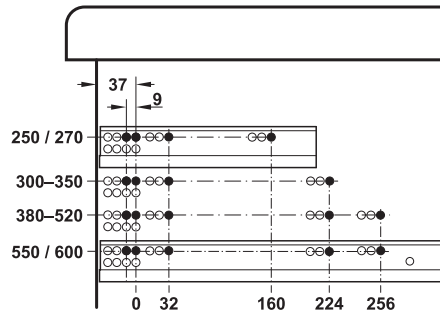
Shelves



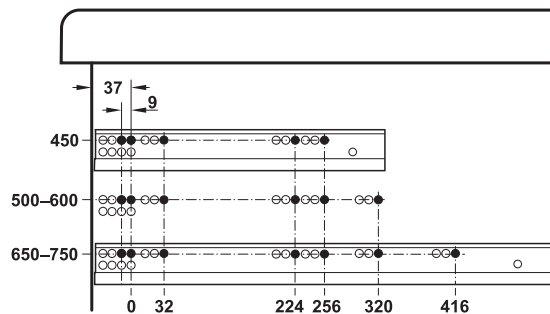
Runners and snap-in coupling * 125 mm with Tip-On Blumotion unit and follower



Drilling pattern



Movento 760 H, load bearing capacity 40 kg



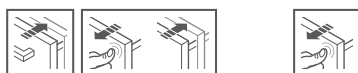
Movento 766 H, load bearing capacity 60 kg

Note

Min. internal installation depth = nominal length + 3 mm
 When using the side stabilisation set:
 Min. internal installation depth = nominal length + 15 mm

Supplied with

- 1 pair of drawer runners
- 1 pair of snap-in couplings



Nom. length mm	Drawer length SL mm	Blumotion S drawer runners	Tip-On drawer runners
Movento 760 H, load bearing capacity 40 kg			
250	240	433.33.110	433.24.130
270	260	433.33.111	433.24.131
300	290	433.33.112	433.24.132
320	310	433.33.113	433.24.133
350	340	433.33.114	433.24.134
380	370	433.33.115	433.24.135
400	390	433.33.116	433.24.136
420	410	433.33.117	433.24.137
450	440	433.33.118	433.24.138
480	470	433.33.119	433.24.139
500	490	433.33.120	433.24.140
520	510	433.33.121	433.24.141
550	540	433.33.122	433.24.142
600	590	433.33.124	433.24.144
Movento 766 H, load bearing capacity 60 kg			
450	440	433.33.318	433.24.338
500	490	433.33.320	433.24.340
520	510	433.33.321	433.24.341
550	540	433.33.322	433.24.342
580	570	433.33.323	433.24.343
600	590	433.33.324	433.24.344
650	640	433.33.325	433.24.345
700	690	433.33.326	433.24.346
750	740	433.33.327	433.24.347

Packing: 1 pair

Order reference

In addition to the integrated Blumotion soft closing mechanism, the optional Tip-On Blumotion unit and follower © allow opening of the drawer by simply tapping the front panel with soft closing action at the same time.

When using the Tip-On Blumotion unit and follower, it is generally recommended to use the Tip-On Blumotion synchronisation rod.

If the Movento drawer runners are used in combination with the Servo-Drive automatic opening mechanism, the Movento depth adjuster must be used for inset drawer front panels.

When installing Tip-On drawer runners, we recommend using the additional set for synchronising Tip-On cabinet runners from a cabinet width of 600 mm and above.

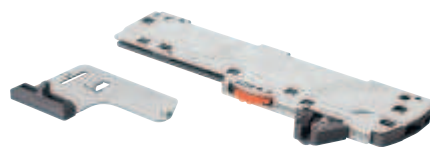
We also recommend using the side stabilisation set for Blumotion S and Tip-On drawer runners from a cabinet width of 900 mm and above.

Please use the Tip-On Blumotion front gap jig for adjusting the front panel gap.

The optional Tip-On Blumotion unit, depth adjustment, synchronisation rod, additional set, side stabilisation set and front gap jig are not supplied. Please order separately.

Information	► MB 9.215
Fixing component for shelves	► MB 9.228
Tip-On Blumotion synchronisation rod	► MB 9.227
Movento depth adjuster	► MB 9.227
Additional synchronising set	► MB 9.227
Tip-On Blumotion front gap jig	► MB 9.227
Blum Movento side stabilisation set	► MB 9.228
Processing aids/accessories	► MB 9.229

→ Tip-On Blumotion Unit and follower ©



Note

Blumotion S drawer runners must be used for the Tip-On Blumotion unit.

- > Suitable for: Blum Legrabox pure/free drawer side runner system, Blum Movento drawer runners
- > Material: Plastic
- > Colour: Grey

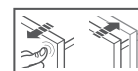
Technical data

Model	For nominal length (mm)		Load bearing capacity* (kg)	
	Legrabox	Movento	Legrabox	Movento
T60L7040	270–300	270–320	Up to 10	Up to 10
T60L7140			10 to 20	10 to 20
T60L7340	350–650	350–750	Up to 20	Up to 20
T60L7540			15 to 40	15 to 40
T60L7570			35 to 70	35 to 60

* Recommended load bearing capacity (total weight of pull out including load) for optimum opening and closing function

Supplied with

- 2 Tip-On Blumotion units (left/right)
- 2 Tip-On Blumotion followers (left/right)
- 2 Tip-On Blumotion synchronising adapters



Model	Cat. No.
T60L7040	550.61.040
T60L7140	550.61.041
T60L7340	550.61.042
T60L7540	550.61.043
T60L7570	550.61.044

Packing: 1 set

Order reference

When using the Tip-On Blumotion unit and follower, it is generally recommended to use the Tip-On Blumotion synchronisation rod.



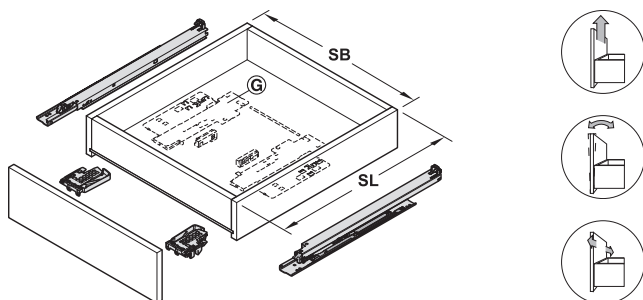
Blum Movento 760 H, full extension

Load carrying capacity up to 40 kg, surface mounted, with Blumotion soft closing mechanism



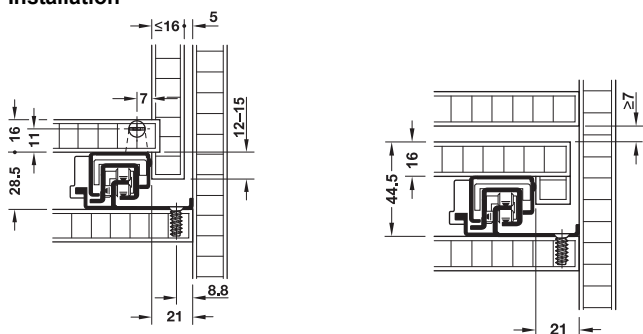
Blumotion S drawer runners with Blumotion soft closing mechanism

- > Type of pull out: **Blumotion S drawer runners:** Full extension with integrated Blumotion soft closing mechanism
- > Functionality: **With Blumotion soft closing mechanism**
The Blumotion soft closing mechanism integrated in the drawer runners provides gentle and silent closing of the drawer.
With Blumotion soft closing mechanism and Tip-On automatic opening mechanism
In addition to the integrated Blumotion soft closing mechanism, the optional Tip-On Blumotion unit and follower **Ⓒ** allow opening of the drawer by simply tapping the front panel.
- > Adjustment facility: Max. height adjustment +3 mm at drawer rail, max. side adjustment ± 1.5 mm at snap-in coupling, max. tilting angle adjustment +5 mm
- > Material: Steel
- > Finish: Pre-galvanized
- > Dim.: Max. drawer width SB = internal cabinet width - 42 mm + 2 x drawer side thickness, tolerance specification: Width +0/-1.5 mm, depth ± 2 mm, front gap: 0 mm with Blumotion S, 2.5 mm with Blumotion S with Tip-On Blumotion

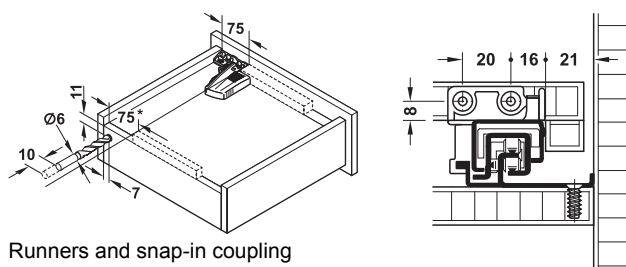


Ⓒ Tip-On Blumotion unit and follower

Installation

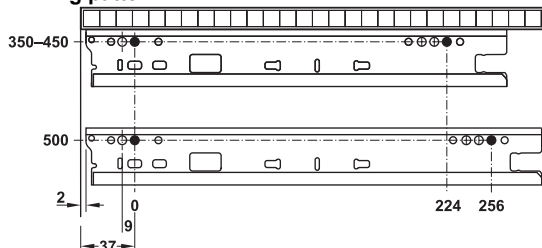


Drawers and pull outs for door front fixing Shelves



Runners and snap-in coupling
* 125 mm with Tip-On Blumotion unit and follower

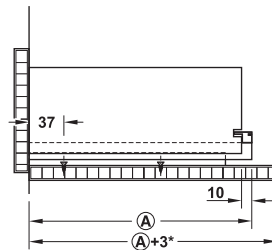
Drilling pattern



Note

Min. installation length with butting inset drawers with 19 mm front panel = nominal length + 21 mm

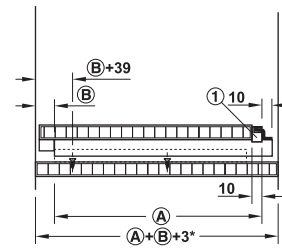
Installation dimensions for drawer



* Add +12 mm with side stabilisation set

Drawer length SL = **A** - 10 mm

Installation dimensions for internal drawer



* Add +12 mm with side stabilisation set

Internal drawer length SL = **A** - 20 mm + **B**
1 fixing component

Supplied with

- 1 pair of drawer runners
- 1 pair of snap-in couplings

Nom. length mm	Drawer length SL mm	Cat. No.
350	340	433.33.514
400	390	433.33.516
450	440	433.33.518
500	490	433.33.520

Packing: 1 set

Order reference

In addition to the integrated Blumotion soft closing mechanism, the optional Tip-On Blumotion unit and follower **Ⓒ** allow opening of the drawer by simply tapping the front panel with soft closing action at the same time.

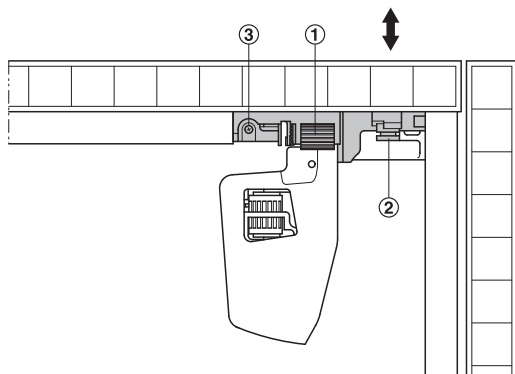
When using the Tip-On Blumotion unit and follower, it is generally recommended to use the Tip-On Blumotion synchronisation rod. The optional Tip-On Blumotion unit and synchronisation rod are not supplied. Please order separately.

Tip-On Blumotion unit and follower Ⓒ	► MB 9.225
Movento depth adjuster	► MB 9.227
Movento side stabilisation set	► MB 9.228
Fixing component for shelves	► MB 9.228
Tip-On Blumotion synchronisation rod	► MB 9.229
Processing aids	► MB 9.229

Movento Depth adjuster



Installation



- ① Adjusting wheel
- ② Stop buffer for Servo-Drive automatic opening mechanism
- ③ Safety lock screw

- > Area of application: For butting inset drawer front panels and internal pull outs, for front panel depth adjustment without tools
- > Version: With stop buffer for Servo-Drive automatic opening mechanism
- > Material: Plastic
- > Colour: Dust grey
- > Adjustment facility: ± 2 mm
- > Installation: For positioning onto snap-in coupling, securing with screw

	Cat. No.
Depth adjuster	433.24.970

Packing: 1 or 40 pairs

Order reference

If the Movento drawer runners are used in combination with the Servo-Drive automatic opening mechanism, the Movento depth adjuster must be used for inset drawer front panels.

Additional set for synchronising Tip-On cabinet rails



- > Suitable for: Blum Legrabox pure/free drawer side runner system, Blum Movento drawer runners
- > Material: Synchronising set: Plastic, stabilising shaft: Aluminium
- > Colour: Synchronising set: Dust grey, RAL 7037
- > Dimensions: Rod suitable for cabinet width up to 1,400 mm, cut for Legrabox = internal width – 229 mm, cut for Movento = internal width – 249 mm

Supplied with

- 1 Tip-On synchronising set
- 1 Tip-On stabilising shaft

	Cat. No.
For cabinet width up to 1400 mm	433.24.994

Packing: 1 set

Tip-On Blumotion Synchronisation rod

→ For standard drawers



- > Suitable for: Blum Legrabox pure/free and Blum Tandembox antaro drawer side runner system, Blum Movento drawer runners
- > Material: Plastic
- > Colour: Black
- > Dimensions: Rod suitable for cabinet width up to 1,400 mm, cut for Tandembox = internal width – 240 mm, cut for Legrabox = internal width – 247 mm, cut for Movento = internal width – 267 mm

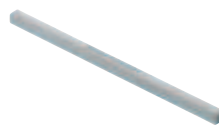
Supplied with

- 1 Tip-On Blumotion stabilising shaft

	Cat. No.
For cabinet width from 600 mm up to 1400 mm	550.60.119

Packing: 1 or 5 pieces

→ For narrow drawers

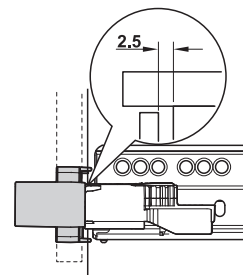
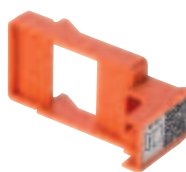


- > Suitable for: Blum Legrabox pure/free and Blum Tandembox antaro drawer side runner system, Blum Movento drawer runners
- > Material: Plastic
- > Colour: Light grey, RAL 7035
- > Dimensions: Tandembox: Cut = internal width – 214 mm, internal width inside cabinet 238–286 mm, Legrabox: Cut = internal width – 221 mm, internal width inside cabinet 245–293 mm, Movento: Cut = internal width – 241 mm, internal width inside cabinet 265–313 mm

	Cat. No.
Tip-On Blumotion synchronisation rod	550.60.111

Packing: 1 piece

Tip-On Blumotion Front gap jig



- > Area of application: For easy depth adjustment of drawer runners with Tip-On Blumotion
- > Suitable for: Blum Legrabox pure/free drawer side runner system, Blum Movento drawer runners
- > Material: Plastic
- > Colour: Dust grey, RAL 7037

	Cat. No.
Tip-On Blumotion front gap jig	550.60.015

Packing: 1 piece

Movento Side stabilisation set

For Blum Movento 760 H and 766 H, full extension

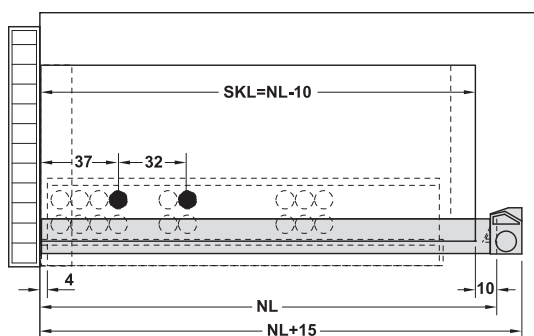
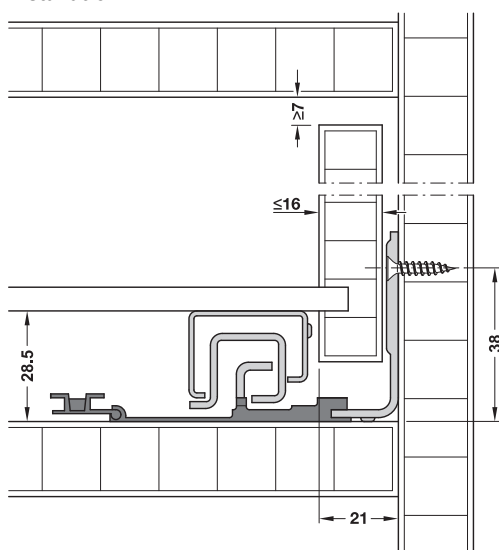


For improving the side stability

- > with wide pull outs with short nominal length
 - > when opening (e.g. with off-centre mounted handles)
 - > in open position
 - > with cabinet widths up to 1,400 mm
- Additional drawer and cabinet processing is not required.
Additional space below is not required.

- > Area of application: For Blum Movento 760 H and 766 H full extension runners with Blumotion, Tip-On or Tip-On Blumotion
- > Installation: Without tools on runners, racks and stabilising shaft must be cut to required size

Installation



Space requirement rear, nominal length + 15 mm

Cut:

Stabilising shaft length = internal cabinet width – 315 mm
Rack length = nominal length + 10 mm

Supplied with

- 2 racks left/right
- 2 bearing blocks left/right
- 2 couplings
- 2 hook-off protection devices
- 1 stabilising shaft 1,071 mm
- Installation instructions

Nominal length of runners mm	Cat. No.
250–400	433.24.950
420–600	433.24.951
650–750	433.24.952

Packing: 1 set

Order reference

Please also order stabilising shaft for cabinet widths of $\geq 1,400$ mm.

→ Stabilising shaft

For cabinet widths $\geq 1,400$ mm



- > Material: Aluminium
- > Version: For cutting to required length
- > Length: 2,000 mm

Model	Cat. No.
ZST2000W	433.24.965

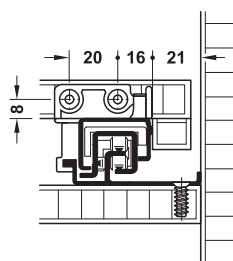
Packing: 1 or 50 pieces

Blum T 51.7000.01 Fixing component



- > Area of application: For attaching drawer runners to shelves
- > Material: Plastic
- > Colour: Natural colour

Blum Movento installation



Model	Cat. No.
T 51.7000.01	423.53.078

Packing: 1 or 250 pieces

Blum Movento 760 H / 766 H, full extension

► MB 9.224



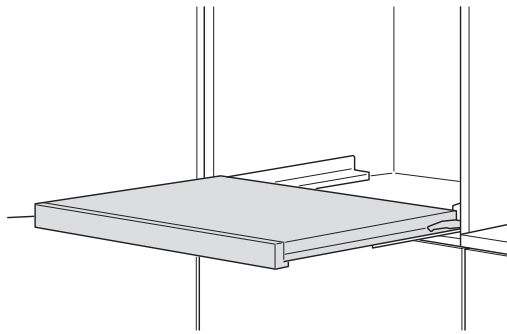
9

Concealed Runners

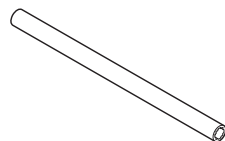
DGH-M 2017, HDE-en_10/16; Dimensional data not binding. We reserve the right to alter specifications without notice.

Blum Shelf locking mechanism

For Movento and Tandem runners

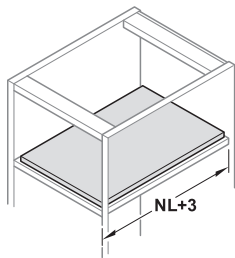


Shelf locking mechanism



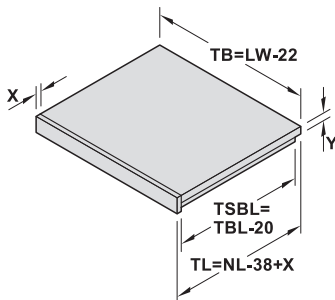
Synchronisation shaft

Space requirement

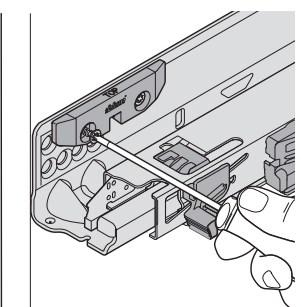
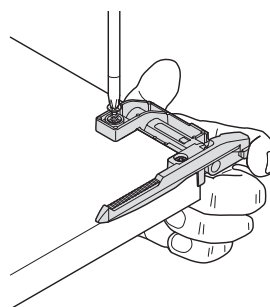
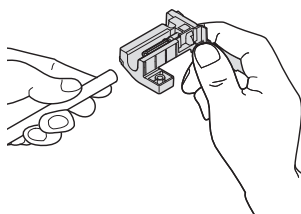
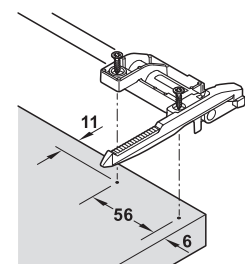
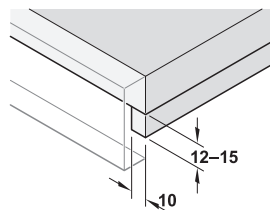


Synchronisation shaft cut: LW -87 +/- 1 mm

Shelf preparation



TB = shelf width
NL = nominal length
LW = internal cabinet width
TL = shelf length
TBL = shelf base length
TSBL = shelf side panel length
X = front thickness
Y = shelf thickness



- > For use in combination with Movento and Tandem full extensions in all residential areas (not suitable for use with Tandem single extensions)
- > Can be combined with Blumotion, Tip-On Blumotion and Tip-On
- > Secure hold provided by locking mechanism on both sides
- > Synchro control allows the shelf to be released with one hand
- > Easy installation – fittings serve as jig
- > The runners are mounted on the usual screw-on positions

- > Material: Plastic
- > Finish/colour: Matt, Orion grey

Note

Locking unit must be fixed with chipboard screws.

Supplied with

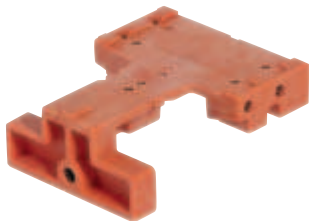
2 locking units
2 hold-out elements
Installation instructions

	Model	Packing pieces	Cat. No.
Shelf locking mechanism	295H5700	1	433.24.973
Synchronisation shaft	ZST.1160W	1 or 40	433.24.969

Order reference

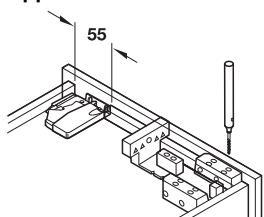
Fixing material not supplied. Please order chipboard screws \varnothing 3.5 x 15 mm or system screws separately.

Blum T 65.1000.02 Drawer drilling jig

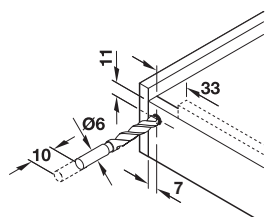


- > Area of application: For Blum concealed runners, for drilling hook positions for the drawer rail, for pilot drilling of the fixing position of the snap-in coupling
- > Version: With hardened inserts
- > Material: Plastic
- > Colour: Orange

Application



Fixing position of the snap-in coupling



Hook position of the drawer rail

Supplied with

Instructions for use

Model	Cat. No.
T 65.1000.02	423.53.006

Packing: 1 piece

Blum T 65.9000 Set of tools For drawer drilling jig



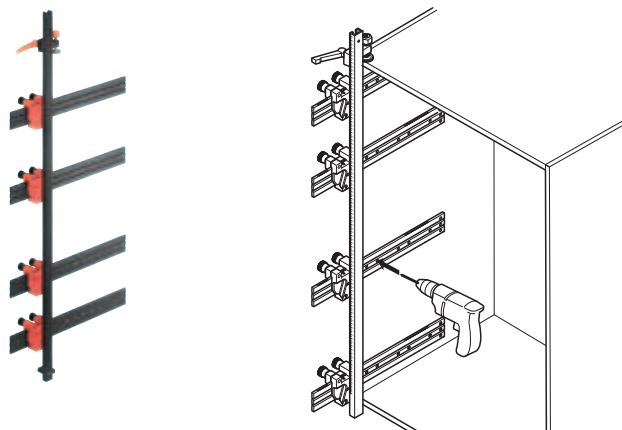
Supplied with

- 1 Blade 100 mm long
- 1 Allen key
- 1 Chuck 120 mm long
- 1 Drilling stop

Model	Cat. No.
T 65.9000	423.53.024

Packing: 1 set

Drilling jig for cabinet processing



- > Area of application: For system screws and chipboard screws, suitable for overlay and inset doors, drilling jig can be used before or after cabinet assembly
- > Version: Height and depth position adjustable using scale
- > Material: Aluminium and plastic
- > Finish/colour: Bright/orange
- > Length: 1 m

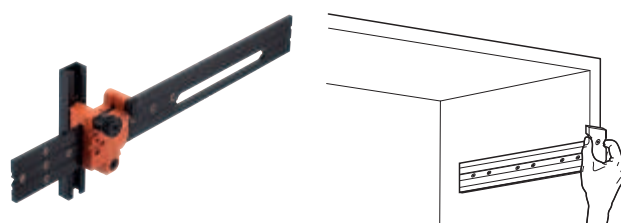
Supplied with

- 1 Beam 1,000 mm
- 4 Transfer templates (pre-mounted)
- 1 Drilling depth stop \varnothing 5 mm
- 1 Reducing sleeve \varnothing 2.5 mm

Model	Cat. No.
65.1000.01	001.34.156

Packing: 1 piece

Individual drilling jig for cabinet processing



- > Area of application: For Blum Tandem, Movento, Tandembox and Legrabox
- > Material: Aluminium and plastic
- > Finish: Bright

Supplied with

- 1 Universal drilling jig
- 1 Drilling depth stop \varnothing 5 mm
- 1 Reducing sleeve \varnothing 2.5 mm
- 1 Hex key

Model	Cat. No.
65.1051.02	423.53.035

Packing: 1 piece

Blum Tandem 560 H and 566 H, full extension ► MB 9.221

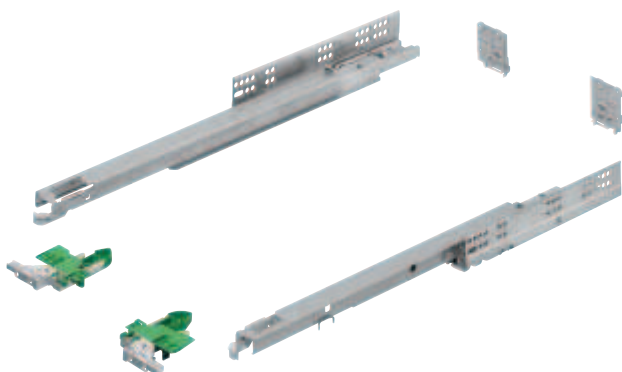
Blum Tandem 550 H, single extension ► MB 9.220

Blum Movento 760 H and 766 H, full extension ► MB 9.224



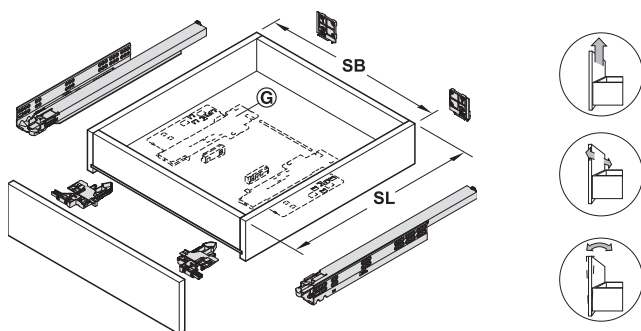
Grass Dynapro, full extension

Load bearing capacity up to 70 kg,
with Soft-close soft and self closing mechanism



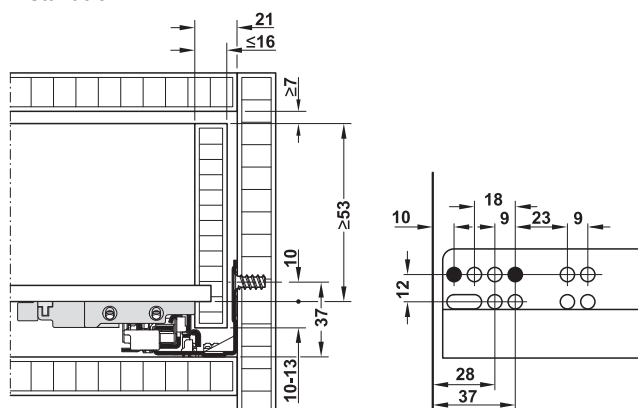
- > Same runners for both soft closing (front panels with handle) and handle-free opening and soft closing (by extension with Tipmatic Soft-close opening system)
- > Load bearing capacities of 40 and 70 kg allow modern furniture design
- > Low opening forces, excellent running properties and 100% synchronising action
- > Precise front panel adjustment without tools in up to 4 dimensions

- > Version: With liquid damper prepared for Tipmatic Soft-close
- > Adjustment facility: Max. height adjustment +3.5 mm, max. side adjustment ±1.5 mm, at snap-in coupling, max. tilt adjustment +4 mm on adjusting adapter, depth adjustment +3.5 mm via optional depth adjustment facility or -1/+3 mm via Tipmatic Soft-Close opening system
- > Material: Steel
- > Finish: Pre-galvanized
- > Dim.: Drawer width SB = internal cabinet width – 42 mm + 2 x drawer side panel thickness, front gap 0 mm, Tipmatic Soft-close front gap min. 2.5 mm



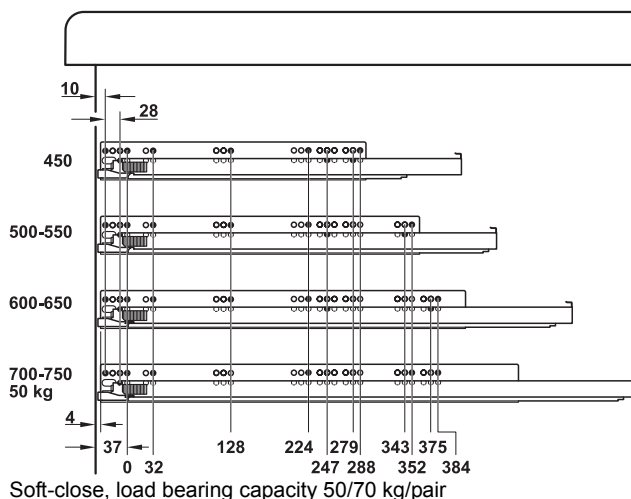
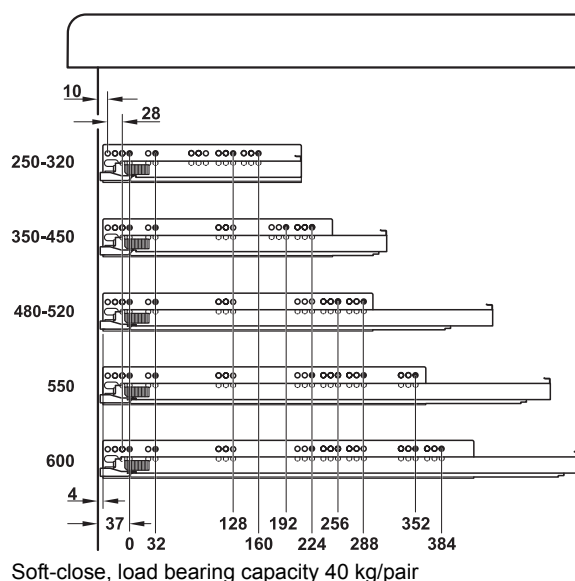
Soft-close

Installation



Note

Min. installation length with front drawers = nominal length + 3 mm
Min. installation length with internal drawers = nominal length + 21 mm



Supplied with

- 1 pair of drawer runners
- 1 pair of snap-in couplings
- 1 pair of adjusting adapters, rear
- 1 set of installation instructions

Nom. length mm	Drawer length SL mm	With Soft-close soft and self closing mechanism, 2-way adjustment	With Soft-close soft and self closing mechanism, 3-way adjustment
Load bearing capacity 40 kg/pair			
250	240	433.19.160	433.19.660
270	260	433.19.161	433.19.661
300	290	433.19.162	433.19.662
320	310	433.19.163	433.19.663
350	340	433.19.164	433.19.664
380	370	433.19.165	433.19.665
400	390	433.19.166	433.19.666
420	410	433.19.167	433.19.667
450	440	433.19.168	433.19.668
480	470	433.19.169	433.19.669
500	490	433.19.170	433.19.670
520	510	433.19.171	433.19.671
550	540	433.19.172	433.19.672
600	590	433.19.173	433.19.673
Load bearing capacity 50 kg/pair			
700	690	433.20.182	433.20.675
750	740	433.20.183	433.20.676
Load bearing capacity 70 kg/pair			
450	440	433.20.190	433.20.688
500	490	433.20.191	433.20.690
550	540	433.20.192	433.20.692
600	590	433.20.193	433.20.694
650	640	433.20.194	433.20.695

Packing: 1 pair

Order reference

The Tipmatic Soft-close opening system must be ordered in addition to each set for handle-free opening and soft closing action.

Dynapro Depth adjusters



- > Area of application: For all Dynapro Soft-close runners
- > Adjustment facility: Adjusting range +3.5 mm

Note

Not suitable for use in combination with Tipmatic Soft-close.

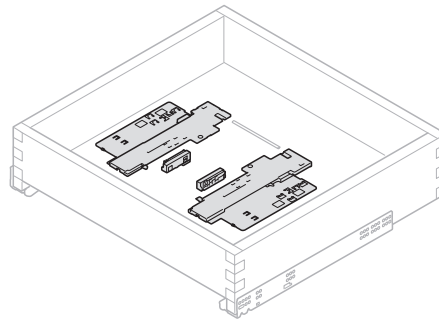
Supplied with

- 1 pair of depth adjusters

	Cat. No.
Dynapro depth adjusters	433.19.049

Packing: 1 or 5 pairs

Tipmatic Soft-close Opening system for Dynapro



- > Touch to open and gentle closing perfectly combined
- > Large touch area for release provided by synchronisation rod
- > Opening and closing function combined in one unit
- > Attachment to the runner without tools
- > Same unit for all weight classes with 3-way adjustment of the ejection force, from nominal length 270 mm

- > Area of application: For drawers and pull outs with Soft-close soft closing system, for all weight classes, from nominal length 270 mm
- > Depth adjustment: -1/+3 mm
- > Installation: The eject unit and follower are attached to the cabinet runner without tools
- > Minimum front gap 2.5 mm

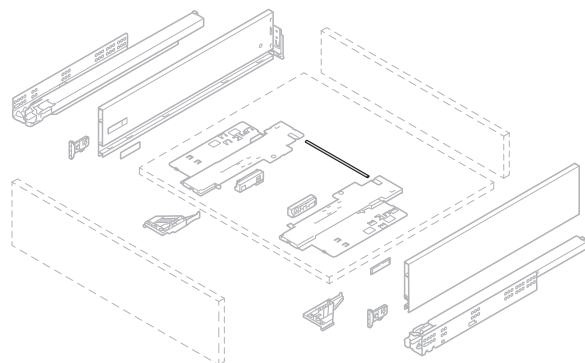
Supplied with

- 1 Tipmatic Soft-close eject unit
- 2 followers

	Cat. No.
Tipmatic Soft-close opening system	433.19.080

Packing: 1 set

→ Synchronisation rod



- > Material: Aluminium
- > Installation: For cutting to size: Internal cabinet width – 216 mm, on Tipmatic Soft-close eject unit without tools

Supplied with

- 1 synchronisation rod

For cabinet width mm	Length mm	Cat. No.
600	352	433.19.085
1200	952	433.19.086

Packing: 1 piece