



ROLLER RUNNERS





Roller runners

	Installation	Application	Load bearing capacity up to kg	Nominal length mm											Page			
				200	250	300-305	350-355	400-405	450-455	500-505	550-555	600-605	650	700		750	800	900
	Surface mounted	Single extension	25		✓	✓	✓	✓	✓	✓	✓	✓	✓	✓				▶ MB 9.257
			30			✓	✓	✓	✓	✓	✓	✓	✓	✓				▶ MB 9.258
			35			✓	✓	✓	✓	✓	✓	✓	✓	✓				▶ MB 9.258
			100							✓	✓	✓	✓	✓	✓	✓	✓	▶ MB 9.261
	Full extension	50	✓	✓	✓	✓	✓	✓	✓	✓	✓	✓	✓	✓			▶ MB 9.260	
		200								✓			✓	✓	✓	✓	▶ MB 9.261	
	Side mounted	Shelf runners, Single extension	30			✓	✓										▶ MB 9.256	
						✓	✓	✓	✓	✓	✓	✓	✓				▶ MB 9.259	
	Side mounted or shelf	Shelf and drawer runners, single extension, under unit	30			✓	✓	✓	✓	✓	✓						▶ MB 9.256	

Stainless steel roller runners

	Surface mounted	Single extension	100					✓	✓	✓	✓	✓	✓	✓			▶ MB 9.262
		Full extension	68					✓	✓	✓	✓	✓	✓				▶ MB 9.262

Guide rails

	Application	Nominal length mm					Page
		285	320	430	440	450	
	Guide rail	✓	✓	✓	✓	✓	▶ MB 9.263

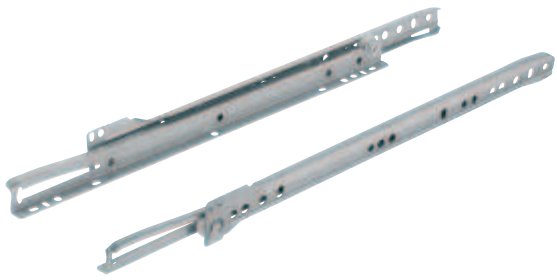
DGH-M 2017, HDE-en, 10/16; Dimensional data not binding. We reserve the right to alter specifications without notice.

9

Drawer Runners

Single extension

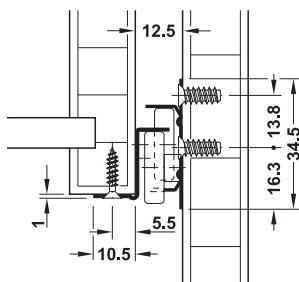
Load bearing capacity up to 20 kg



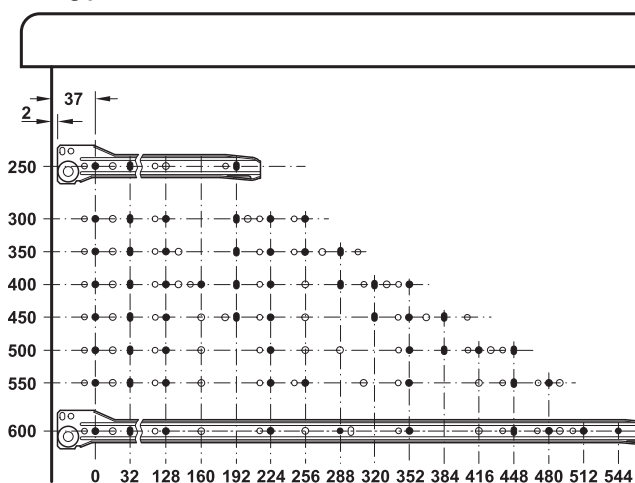
- > Version: Type of closing: Self closing, bearing: 4 friction bearing mounted polyamide rollers
- > Adjustment facility: Height adjustment via slotted holes in cabinet runner
- > Material: Steel
- > Finish/colour: Powder coated, white, RAL 9003, white aluminium, similar to, RAL 9006
- > Material thickness: 0.85 or 1 mm
- > Dim.: Max. drawer width = internal cabinet width – 25 mm
- > Installation: At drawer, surface mounted
- > Side stability provided by automatic guidance on the right hand side



Installation



Drilling pattern



Installation length L mm	Extension length AL mm
250	165
300	215
350	265
400	305
450	355
500	405
550	435
600	485

Installation length L mm	Packing pairs	Load bearing capacity kg	White, RAL 9003 0.85 mm	White aluminium, RAL 9006 0.85 mm
250	1 or 20	15	431.16.700	431.16.200
300	1 or 20	15	431.16.701	431.16.201
350	1 or 20	15	431.16.702	431.16.202
400	1 or 20	15	431.16.703	431.16.203
450	1 or 20	15	431.16.704	431.16.204
500	1 or 10	15	431.16.705	431.16.205
550	1 or 10	12	431.16.706	431.16.206
600	1 or 10	12	431.16.707	431.16.207

Installation length L mm	Packing pairs	Load bearing capacity kg	White, RAL 9003 1 mm	White aluminium, RAL 9006 1 mm
250	1 or 20	20	431.16.710	431.16.210
300	1 or 20	20	431.16.711	431.16.211
350	1 or 20	20	431.16.712	431.16.212
400	1 or 20	20	431.16.713	431.16.213
450	1 or 20	20	431.16.714	431.16.214
500	1 or 10	20	431.16.715	431.16.215
550	1 or 10	17	431.16.716	431.16.216
600	1 or 10	17	431.16.717	431.16.217

Soft and controlled closing mechanism ► MB 9.217

Information ► MB 9.215

DGH-M 2017, HDE-en, 10/16; Dimensional data not binding. We reserve the right to alter specifications without notice.



9

Roller Runners

Single extension

Load bearing capacity up to 35 kg

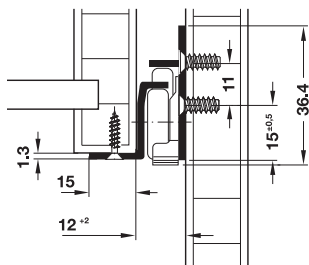


- > Version: Self-closing, double corrugation in drawer profile fixes the drawer in extended position, excellent side stability provided by automatic guidance (left) and specially designed profiles, guided by: 4 polyamid rollers with slide bearings
- > Adjustment facility: Height adjustment via slots in cabinet runner with width compensation 2 mm right
- > Material: Steel
- > Finish/colour: Powder coated, white, RAL 9010
- > Dim.: Max. drawer width = internal cabinet width – 25 mm
- > Installation: At drawer, surface mounted, dual holes in cabinet runner allow offset installation to thin intermediate panels

Note

Can be replaced by full extension at intervals of 32 mm.

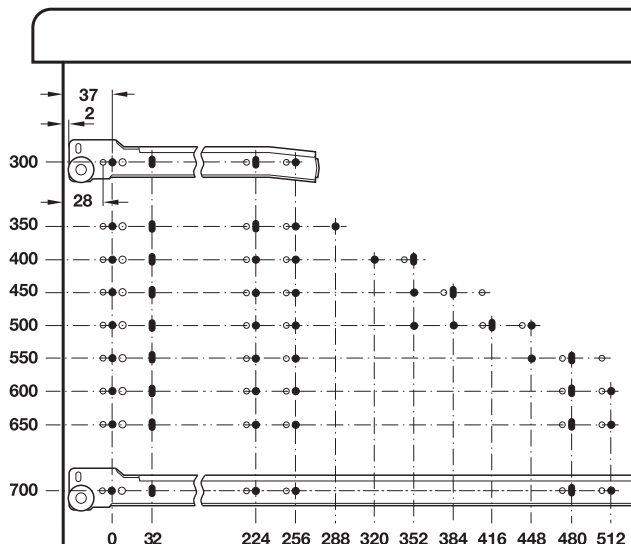
Installation



Load bearing capacity up to 35 kg



Drilling pattern



Installation length L mm	Extension length AL mm	Cat. No.
300	215	421.80.930
350	265	421.80.935
400	300	421.80.940
450	350	421.80.945
500	400	421.80.950
550	430	421.80.955
600	480	421.80.960
650	530	421.80.965
700	560	421.80.970

Packing: 1 or 20 pieces



9

Roller Runners

Soft and controlled closing mechanism	► MB 9.217
Information	► MB 9.215
Full extension	► MB 9.260

DGH-M 2017, HDE-en,10/16; Dimensional data not binding. We reserve the right to alter specifications without notice.

Full extension

Load bearing capacity 50 kg

Extremely low noise generation provided by particularly accurate guidance and integrated buffer

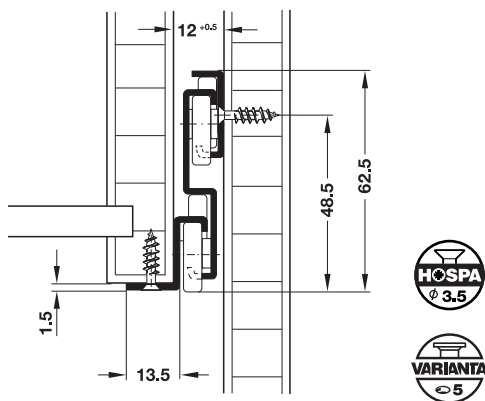


- > Version: Self closing, excellent side stability provided by , automatic guidance on both sides and specially designed, profiles, intermediate rail with stay closed feature, with soft close and catch to prevent unintended, removal, guided by: 2 silent moving rollers, 6 friction bearing mounted polyamide rollers
- > Material: Steel
- > Finish/colour: Powder coated, white, RAL 9010
- > Dim.: Max. drawer width = internal cabinet width – 25 mm
- > Installation: At drawer, surface mounted

Note

Can be replaced by single extension at 32 mm intervals.

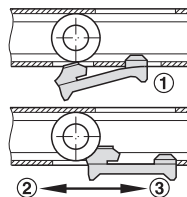
Installation



Drawer installation

- > Pull out intermediate rails as far as the position of the stay closed feature
- > Lift drawer rail rollers above intermediate rail rollers
- > Slide in runners as far as the stop

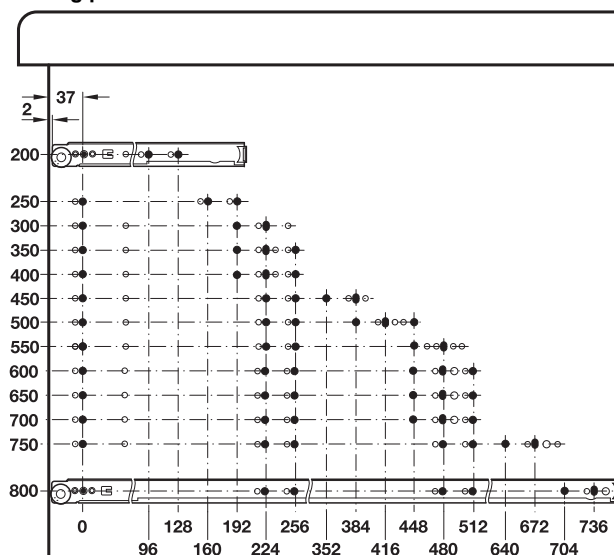
With soft close and hook-off protection device to prevent unintended removal



Check hook-off protection device before removing drawer.

- ① Extended position
- ② Open
- ③ Close

Drilling pattern



Installation length L mm	Extension length AL mm	Cat. No.
200	200	423.46.721
250	250	423.46.726
300	320	423.46.731
350	370	423.46.736
400	420	423.46.741
450	470	423.46.746
500	550	423.46.751
550	570	423.46.756
600	620	423.46.761
650	670	423.46.766
700	750	423.46.771
750	770	423.46.776
800	820	423.46.781

Packing: 1 pair

Soft and controlled closing mechanism ► MB 9.217

Information ► MB 9.215



9

Roller Runners

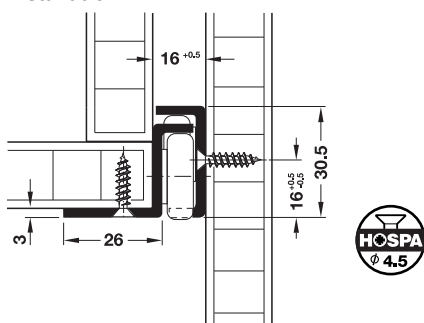
Single extension

Load bearing capacity up to 100 kg

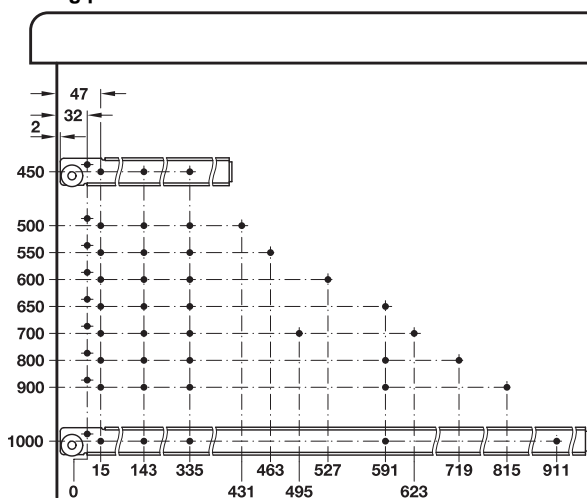


- > Version: With stay closed feature for holding in closed position and steel return stop, guided by: 4 ball bearing mounted steel rollers
- > Material: Steel
- > Finish: Galvanized
- > Dim.: Max. drawer width = internal cabinet width – 32 mm
- > Installation: At drawer, surface mounted

Installation



Drilling pattern



Installation length L mm	Extension length AL mm	Cat. No.
450	345	421.08.458
500	395	421.08.501
550	445	421.08.556
600	495	421.08.609
650	545	421.08.654
700	565	421.08.707
800	655	421.08.805
900	745	421.08.903
1000	835	421.08.109

Packing: 1 pair

Information

► MB 9.215

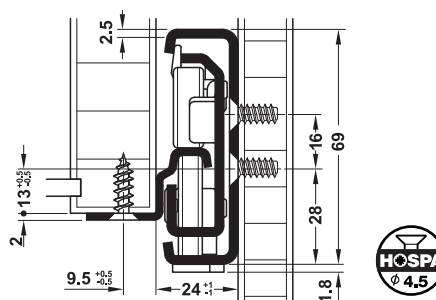
Full extension

Load bearing capacity up to 200 kg

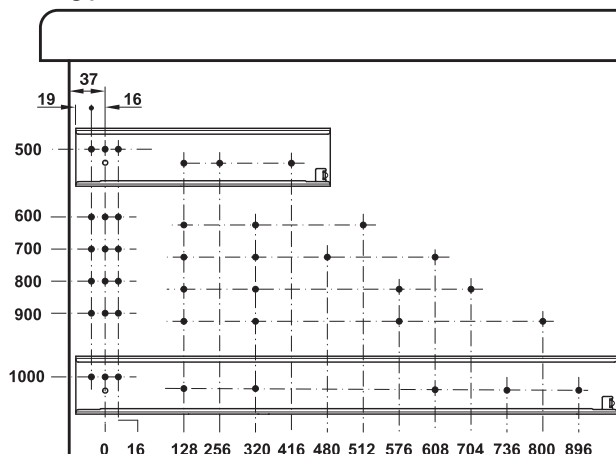


- > Version: Self-closing, excellent side stability provided by automatic guidance on both sides and special design of centre profile and guide rollers, optimum running properties provided by an integrated progressive drive, hook-off protection integrated in centre rail, guided by: 6 friction bearing mounted plastic rollers
- > Material: Runners: Steel, rollers: Plastic (POM)
- > Finish/colour: Runner: Galvanized, rollers: White
- > Dim.: Max. drawer width = internal cabinet width – 48 mm
- > Installation: At drawer, surface mounted

Installation



Drilling pattern



Installation length L mm	Extension length AL mm	Cat. No.
500	485	421.76.951
600	585	421.76.961
700	685	421.76.971
800	785	421.76.981
900	885	421.76.991
1000	985	421.76.996

Packing: 1 pair

DGH-M 2017, HDE-en, 10/16; Dimensional data not binding. We reserve the right to alter specifications without notice.



9

Roller Runners

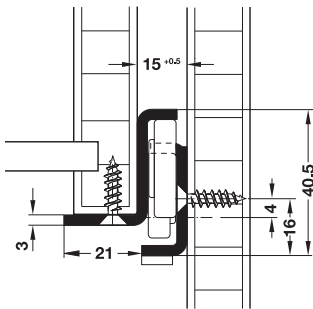
Single extension

Load bearing capacity up to 100 kg

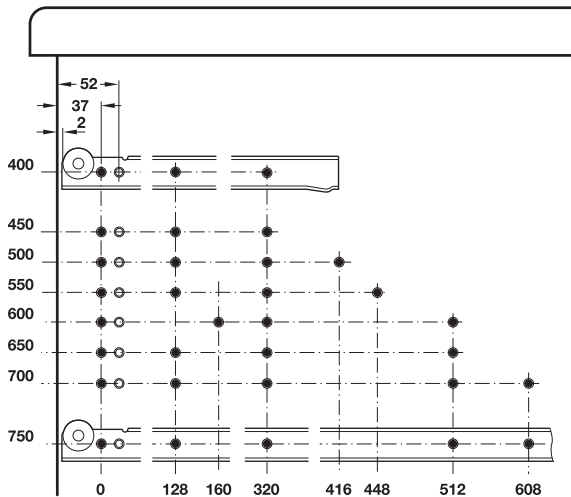


- > Area of application: For potentially corrosive environments
- > Version: Self closing, excellent side stability provided by specially designed profiles, with stay closed feature for holding in closed position and stainless steel return stop, guided by: Chrome steel ball bearings with integrated polyamide glide ring, quality 1.4509
- > Material: Stainless steel, quality 1.4509
- > Installation: At drawer, surface mounted

Installation



Drilling pattern



Installation length L mm	Extension length AL mm	Cat. No.
400	294	423.62.040
450	344	423.62.045
500	394	423.62.050
550	444	423.62.055
600	494	423.62.060
650	544	423.62.065
700	584	423.62.070
750	634	423.62.075

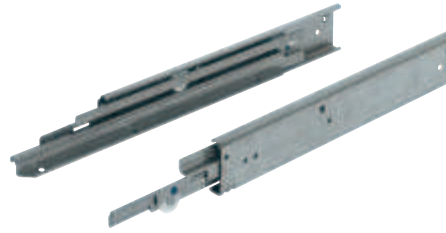
Packing: 1 pair

Order reference

Available also as heat resistant version on request.

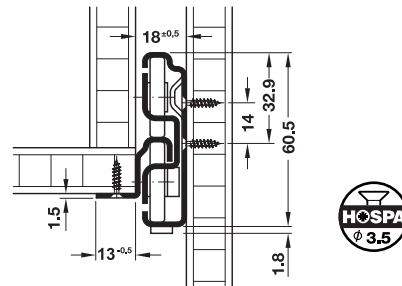
Full extension

Load bearing capacity up to 68 kg,
with progressive control

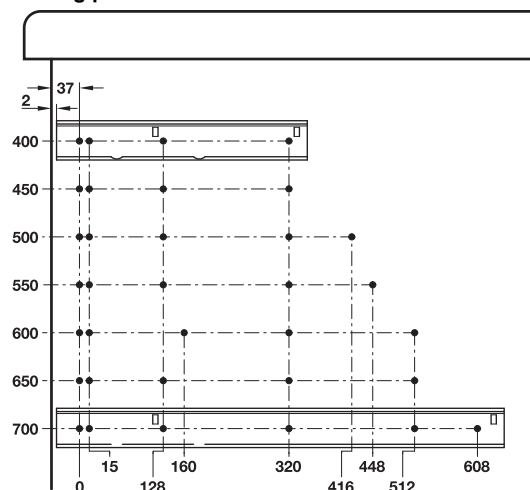


- > Area of application: For potentially corrosive environments
- > Version: Self closing, excellent side stability provided by automatic guidance on both sides and specially designed profiles, with integrated progressive drive, guided by: 8 friction bearing mounted plastic rollers (POM)
- > Material: Stainless steel, quality 1.4509
- > Dim.: Max. drawer width = internal cabinet width – 37 mm
- > Installation: At drawer, surface mounted

Installation



Drilling pattern



Installation length L mm	Extension length AL mm	Cat. No.
400	385	423.64.140
450	435	423.64.145
500	485	423.64.150
550	535	423.64.155
600	585	423.64.160
650	635	423.64.165
700	685	423.64.170

Packing: 1 pair

Order reference

Available as heat resistant version and/or overextension on request.

Information

► MB 9.215



9

Roller Runners

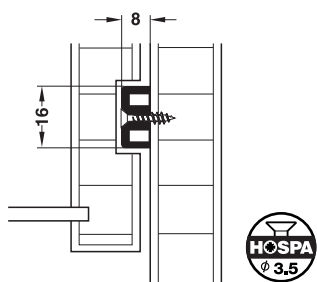
Guide rail

→ Suitable for drawers with 17 mm groove



> Material: Plastic
> Colour: White

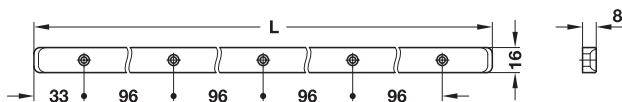
Installation



Drilling pattern



Installation length 285 mm



Installation length 450 mm

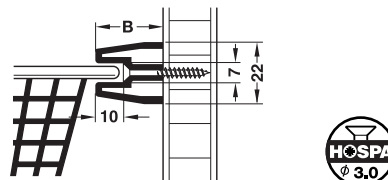
Installation length L mm	Packing pieces	Cat. No.
285	2, 20 or 200	430.15.701
450	2 or 20	430.15.738

→ For wire baskets with gliding edge

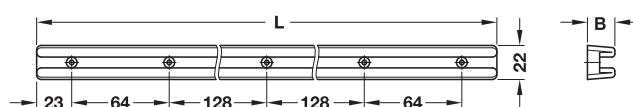


> Material: Plastic
> Colour: White

Installation



Drilling pattern



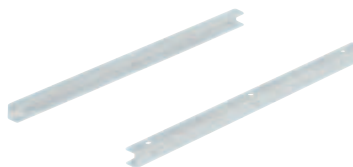
Installation length L mm	Groove depth mm	Width B mm	Cat. No.
430	10	18	430.34.718
		24	430.34.724
		26	430.34.726

Packing: 2 or 40 pieces

Wire baskets

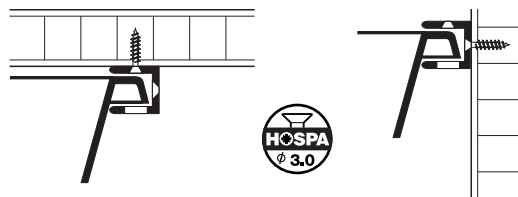
► MB 7.14

→ For universal drawer



> Material: Plastic
> Colour: Pure white, RAL 9010
> Installation: For screw fixing to side panel or beneath shelf

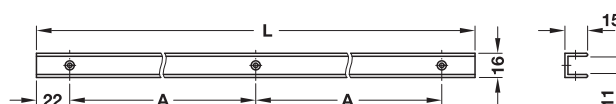
Installation



Beneath shelf

To side panel

Drilling pattern



Installation length L mm	Dim. A mm	Cat. No.
320	138	430.31.720
440	198	430.31.730

Packing: 2 or 40 pieces

DGH-M 2017, HDE-en, 10/16; Dimensional data not binding. We reserve the right to alter specifications without notice.



9

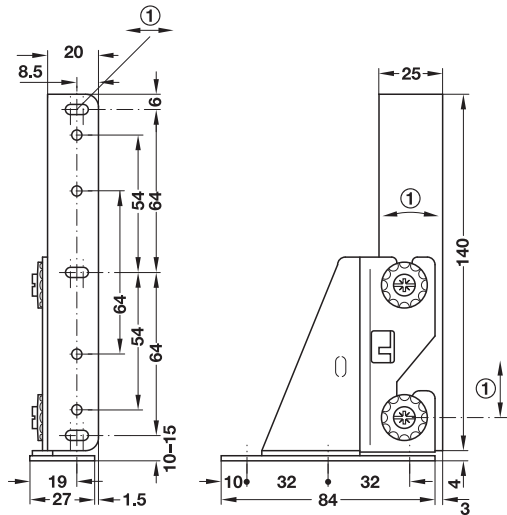
Guide Rails

Adjusting element for front panels



- > Area of application: For vertical and horizontal alignment and tilting angle adjustment of front panel
- > Version: Panel with pre-mounted adjusting elements, can be removed from front brackets
- > Adjustment facility: Independent of the runner (see drilling pattern)
- > Material: Steel
- > Finish/colour: Powder coated, white, RAL 9001
- > Installation: For screw fixing to drawer base panel

Drilling pattern



① Adjustment facility

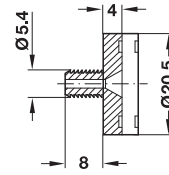
Supplied with

- 1 Pair of front brackets
- 1 Pair of adjusting elements

Panel height mm	Bracket height mm	Cat. No.
Min. 160	140	421.39.721

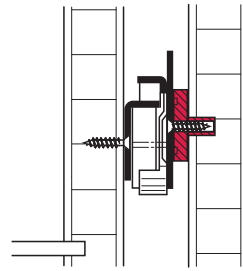
Packing: 1 pair

Spacer plate



- > Area of application: Compensating for differing installation widths or door offset
- > Material: Plastic
- > Colour: White
- > Installation: For press fitting into Ø 5 mm drill holes

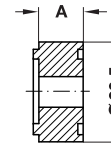
Installation



	Cat. No.
Spacer plate	037.93.708

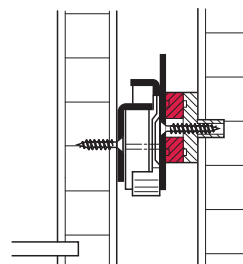
Packing: 100 pieces

→ Spacer plate extension



- > Material: Plastic

Installation



Dim. A mm	Cat. No.
3	037.93.717
5	037.93.726
9	037.93.735

Packing: 100 pieces

Concealed runners

► MB 9.218



9

Drawer Runners – Accessories