

Type **TW17**

WEH[®] Connector for pressure and function testing

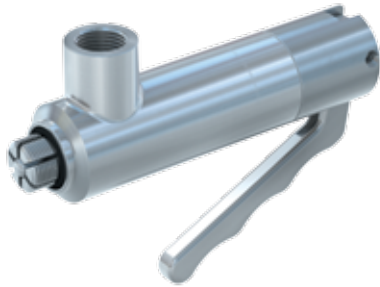
on components with internal thread



General



DESCRIPTION



Features

- Connection in seconds
- No hand tightening required
- WEH® Jaw locking mechanism
- Ergonomic design
- High-grade materials
- Different actuations
- Automation possible
- Testing devices are eliminated

The type TW17 quick connector is designed for sealing standardized internal thread applications. The higher the test pressure the tighter the WEH® Connector will clamp itself into the thread of the test piece and provides a pressure-tight connection in seconds. The front o-ring reliably seals the connection and no additional clamping devices are required. Time-consuming and expensive testing devices are eliminated.

Type TW17 is available with different actuations:

Manually with hand lever, pneumatically with valve head and pneumatically for external manual, semi or fully automatic control systems.

Special versions, e.g. connectors in longer or shorter versions, as a plug or with hydraulic actuation etc. are possible (see page 75 special solutions, catalogue no. 35).

Application

Quick connector for pneumatic and hydraulic pressure and function testing on components with internal thread, e.g. engines, cylinders, pressure vessels, hoses, fixtures, etc.

Note: For using the WEH® Connectors with pneumatic actuation and clamping jaws in an automated system please observe the technical note on page 77 in catalogue no. 35.

TECHNICAL DATA

Characteristic	Basic version
Operating pressure PS	Vacuum up to max. 350 bar
Pilot pressure	6 - 12 bar compressed air
Pilot pressure port P1	G1/8" internal thread
Pilot pressure port P2	G1/4" internal thread
Temperature range	+5 °C up to +80 °C
Leak rate	1 x 10 ⁻³ mbar x l/s
Actuation	H = manual actuation via hand lever V = pneumatic actuation via valve head P = pneumatic actuation for external manual, semi or fully automatic control systems
Material	Corrosion resistant stainless steel, anodized aluminium
Sealing material	NBR

Other designs on request

Example of use:

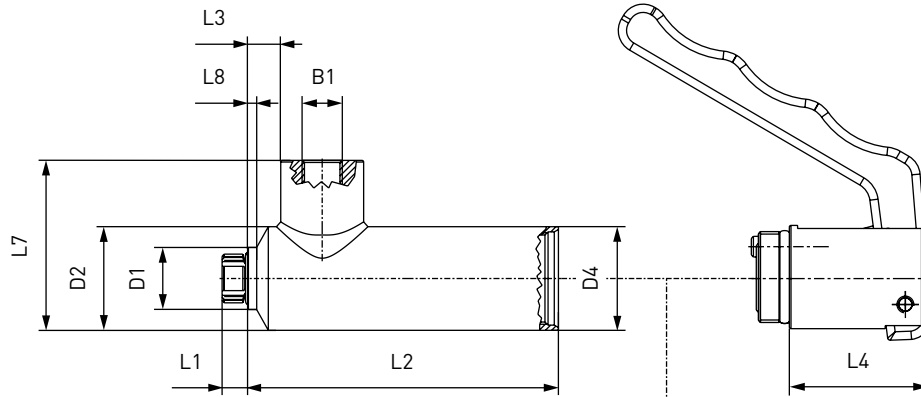


Ordering



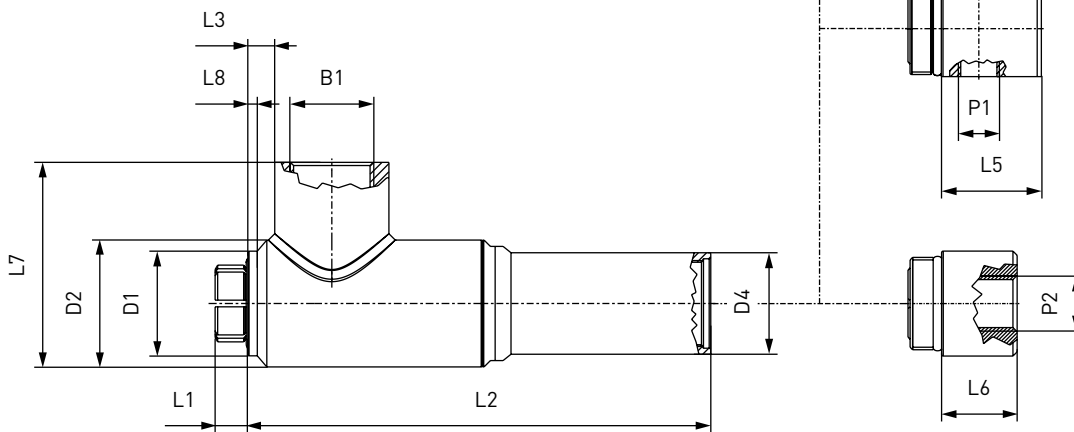
ORDERING | Quick connector TW17

approx. dimensions (mm)



H
Manually by depressing the hand lever.
Medium effort required.

Body size 1 - 4



V
Pneumatically by pressing the valve head.
Very little effort required.

P
Pneumatically for external manual, semi or fully automatic control systems

Body size 5 - 8

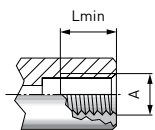
Body size	Inlet B1 (internal thread)	D1	D1 SAE*	D2	D2 SAE*	D4	L1	L2	L3	L4	L5	L6	L7	L8	L8 SAE*
1	G1/8"	15.0	15.0	25.0	25.0	25.0	8.0	75.0	8.0	33.5	24.0	18.0	44.0	2.2	2.2
2	G1/4"	19.0	20.5	27.0	27.0	27.0	9.0	75.0	9.0	32.0	18.0	18.0	40.0	2.5	4.7
3	G3/8"	23.0	25.9	32.0	32.0	32.0	12.0	88.0	9.5	35.0	18.0	18.0	50.0	2.0	4.0
4	G1/2"	26.8	28.9	37.0	37.0	37.0	12.0	88.0	8.0	35.0	18.0	18.0	55.0	2.8	4.0
5	G3/4"	33.0	40.5	40.0	45.0	32.0	14.0	145.0	8.0	35.0	18.0	18.0	68.5	3.0	8.0
6	G1"	40.0	46.5	49.0	49.0	32.0	14.0	168.0	18.0	35.0	18.0	18.0	77.0	3.0	5.0
7	G1"	52.0	-	59.0	59.0	32.0	11.0	185.5	18.0	35.0	18.0	18.0	84.0	3.0	-
8	G1"	58.0	-	77.0	69.5	32.0	10.1	202.2	23.0	35.0	18.0	18.0	90.3	4.0	-
8	G1"	70.0	-	77.0	69.5	32.0	9.0	148.5	3.2	35.0	18.0	18.0	102.0	4.0	-

* acc. to ISO 6149

Ordering



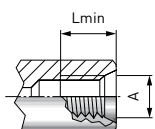
Metric ISO thread to DIN 13 - acc. to DIN 3852 part 1, form X and Y



Part No.	Body size	Thread A (internal thread)	Lmin*
TW17...-W9031-025	1	M10x1.0	7.0
TW17...-W9033-045	2	M12x1.0	9.5
TW17...-W9034-045	2	M12x1.5	9.5
TW17...-W9035-045	2	M14x1.5	9.5
TW17...-W9036-065	3	M16x1.5	10.5
TW17...-W9037-065	3	M18x1.5	10.5
TW17...-W9038-085	4	M20x1.5	10.5
TW17...-W9039-085	4	M22x1.5	10.5
TW17...-W9040-125	5	M24x1.5	11.0
TW17...-W9043-125	5	M26x1.5	11.0
TW17...-W9044-125	5	M27x2.0	11.0
TW17...-W9045-165	6	M28x1.5	12.5
TW17...-W9046-165	6	M30x1.5	12.5
TW17...-W9070-165	6	M33x2.0	12.5
TW17...-W9071-165	7	M36x2.0	12.5

* Lmin: minimum thread length

Metric ISO thread to DIN 13 - acc. to ISO 6149-1



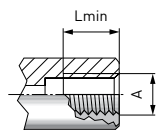
Part No.	Body size	Thread A (internal thread)	Lmin*
TW17...-W9082-025	1	M10x1.0	7.0
TW17...-W9083-045	2	M12x1.5	9.5
TW17...-W9084-045	2	M14x1.5	9.5
TW17...-W9085-065	3	M16x1.5	10.5
TW17...-W9086-065	3	M18x1.5	10.5
TW17...-W9133-085	4	M20x1.5	10.5
TW17...-W9087-085	4	M22x1.5	10.5
TW17...-W9113-125	5	M24x1.5	11.0
TW17...-W9114-125	5	M26x1.5	11.0
TW17...-W9092-125	5	M27x2.0	11.0
TW17...-W9115-165	6	M30x2.0	12.5

* Lmin: minimum thread length

Ordering



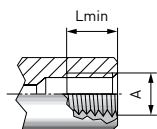
Whitworth tube thread to DIN ISO 228-1 - acc. to DIN 3852 part 2, form X and Y



Part No.	Body size	Thread A (internal thread)	Lmin*
TW17...-W9000-025	1	G1/8"	7.0
TW17...-W9001-045	2	G1/4"	9.5
TW17...-W9002-065	3	G3/8"	10.5
TW17...-W9003-085	4	G1/2"	10.5
TW17...-W9004-085	4	G5/8"	10.5
TW17...-W9005-125	5	G3/4"	11.0
TW17...-W9006-165	6	G1"	12.5
TW17...-W9058-165	7	G1 1/4"	11.0
TW17...-W9059-165	8	G1 1/2"	11.0
TW17...-W9094-165	8	G2"	11.0

* Lmin: minimum thread length

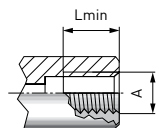
BSPT (tapered Whitworth tube thread) - acc. to DIN 3852 part 2, form X and Y



Part No.	Body size	Thread A (internal thread)	Lmin*
TW17...-W9024-025	1	BSPT 1/8"	7.0
TW17...-W9025-045	2	BSPT 1/4"	9.5
TW17...-W9026-065	3	BSPT 3/8"	10.5
TW17...-W9027-085	4	BSPT 1/2"	10.5
TW17...-W9028-085	4	BSPT 5/8"	10.5
TW17...-W9029-125	5	BSPT 3/4"	11.0
TW17...-W9030-165	6	BSPT 1"	12.5

* Lmin: minimum thread length

NPT thread (ANSI/ASME B1.20.1-1983) - acc. to SAE J476a



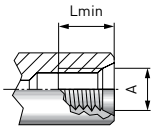
Part No.	Body size	Thread A (internal thread)	Lmin*
TW17...-W9007-025	1	NPT 1/8"	7.0
TW17...-W9008-045	2	NPT 1/4"	9.5
TW17...-W9009-065	3	NPT 3/8"	10.5
TW17...-W9010-085	4	NPT 1/2"	10.5
TW17...-W9012-125	5	NPT 3/4"	11.0
TW17...-W9013-165	6	NPT 1"	12.5

* Lmin: minimum thread length

Ordering



SAE-O-Ring Boss - acc. to SAE J1926 / ISO 11926



Part No.	Body size	Thread A (internal thread)	Lmin*
TW17...-W9078-025	1	UNF 3/8"-24	7.0
TW17...-W9047-025	1	UNF 7/16"-20	7.0
TW17...-W9048-045	2	UNF 1/2"-20	9.5
TW17...-W9049-045	2	UNF 9/16"-18	9.5
TW17...-W9052-065	3	UNF 3/4"-16	10.5
TW17...-W9053-085	4	UNF 7/8"-14	10.5
TW17...-W9055-125	5	UN 1 1/16"-12	11.0
TW17...-W9057-165	6	UN 1 3/16"-12	11.0
TW17...-W9056-165	6	UN 1 5/16"-12	11.0

* Lmin: minimum thread length

Other connector sizes and versions on request.

Required information for ordering see page 9, catalogue no. 35.

When ordering type TW17 please indicate in addition to the details requested on page 9 in catalogue no. 35 the following information:

1. Part No.

Please insert within the part no. the letter corresponding to the desired type of actuation (H, V or P) in place of the position indicator (...)

Example: TW17H-W9031-025

2. Pressure range

Please add LP = low pressure version (up to 50 bar) or HP = high pressure version (up to 350 bar) at the end of the part number.

Example: TW17H-W9031-025/HP

Accessories



ACCESSORIES

The following accessories are available for type TW17:

Screw plug

If the connector is to be used as a plug, the media inlet 'B1' will be sealed with a screw plug of brass (low pressure range) or alternatively stainless steel (high pressure range). It is recommended that the media compatibility of the seal be tested by the customer!

Low pressure

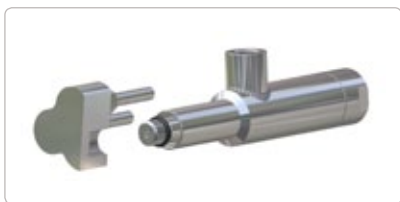


High pressure

Part No.	Description	Thread (external thread)	Pressure range
E69-9200	Screw plug (low pressure)	G1/8"	0 - 50 bar
E69-9210	Screw plug (low pressure)	G1/4"	0 - 50 bar
E69-9220	Screw plug (low pressure)	G3/8"	0 - 50 bar
E69-9230	Screw plug (low pressure)	G1/2"	0 - 50 bar
W9338	Screw plug (low pressure)	G3/4"	0 - 50 bar
W9329	Screw plug (high pressure)	G1/8"	50 - 350 bar
W9330	Screw plug (high pressure)	G1/4"	50 - 350 bar
W9331	Screw plug (high pressure)	G3/8"	50 - 350 bar
W9332	Screw plug (high pressure)	G1/2"	50 - 350 bar
W9333	Screw plug (high pressure)	G3/4"	50 - 350 bar
W9334	Screw plug (high pressure)	G1"	50 - 350 bar

SPECIAL SOLUTIONS

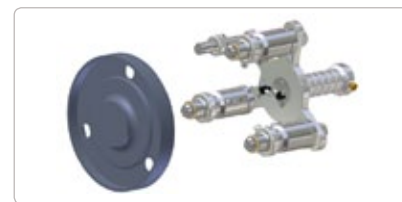
Examples:



TW17 with extension



TW17 twin connector



TW17 triple connector

Other products



OTHER PRODUCTS

You will find more products in our current catalogue no. 35



Further information on our homepage
www.weh.com

© All rights reserved, WEH GmbH 2013. Any unauthorized use is strictly forbidden. Subject to alteration. No liability will be assumed for any content. Herewith previous versions are no longer valid.

» Contacting

For queries and further information, please do not hesitate to contact us.

Manufacturer:

WEH GmbH Precision Connectors

Josef-Henle-Str. 1
89257 Illertissen / Germany

Phone: +49 7303 9609-0
Fax: +49 7303 9609-9999

eMail: sales@weh.com
www.weh.com