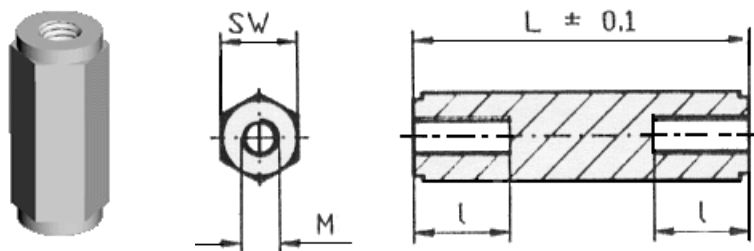


## 002 Abstandsrollen aus PA-GV, schwarz



Material: Polyamid PA -GV, temperaturbeständig bis 110 Grad C.

Farbe: schwarz

Weitere Abmessungen oder Materialien auf Anfrage!

Article	Schlüsselweite 6 - Gewinde M2,5
	mm
002 1710	10
002 1715	15
002 1720	20

Article	Schlüsselweite 6 - Gewinde M2,5
	mm
002 1725	25
002 1730	30
002 1735	35

Article	Schlüsselweite 6 - Gewinde M2,5
	mm
002 1740	40
002 1745	45
002 1750	50

Article	Schlüsselweite 6 - Gewinde M3
	mm
002 1210	10
002 1212	12
002 1215	15
002 1218	18

Article	Schlüsselweite 6 - Gewinde M3
	mm
002 1220	20
002 1225	25
002 1230	30
002 1235	35

Article	Schlüsselweite 6 - Gewinde M3
	mm
002 1240	40
002 1245	45
002 1250	50

Article	Schlüsselweite 8 - Gewinde M4
	mm
002 1310	10
002 1312	12
002 1315	15
002 1318	18

Article	Schlüsselweite 8 - Gewinde M4
	mm
002 1320	20
002 1325	25
002 1330	30
002 1335	35

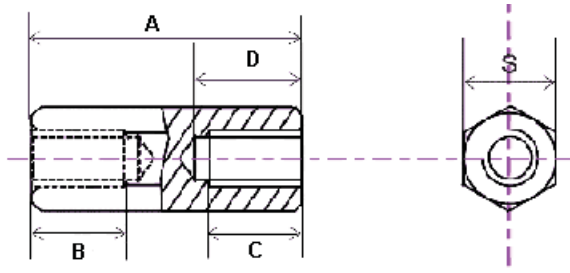
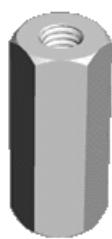
Article	Schlüsselweite 8 - Gewinde M4
	mm
002 1340	40
002 1345	45
002 1350	50

Article	Schlüsselweite 10 - Gewinde M5
	mm
002 1410	10
002 1412	12
002 1415	15
002 1418	18

Article	Schlüsselweite 10 - Gewinde M5
	mm
002 1420	20
002 1425	25
002 1430	30
002 1435	35

Article	Schlüsselweite 10 - Gewinde M5
	mm
002 1440	40
002 1445	45
002 1450	50

## 301 Abstandsrollen aus Stahl, verzinkt



Material: Stahl (S300Pb) verzinkt, gelb chromatiert (Zn3bkcC)

Weitere Abmessungen oder Materialien auf Anfrage!



Article	S mm	Gewinde	A mm	B mm	C mm	D mm
301 2050 41152	5	M2,5	5,0	5,0		5,0
301 2080 41152	5	M2,5	8,0	8,0		8,0
301 2100 41152	5	M2,5	10,0	10,0		10,0
301 2120 41152	5	M2,5	12,0	12,0		12,0
301 2150 41152	5	M2,5	15,0	15,0		15,0
301 2180 41152	5	M2,5	18,0	18,0		18,0
301 2200 41152	5	M2,5	20,0	20,0		20,0
301 2250 41152	5	M2,5	25,0	10,0	10,0	25,0
301 2300 41152	5	M2,5	30,0	10,0	10,0	30,0
301 2350 41152	5	M2,5	35,0	10,0	10,0	15,0
301 2400 41152	5	M2,5	40,0	10,0	10,0	15,0
301 2450 41152	5	M2,5	45,0	10,0	10,0	15,0
301 2500 41152	5	M2,5	50,0	10,0	10,0	15,0

Article	S mm	Gewinde	A mm	B mm	C mm	D mm
301 3050 41152	5	M3	5,0	5,0		5,0
301 3080 41152	5	M3	8,0	8,0		8,0
301 3100 41152	5	M3	10,0	10,0		10,0
301 3120 41152	5	M3	12,0	12,0		12,0
301 3150 41152	5	M3	15,0	15,0		15,0
301 3180 41152	5	M3	18,0	18,0		18,0
301 3200 41152	5	M3	20,0	20,0		20,0
301 3250 41152	5	M3	25,0	10,0	10,0	25,0
301 3300 41152	5	M3	30,0	10,0	10,0	30,0
301 3350 41152	5	M3	35,0	10,0	10,0	15,0
301 3400 41152	5	M3	40,0	10,0	10,0	15,0
301 3450 41152	5	M3	45,0	10,0	10,0	15,0
301 3500 41152	5	M3	50,0	10,0	10,0	15,0
301 3550 41152	5	M3	55,0	10,0	10,0	15,0
301 3600 41152	5	M3	60,0	10,0	10,0	15,0

Article	S mm	Gewinde	A mm	B mm	C mm	D mm
301 3051 41152	5,5	M3	5,0	5,0		5,0
301 3081 41152	5,5	M3	8,0	8,0		8,0
301 3101 41152	5,5	M3	10,0	10,0		10,0
301 3121 41152	5,5	M3	12,0	12,0		12,0
301 3151 41152	5,5	M3	15,0	15,0		15,0
301 3181 41152	5,5	M3	18,0	18,0		18,0
301 3201 41152	5,5	M3	20,0	20,0		20,0
301 3251 41152	5,5	M3	25,0	10,0	10,0	25,0
301 3301 41152	5,5	M3	30,0	10,0	10,0	30,0
301 3351 41152	5,5	M3	35,0	10,0	10,0	15,0

Article	S	Gewinde	A	B	C	D
	mm		mm	mm	mm	mm
301 3401 41152	5,5	M3	40,0	10,0	10,0	15,0
301 3451 41152	5,5	M3	45,0	10,0	10,0	15,0
301 3501 41152	5,5	M3	50,0	10,0	10,0	15,0
301 3551 41152	5,5	M3	55,0	10,0	10,0	15,0
301 3601 41152	5,5	M3	60,0	10,0	10,0	15,0

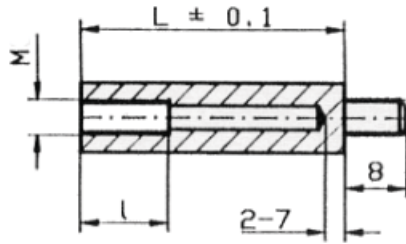
Article	S	Gewinde	A	B	C	D
	mm		mm	mm	mm	mm
301 4050 41152	7	M4	5,0	5,0		5,0
301 4080 41152	7	M4	8,0	8,0		8,0
301 4100 41152	7	M4	10,0	10,0		10,0
301 4120 41152	7	M4	12,0	12,0		12,0
301 4150 41152	7	M4	15,0	15,0		15,0
301 4180 41152	7	M4	18,0	18,0		18,0
301 4200 41152	7	M4	20,0	20,0		20,0
301 4250 41152	7	M4	25,0	10,0	10,0	25,0
301 4300 41152	7	M4	30,0	10,0	10,0	30,0
301 4350 41152	7	M4	35,0	10,0	10,0	15,0
301 4400 41152	7	M4	40,0	10,0	10,0	15,0
301 4450 41152	7	M4	45,0	10,0	10,0	15,0
301 4500 41152	7	M4	50,0	10,0	10,0	15,0
301 4550 41152	7	M4	55,0	10,0	10,0	15,0
301 4600 41152	7	M4	60,0	10,0	10,0	15,0
301 4700 41152	7	M4	70,0	10,0	10,0	15,0
301 4800 41152	7	M4	80,0	10,0	10,0	15,0

Article	S	Gewinde	A	B	C	D
	mm		mm	mm	mm	mm
301 5100 41152	8	M5	10,0	10,0		10,0
301 5120 41152	8	M5	12,0	12,0		12,0
301 5150 41152	8	M5	15,0	15,0		15,0
301 5180 41152	8	M5	18,0	18,0		18,0
301 5200 41152	8	M5	20,0	10,0	10,0	20,0
301 5250 41152	8	M5	25,0	10,0	10,0	25,0
301 5300 41152	8	M5	30,0	10,0	10,0	30,0
301 5350 41152	8	M5	35,0	10,0	10,0	15,0
301 5400 41152	8	M5	40,0	10,0	10,0	15,0
301 5450 41152	8	M5	45,0	10,0	10,0	15,0
301 5500 41152	8	M5	50,0	10,0	10,0	15,0
301 5550 41152	8	M5	55,0	10,0	10,0	15,0
301 5600 41152	8	M5	60,0	10,0	10,0	15,0
301 5700 41152	8	M5	70,0	10,0	10,0	15,0

Article	S	Gewinde	A	B	C	D
	mm		mm	mm	mm	mm
301 6100 41152	10	M6	10,0	10,0		10,0
301 6120 41152	10	M6	12,0	12,0		12,0
301 6150 41152	10	M6	15,0	15,0		15,0
301 6180 41152	10	M6	18,0	18,0		18,0
301 6200 41152	10	M6	20,0	20,0		20,0
301 6250 41152	10	M6	25,0	25,0		25,0
301 6300 41152	10	M6	30,0	13,0	13,0	30,0
301 6350 41152	10	M6	35,0	13,0	13,0	35,0
301 6400 41152	10	M6	40,0	13,0	13,0	18,0
301 6450 41152	10	M6	45,0	13,0	13,0	18,0
301 6500 41152	10	M6	50,0	13,0	13,0	18,0

Article	S	Gewinde	A	B	C	D
	mm		mm	mm	mm	mm
301 6550 41152	10	M6	55,0	13,0	13,0	18,0
301 6600 41152	10	M6	60,0	13,0	13,0	18,0
301 6700 41152	10	M6	70,0	13,0	13,0	18,0

## 002 Abstandsrollen aus PA-GV, schwarz



Material: Polyamid PA -GV, temperaturbeständig bis 110 Grad C.  
Farbe: schwarz



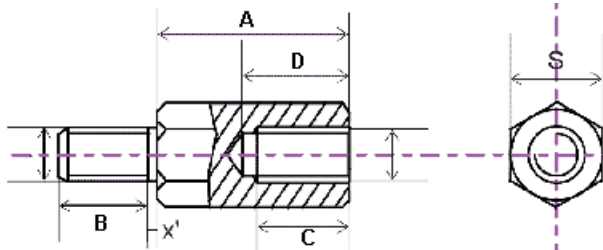
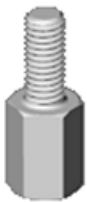
Weitere Abmessungen oder Materialien auf Anfrage!

Article	Schlüsselweite 6 - Gewinde M3	Article	Schlüsselweite 6 - Gewinde M3	Article	Schlüsselweite 6 - Gewinde M3
	mm		mm		mm
002 1508	8	002 1518	18	002 1535	35
002 1510	10	002 1520	20	002 1540	40
002 1512	12	002 1525	25	002 1545	45
002 1515	15	002 1530	30	002 1550	50

Article	Schlüsselweite 8 - Gewinde M4	Article	Schlüsselweite 8 - Gewinde M4	Article	Schlüsselweite 8 - Gewinde M4
	mm		mm		mm
002 1610	10	002 1620	20	002 1640	40
002 1612	12	002 1625	25	002 1645	45
002 1615	15	002 1630	30	002 1650	50
002 1618	18	002 1635	35		

## 304 Abstandsrollen aus Stahl, verzinkt



Material: Stahl (S300Pb) verzinkt, gelb chromatiert (Zn3bkC)

x' = max. 1 mm bei S = 5 und 5,5.  
x' = max. 1,4 mm bei S = 7.  
x' = max. 1,6 mm bei S = 8.  
x' = max. 2 mm bei S = 10.

Weitere Abmessungen oder Materialien auf Anfrage!

Article	S	Innengewinde	Außengewinde	A	B	C	D
	mm			mm	mm	mm	mm
304 3050 41152	5	M3	M3	5,0	8,0	3,0	4,0
304 3060 41152	5	M3	M3	6,0	8,0	3,0	4,0
304 3070 41152	5	M3	M3	7,0	8,0	3,0	4,0
304 3080 41152	5	M3	M3	8,0	8,0	4,0	6,0
304 3100 41152	5	M3	M3	10,0	8,0	6,0	8,0
304 3120 41152	5	M3	M3	12,0	8,0	8,0	10,0
304 3150 41152	5	M3	M3	15,0	8,0	8,0	13,0
304 3180 41152	5	M3	M3	18,0	8,0	8,0	15,0

Article	S	Innengewinde	Außengewinde	A	B	C	D
	mm			mm	mm	mm	mm
304 3250 41152	5	M3	M3	25,0	10,0	10,0	15,0
304 3300 41152	5	M3	M3	30,0	10,0	10,0	15,0
304 3350 41152	5	M3	M3	35,0	10,0	10,0	15,0

Article	S	Innengewinde	Außengewinde	A	B	C	D
	mm			mm	mm	mm	mm
304 3400 41152	5	M3	M3	40,0	10,0	10,0	15,0
304 3450 41152	5	M3	M3	45,0	10,0	10,0	15,0
304 3500 41152	5	M3	M3	50,0	10,0	10,0	15,0
304 3550 41152	5	M3	M3	55,0	10,0	10,0	15,0
304 3600 41152	5	M3	M3	60,0	10,0	10,0	15,0
304 3200 41152	5	M3	M3	20,0	8,0	8,0	15,0

Article	S	Innengewinde	Außengewinde	A	B	C	D
	mm			mm	mm	mm	mm
304 3051 41152	5,5	M3	M3	5,0	8,0	3,0	4,0
304 3081 41152	5,5	M3	M3	8,0	8,0	4,0	6,0
304 3101 41152	5,5	M3	M3	10,0	8,0	6,0	8,0
304 3121 41152	5,5	M3	M3	12,0	8,0	8,0	10,0
304 3151 41152	5,5	M3	M3	15,0	8,0	8,0	13,0
304 3181 41152	5,5	M3	M3	18,0	8,0	8,0	15,0
304 3201 41152	5,5	M3	M3	20,0	8,0	8,0	15,0
304 3251 41152	5,5	M3	M3	25,0	10,0	10,0	15,0
304 3301 41152	5,5	M3	M3	30,0	10,0	10,0	15,0
304 3351 41152	5,5	M3	M3	35,0	10,0	10,0	15,0
304 3401 41152	5,5	M3	M3	40,0	10,0	10,0	15,0
304 3451 41152	5,5	M3	M3	45,0	10,0	10,0	15,0
304 3501 41152	5,5	M3	M3	50,0	10,0	10,0	15,0
304 3551 41152	5,5	M3	M3	55,0	10,0	10,0	15,0
304 3601 41152	5,5	M3	M3	60,0	10,0	10,0	15,0

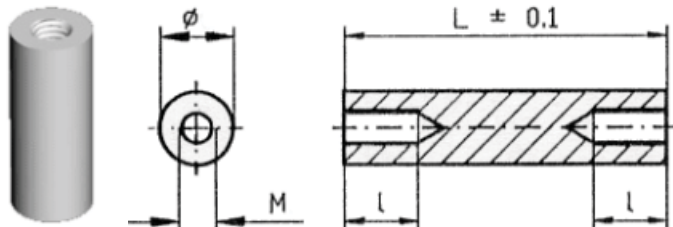
Article	S	Innengewinde	Außengewinde	A	B	C	D
	mm			mm	mm	mm	mm
304 4050 41152	7	M4	M4	5,0	8,0	3,0	4,0
304 4080 41152	7	M4	M4	8,0	8,0	4,0	6,0
304 4100 41152	7	M4	M4	10,0	8,0	6,0	8,0
304 4120 41152	7	M4	M4	12,0	8,0	8,0	10,0
304 4150 41152	7	M4	M4	15,0	8,0	8,0	13,0
304 4180 41152	7	M4	M4	18,0	8,0	8,0	15,0
304 4200 41152	7	M4	M4	20,0	8,0	8,0	15,0
304 4250 41152	7	M4	M4	25,0	10,0	10,0	15,0
304 4300 41152	7	M4	M4	30,0	10,0	10,0	15,0
304 4350 41152	7	M4	M4	35,0	10,0	10,0	15,0
304 4400 41152	7	M4	M4	40,0	10,0	10,0	15,0
304 4450 41152	7	M4	M4	45,0	10,0	10,0	15,0
304 4500 41152	7	M4	M4	50,0	10,0	10,0	15,0
304 4550 41152	7	M4	M4	55,0	10,0	10,0	15,0
304 4600 41152	7	M4	M4	60,0	10,0	10,0	15,0
304 4700 41152	7	M4	M4	70,0	10,0	10,0	15,0
304 4800 41152	7	M4	M4	80,0	10,0	10,0	15,0

Article	S	Innengewinde	Außengewinde	A	B	C	D
	mm			mm	mm	mm	mm
304 5100 41152	8	M5	M5	10,0	8,0	6,0	8,0
304 5120 41152	8	M5	M5	12,0	8,0	8,0	10,0
304 5150 41152	8	M5	M5	15,0	8,0	8,0	13,0
304 5180 41152	8	M5	M5	18,0	8,0	8,0	15,0
304 5200 41152	8	M5	M5	20,0	8,0	8,0	15,0
304 5250 41152	8	M5	M5	25,0	10,0	10,0	15,0
304 5300 41152	8	M5	M5	30,0	10,0	10,0	15,0
304 5350 41152	8	M5	M5	35,0	10,0	10,0	15,0
304 5400 41152	8	M5	M5	40,0	10,0	10,0	15,0

Article	S	Innengewinde	Außengewinde	A	B	C	D
	mm			mm	mm	mm	mm
304 5450 41152	8	M5	M5	45,0	10,0	10,0	15,0
304 5500 41152	8	M5	M5	50,0	10,0	10,0	15,0
304 5550 41152	8	M5	M5	55,0	10,0	10,0	15,0
304 5600 41152	8	M5	M5	60,0	10,0	10,0	15,0
304 5700 41152	8	M5	M5	70,0	10,0	10,0	15,0

Article	S	Innengewinde	Außengewinde	A	B	C	D
	mm			mm	mm	mm	mm
304 6103 41152	10	M6	M6	10,0	12,0	6,0	8,0
304 6123 41152	10	M6	M6	12,0	12,0	8,0	10,0
304 6153 41152	10	M6	M6	15,0	12,0	8,0	13,0
304 6183 41152	10	M6	M6	18,0	12,0	12,0	16,0
304 6203 41152	10	M6	M6	20,0	12,0	13,0	18,0
304 6253 41152	10	M6	M6	25,0	12,0	13,0	18,0
304 6303 41152	10	M6	M6	30,0	12,0	13,0	18,0
304 6353 41152	10	M6	M6	35,0	12,0	13,0	18,0
304 6403 41152	10	M6	M6	40,0	12,0	13,0	18,0
304 6453 41152	10	M6	M6	45,0	12,0	13,0	18,0
304 6503 41152	10	M6	M6	50,0	12,0	13,0	18,0
304 6553 41152	10	M6	M6	55,0	12,0	13,0	18,0
304 6603 41152	10	M6	M6	60,0	12,0	13,0	18,0
304 6703 41152	10	M6	M6	70,0	12,0	13,0	18,0
304 6803 41152	10	M6	M6	80,0	12,0	13,0	18,0
304 6903 41152	10	M6	M6	90,0	12,0	13,0	18,0

## 002 Abstandsrollen mit Gewinde, rund



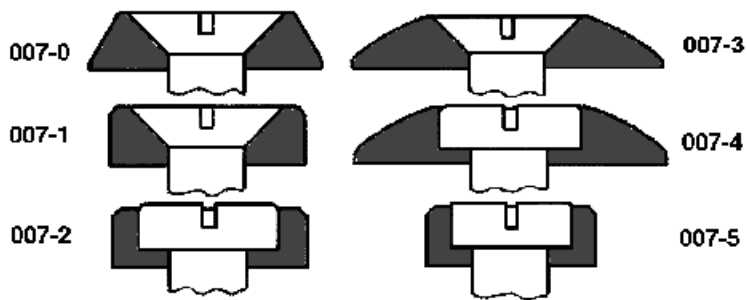
Material: Polyamid PA -GV, temperaturbeständig bis 110 Grad C.  
Farbe: schwarz

Weitere Abmessungen oder auch in Metall auf Anfrage!

Article	Gewinde M3 - Ø 6	Article	Gewinde M3 - Ø 6	Article	Gewinde M3 - Ø 6
	mm		mm		mm
002 1005	5	002 1018	18	002 1040	40
002 1008	8	002 1020	20	002 1045	45
002 1010	10	002 1025	25	002 1050	50
002 1012	12	002 1030	30	002 1055	55
002 1015	15	002 1035	35	002 1060	60

Article	Gewinde M4 - Ø 8	Article	Gewinde M4 - Ø 8	Article	Gewinde M4 - Ø 8
	mm		mm		mm
002 1105	5	002 1118	18	002 1140	40
002 1108	8	002 1120	20	002 1145	45
002 1110	10	002 1125	25	002 1150	50
002 1112	12	002 1130	30	002 1155	55
002 1115	15	002 1135	35	002 1160	60

## 007 Schraubenrosetten

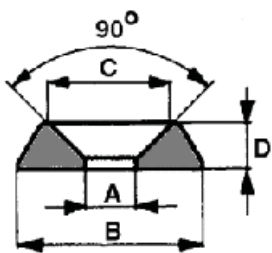


Zum Schutz von Oberflächen wie Email, Lackfarbe, Textil, Glas, Keramik usw., aber auch geeignet für Dekorationszwecke.

Material: Polyamid-6  
Farben: schwarz oder weiß

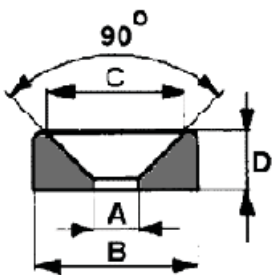


## 007 Schraubenrosetten passend für DIN 95, 97, 963, 964, 965, 966, 7963, 7972, 7982, 7983, 7991, 7995, 7997



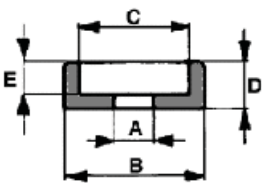
Article	A	B	C	D	M	alpha	WW
	mm	mm	mm	mm		°	
007 0090	3,2	10,5	7,0	3,0	3,0	90	1/8"
007 0110	4,3	12,5	9,0	3,0	4,0	90	5/32"
007 0130	5,3	14,5	11,0	3,2	5,0	90	3/16"
007 0150	6,4	16,0	13,0	4,5	6,0	90	1/4"

## 007 1... Schraubenrosetten passend für DIN 95, 97, 963, 964, 965, 966, 7963, 7972, 7982, 7983, 7991, 7995, 7997



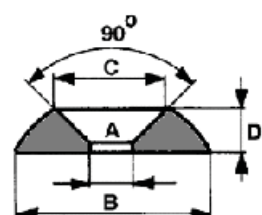
Article	A	B	C	D	M	alpha	WW
	mm	mm	mm	mm		°	
007 1025	2,7	6,8	5,0	2,0	2,5	90	3/32"
007 1030	3,2	8,5	6,0	2,2	3,0	90	1/8"
007 1040	4,3	10,5	8,0	2,8	4,0	90	5/32"
007 1050	5,3	12,7	10,0	3,4	5,0	90	3/16"
007 1060	6,4	15,0	12,0	4,0	6,0	90	1/4"
007 1080	8,4	20,0	16,0	5,0	8,0	90	5/16"

## 007 2... Schraubenrosetten passend für DIN 85, 96, 7971, 7981, 7985, 7996



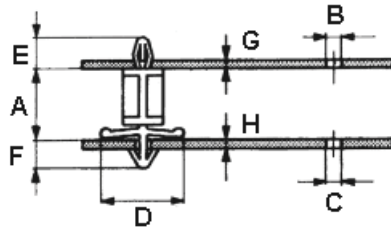
Article	A	B	C	D	E	M	WW
	mm	mm	mm	mm	mm		
007 2025	2,7	6,8	5,0	2,0	1,0	2,5	3/32"
007 2030	3,2	8,5	6,0	2,2	1,2	3,0	1/8"
007 2040	4,3	10,5	8,0	2,8	1,7	4,0	5/32"
007 2050	5,3	12,7	10,0	3,4	2,2	5,0	3/16"
007 2060	6,4	15,0	12,0	4,0	2,7	6,0	1/4"
007 2080	8,4	20,0	16,0	5,0	3,5	8,0	5/16"

## 007 3... Schraubenrosetten passend für DIN 95, 97, 963, 964, 965, 966, 7963, 7972, 7982, 7983, 7991, 7995, 7997



Article	A	B	C	D	M	alpha	WW
	mm	mm	mm	mm		°	
007 3030	3,2	14,0	7,0	2,9	3,0	90	1/8"
007 3040	4,3	16,0	9,0	3,5	4,0	90	5/32"
007 3050	5,3	18,0	11,0	3,8	5,0	90	3/16"
007 3060	6,4	22,0	13,0	4,5	6,0	90	1/4"

## 100 Printplattenhalter mit Schnappverbindung

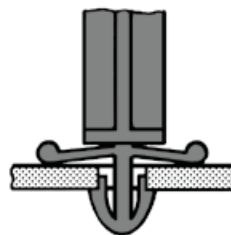
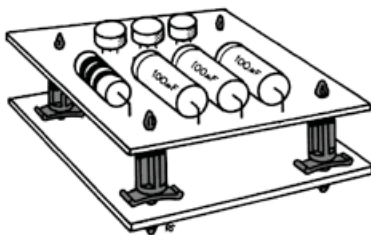


Keine Schrauben und Muttern. Einfache "Einschnapp-Montage".

Material: Polyamid-66

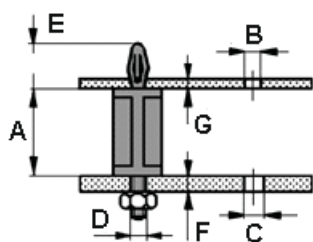
Farbe: natur

Article	A	B	C	D	E	F	G	H
	mm	mm	mm	mm	mm	mm	mm	mm
100 0050	4,8	4,0	4,8	14,0	9,0	8,0	1,4 - 1,8	0,4 - 2,0
100 0060	6,4	4,0	4,8	14,0	10,0	8,0	1,4 - 1,8	0,4 - 2,0
100 0080	8,0	4,0	4,8	14,0	9,0	8,0	1,4 - 1,8	0,4 - 2,0
100 0100	9,5	4,0	4,8	14,0	9,0	8,0	1,4 - 1,8	0,4 - 2,0
100 0110	11,4	4,0	4,8	14,0	9,0	8,0	1,4 - 1,8	0,4 - 2,0
100 0120	12,7	4,0	4,8	14,0	9,0	8,0	1,4 - 1,8	0,4 - 2,0
100 0140	14,4	4,0	4,8	14,0	9,0	8,0	1,4 - 1,8	0,4 - 2,0
100 0150	15,8	4,0	4,8	14,0	9,0	8,0	1,4 - 1,8	0,4 - 2,0
100 0170	17,5	4,0	4,8	14,0	9,0	8,0	1,4 - 1,8	0,4 - 2,0
100 0190	19,0	4,0	4,8	14,0	9,0	8,0	1,4 - 1,8	0,4 - 2,0
100 0210	21,0	4,0	4,8	14,0	9,0	8,0	1,4 - 1,8	0,4 - 2,0
100 0372	22,2	4,0	4,8	14,0	9,0	8,0	1,4 - 1,8	0,4 - 2,0
100 0230	23,8	4,0	4,8	14,0	9,0	8,0	1,4 - 1,8	0,4 - 2,0
100 0250	25,4	4,0	4,8	14,0	9,0	8,0	1,4 - 1,8	0,4 - 2,0
100 0270	27,0	4,0	4,8	14,0	9,0	8,0	1,4 - 1,8	0,4 - 2,0
100 0380	28,6	4,0	4,8	14,0	9,0	8,0	1,4 - 1,8	0,4 - 2,0
100 0300	30,0	4,0	4,8	14,0	9,0	8,0	1,4 - 1,8	0,4 - 2,0





## 100 1... Printplattenhalter, schraubbar

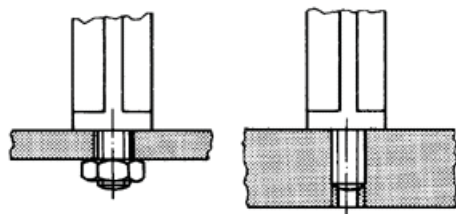
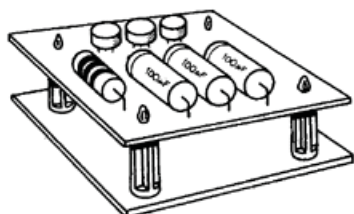


An einer Seite mit Gewinde M4 versehen für die Befestigung mit einer Mutter. Auch zu kombinieren mit Printplattenverbinder Typ 138.

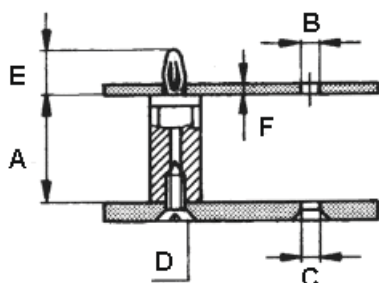
Material: Polyamid-66  
Farbe: natur



Article	A	B	C	D	E	F	G
	mm	mm	mm		mm	mm	mm
100 1048	4,8	4,0	4,2	M4	9,0	0,5 - 3,0	1,0 - 1,8
100 1060	6,4	4,0	4,0	M4	10,2	0,4 - 3,0	1,0 - 2,0
100 1079	7,9	4,0	4,2	M4	9,0	0,5 - 3,0	1,0 - 1,8
100 1090	9,5	4,0	4,0	M4	10,2	0,4 - 3,0	1,0 - 2,0
100 1111	11,1	4,0	4,2	M4	9,0	0,5 - 3,0	1,0 - 1,8
100 1127	12,7	4,0	4,2	M4	9,0	0,5 - 3,0	1,0 - 1,8
100 1143	14,3	4,0	4,2	M4	9,0	0,5 - 3,0	1,0 - 1,8
100 1159	15,9	4,0	4,2	M4	9,0	0,5 - 3,0	1,0 - 1,8
100 1175	17,5	4,0	4,2	M4	9,0	0,5 - 3,0	1,0 - 1,8
100 1191	19,1	4,0	4,2	M4	9,0	0,5 - 3,0	1,0 - 1,8
100 1220	20,6	4,0	4,2	M4	9,0	0,5 - 3,0	1,0 - 1,8
100 1222	22,2	4,0	4,2	M4	9,0	0,5 - 3,0	1,0 - 1,8
100 1238	23,8	4,0	4,2	M4	9,0	0,5 - 3,0	1,0 - 1,8
100 1254	25,4	4,0	4,2	M4	9,0	0,5 - 3,0	1,0 - 1,8
100 1270	27,0	4,0	4,2	M4	9,0	0,5 - 3,0	1,0 - 1,8
100 1286	28,6	4,0	4,2	M4	9,0	0,5 - 3,0	1,0 - 1,8



## 100 2... Printplattenhalter mit Befestigungsloch

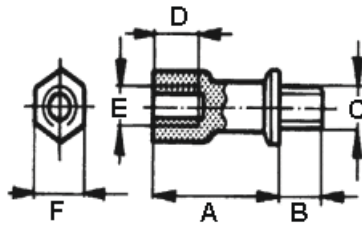


Mit Befestigungsloch für die Montage mittels selbstschneidender Schraube. Eine stabile Befestigung, dennoch einfach zu demontieren.

Material: Polyamid-66  
Farbe: natur

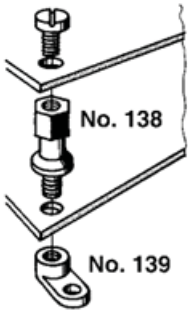
Article	A	B	C	D	E	F	Article	A	B	C	D	E	F
	mm	mm	mm	mm	mm	mm		mm	mm	mm	mm	mm	mm
100 2060	6,4	4,0	3,5	3,5	10,2	1,0 - 1,7	100 2190	19,1	4,0	3,5	3,5	10,2	1,0 - 1,7
100 2090	9,4	4,0	3,5	3,5	10,2	1,0 - 1,7	100 2220	22,2	4,0	3,5	3,5	10,2	1,0 - 1,7
100 2130	12,7	4,0	3,5	3,5	10,2	1,0 - 1,7	100 2250	25,4	4,0	3,5	3,5	10,2	1,0 - 1,7
100 2160	15,9	4,0	3,5	3,5	10,2	1,0 - 1,7	100 2290	28,6	4,0	3,5	3,5	10,2	1,0 - 1,7

### 138 Printplattenverbinder, schraubbar



Mehrere Printplatten können hiermit gekoppelt werden. Mit dem Plattenfuß Art.-Nr. 139 0040 ist eine Vormontage von Printplattenpaketen möglich. Kann auch mit den Distanzhülsen 005 oder den Printplattenhaltern Typ 100 1... kombiniert werden.

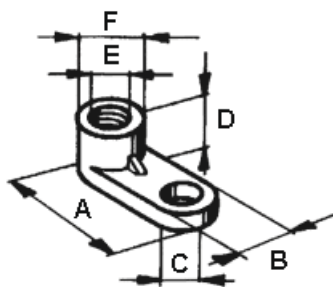
Material: Polyamid-6 + 30 % GV  
Farbe: natur



Article	A	B	C	D	E	F
	mm	mm		mm		mm
138 0050	10,0	5,0	M3	5,5	M3	5,5
138 0060	15,0	5,0	M3	5,5	M3	5,5
138 0070	20,0	5,0	M3	5,5	M3	5,5
138 0080	25,0	5,0	M3	5,5	M3	5,5
138 0090	30,0	5,0	M3	5,5	M3	5,5

Article	A	B	C	D	E	F
	mm	mm		mm		mm
138 0100	10,0	6,0	M4	6,5	M4	7,0
138 0150	15,0	6,0	M4	6,5	M4	7,0
138 0200	20,0	6,0	M4	6,5	M4	7,0
138 0250	25,0	6,0	M4	6,5	M4	7,0
138 0300	30,0	6,0	M4	6,5	M4	7,0

### 139 Printplattenfuß, schraubbar



Article	A	B	C	D	E	F
	mm	mm	mm	mm		mm
139 0300	17,0	7,0	4,0	5,5	M3	7,0
139 0400	17,0	7,0	4,0	6,5	M4	7,0

