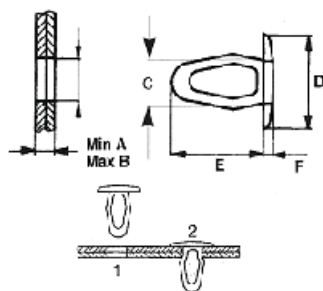


091 Treibstifte/Hohniete



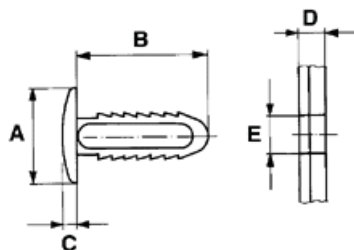
Einfache Montage durch Daumendruck. Die Treibstifte bieten eine günstige Möglichkeit, Metall, Kunststoff, Holz und anderes dünnwandiges Material zu befestigen. Beständig gegen Vibration, Abnutzung und Korrosion. Wiederverwendbar! Auch als Stöpsel oder Abdeckkappe zu verwenden.

Material: Polyamid-6.6

Farben: natur Endnummer 000, schwarz 699 und 599

Article	A - B	C	D	E	F	Bohrloch
	mm	mm	mm	mm	mm	mm
091 1001 000	0,2 - 0,8	1,7	2,5	3,2	0,5	1,6
091 0000 000	0,8 - 3,6	2,6	7,8	12,0	1,2	2,8
091 0000 699	0,8 - 3,6	2,6	7,8	12,0	1,2	2,8
091 0001 000	2,4 - 5,8	3,3	7,6	13,0	1,1	3,5
091 0001 699	2,4 - 5,8	3,3	7,6	13,0	1,1	3,5
091 0002 000	0,9 - 4,0	3,3	10,3	11,0	2,5	3,5
091 0002 699	0,9 - 4,0	3,3	10,3	11,0	2,5	3,5
091 0003 000	0,9 - 4,0	3,3	10,3	11,0	4,8	3,5
091 0003 699	0,9 - 4,0	3,3	10,3	11,0	4,8	3,5
091 1002 000	1,6 - 3,2	3,8	7,1	9,9	1,5	3,0
091 1003 000	1,6 - 3,2	4,1	7,1	9,9	1,5	3,3
091 1004 000	3,2 - 3,6	4,1	7,1	8,1	1,5	3,3
091 1006 000	1,6 - 3,7	4,6	7,1	10,2	1,5	3,8
091 0004 000	1,5 - 3,5	4,6	9,5	11,0	1,5	4,8
091 0004 599	1,5 - 3,5	4,6	9,5	11,0	1,5	4,8
091 0006 000	0,8 - 4,0	4,6	9,5	11,0	1,5	4,8
091 0006 699	0,8 - 4,0	4,6	9,5	11,0	1,5	4,8
091 0007 699	3,0 - 6,0	4,7	14,0	15,0	2,2	4,8
091 0010 000	0,5 - 3,0	5,0	14,0	15,0	3,0	5,2
091 0010 699	0,5 - 3,0	5,0	14,0	15,0	3,0	5,2
091 1005 000	7,4 - 7,6	5,0	7,1	13,5	1,5	3,7
091 1008 000	4,2 - 4,7	5,2	9,4	13,2	1,5	4,6
091 0012 000	6,5 - 8,0	5,5	15,0	18,0	3,0	6,0
091 0012 699	6,5 - 8,0	5,5	15,0	18,0	3,0	6,0
091 1007 000	1,6 - 3,2	5,7	9,4	10,7	1,5	4,6
091 1009 000	1,6 - 3,2	5,7	9,4	11,4	1,5	5,4
091 0013 699	0,8 - 5,0	6,1	12,7	14,3	1,4	6,4
091 0011 000	3,0 - 7,0	6,2	14,0	19,0	2,5	6,5
091 0011 699	3,0 - 7,0	6,2	14,0	19,0	2,5	6,5
091 1012 000	9,1 - 9,7	6,2	15,5	20,6	1,7	6,4
091 1010 000	3,2 - 4,7	6,3	9,4	13,7	1,5	5,4
091 0013 000	0,8 - 5,0	6,4	12,7	14,5	1,7	6,6
091 0015 000	2,0 - 5,5	7,0	14,3	17,0	2,0	7,2
091 0015 699	2,0 - 5,5	7,0	14,3	17,0	2,0	7,2
091 1011 000	3,2 - 4,7	7,4	12,3	14,6	1,5	6,4
091 0016 000	3,0 - 9,0	9,2	20,0	24,0	2,6	9,4
091 0016 599	3,0 - 9,0	9,2	20,0	24,0	2,6	9,4
091 1013 000	1,6 - 8,6	9,5	17,3	22,9	1,8	8,4

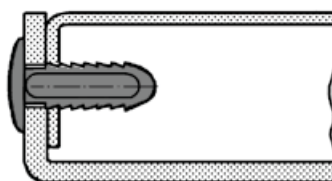
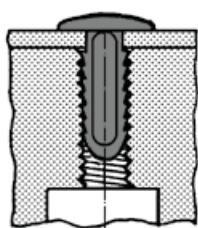
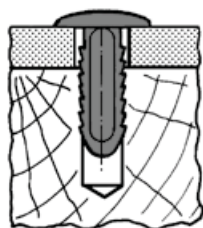
092 Treibstift, gerippt



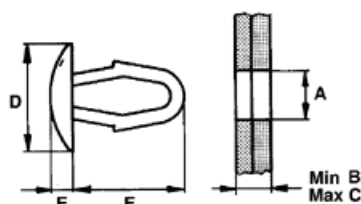
Zur Befestigung an Holz, Stahlplatten, Karton etc. Mit dem Daumen montierbar. Aufgrund der Zähne auch in Gewinde zu befestigen.

Material: Polyamid-6.6
Farben: natur oder schwarz

Article	A	B	C	D	E
	mm	mm	mm	mm	mm
092 0001	14,0	15,0	2,0	3,0 - 11,0	5,8
092 0002	16,0	19,0	2,0	3,0 - 15,0	5,8
092 0004	18,0	23,0	2,0	3,0 - 19,0	7,0



137 Treibstifte aus POM

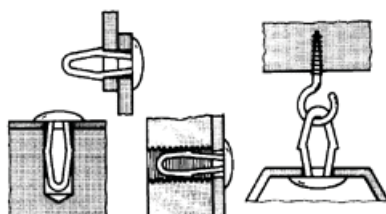
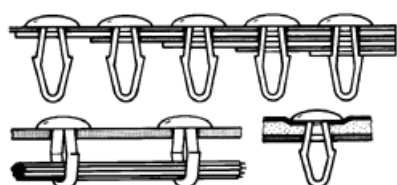


Einzigartig: Ein Treibstift für mehrere Plattendicken. Einfach mit der Hand superschnell zu montieren. Aus einem Kunststoff mit bleibender Elastizität.

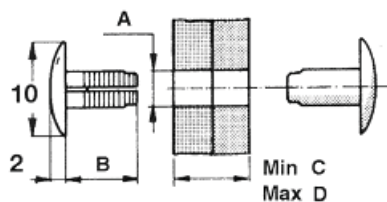
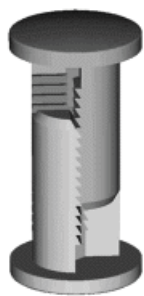
Material: POM
Farben: weiß oder schwarz

Auch in jeder anderen Farbe schnell lieferbar ab 10.000 Stück

Article	A	B - C	D	E	F
	mm	mm	mm	mm	mm
137 0010	3,2 - 3,3	1,0 - 4,5	8,0	1,5	13,0
137 0020	3,9 - 4,0	1,0 - 5,0	9,0	1,6	14,0
137 0030	4,7 - 4,8	1,0 - 5,5	10,0	1,7	15,0
137 0031	4,7 - 4,8	1,0 - 5,5	11,0	3,0	15,0
137 0040	6,4 - 6,5	1,5 - 6,5	12,0	2,0	17,0
137 0050	7,8 - 8,0	1,5 - 7,0	14,0	2,4	19,0
137 0060	5,5	6,0 - 9,0	12,0	2,0	18,0



096 Snip & Snap Niete



Schnelle Montage ohne Werkzeug möglich. Gut geeignet zum Verbinden von Platten, Blechen usw.

Material: Polyamid 6
Farben: natur, grau, schwarz, gelb, blau oder rot

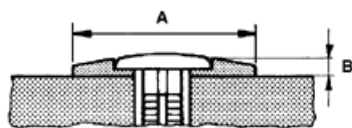
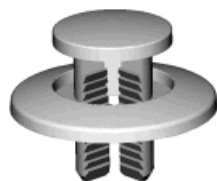
Pro Verbindung werden zwei Teile benötigt! Bei dünnen Klemmbreiten (ab 0,9 mm) muß ein Snapring verwendet werden.

Zusatzinformation: Maß A 5,5 mm = Kopf mit Schlitzausführung.

Auch in jeder anderen Farbe schnell lieferbar ab 10.000 Stück

Article	A	B	C - D	Article	A	B	C - D
	mm	mm	mm		mm	mm	mm
096 0655	5,5	5,4	5,7 - 7,3	096 0610	7,0 - 7,2	5,4	5,7 - 7,3
096 0955	5,5	8,5	8,9 - 12,9	096 0910	7,0 - 7,2	8,5	8,9 - 12,9
096 1355	5,5	12,4	12,8 - 20,5	096 1310	7,0 - 7,2	12,4	12,8 - 20,5
096 2055	5,5	19,8	20,2 - 34,4	096 2010	7,0 - 7,2	19,8	20,2 - 34,4

096 Scheibe für Snip & Snap Niete



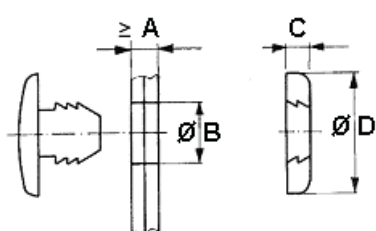
Für eine größere Tragfläche der Schnappnieten. Verschiedene Farbkombinationen möglich. Auch für Drehpunkte geeignet.

Material: Polyamid 6
Farben: natur, grau, schwarz, gelb, blau oder rot

Auch in jeder anderen Farbe schnell lieferbar ab 10.000 Stück

Article	A	B
	mm	mm
096 0018	18,2	2,1

096 Snapring



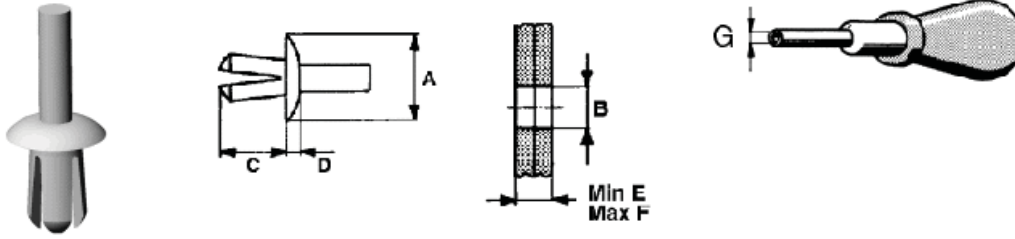
Speziell für Verbindungen ab 0,9 mm Stärke. Klicken statt schrauben. Für alle Längen von Snip and Snap Niete für Bohrungsgröße 5,5 mm.

Material: Polyamid 6
Farben: natur, grau, schwarz, gelb, blau oder rot

Auch in jeder anderen Farbe schnell lieferbar ab 10.000 Stück

Article	A	B	C	D
	mm	mm	mm	mm
096 0010	0,9	5,5	2,0	10,0

093 Spreizniete



Für eine schnelle Nietverbindung mit Blindmontage. Bei größeren Mengen empfehlen wir die Verwendung eines Spreiznietwerkzeuges, Typ 112.

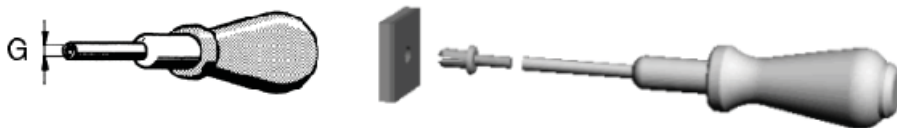
Werkstoff: Polyamid 6.6, * = POM

Farbe: natur 000, schwarz 599 oder 699

Weitere Ausführungen und Abmessungen auf Anfrage

Article	A	B	C	D	E - F	G	Article	A	B	C	D	E - F	G
	mm	mm	mm	mm	mm	mm		mm	mm	mm	mm	mm	mm
093 0000 000*	4,8	3,0	6,2	1,3	0,8-4,5	3,0	093 0140 000	8,5	5,0	9,2	1,8	1,5-7,0	4,0
093 0000 699*	4,8	3,0	6,2	1,3	0,8-4,5	3,0	093 0140 599	8,5	5,0	9,2	1,8	1,5-7,0	4,0
093 0001 000	4,8	3,3	5,0	1,3	0,5-3,5	3,0	093 0010 000	8,7	4,8	8,0	2,0	1,6-4,7	4,0
093 0001 699	4,8	3,3	5,0	1,3	0,5-3,5	3,0	093 0010 699	8,7	4,8	8,0	2,0	1,6-4,7	4,0
093 0110 000	5,0	3,0	5,7	1,3	1,0-4,0	3,0	093 0011 000	9,0	5,5	16,0	2,0	5,0-11,0	4,0
093 0110 599	5,0	3,0	5,7	1,3	1,0-4,0	3,0	093 0011 699	9,0	5,5	16,0	2,0	5,0-11,0	4,0
093 0022 000	6,0	4,1	7,0	1,5	0,6-4,5	3,0	093 0014 000	10,0	5,0	12,0	2,0	3,0-7,0	4,0
093 0022 699	6,0	4,1	7,0	1,5	0,6-4,5	3,0	093 0014 699	10,0	5,0	12,0	2,0	3,0-7,0	4,0
093 0120 000	6,0	3,5	6,8	1,3	1,0-5,0	3,0	093 0150 000	10,0	6,0	10,5	2,2	2,0-8,0	4,0
093 0120 599	6,0	3,5	6,8	1,3	1,0-5,0	3,0	093 0150 599	10,0	6,0	10,5	2,2	2,0-8,0	4,0
093 0023 000	6,0	4,4	5,0	1,7	1,0-3,5	3,5	093 0024 699	11,0	6,0	10,0	2,0	3,0-7,0	4,0
093 0023 699	6,0	4,4	5,0	1,7	1,0-3,5	3,5	093 0026 000	11,0	6,4-7,0	12,3	2,0	5,5-9,5	
093 0004 000	6,5	4,0	8,0	1,5	4,0-6,5	3,0	093 0009 699	12,0	4,9	15,0	2,0	8,0-11,0	4,0
093 0004 699	6,5	4,0	8,0	1,5	4,0-6,5	3,0	093 0160 000	12,0	7,0	11,8	2,6	2,5-9,0	
093 0130 000	6,5	4,0	7,9	1,5	1,5-6,0	3,0	093 0160 599	12,0	7,0	11,8	2,6	2,5-9,0	
093 0130 599	6,5	4,0	7,9	1,5	1,5-6,0	3,0	093 0170 000	13,5	8,0	13,0	3,0	3,0-10,0	
093 0008 000	7,1	4,8	11,0	1,2	4,0-8,7	4,0	093 0170 599	13,5	8,0	13,0	3,0	3,0-10,0	
093 0008 699	7,1	4,8	11,0	1,2	4,0-8,7	4,0	093 0012 000	16,0	5,5	11,0	2,0	2,5-7,0	4,0
093 0007 000	7,2	4,8	7,5	1,9	1,5-5,0	4,0	093 0012 699	16,0	5,5	11,0	2,0	2,5-7,0	4,0
093 0007 699	7,2	4,8	7,5	1,9	1,5-5,0	4,0	093 0021 000	16,0	7,9	12,0	2,0	4,0-7,0	4,0
093 0005 000	7,5	4,0	8,0	1,5	4,0-6,5	3,0	093 0021 699	16,0	7,9	12,0	2,0	4,0-7,0	4,0
093 0005 699	7,5	4,0	8,0	1,5	4,0-6,5	3,0	093 0013 699	16,0	6,0	14,5	2,5	7,5-8,6	
093 0002 000	8,0	3,6	7,0	2,0	2,0-5,5	3,0	093 0018 699	18,0	7,1	18,0	2,5	4,0-8,0	4,0
093 0002 699	8,0	3,6	7,0	2,0	2,0-5,5	3,0	093 0019 699	18,0	8,0	10,0	2,5	4,5-6,0	4,0

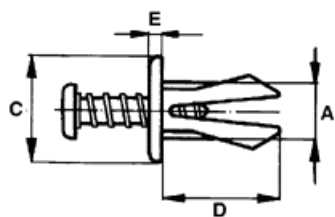
112 Spreiznietwerkzeug



Praktisches Werkzeug zum Anbringen von Spreiznieten, Typ 093. Der Stift dieses Spreiznietes wird mit diesem Gerät sehr zuverlässig und gut montiert. Dies beschleunigt die Montage und vermeidet Produktausfall.

Article	G
	mm
112 0003	3,0
112 0004	4,0

113 Schraubniete



Für eine schnelle, starke Verbindung. Montage wie bei Spreizniete, kann jedoch für Wartungszwecke wie eine Schraube entfernt und wieder verwendet werden. Variable Nietdicke dämpft Schwingungen.

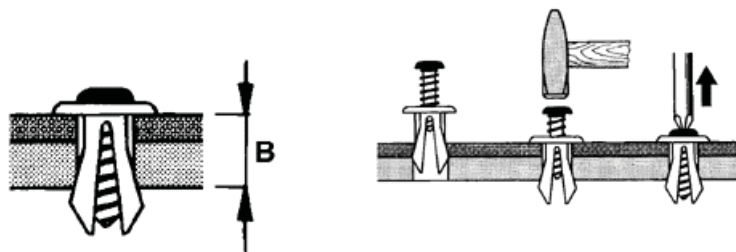
Material: Polyamid-66

Farben: ohne Endnummer schwarz, 000 = natur

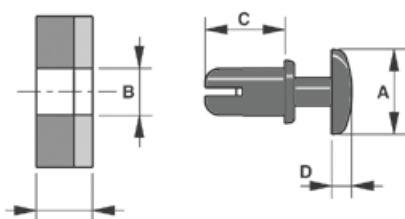
Weitere Farben auf Anfrage! Mindestmenge 10.000 Stück

Article	A	B	C	D	E
	mm	mm	mm	mm	mm
113 0001	5,0	3,75 - 6,0	12,0	11,0	1,5
113 0002	6,0	4,0 - 6,0	16,0	11,0	1,5
113 0003	8,0	3,0 - 10,0	20,0	14,0	1,3
113 1050	5,0	2,0 - 7,0	12,5	9,6	1,2
113 1050 000	5,0	2,0 - 7,0	12,5	9,6	1,2
113 1060	6,0	2,0 - 8,0	15,0	10,7	1,3

Article	A	B	C	D	E
	mm	mm	mm	mm	mm
113 1060 000	6,0	2,0 - 8,0	15,0	10,7	1,3
113 1070	7,0	3,0 - 9,0	17,5	12,1	1,4
113 1070 000	7,0	3,0 - 9,0	17,5	12,1	1,4
113 1080	8,0	3,0 - 10,0	20,0	13,5	1,5
113 1080 000	8,0	3,0 - 10,0	20,0	13,5	1,5



193 Schnappniete



Diese Schnappnieten sitzen mit einem Handgriff in der richtigen Position. Kein Werkzeug notwendig! Kann mittels Daumendruck montiert werden.

Material: Polyamid 6

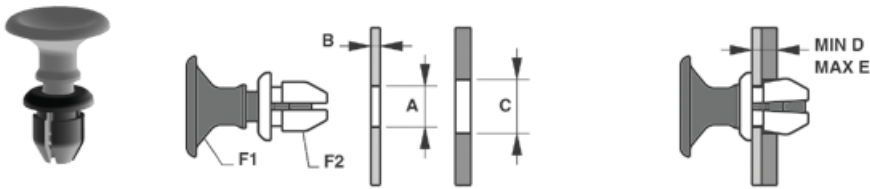
Farbe: schwarz oder weiß (ähnlich RAL 9003)

Weitere Farben ab 10.000 Stück auf Anfrage!

Article	A	B	C	D	Plattenstärke / Bandbreite
	mm	mm	mm	mm	mm
193 0004	6,4	3,1	3,5	1,6	1,0 - 2,0
193 0005	6,4	3,1	4,5	1,6	2,0 - 3,0
193 0006	6,4	3,1	5,5	1,6	3,0 - 4,0
193 0061	6,4	3,6	3,5	1,6	1,2 - 2,1
193 0009	6,4	3,6	4,5	1,6	2,2 - 3,1
193 0091	6,4	3,6	5,0	1,6	2,7 - 3,6
193 0010	6,4	3,6	5,5	1,6	3,2 - 4,1
193 0110	6,4	3,6	6,0	1,6	3,7 - 4,6
193 0011	6,4	3,6	7,0	1,6	4,7 - 5,6
193 0012	8,0	4,1	5,0	1,8	2,5 - 3,5
193 0013	8,0	4,1	6,0	1,8	3,5 - 4,5

Article	A	B	C	D	Plattenstärke / Bandbreite
	mm	mm	mm	mm	mm
193 0014	8,0	4,1	7,0	1,8	4,5 - 5,5
193 0015	8,0	4,1	8,0	1,8	5,5 - 6,5
193 0016	8,0	4,1	10,0	2,2	7,5 - 8,5
193 0017	9,0	5,1	4,5	2,2	1,5 - 2,5
193 0018	9,0	5,1	5,5	2,2	2,5 - 3,5
193 0019	9,0	5,1	6,5	2,2	3,5 - 4,5
193 0020	9,0	5,1	7,5	2,2	4,5 - 5,5
193 0021	9,0	5,1	8,5	2,2	5,5 - 6,5
193 0022	12,0	6,1	8,0	3,0	4,0 - 5,5
193 0025	12,0	6,1	6,0	2,5	2,5 - 4,0

095 Schnellbefestiger

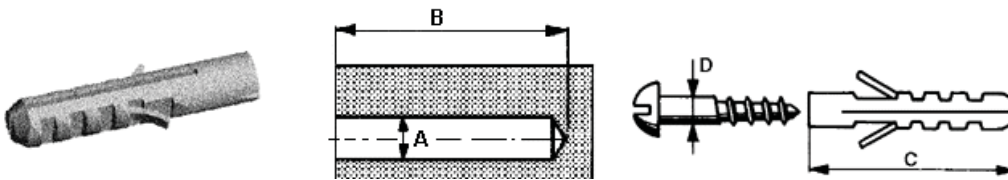


Für eine schnelle Montage von Platten und Panels, welche demontierbar bleiben müssen. Montage durch Eindrücken des Treibstiftes (F1) in den Zapfen (F2). Demontage durch Ziehen des Treibstiftes (F1) aus dem Zapfen (F2). Lebensdauer: >30.000 x.

Material: Polyamid 6
Farbe: schwarz oder weiß (ähnlich RAL 9003)

Article	A	B	C	D	E	F
	mm	mm	mm	mm	mm	
095 0010	7,6	1,5	8,0	1,9	4,2	F1
095 0020	7,6	1,5	8,0	1,9	4,2	F2
095 0030	7,6	2,5	8,0	3,0	5,2	F1
095 0040	7,6	2,5	8,0	3,0	5,2	F2

108 Dübel

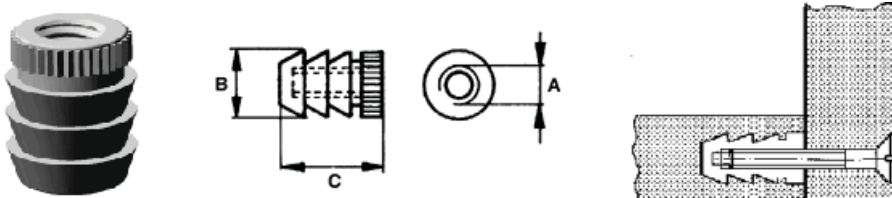


Zentrische Schraubenführung im Innenkörper. Sehr stark beanspruchbar.

Material: Polyamid-6
Farbe: grau

Article	A	B	C	D
	mm	mm	mm	mm
108 0004	4,0	25,0	20,0	2,0 - 3,0
108 0005	5,0	32,0	25,0	2,5 - 4,0
108 0006	6,0	40,0	30,0	3,5 - 4,0
108 0008	8,0	55,0	40,0	4,5 - 6,0
108 0010	10,0	70,0	50,0	6,0 - 8,0
108 0012	12,0	80,0	60,0	8,0 - 10,0
108 0014	14,0	95,0	75,0	10,0 - 12,0

074 Einschlagmuffen



Material: Polyamid
Farbe: natur

Article	A	B	C
		mm	mm
074 0510	M5	9,0	10,0
074 0511	M5	8,6	11,0
074 0513	M5	8,5	13,0
074 0609	M6	11,0	9,0
074 0611	M6	8,6	11,0
074 0613	M6	11,0	13,0

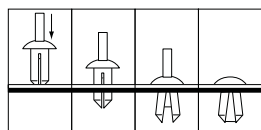
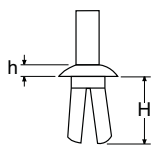
Push Rivets

SR 1963

Natural or Black Nylon



- Fast, economical, permanent
- Rivet expands for secure tight fit
- Good electrical insulation
- Vibration, abrasion and corrosion resistant
- Installation tool available for faster fixing



Press post and shaft expands to lock

Part Number		Nominal Panel Hole Size (mm)	Dimensions (mm)				Std Pack Qty
Natural	Black		Panel Thickness	H	h	Head Diameter	
093011000002	• 093011059902	3.0	1.0 - 4.0	5.7	1.3	5.0	250
093012000002	• 093012059902	3.5	1.0 - 5.0	6.8	1.3	6.0	250
093000200002	• 093000269902	3.6	2.0 - 5.5	7.0	2.0	7.7	250
093013000002	• 093013059902	4.0	1.5 - 6.0	7.9	1.5	6.5	250
-	• 093000469902	4.0	4.0 - 6.5	8.0	1.5	6.5	250
093002300002	-	4.4	1.0 - 3.5	5.0	1.7	6.0	250
093001000002	• 093001069902	4.8	1.6 - 4.7	7.4	2.5	8.7	250
093000800002	• 093000869902	4.8	4.0 - 8.7	11.0	1.2	7.1	250
093000700002	• 093000769902	5.0	1.5 - 5.0	7.4	2.0	7.1	250
093014000002	• 093014059902	5.0	1.5 - 7.0	9.2	1.8	8.5	250
-	• 093001469902	5.0	3.0 - 7.0	11.0	2.0	9.7	250
093015000002	• 093015059902	6.0	2.0 - 8.0	10.5	2.2	10.0	250
093002400002	• 093002469902	6.0	3.0 - 7.0	10.0	2.0	11.0	250
093002600002	• 093002669902	6.4	4.0 - 9.5	12.0	2.0	11.0	250
093016000002	• 093016059902	7.0	2.5 - 9.0	11.8	2.6	12.0	250
093001800002	• 093001869902	7.1	4.0 - 12.0	17.5	2.5	17.0	250
093017000002	• 093017059902	8.0	3.0 - 10.0	13.0	3.0	13.5	250

Rivet Hand Tool for Push Rivets

SR 1919



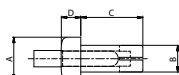
- For use with Push Rivet: SR 1963
- Ensures secure rivet fastening
- Simply position rivet gun over stem of the rivet and push down

Part Number	Std Pack Qty	Corresponding Push Rivet Part Number	
		Natural	Black
112011099999	1	093011000002	093011059902
112012099999	1	093012000002	093012059902
112013099999	1	093013000002	093013059902
112000899999	1	093000800002	093000869902
112014099999	1	093014000002	093014059902
112015099999	1	093015000002	093015059902
112002499999	1	093002400002	093002469902
112016099999	1	093016000002	093016059902
112001899999	1	093001800002	093001869902
112017099999	1	093017000002	093017059902

Drive Rivets

SR 1920

Nylon 6 and POM



- Supplied in Black, White or Natural
- Provides solid connection by means of blind side fixing

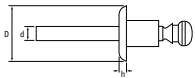
Natural	Part Number		Panel Thickness	Dimensions (mm)				Std Pack Qty
	White	Black		A	B	C	D	
-	172315511302	172315569902	3.0 - 4.0	5.8	3.1	5.5	1.6	250
-	172414511302	172414569902	2.0 - 3.0	8.0	4.1	4.5	3.0	250
-	172485011302	172485069902	1.2 - 3.0	9.8	4.8	5.0	3.6	250
-	172515011302	172515069902	2.0 - 3.0	9.5	5.1	5.0	2.4	250
-	172516011302	172516069902	3.0 - 4.0	9.5	5.1	6.0	2.8	250
-	172517011302	172517069902	4.0 - 5.0	9.5	5.1	7.0	2.5	250
-	172518011302	172518069902	5.0 - 6.0	9.5	5.1	8.0	2.8	250
-	172519011302	172519069902	6.0 - 7.0	9.5	5.1	9.0	3.7	250
-	172511211302	172511269902	7.0 - 8.5	8.0	5.1	11.5	3.0	250
172616000002	-	172616069902	2.5 - 4.0	11.0	6.1	6.0	1.6	250

Blind Rivets

SR 1911

Natural Nylon

- Good electrical insulation
- Vibration, abrasion and corrosion resistant



Part Number	Nominal Panel Hole Size (mm)	Dimensions (mm)			Std Pack Qty	
		Panel Thickness	D	h		
2020010000VR	4.1	0.5 - 5.0	9.0	1.2	2.5	1000
2020020000VR	4.1	5.0 - 9.0	9.0	1.2	2.5	1000
2020030000VR	5.1	0.5 - 5.0	11.0	1.2	3.0	1000
2020040000VR	5.1	5.0 - 9.0	11.0	1.5	3.0	1000
2020050000VR	6.1	0.5 - 5.0	13.0	1.5	3.5	1000
2020060000VR	6.1	5.0 - 9.0	13.0	1.5	3.5	1000

Blind Rivet Gun

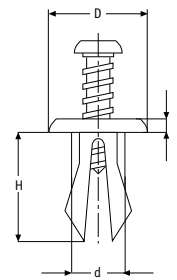
- Suitable for all blind rivets in SR 1911
- Part number 495141



Screw Rivets

SR 1962

Nylon 6.6



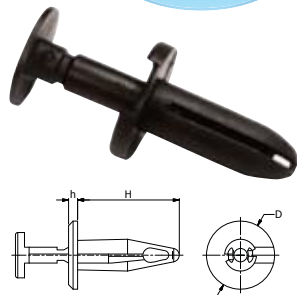
Part Number	Colour	Dimensions (mm)				Panel Thickness Range	Std Pack Qty
		D	d	H	h		
113000169902	Black	12.0	5.0	11.0	1.5	4.0 - 7.0	250
113105000002	Natural	12.5	5.0	9.6	1.2	2.0 - 7.0	250
113105059902	Black	12.5	5.0	9.6	1.2	2.0 - 7.0	250
113106000002	Natural	15.0	6.0	10.7	1.3	2.0 - 8.0	250
113106059902	Black	15.0	6.0	10.7	1.3	2.0 - 8.0	250
113000269902	Black	16.0	6.0	11.0	1.5	4.0 - 7.0	250
113107000002	Natural	17.5	7.0	12.1	1.4	3.0 - 9.0	250
113107059902	Black	17.5	7.0	12.1	1.4	3.0 - 9.0	250
113108000002	Natural	20.0	8.0	13.5	1.5	3.0 - 10.0	250
113108059902	Black	20.0	8.0	13.5	1.5	3.0 - 10.0	250
113000369902	Black	20.0	8.0	14.0	1.5	3.0 - 10.0	250

Push Lock Rivets

SR 1912

Black Nylon 6

- Quick and easy to install
- Closed end feature acts as a self-aligning mechanism
- Double locking construction prevents the pin from disengaging during shipment or assembly



Part Number	Dimensions (mm)					Std Pack Qty
	Hole Size (mm)	Panel Range	D (mm)	h	H	
495201	5.0	1.5 - 4.6	7.2	1.0	11.4	1000
495202	6.3	4.0 - 7.6	18.0	2.5	17.3	1000
495203	6.3	2.5 - 8.9	25.4	2.5	22.5	1000
495204	6.3	2.5 - 8.9	15.0	2.7	18.5	1000
495205	6.3	1.5 - 7.6	17.4	2.0	20.4	1000
495206	6.5	2.5 - 8.9	15.0	2.0	22.4	1000
495207	7.0	12.0 - 15.0	25.4	2.5	27.0	1000
495208	7.0	9.0 - 13.0	18.0	2.5	23.0	1000
495209	8.0	3.0 - 8.0	20.0	2.7	21.0	1000
495210	8.0	3.0 - 8.0	15.0	2.6	22.0	1000
495211	8.0	4.0 - 8.0	18.0	2.9	23.0	1000
495212	8.0	12.0 - 16.0	15.0	3.0	29.0	1000
495213	9.0	3.0 - 7.0	16.0	2.6	20.0	1000
495214	9.5	0.9 - 4.8	25.0	2.4	25.2	1000
495215	9.5	3.5 - 7.0	17.9	2.5	23.0	1000
495216	10.0	6.0 - 10.0	20.0	3.7	26.7	1000
495217	11.5	29.0 - 31.0	30.0	2.5	50.0	1000

Quarter Turn Rivets

SR 1915

Black Pom

- Quick release fastener
- Suitable for security panels and components that need to be replaced quickly

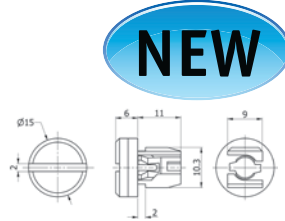


Part Number	Dimensions (mm)					Std Pack Qty
	Hole Size (mm)	Panel Range	D (mm)	h	L	
495234	6.0	3.0 - 5.0	17.9	2.3	16.2	1000
495235	6.0	4.5 - 6.0	14.2	2.0	16.0	1000
495236	6.0	4.5 - 6.0	16.0	2.3	12.1	1000
495237	7.0	2.5 - 5.0	16.0	2.3	14.2	1000
495238	7.5	4.5 - 7.0	19.8	3.1	13.7	1000
495239	8.0	3.5 - 6.0	19.9	2.9	18.3	1000
495240	9.0	4.0 - 7.5	18.7	3.6	25.4	1000
495241	9.0	6.0 - 8.2	15.0	3.8	20.4	1000
495242	7.0 - 9.0	4.5 - 6.5	15.7	3.0	15.5	1000

Quarter Turn Latches

SR 1917

Nylon



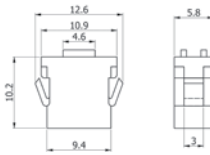
NEW

- Turn the quarter turn fastener to both lock and release the fastener
- Supplied in pre-assembled format for convenience
- Ideal for when it is impossible to fit a receptacle in the frame work
- Available in both black and natural

Part Number		Hole Size (mm)	Panel Thickness	Dimensions (mm)			Std Pack Qty
Black	Natural			Head Diameter	Head Height	Length	
495245	495246	9.0 x 9.1 - 9.3	1.6 - 5.0	15.0	6.0	11.0	1000

Magnetic Latches

SR 1916



NEW

Black Pom/ Magnet

- Snap-in style can be installed quickly in a single mounting hole
- Magnet latches can be used to hold metal panel or steel strikers
- No hardware is visible from the outside
- Low breakaway force

Part Number	Dimensions (mm)				Std Pack Qty
	Hole Size (mm)	Panel Thickness	Head Size	Length	
495243	11.3/9.5 x 6.0	3.5	11.0 x 6.0 x 1.5	10.2	50
495244	12.0/10.0 x 5.0	3.5	12.0 x 5.0 x 1.5	9.0	50

Snap Latches

SR 1993

Plunger: Nylon 6

Grommet: Polycarbonate

- Allow repeated release and fixing for maintenance work to be carried out

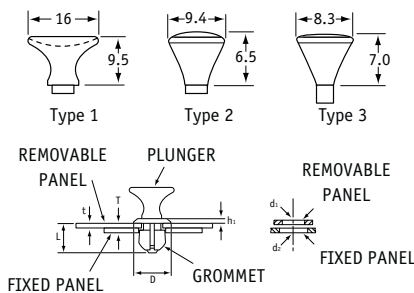
- Snap into panel or hole with easy push action

Plunger

Part Number		Type	Dimensions (mm)		Std Pack Qty	Use Grommet Part Number	
Black	White		Panel Thickness T	Hole Size d1		Black	Natural
462794	462804	1	1.9-4.2	7.6	1000	462800	462810
462795	-	2	1.9-4.2	7.6	1000	462800	462810
462797	462807	1	3.0-5.2	7.6	1000	462801	462811
462798	462808	3	1.9-4.2	6.0	1000	462802	462812
462799	-	3	3.0-5.2	6.0	1000	462803	462813

Grommet

Part Number		Panel Thickness t	Dimensions (mm)				Std Pack Qty
Black	White		Hole size d2	D	h1	L	
462800	462810	1.5	8.0	10.8	2.0	9.8	1000
462801	-	2.5	8.0	10.8	2.0	10.9	1000
462802	462812	1.5	6.4	8.5	1.8	6.8	1000
462803	-	2.5	6.4	8.5	1.8	6.8	1000



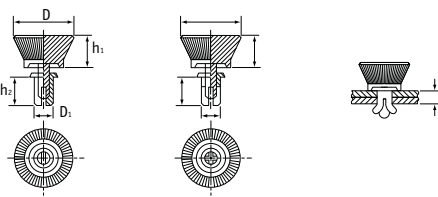
Releasable Rivets

SR 1994

Plunger: Nylon 6

- Easy application and release mechanism
- Ideal for applications requiring regular maintenance

Part Number		Dimensions (mm)					Std Pack Qty
Black	White	D	h1	D1	h2	Panel Thickness (mm)	
462620	462633	10.0	8.0	3.0	3.5	1.0-2.0	1000
-	462634	10.0	8.0	3.0	4.5	2.0-3.0	1000
-	462635	10.0	8.0	3.0	5.5	3.0-4.0	1000
-	462637	10.0	8.0	3.0	8.0	5.5-6.5	1000
462625	-	10.0	8.0	3.5	4.5	2.0-3.0	1000
462627	-	10.0	8.0	3.5	7.0	3.8-5.2	1000
462628	462641	12.0	8.0	4.0	5.0	2.5-3.5	1000
462629	-	12.0	8.0	4.0	6.0	3.5-4.5	1000
-	462644	12.0	8.0	4.0	8.0	5.5-6.5	1000
462632	462645	12.0	8.0	4.0	10.0	7.5-8.5	1000

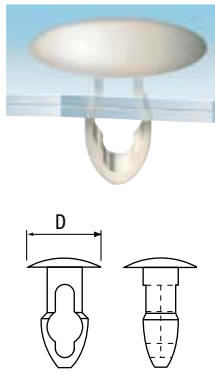


Keyhole Clips

SR 1970

Natural Nylon 6.6

- Easy finger-pressure assembly
- Good electrical insulation
- Vibration, abrasion and corrosion resistant



Part Number	Dimensions (mm)			Std Pack Qty
	Hole Diameter (mm)	Maximum Panel Thickness	D	
460402	3.18	2.36	6.35	1000
460403	3.18	3.18	6.35	1000
460404	3.18	3.96	6.35	1000
460405	3.18	4.78	6.35	1000
460406	3.18	5.56	6.35	1000
460407	3.18	6.35	6.35	1000
460408	3.96	2.36	7.94	1000
460409	3.96	3.18	7.94	1000
460410	3.96	3.96	7.94	1000
460411	3.96	4.75	7.94	1000
460412	3.96	5.54	7.94	1000
460413	3.96	6.35	7.94	1000
460414	3.96	7.14	7.94	1000
460416	3.96	8.71	7.94	1000
460417	3.96	9.53	7.94	1000
460418	5.56	2.36	8.73	1000
460419	5.56	3.18	8.73	1000
460420	5.56	3.96	8.73	1000
460421	5.56	4.78	8.73	1000
460422	5.56	5.56	8.73	1000
460423	5.56	6.35	8.73	1000
460424	5.56	7.14	8.73	1000
460425	5.56	7.92	8.73	1000
460426	6.35	2.36	12.70	1000
460427	6.35	3.18	12.70	1000
460428	6.35	3.96	12.70	1000
460429	6.35	4.75	12.70	1000
460430	6.35	5.56	12.70	1000
460431	6.35	6.35	12.70	1000
460432	6.35	7.14	12.70	1000
460433	6.35	7.92	12.70	1000
460434	6.35	8.71	12.70	1000
460435	6.35	9.53	12.70	1000

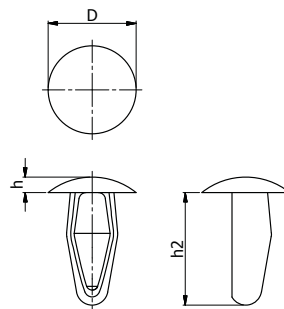
Mounting Buttons

SR 1964

Nylon 6.6

- Ideal to fasten thin gauge material, or mount lightweight components
- Suitable for front panel mounting
- Now available in black

EXTENDED RANGE



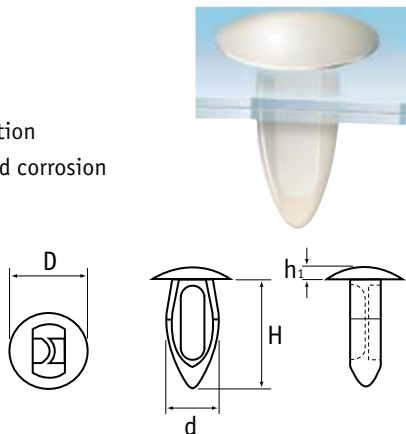
Part Number	Hole Size (mm)	Panel Thickness	Dimensions (mm)			Std Pack Qty	
			D	h2	h		
Natural	Black						
091000000002	091000059902	2.8	0.8 - 3.6	7.8	12.0	1.2	500
091000100002	091000159902	3.5	2.4 - 5.8	7.6	13.0	1.1	500
091000200002	091000259902	3.5	0.9 - 4.0	10.3	11.0	2.5	500
091000300002	091000359902	3.5	0.9 - 4.0	10.3	11.0	4.8	500
091000600002	091000659902	4.8	0.8 - 4.0	9.5	11.0	1.5	500
091000400002	091000459902	5.0	1.5 - 3.5	9.5	11.0	1.6	500
091000700002	091000769902	5.0	3.0 - 6.0	13.8	14.4	2.2	250
091001000002	091001069902	5.0	0.5 - 3.0	13.5	14.4	2.6	250
091001200002	091001259902	5.8	6.0 - 8.5	15.0	18.0	3.0	250
091001100002	091001159902	6.5	3.0 - 7.0	14.0	19.0	2.5	250
091001300002	091001359902	6.6	0.8 - 5.0	12.7	14.5	1.7	250
091001500002	091001559902	7.2	2.0 - 5.5	14.3	17.0	2.0	250
091001650002	091001659902	9.4	3.0 - 9.0	20.0	24.0	2.6	250

Arrow Clips

SR 1969

Natural Nylon 6.6 or POM

- Good electrical insulation
- Vibration, abrasion and corrosion resistant



Part Number	Panel Hole Dia (mm)	Panel Thickness (mm)	Dimensions (mm)				Std Pack Qty
			D	h1	H	d	
460387	2.16-2.29	0.81-2.72	3.18	0.76	4.75	2.72	1000
460388	3.00-3.10	1.57-3.18	7.11	1.52	9.91	3.71	1000
460389	3.02-3.43	1.58-3.18	6.86	1.01	8.38	3.56	1000
*137000800005	3.5	1.0-4.5	8.0	1.5	13.0	3.2	500
460390	3.84-4.09	1.57-3.18	7.11	1.02	9.91	4.98	1000
460391	3.84-4.09	1.57-3.68	7.11	2.03	10.16	4.57	1000
*137002000005	4.0	1.0-5.0	9.0	1.6	14.0	3.9	500
460392	4.06-4.19	0.81-3.18	7.11	2.03	10.16	4.72	1000
460393	4.62-4.88	1.57-3.18	9.14	1.52	10.16	5.72	1000
460394	4.62-4.88	4.19-4.70	9.53	1.52	13.33	5.23	1000
*137003000005	5.0	1.0-5.5	10.0	1.7	15.0	4.7	500
*137006000005	6.0	6.0-9.0	12.0	2.0	18.0	5.5	500
460400	8.38-8.64	3.18-8.88	17.45	0.75	22.74	9.4	1000
460401	8.51-8.76	1.57-3.56	22.0	1.27	11.43	9.22	1000

* Made from POM

Barbed Push Fasteners

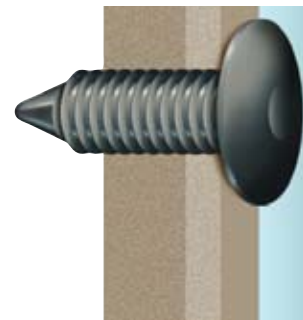
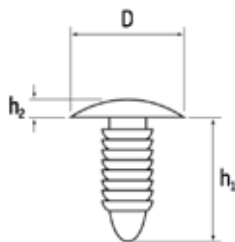
SR 1965

Nylon 6.6 and Polypropylene

- Ideal for threaded, non-threaded, drilled or punched holes
- Some sizes now available in high clarity polypropylene



EXTENDED RANGE



Black	Natural	Clear	Hole Diameter (mm)	Maximum Panel Thickness (mm)	D (mm)	h1 (mm)	h2 (mm)	Std Pack Qty
167201569902	167201500002	-	2.7 - 3.3	1.5 - 8.0	6.0	11.0	0.9	100
167202069902	167202000002	-	2.7 - 3.3	1.5 - 15.0	6.0	18.0	0.9	100
468809	468833	-	3.0 - 3.2	4.0-16.5	5.5	18.5	1.0	1000
468811	468835	-	3.5	0.7-5.0	9.1	9.5	1.5	1000
167204566902	167204500002	-	4.1 - 5.2	1.5 - 5.5	12.0	10.0	1.2	100
460436	-	-	4.8	0.6-9.23	9.5	12.7	1.8	1000
460437	-	-	4.8	0.8-8.4	11.1	14.3	1.7	1000
468813	468837	● 495222	4.8	0.7-13.0	11.0	17.3	1.7	1000
463609	-	-	4.9	2.4-7.4	11.2	12.5	1.1	100
468814	468838	-	5	1.2-6.0	16.0	11	2.0	1000
468815	468839	-	5	1.7-8.0	11.0	12.7	1.0	1000
167206569902	167206500002	-	5.6 - 6.4	1.5 - 15.0	13.0	20.0	1.5	100
167207069902	167207000002	-	5.6 - 6.4	1.0 - 27.0	13.0	32.0	1.5	100
167209069902	167209000002	-	5.9 - 7.2	2.0 - 19.0	14.0	24.0	1.2	100
468816	468840	-	6	2.0-8.0	15.5	12.7	1.0	1000
468817	468841	-	6	2.5-8.0	16.0	15	2.0	1000
468819	468843	-	6	3.5-19.0	12.7	24	1.5	1000
468820	468844	● 495223	6.0-6.3	2.3-8.9	17.8	15.5	2.4	1000
468821	468845	● 495221	6.0-6.3	2.5-12.0	17.8	20.4	2.5	1000
460439	-	-	6.35	2.7-7.6	17.8	11.1	2.5	1000
460440	-	-	6.35	3.8-13.5	17.8	18.9	2.7	1000
468824	468848	● 495225	6.4	2.7-7.3	19.1	15.9	0.8	1000
-	-	● 495224	6.4	10.7-28.8	17.8	35.1	2.5	1000
468826	468850	● 495227	7	2.0-25.0	30.0	34.8	2.2	1000
-	-	● 495226	7	0.7-20.0	18.0	27.3	2.0	1000
468828	468852	-	7.0-7.2	2.4-11.9	15.9	18.9	1.0	1000
460441	-	-	7.1	2.4-12.7	15.9	22.6	2.8	1000
● 495230	● 468832	-	7.2	1.5 - 14.0	19.0	21.2	2.4	1000
● 495231	● 495233	-	7.2	1.5 - 25.4	19.0	30.5	2.0	1000
468799	-	-	7.5	2.7-17.0	19.0	21	2.0	1000
468829	468853	-	8	3.3-12.7	12.7	16.8	1.5	1000
468830	-	-	8.7	1.4-13.0	16.0	19.1	2.3	1000
468831	468855	-	10	1.5-20.0	21.8	28.2	3.5	1000

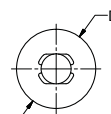
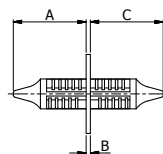
Double Ended Barb Push Fasteners

SR 1913

Black Nylon 6.6

- Allows 2 panels to be connected from the centre so that no fastener head is visible.
- Presses neatly into position

NEW

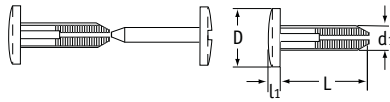


Part Number	Hole Size (mm)	Panel Range (mm)	Head Diameter D (mm)	Head Height B (mm)	Length A&C (mm)	Std Pack Qty
495218	4.0	2.6 - 6.3	7.5	1.8	7.8	1000
495219	7.5	3.0 - 8.0	19.0	1.0	17.5	1000
495220	8.0	A=3.2-9.5, C=3.6-19.0	12.7	1.1	A=11.6 C=21.8	1000

Assembly Clips

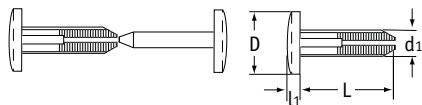
SR 1990

Natural Nylon 6.6



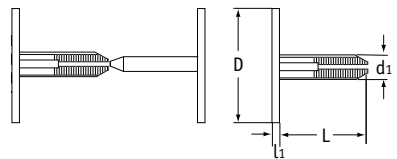
12mm Head with slot

Part Number		Dimensions (mm)							Std Pack Qty
Black	White	Hole Diameter	Panel Thickness	d ₁	D	l ₁	L		
8100670001VR	8100670008VR	5 - 8	5.3 - 7.5	5.0	12.0	3.0	5.5	1000	
8100680001VR	8100680008VR	5 - 8	9.0 - 13.0	5.0	12.0	3.0	9.0	1000	
8100690001VR	8100690008VR	5 - 8	13.0 - 20.0	5.0	12.0	3.0	13.0	1000	
8100660001VR	8100660008VR	5 - 8	18.0 - 28.0	5.0	12.0	3.0	18.0	1000	
8100700001VR	8100700008VR	5 - 8	20.0 - 34.0	5.0	12.0	3.0	20.0	1000	
8100710001VR	8100710008VR	7 - 8	13.0 - 20.0	7.0	12.0	3.0	13.0	1000	



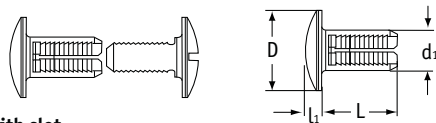
12mm Head without slot

Part Number		Dimensions (mm)							Std Pack Qty
Black	White	Hole Diameter	Panel Thickness	d ₁	D	l ₁	L		
8110670001VR	8110670008VR	5 - 8	5.3 - 7.5	5.0	12.0	4.0	5.5	1000	
8110680001VR	8110680008VR	5 - 8	9.0 - 13.0	5.0	12.0	4.0	9.0	1000	
8110690001VR	8110690008VR	5 - 8	13.0 - 20.0	5.0	12.0	4.0	13.0	1000	
8110660001VR	8110660008VR	5 - 8	18.0 - 28.0	5.0	12.0	4.0	18.0	1000	
8110700001VR	8110700008VR	5 - 8	20.0 - 34.0	5.0	12.0	4.0	20.0	1000	
8110710001VR	8110710008VR	7 - 8	13.0 - 20.0	7.0	12.0	4.0	13.0	1000	



19mm Head without slot

Part Number		Dimensions (mm)							Std Pack Qty
Black	White	Hole Diameter	Panel Thickness	d ₁	D	l ₁	L		
8130670001VR	8130670008VR	5 - 8	5.3 - 7.5	5.0	19.0	3.0	5.5	1000	
8130680001VR	8130680008VR	5 - 8	9.0 - 13.0	5.0	19.0	3.0	9.0	1000	
8130690001VR	8130690008VR	5 - 8	13.0 - 20.0	5.0	19.0	3.0	13.0	1000	
8130660001VR	8130660008VR	5 - 8	18.0 - 28.0	5.0	19.0	3.0	18.0	1000	
8130700001VR	8130700008VR	5 - 8	20.0 - 34.0	5.0	19.0	3.0	20.0	1000	
8130710001VR	8130710008VR	7 - 8	13.0 - 20.0	7.0	19.0	3.0	13.0	1000	



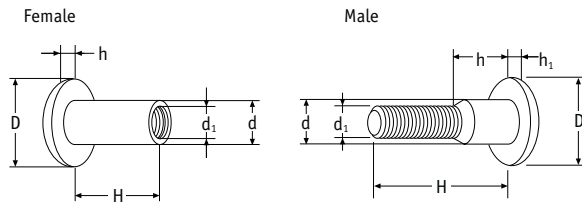
20mm Rounded Head with slot

Part Number		Dimensions (mm)							Std Pack Qty
Black	White	Hole Diameter	Panel Thickness	d ₁	D	l ₁	L		
8170820101VR	8170820108VR	10 - 15	8.7 - 11.5	9.7	20.0	3.5	8.5	1000	
8170840101VR	8170840108VR	10 - 15	18.0 - 25.0	9.7	20.0	3.5	16.0	1000	

Book Screws

SR 1999

Natural Nylon



Female

Part Number	Colour	Dimensions (mm)					Std Pack Qty
		d1	D	H	d	h	
081041011301	White	M4	12.0	10.0	6.0	2.2	250
081041011401	Black	M4	12.0	10.0	6.0	2.2	250
081041511301	White	M4	12.0	15.0	6.0	2.2	250
081041511401	Black	M4	12.0	15.0	6.0	2.2	250
081042011301	White	M4	12.0	20.0	6.0	2.2	250
081042011401	Black	M4	12.0	20.0	6.0	2.2	250
081042511301	White	M4	12.0	25.0	6.0	2.2	250
081042511401	Black	M4	12.0	25.0	6.0	2.2	250
081043011301	White	M4	12.0	30.0	6.0	2.2	250
081043011401	Black	M4	12.0	30.0	6.0	2.2	250
081051011301	White	M5	14.0	10.0	7.0	2.5	250
081051011401	Black	M5	14.0	10.0	7.0	2.5	250
081061050001	White	M6	16.0	10.0	8.0	3.0	500
081061059901	Black	M6	16.0	10.0	8.0	3.0	500
081061650001	White	M6	16.0	16.0	8.0	3.0	500
081061659901	Black	M6	16.0	16.0	8.0	3.0	500
081161050001	White	M6	16.0	10.0	8.0	2.5	500
081161059901	Black	M6	16.0	10.0	8.0	2.5	500
081161650001	White	M6	16.0	16.0	8.0	2.5	500
081161659901	Black	M6	16.0	16.0	8.0	2.5	500

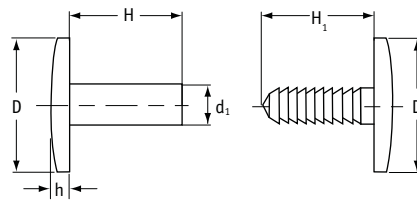
Male

Part Number	Colour	Dimensions (mm)					Std Pack Qty	
		d1	D	H	d	h		h1
082041011301	White	M4	12.0	10.0	6.0	-	2.5	250
082041011401	Black	M4	12.0	10.0	6.0	-	2.5	250
082051011301	White	M5	14.0	10.0	7.0	-	2.5	250
082051011401	Black	M5	14.0	10.0	7.0	-	2.5	250
082051511301	White	M5	14.0	15.0	7.0	5.0	2.5	250
082051511401	Black	M5	14.0	15.0	7.0	5.0	2.5	250
082052011301	White	M5	14.0	20.0	7.0	10.0	2.5	250
082052011401	Black	M5	14.0	20.0	7.0	10.0	2.5	250
082052611301	White	M5	14.0	25.0	7.0	15.0	2.5	250
082052611401	Black	M5	14.0	25.0	7.0	15.0	2.5	250
082053011301	White	M5	14.0	30.0	7.0	20.0	2.5	250
082054011301	White	M5	14.0	40.0	7.0	30.0	2.5	250
082054011401	Black	M5	14.0	40.0	7.0	30.0	2.5	250
082061050001	White	M6	16.0	10.0	8.0	-	3.0	500
082061059901	Black	M6	16.0	10.0	8.0	-	3.0	500
082061850001	White	M6	16.0	18.0	8.0	8.0	3.0	500
082061859901	Black	M6	16.0	18.0	8.0	8.0	3.0	500
082062550001	White	M6	16.0	25.0	8.0	8.0	3.0	500
082062559901	Black	M6	16.0	25.0	8.0	8.0	3.0	500
082063050001	White	M6	16.0	30.0	8.0	8.0	3.0	500
082063059901	Black	M6	16.0	30.0	8.0	8.0	3.0	500
082063650001	White	M6	16.0	36.0	8.0	8.0	3.0	500
082063659901	Black	M6	16.0	36.0	8.0	8.0	3.0	500
082063950001	White	M6	16.0	39.0	8.0	8.0	3.0	250
082063959901	Black	M6	16.0	39.0	8.0	8.0	3.0	250
082064850001	White	M6	16.0	48.0	8.0	8.0	3.0	250
082064859901	Black	M6	16.0	48.0	8.0	8.0	3.0	250

Binder Screws

SR 1999

HDPE



Part Number	Colour	Female Part		Male Part		Head		Std Pack Qty
		d1	H	Size	H1	D	h	
	Black	5.0	5.0	M4	5.0	12.0	2.6	1000
	White	5.0	5.0	M4	5.0	12.0	2.6	1000
	Black	5.0	6.0	M4	5.0	12.0	2.6	1000
	White	5.0	6.0	M4	5.0	12.0	2.6	1000
	Black	5.0	8.0	M4	5.0	12.0	2.6	1000
	White	5.0	8.0	M4	5.0	12.0	2.6	1000
	Black	5.0	10.0	M4	10.0	12.0	2.6	1000
	White	5.0	10.0	M4	10.0	12.0	2.6	1000
	Black	5.0	12.0	M4	10.0	12.0	2.6	1000
	White	5.0	12.0	M4	10.0	12.0	2.6	1000
	Black	5.0	15.0	M4	10.0	12.0	2.6	1000
	White	5.0	15.0	M4	10.0	12.0	2.6	1000
	Black	5.0	20.0	M4	10.0	12.0	2.6	1000
	White	5.0	20.0	M4	10.0	12.0	2.6	1000
	Black	5.0	25.0	M4	10.0	12.0	2.6	1000
	White	5.0	25.0	M4	10.0	12.0	2.6	1000

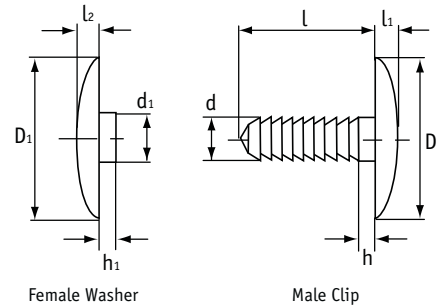
Part Number	Colour	Female Part		Male Part		Head		Std Pack Qty
		d1	H	Size	H1	D	h	
	Black	5.0	30.0	M4	10.0	12.0	2.6	1000
	White	5.0	30.0	M4	10.0	12.0	2.6	1000
	Black	5.0	35.0	M4	10.0	12.0	2.6	1000
	White	5.0	35.0	M4	10.0	12.0	2.6	1000
	Black	5.0	40.0	M4	10.0	12.0	2.6	1000
	White	5.0	40.0	M4	10.0	12.0	2.6	1000
	Black	5.0	50.0	M4	10.0	12.0	2.6	1000
	White	5.0	50.0	M4	10.0	12.0	2.6	1000
	Black	5.0	60.0	M4	10.0	12.0	2.6	1000
	White	5.0	60.0	M4	10.0	12.0	2.6	1000
	Black	5.0	80.0	M4	10.0	12.0	2.6	1000
	White	5.0	80.0	M4	10.0	12.0	2.6	1000
	Black	5.0	90.0	M4	10.0	12.0	2.6	1000
	White	5.0	90.0	M4	10.0	12.0	2.6	1000

Snap Fasteners

SR 1990

White Polyethylene

- Ideal for fixing corrugated panels



30mm Head Diameter

Part Number		Male Clip Dimensions (mm)						Female Washer Dimensions (mm)				Std Pack Qty	
Black	White	Hole Diameter	Panel Thickness	d	l	h	D	l1	h1	d1	D1		l2
8502160901VR	8502160908VR	8 - 20	6 - 10	6	12	-	30	3	6	8	30	3	1000
8502260901VR	8502260908VR	8 - 20	6 - 22	6	26	4	30	3	6	8	30	3	1000
8502440901VR	8502440908VR	8 - 20	20 - 40	6	44	14	30	3	6	8	30	3	1000
8501160901VR	8501160908VR	8 - 20	12 - 18	6	12	-	30	3	12	8	30	3	1000
8501260901VR	8501260908VR	8 - 20	12 - 30	6	26	4	30	3	12	8	30	3	1000
8501440901VR	8501440908VR	8 - 20	12 - 46	6	44	14	30	3	12	8	30	3	1000

15mm Head Diameter

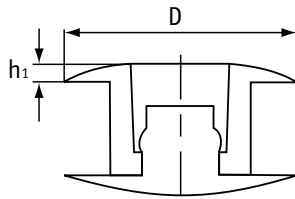
Part Number		Male Clip Dimensions (mm)				Female Washer Dimensions (mm)		Std Pack Qty	
Black	White	Hole Diameter	Panel Thickness	l	D	l1	D1		l2
8501150901VR	8501150908VR	5 - 10	0 - 8	15	15	2	15	3.5	1000
8501220901VR	8501220908VR	5 - 10	0 - 16	22	15	2	15	3.5	1000

NB: One pack contains 1000 each of clips and washers.

Push Clips

SR 1991

White Nylon 6.6



Part Number		Dimensions (mm)				Std Pack Qty
White	Black	Hole Diameter	Maximum Panel Thickness	D	h1	
8201020008VR	8201020001VR	6.0	2.2	10.0	0.8	1000
8201030008VR	8201030001VR	6.0	3.2	10.0	0.8	1000
8201040008VR	8201040001VR	6.0	4.2	10.0	0.8	1000
8201050008VR	8201050001VR	6.0	5.2	10.0	0.8	1000

NB: Pack quantity includes 1000 each of male and female parts.

Viking Screws

SR 1838

Clear Polycarbonate



- Fast and easy push on panel fastener
- Screw to tighten

Part Number	Dimensions (mm)		Std Pack Qty
	Head Diameter	Length	
464972	12.5	12.0	100
464973	12.5	20.0	100
464974	12.5	25.0	100

NB: Pack quantity includes 100 each of nut and screw.