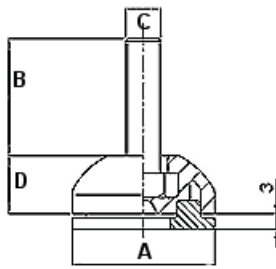


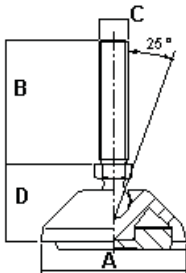
Maschinenfüße



Material: Technopolymer, Gewinde aus behandeltem Stahl
 Farbe: schwarz

Mit Gummi auf Anfrage!

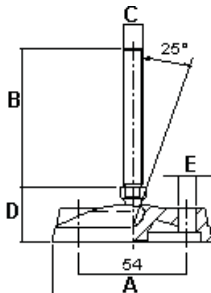
Article	A	B	C	D	Max. Belastbarkeit
	mm	mm		mm	kg
61188 32533	32,0	23,0	M8	13,0	800
61188 32534	32,0	23,0	M10	13,0	800
61188 40533	40,0	33,0	M8	13,0	800
61188 40534	40,0	33,0	M10	13,0	800



Material: Polyamid 6, Gewinde Stahl verzinkt.
 Farbe: schwarz

Tellerdurchmesser 32 und 40 mm sowie mit Gummi auf Anfrage!

Article	A	B	C	D	Article	A	B	C	D
	mm	mm		mm		mm	mm		mm
61189 05856	50,0	45,0	M8	27,0	61189 08853	80,0	45,0	M10	27,0
61189 05857	50,0	70,0	M8	27,0	61189 08854	80,0	70,0	M10	27,0
61189 05851	50,0	45,0	M10	27,0	61189 08851	80,0	45,0	M12	27,0
61189 05852	50,0	70,0	M10	27,0	61189 08852	80,0	70,0	M12	27,0
61189 05853	50,0	45,0	M12	27,0	61189 08855	80,0	70,0	M16	27,0
61189 05854	50,0	70,0	M12	27,0	61189 08856	80,0	120,0	M16	27,0
61189 08861	80,0	45,0	M8	27,0	61189 08857	80,0	100,0	M20	27,0
61189 08862	80,0	70,0	M8	27,0					



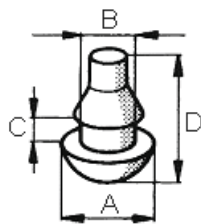
Material: Polyamid 6, Gewinde Stahl verzinkt.
 Farbe: schwarz

Mit Gummi auf Anfrage!

Article	A	B	C	D	E	Article	A	B	C	D	E
	mm	mm		mm	mm		mm	mm		mm	mm
61190 08858	80,0	45,0	M8	27,0	9,0	61190 08852	80,0	70,0	M12	27,0	9,0
61190 08859	80,0	70,0	M8	27,0	9,0	61190 08855	80,0	70,0	M16	27,0	9,0
61190 08853	80,0	45,0	M10	27,0	9,0	61190 08856	80,0	120,0	M16	27,0	9,0
61190 08854	80,0	70,0	M10	27,0	9,0	61190 08857	80,0	100,0	M20	27,0	9,0
61190 08851	80,0	45,0	M12	27,0	9,0						

047/049/068 Einsteckfüßchen

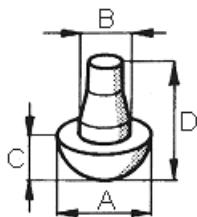
047 Einsteckfüßchen



Material: Weich-PVC
Farbe: schwarz

Article	A	B	C	D
	mm	mm	mm	mm
047 0600	10,0	6,0	2,5	19,0

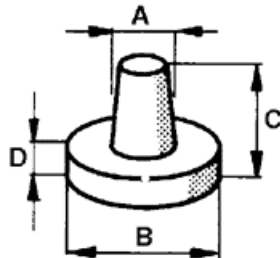
049 Einsteckfüßchen



Material: Weich-PVC
Farbe: natur

Article	A	B	C	D
	mm	mm	mm	mm
049 1000	9,0	4,2	3,5	13,0

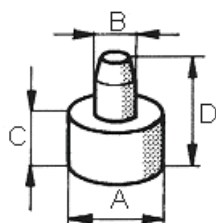
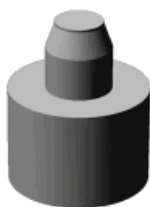
049 Einsteckfüßchen (konisch)



Material: PVC
Farbe: schwarz

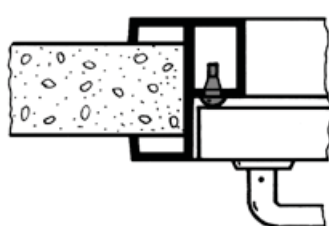
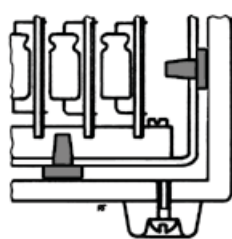
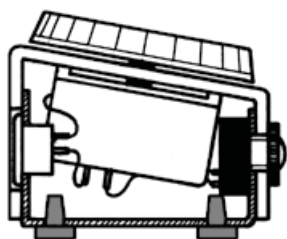
Article	A	B	C	D
	mm	mm	mm	mm
049 0800	3,0	8,0	10,0	3,0
049 1200	4,0	12,0	10,0	3,0
049 1300	5,0	13,0	10,0	3,0
049 1600	5,0	16,0	10,0	4,0

068 Einsteckfüßchen

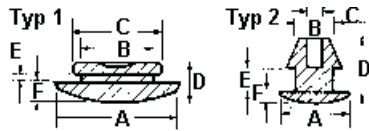
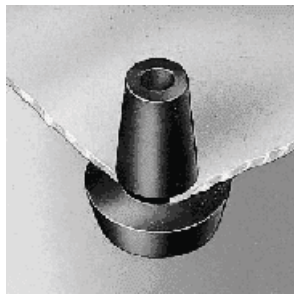


Material: LDPE
Farbe: grau

Article	A	B	C	D
	mm	mm	mm	mm
068 0100	10,0	4,7	7,0	12,0

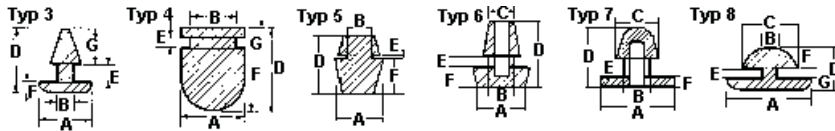


187 Tüllenfüße



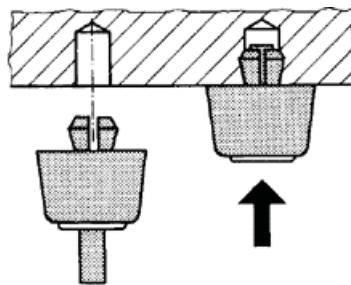
Diese Füße sind zum Einbau in Metall- und Kunststoffgehäusen geeignet und werden einfach per Hand in die gestanzten oder gebohrten Löcher eingedrückt.

Material: PVC
Farbe: schwarz



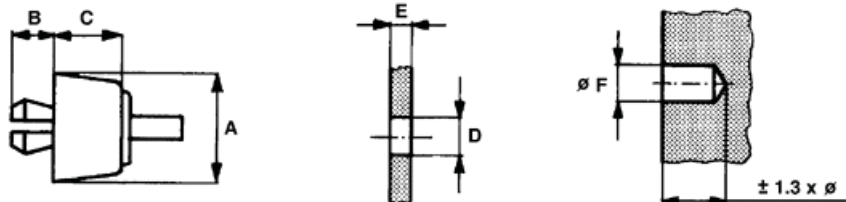
Article	Typ	A	B	C	D	E	F	G
		mm	mm	mm	mm	mm	mm	mm
187 0011	1	19,0	12,0	13,1	6,5	0,8	3,2	-
187 0012	1	15,4	9,8	12,7	7,0	1,6	2,7	-
187 0013	1	19,0	12,8	15,9	7,5	1,6	3,2	-
187 0021	2	10,3	4,5	2,2	7,6	1,6	2,0	-
187 0031	2	15,8	6,8	4,0	9,7	1,5	5,0	-
187 0032	3	7,9	3,2	-	8,3	3,2	1,6	3,5
187 0041	3	7,9	3,7	-	7,0	1,6	2,4	3,0
187 0051	4	12,5	9,5	-	17,0	1,6	12,0	3,5
187 0061	5	10,9	6,9	-	12,8	0,7	8,1	-
187 0062	6	12,0	6,0	5,8	15,2	2,1	4,6	-
187 0071	7	25,3	7,0	15,3	20,0	5,0	4,0	-
187 0081	8	17,5	11,1	13,3	10,0	2,6	4,0	4,0

120 Gerätefüße



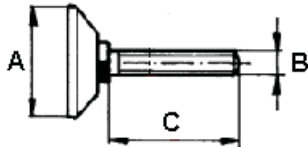
Reduzierung der Montagekosten durch eine rationelle Befestigung. Aus solidem Polyamid mit Aufstützfläche aus weichem EVA. Hoher Reibungswert verhindert Verrutschen.

Material: PA-6 + EVA, * = Polystyrol
Farbe: schwarz



Article	A	B	C	D	E	F	G
	mm	mm	mm	mm	mm	mm	mm
120 0412	12,0	5,0	4,0	6,0 - 6,2	0,8 - 2,0	6,0 - 6,2	ca. 8,0
120 0716	16,0	7,0	7,0	7,0 - 7,2	1,5 - 3,0	7,0 - 7,2	ca. 10,0
120 1316	16,0	8,0	12,0	7,7 - 7,8	0,9 - 1,5	8,0 - 8,1	ca. 11,0
120 1117*	17,0	4,0	11,0	7,0 - 7,1	1,0 - 2,5	7,0 - 7,2	ca. 7,0
120 1521	21,0	7,0	15,0	7,7 - 7,8	0,8 - 4,0	8,0 - 8,2	ca. 10,0

148 Justierfüße



Als Stütze und Höhenregler für Maschinen, Geräte, Schränke und Möbel. Die Aufstellfläche ist aus starkem Kunststoff, das Gewinde aus verzinktem Stahl.

Belastbarkeit: M8 bis 400 kg, M10 bis 550 kg, M12 bis 650 kg
Fußhöhe = ca. 10 mm

Material: Polypropylen
Farbe: schwarz

Auch in Ausführung "drehbar" lieferbar!

Weitere Ausführungen auf Anfrage

Article	A	B	C
	mm		mm
148 3801	38,0	M8	16,0
148 3802	38,0	M8	20,0
148 3803	38,0	M8	30,0
148 3804	38,0	M8	40,0
148 3805	38,0	M8	50,0
148 3806	38,0	M8	60,0
148 3807	38,0	M8	70,0
148 3808	38,0	M8	80,0

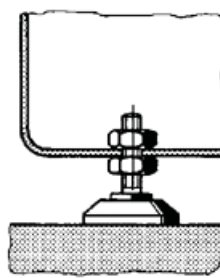
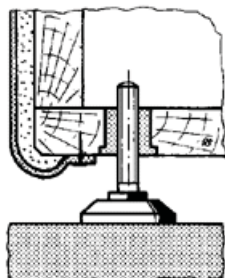
Article	A	B	C
	mm		mm
148 3809	38,0	M8	90,0
148 3810	38,0	M8	100,0
148 3812	38,0	M8	120,0
148 3001	38,0	M10	16,0
148 3002	38,0	M10	20,0
148 3003	38,0	M10	30,0
148 3004	38,0	M10	40,0

Article	A	B	C
	mm		mm
148 3005	38,0	M10	50,0
148 3006	38,0	M10	60,0
148 3007	38,0	M10	70,0
148 3008	38,0	M10	80,0
148 3009	38,0	M10	90,0
148 3010	38,0	M10	100,0
148 3012	38,0	M10	120,0

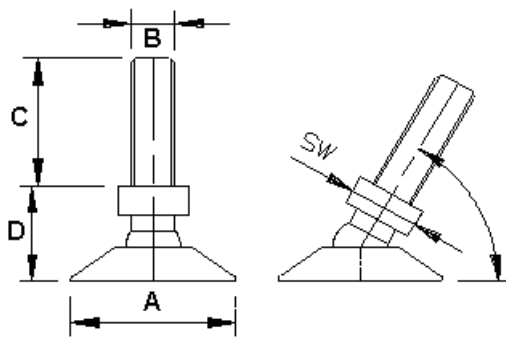
Article	A	B	C
	mm		mm
148 4801	48,0	M8	16,0
148 4802	48,0	M8	20,0
148 4803	48,0	M8	30,0
148 4804	48,0	M8	40,0
148 4805	48,0	M8	50,0
148 4806	48,0	M8	60,0
148 4807	48,0	M8	70,0
148 4808	48,0	M8	80,0

Article	A	B	C
	mm		mm
148 4809	48,0	M8	90,0
148 4810	48,0	M8	100,0
148 4812	48,0	M8	120,0
148 4001	48,0	M10	16,0
148 4002	48,0	M10	20,0
148 4003	48,0	M10	30,0
148 4004	48,0	M10	40,0

Article	A	B	C
	mm		mm
148 4005	48,0	M10	50,0
148 4006	48,0	M10	60,0
148 4007	48,0	M10	70,0
148 4008	48,0	M10	80,0
148 4009	48,0	M10	90,0
148 4010	48,0	M10	100,0
148 4012	48,0	M10	120,0



144 Stellsteller mit Kugelgelenk

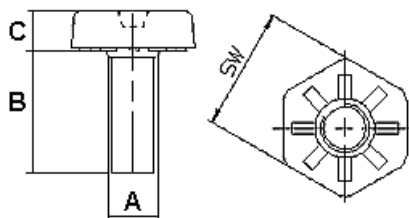


Material: Polyamid und Stahlgewinde, glanzverzinkt
Farbe: schwarz

SW 12, * = ohne sechskant. Neigungswinkel: 15°.

Article	A	B	C	D	Article	A	B	C	D	Article	A	B	C	D
	mm		mm	mm		mm		mm	mm		mm		mm	mm
144 2827*	26,0	M8	27,0	11,0	144 4052	40,0	M10	52,0	21,0	144 4772	47,0	M10	72,0	21,0
144 3827*	30,0	M8	27,0	12,0	144 4062	40,0	M10	62,0	21,0	144 4710	47,0	M10	100,0	21,0
144 3045	30,0	M10	45,0	21,0	144 4072	40,0	M10	72,0	21,0	144 5825*	55,0	M8	25,0	15,0
144 3052	30,0	M10	52,0	21,0	144 4100	40,0	M10	100,0	21,0	144 5045	55,0	M10	45,0	21,0
144 3062	30,0	M10	62,0	21,0	144 4827*	47,0	M8	27,0	14,0	144 5052	55,0	M10	52,0	21,0
144 3072	30,0	M10	72,0	21,0	144 4745	47,0	M10	45,0	21,0	144 5062	55,0	M10	62,0	21,0
144 3100	30,0	M10	100,0	21,0	144 4752	47,0	M10	52,0	21,0	144 5072	55,0	M10	72,0	21,0
144 4045	40,0	M10	45,0	21,0	144 4762	47,0	M10	62,0	21,0	144 5100	55,0	M10	100,0	21,0

153 Bodenausgleichsschrauben



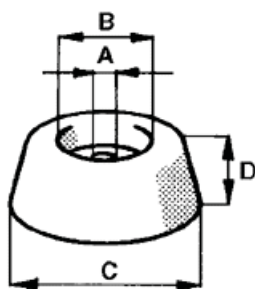
Sechskant, mit verzinkter Metallschraube.

Material: Polyethylene
Farbe: schwarz

Weitere Ausführungen auf Anfrage!

Article	Fußabmessung SW	A	B	C	Article	Fußabmessung SW	A	B	C
	mm	mm	mm	mm		mm	mm	mm	mm
153 1916	19	M8x20	16,0	8,0	153 2635	25	M10x40	35,0	8,0
153 2016	20	M8x20	16,0	8,0	153 2645	25	M10x50	45,0	8,0
153 2026	20	M8x30	26,0	8,0	153 3016	30	M8x20	16,0	8,0
153 2036	20	M8x40	36,0	8,0	153 3026	30	M8x30	26,0	8,0
153 2046	20	M8x50	46,0	8,0	153 3036	30	M8x40	36,0	8,0
153 2516	25	M8x20	16,0	8,0	153 3046	30	M8x50	46,0	8,0
153 2526	25	M8x30	26,0	8,0	153 3115	30	M10x20	15,0	8,0
153 2536	25	M8x40	36,0	8,0	153 3125	30	M10x30	25,0	8,0
153 2546	25	M8x50	46,0	8,0	153 3135	30	M10x40	35,0	8,0
153 2615	25	M10x20	15,0	8,0	153 3145	30	M10x50	45,0	8,0
153 2625	25	M10x30	25,0	8,0					

048 Stoßpuffer/Schraubfüße

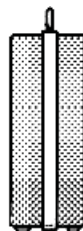
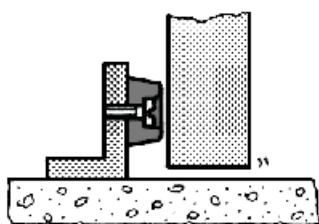


Sicherer Halt durch Verschraubung. Niedrige Bauhöhe und glatte, saubere Verarbeitung.

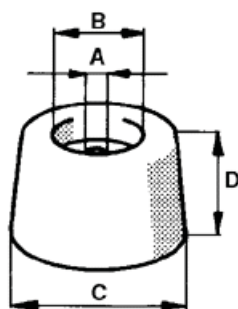
Material: PVC, * = PE, +=TPG

Farben: schwarz Endnummer 114, weiß 113

Article	A	B	C	D	Article	A	B	C	D
	mm	mm	mm	mm		mm	mm	mm	mm
048 1500 114	2,5	6,0	13,0	6,0	048 0020 114	4,3	8,0	20,0	10,0
048 1500 113	2,5	6,0	13,0	6,0	048 0020 113	4,3	8,0	20,0	10,0
048 0015 114	3,2	7,5	13,0	7,5	048 2500 114	2,0	9,5	24,0	10,0
048 0015 113	3,2	7,5	13,0	7,5	048 2500 113	2,0	9,5	24,0	10,0
048 1700 114*	4,0	7,5	17,5	9,5	048 0025 114	5,0	13,5	25,0	12,0
048 2000 114	4,0	9,0	19,0	10,0	048 0025 113	5,0	13,5	25,0	12,0
048 2000 113	4,0	9,0	19,0	10,0	048 3000 114	5,3	13,5	29,0	12,0
048 2013 114	4,0	9,0	19,0	13,0	048 3000 113	5,3	13,5	29,0	12,0
048 2013 113	4,0	9,0	19,0	13,0	048 0030 114	5,3	12,0	30,0	12,0
048 2014 114+	4,7	9,5	19,8	11,9	048 0030 113	5,3	12,0	30,0	12,0



066 Türpuffer



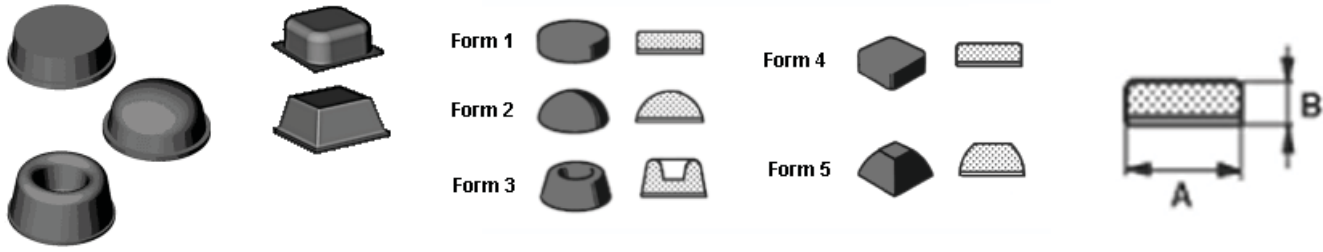
Einfach mit Schraube oder Nagel anzubringen. Normale Bauhöhe gleicht große Toleranzabweichungen in Baubeschlägen aus. Anzubringen in Türbeschlägen, Schiebetüren etc.

Material: PVC

Farbe: schwarz

Article	A	B	C	D
	mm	mm	mm	mm
066 0200	4,1	9,0	20,0	23,0
066 0250	5,1	11,0	25,0	24,0
066 0300	6,5	14,0	29,0	25,0
066 0301	7,5	12,0	31,0	25,0

117 Selbstklebende Puffer



Rutsch - und abriebfest! Hitzebeständig bis 65°C.

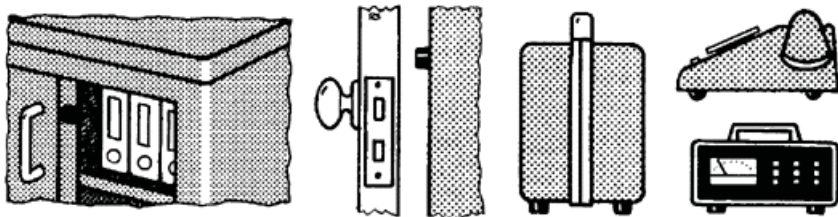
Material: Weich-PVC / Polyurethan, * = Zellkautschuk EPDM (nur schwarz)

Farben: ohne Endnummer schwarz, 000 = transparent, 500 = weiß

+ = konische Ausführung

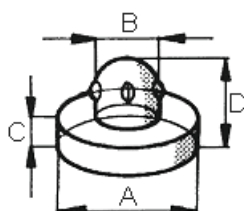
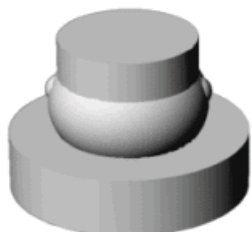
Weitere Ausführungen auf Anfrage

Article	A	B	Form	Article	A	B	Form
	mm	mm			mm	mm	
117 0001	13,0	1,3	1	117 0005	16,0	8,0	2
117 0002	12,7	3,5	1	117 0005 500	16,0	8,0	2
117 0011+	12,7	3,5	1	117 0020 000	9,5	3,8	2
117 0003	12,7	6,3	1	117 0021	19,0	9,6	2
117 0017	8,0	2,8	1	117 0006	22,4	10,1	3
117 0018	19,0	4,0	1	117 0013	12,7	3,1	4
117 0019	20,0	5,0	1	117 0024	12,7	3,4	4
117 2005*	20,5	8,0	1	117 0008	12,7	5,4	4
117 0012 000	8,0	2,2	2	117 0022	10,2	2,5	4
117 0004	11,0	5,0	2	117 0014	12,7	5,8	5
117 0004 000	11,0	5,0	2	117 0010	20,5	7,6	5



069/070 Glasauflagen

069 Glasauflagen

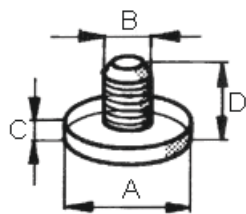
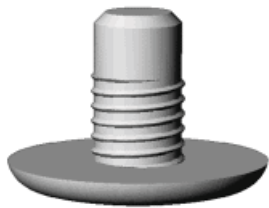


Material: Weich-PVC
Farbe: transparent

* = ohne Wulst

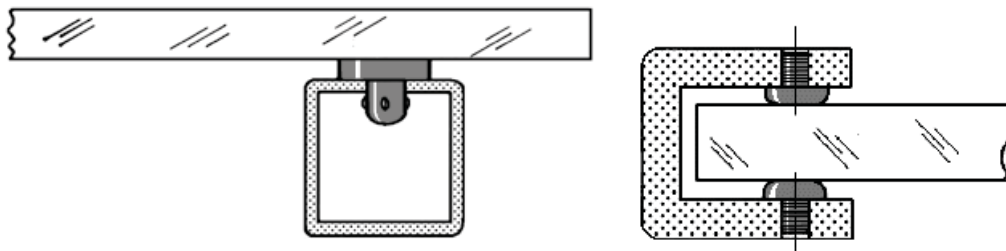
Article	A	B	C	D
	mm	mm	mm	mm
069 0080*	8,0	4,0	2,5	6,0
069 0140	14,0	8,0	3,0	7,0
069 0160	16,0	8,0	3,0	9,0

070 Glasauflagen

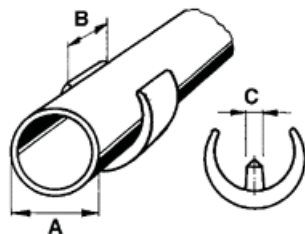


Material: Weich-PVC
Farbe: transparent

Article	A	B	C	D
	mm	mm	mm	mm
070 0120	12,0	4,2	2,0	9,0



147 Klemmschalengleiter



Zum Schutz von Fußböden usw. Einfach ohne Werkzeug zu montieren.

Material: Polyäthylen

Farbe: schwarz Endnummer 699, weiß 600

Article	A	B	C	Article	A	B	C
	mm	mm	mm		mm	mm	mm
147 0150 699	14,0 - 16,0	20,0	5,5	147 0210 699	20,0 - 22,0	20,0	5,5
147 0150 600	14,0 - 16,0	20,0	5,5	147 0210 600	20,0 - 22,0	20,0	5,5
147 0170 699	16,0 - 18,0	20,0	5,5	147 0250 699	24,0 - 26,0	25,0	5,5
147 0170 600	16,0 - 18,0	20,0	5,5	147 0250 600	24,0 - 26,0	25,0	5,5
147 0190 699	18,0 - 20,0	20,0	5,5	147 0290 699	28,0 - 30,0	30,0	7,5
147 0190 600	18,0 - 20,0	20,0	5,5	147 0290 600	28,0 - 30,0	30,0	7,5

