



Robustna zapirala za peči in komore

Robust latches for furnaces and chambers

METALIKA KACIN

Slovenija

(+386) 04 510 53 60

info@metalika-kacin.com

Hrvatska

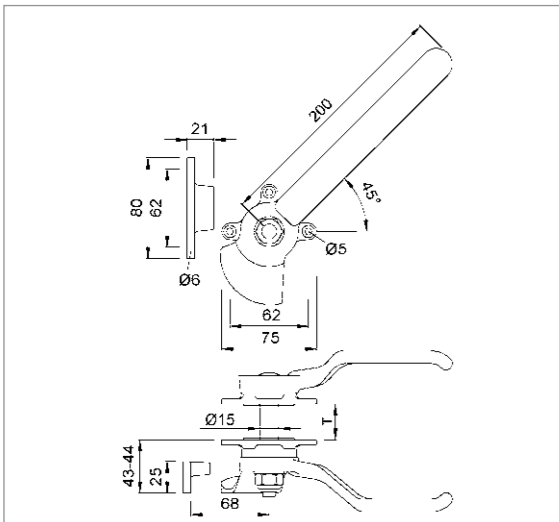
(+385) 051 213 060

hrvatska@metalika-kacin.com

Srbija

(+381) 011 25 21 756

srbija@metalika-kacin.com



6001..

T = door thickness
25 - 30 mm

6002..

30 - 35 mm

6003..

35 - 40 mm

6004..

40 - 45 mm

6005..

45 - 50 mm

6006..

50 - 55 mm

6007..

55 - 60 mm

6008..

60 - 65 mm

6009..

65 - 70 mm

Standard design

Malleable cast iron

silver stove enamelled	.02
hot galvanised	.07

unit	1 piece
------	---------

Piece weight

malleable cast iron	1.340 kg
---------------------	----------

for two-sided door operation with centre spindle of steel, with clamp, pressure spring, felt gasketing

other door thicknesses on request

Mounting:

Bore a hole into the door for the spindle according to the dimensions of the below drawing, screw on the fixing rosettes with the shimmed felt gasketing in such a way that two screw holes each align with the centre hole horizontally or vertically, put through the spindle part and tighten the female part with laid-on pressure spring with a lock nut.

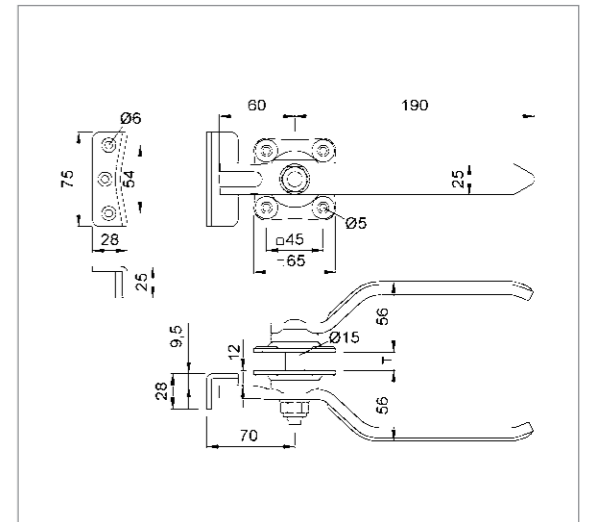
Fix the clamp in the relevant position in the door frame.

The actuation path of the lever is at 45°. The lock should be installed in such a way that the lever faces diagonally upwards at 45° in the open position.

Fig. depicts lock for left door

Order example

Piece	Part no.	Finish no.	right/left
... Piece	6001	.02	L



6101..

T = door thickness
25 - 30 mm

6102..

30 - 35 mm

6103..

35 - 40 mm

6104..

40 - 45 mm

6105..

45 - 50 mm

6106..

50 - 55 mm

6107..

55 - 60 mm

6108..

60 - 65 mm

6109..

65 - 70 mm

Standard design

Steel

blue passivated	.06
-----------------	------------

Stainless steel

brushed	.82
polished	.83

unit	1 piece
------	---------

Piece weight

steel	1.230 kg
stainless steel	1.180 kg

for two-sided door operation of steel or stainless steel, with lock plate, pressure spring, felt gasketing

Other door thicknesses on request

Mounting:

Bore a hole into the door for the spindle according to the dimensions of the below drawing, screw on the fixing rosettes with the shimmed felt gasketing in such a way that two screw holes each align with the centre hole horizontally or vertically, put through the spindle part and tighten the female part with laid-on pressure spring with a lock nut.

Fix the lock plate in the relevant position in the door frame.

The actuation path of the lever is at 90°. The lock should be installed in such a way that the lever faces upwards in the open position.

usable for right and left.

Order example

Piece	Part no.	Finish no.
... Piece	6101	.06

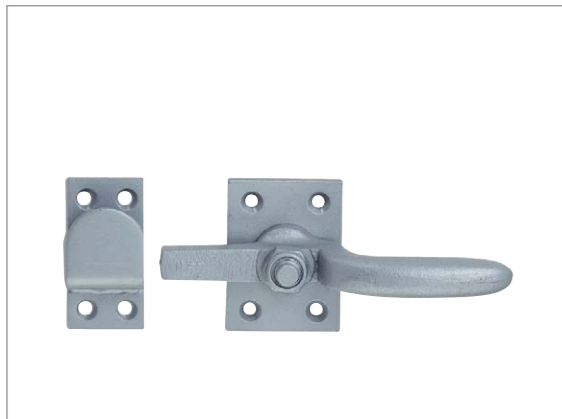
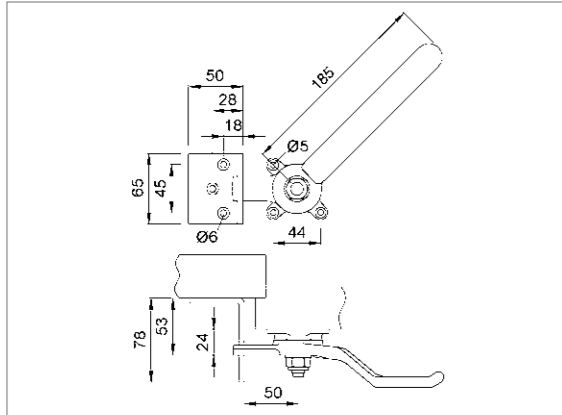




6028..

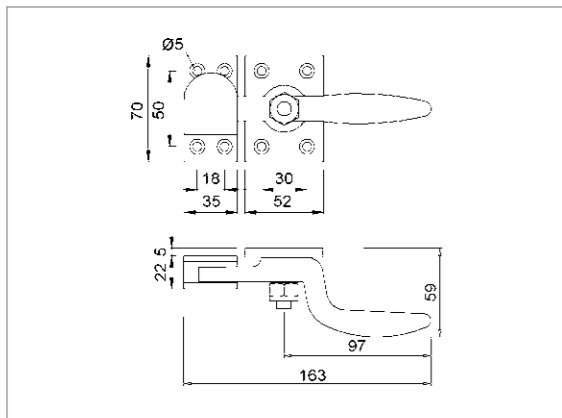
with angled strike plate for one-sided door operation, of malleable cast iron, angled strike plate of steel

Fig. depicts lock for right door



6029..

Locking lever of malleable cast iron on base plate of steel, clamp of steel



Standard design

Malleable cast iron

silver stove enamelled	.02
hot galvanised	.07

unit	1 piece
------	---------

Piece weight

malleable cast iron	0.810 kg
---------------------	----------

Mounting:

The lock is screwed on according to the dimensions of the drawing shown here and the strike plate fixed in the relevant position. The lock should be installed in such a way that the lever is level in the open position. The actuation path of the lever is at 45°.

Fig. depicts lock for right door

Standard design

Malleable cast iron

silver stove enamelled	.02
hot galvanised	.07

unit	5 pieces
------	----------

Piece weight

malleable cast iron	0.610 kg
---------------------	----------

Order example

Piece	Part no.	Finish no.	right/left
... Piece	6028	.02	R



6128..

with strike plate for welding on usable for right and left

6129..

with angled strike plate for screwing on

for one-sided door operation of steel or stainless steel

Mounting:

The lock is screwed on according to the dimensions of the drawing shown here and the strike plate welded or screwed on in the relevant position. The lock should be mounted in such a way that the lever is level when in closed position and facing downwards when in open position. The actuation path of the lever is at 90°.

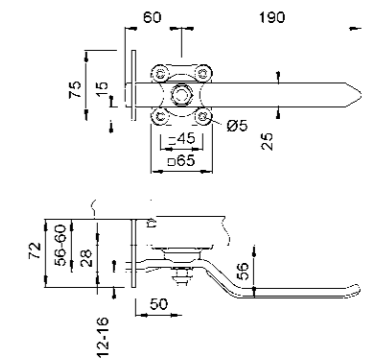
Note

6128..: usable for right and left
6129..: when ordering please indicate right or left

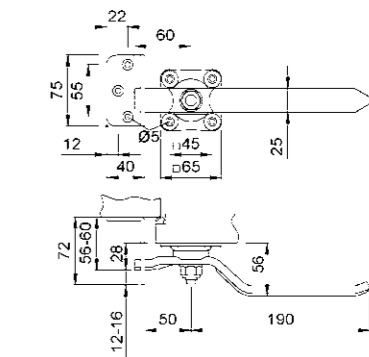
Fig. depicts lock for right door



6128..



6129..



Standard design

Steel

blue passivated	.06
-----------------	-----

Stainless steel

brushed	.82
polished	.83

unit	1 piece
------	---------

Piece weight

steel	6128..	0.700 kg
	6129..	0.770 kg
stainless steel	6128..	0.680 kg
	6129..	0.750 kg

Order example

Piece	Part no.	Finish no.	right/left
... Piece	6129	.06	R

Standard design
see 6028..

Steel	
silver stove enamelled	.02
hot galvanised	.07
unit	1 piece

Standard design
see 6029..

Steel	
silver stove enamelled	.02
hot galvanised	.07
unit	1 piece

Standard design
see 6001.. to 6009....

Cast iron	
silver stove enamelled	.02
hot galvanised	.07
unit	1 piece

Standard design
see 6101.. to 6109....

Steel	
blue passivated	.06
stainless steel	
brushed	.82
polished	.83
unit	1 piece

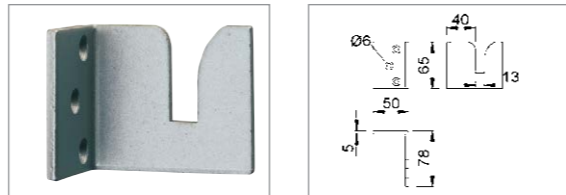
Standard design
6538.. see 6129..
6539.. see 6128..

Steel	
blue passivated	.06
Stainless steel	
brushed	.82
polished	.83
unit	1 piece

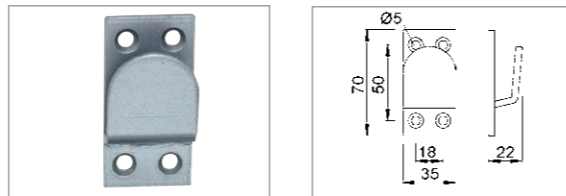
Order example

Piece	Part no.	Finish no.	right/left
... Piece	6531	.07	R

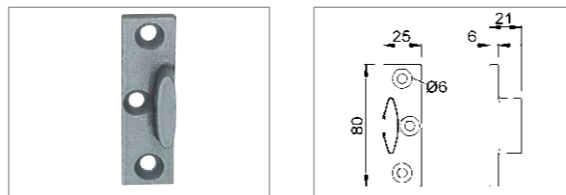
6531..
strike plate
*Please indicate:
right or left handed*



6533..
catch

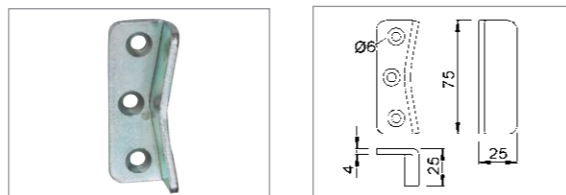


6536..
catch

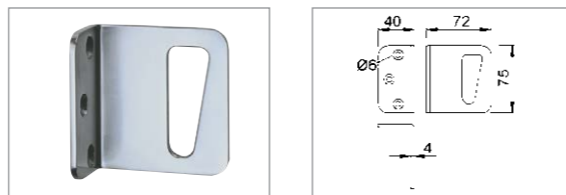


6537..
catch

ROSTFREI



6538..
strike plate
*Please indicate:
right or left handed*



6539..
strike plate

ROSTFREI



Compression Lever Latch

[6-270]



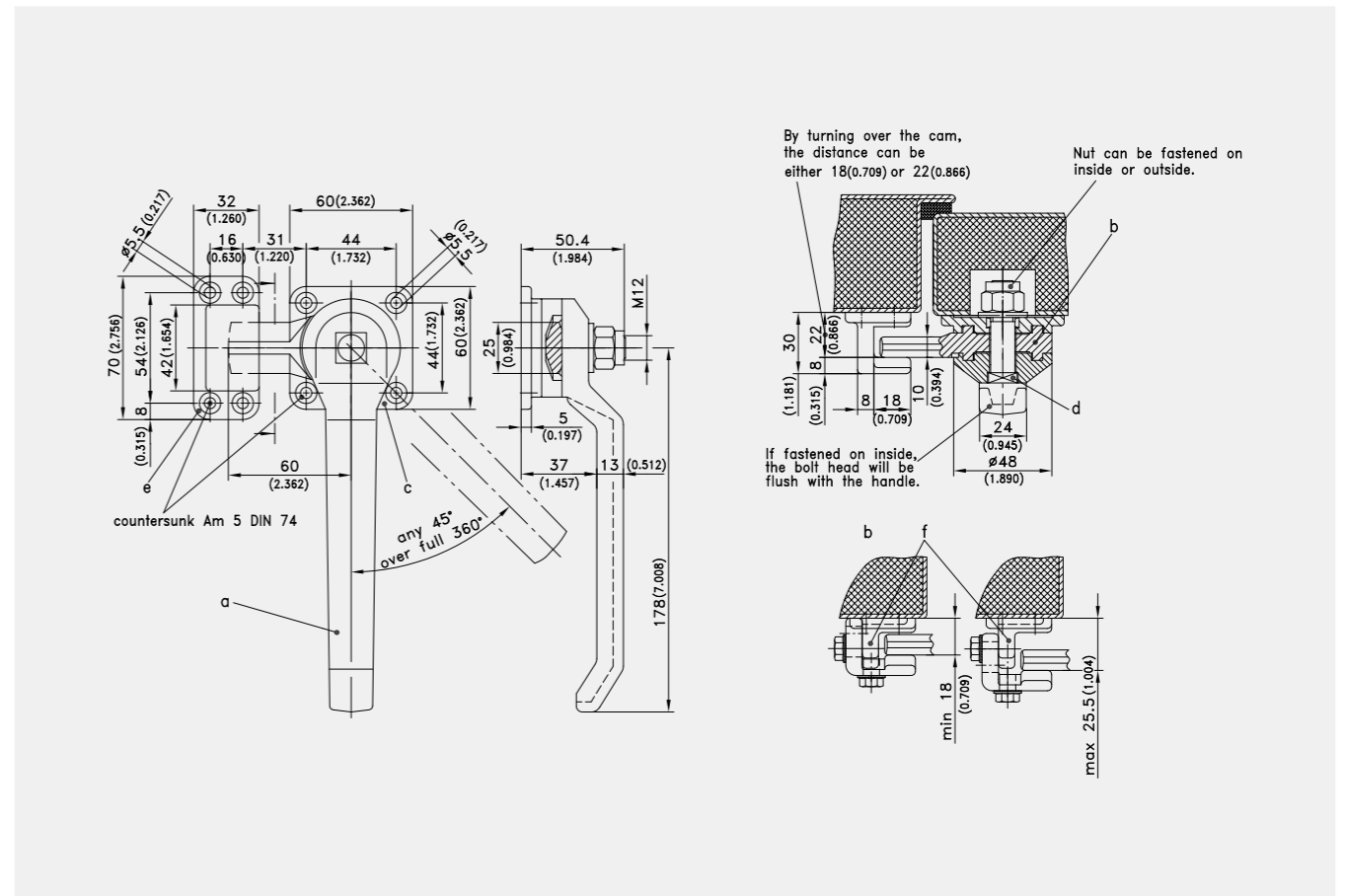
with cam

Advantages

- Heavy Duty Handle.
- RH or LH application.
- Cam can be turned over and can be fastened at any 45° angle.

Materials

- a), b), c), e) and f)
- **Handle, cam, base plate and hook:** EN-GJMW-400-5 DIN EN 1562, zinc plated
- d)
- **Shaft:** steel, zinc plated



Compression Lever Latch

Part Number	Installation type
a)-d) 232-9001.00-00000	screw-on

Accessories

e) 232-1201.00-00000	Look hook
f) 232-9201.00-00000	Look hook, adjustable



Advantages

- RH / LH application.
- IP65 according to DIN EN 60529.
- Big padlock eye Ø11mm.
- Version a) with escutcheon and additional fastening holes for screws Ø5mm.
- Version b) with escutcheon without fastening holes.
- Height adjustment of the cams by catch for standard cams 2-151.02 or 3-Point cam adapter adjustable 2-151.01 on square threaded rod M10.

Materials

- **Handle, escutcheon, square threaded rod and padlock eye:** Stainless steel AISI 316
- **Flat external seal:** EPDM
- **Washer:** Teflon

Remarks

1. Flat external seal
2. Cutout version a)
3. Cutout version b)
4. and 5. The padlock eye is asymmetrical. It serves as a stop for RH (4.) / LH (5.) applications.



Advantages

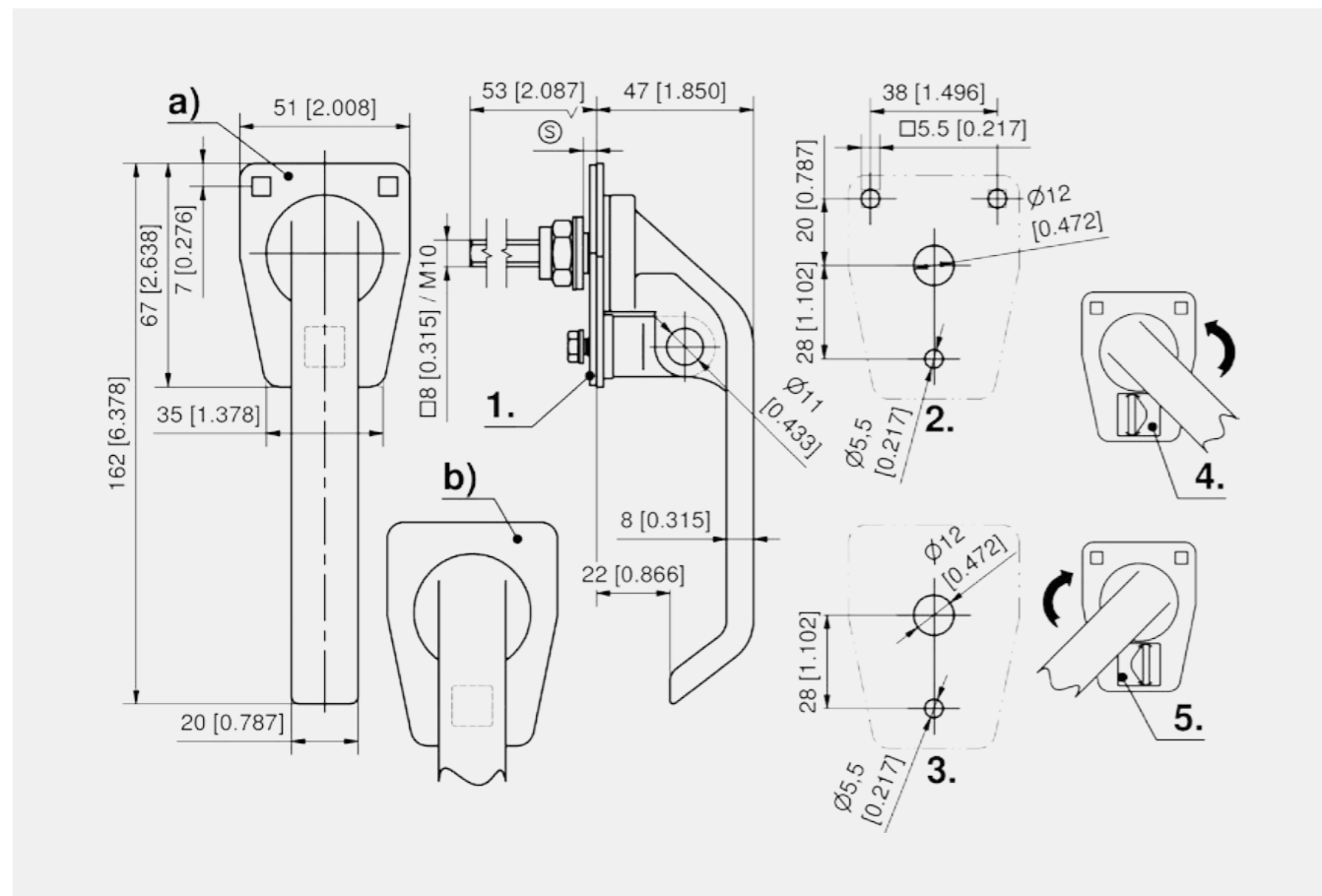
- RH / LH application.
- IP65 according to DIN EN 60529.
- Big padlock eye Ø11mm.
- Version a) with escutcheon and additional fastening holes for screws Ø5mm.
- Version b) with escutcheon without fastening holes.

Materials

- **Handle, escutcheon, square threaded rod and padlock eye:** stainless steel AISI 316
- **Flat external seal:** EPDM
- **Washer:** Teflon

Remarks

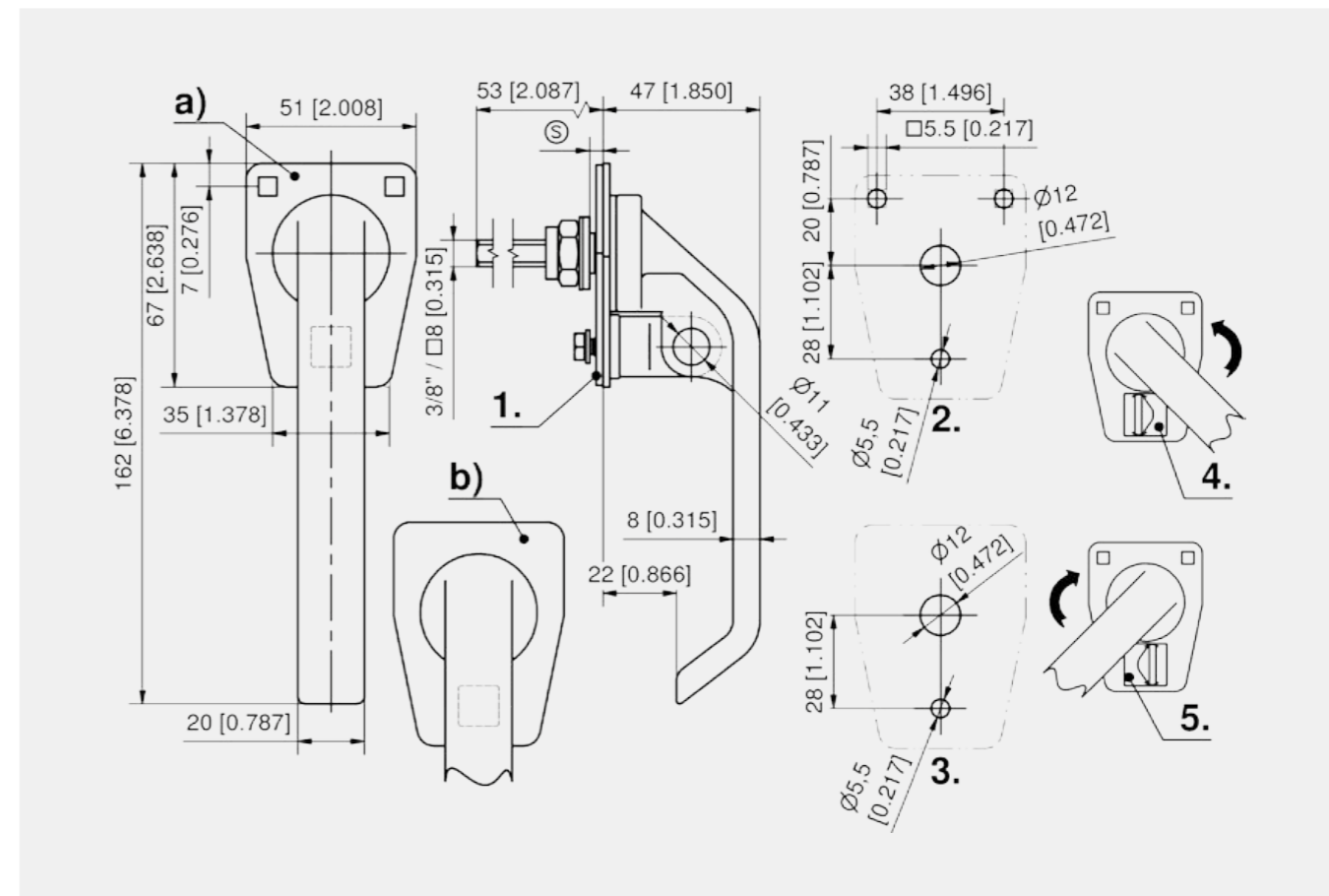
1. Flat external seal
2. Cutout version a)
3. Cutout version b)
4. and 5. The padlock eye is asymmetrical. It serves as a stop for RH (4.) / LH (5.) applications.



L-handle with thread M10

	Part Number	Version	Latching type	Installation type
a)	281-9006.00-00000	with fastening holes	padlock	screw-on
b)	281-9007.00-00000	without fastening holes	padlock	screw-on

Accessories	
183	2-151.01 3-Point Cam Adapter adjustable
178	2-151.02 Catch for standard Cams



L-handle with thread 3/8" - 16 UNC

	Part Number	Version	Latching type	Installation type
a)	281-9006.00-00001	with fastening holes	padlock	screw-on
b)	281-9007.00-00001	without fastening holes	padlock	screw-on

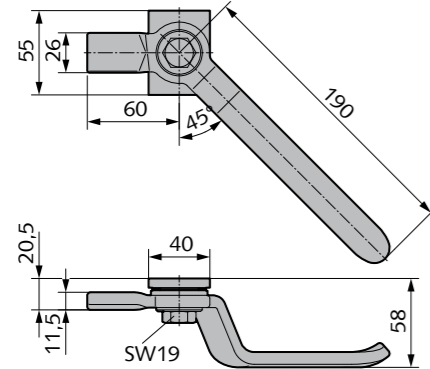


Abbildung zeigt linken Verschluss

Hebelverschluss, Zunge gerade

- Hebel einseitig
- rechteckige Rosette zum Anschweißen

Art.-Nr.Art	Richtung	Material/Oberfläche
07.604.0000.005	rechts	St blank
07.604.0000.010	rechts	St galv. verzinkt
07.605.0000.005	links	St blank
07.605.0000.010	links	St galv. verzinkt

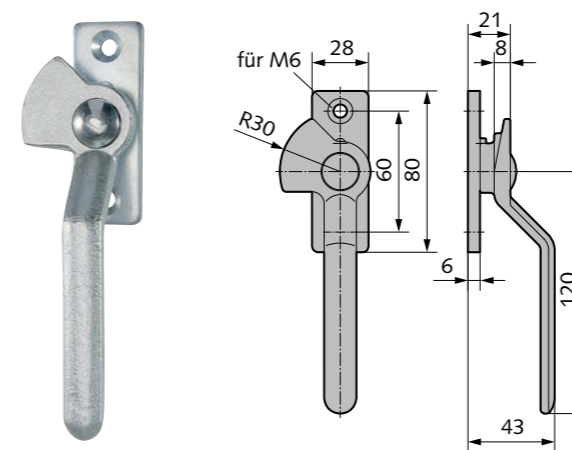


Abbildung zeigt linken Verschluss

Hebelverschluss, 120 mm lang

- Hebel einseitig
- rechteckige Rosette zum Anschrauben
- aus Stahl

Art.-Nr.	Richtung	Material/Oberfläche
07.608.0000.610	rechts	GTW galv. verzinkt
07.609.0000.610	links	GTW galv. verzinkt

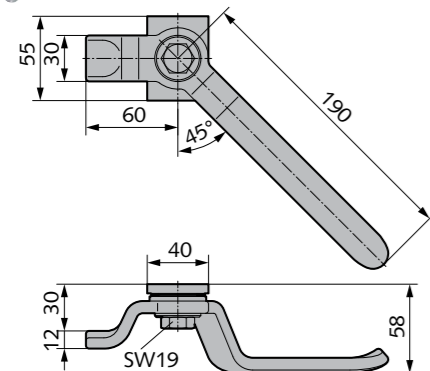


Abbildung zeigt linken Verschluss

Hebelverschluss, Zunge gekröpft

- Hebel einseitig
- rechteckige Rosette zum Anschweißen

Art.-Nr.Art	Richtung	Material/Oberfläche
07.606.0000.005	rechts	St blank
07.606.0000.010	rechts	St galv. verzinkt
07.607.0000.005	links	St blank
07.607.0000.010	links	St galv. verzinkt

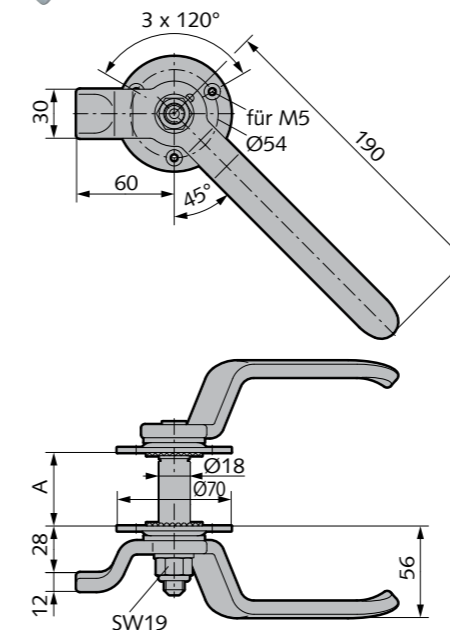


Abbildung zeigt linken Verschluss

Hebelverschluss, Zunge gekröpft

- Hebel doppelseitig
- runde Rosetten zum Anschrauben
- aus Stahl oder Edelstahl
- mit Sicherungsmutter und Filz-Dichtungsringen

Art.-Nr.Art	Türstärke A	Richtung
07.620.0020.---	20	rechts
07.621.0020.---	20	links
07.620.0025.---	25	rechts
07.621.0025.---	25	links
07.620.0030.---	30	rechts
07.621.0030.---	30	links
07.620.0035.---	35	rechts
07.621.0035.---	35	links
07.620.0040.---	40	rechts
07.621.0040.---	40	links
07.620.0045.---	45	rechts
07.621.0045.---	45	links
07.620.0050.---	50	rechts
07.621.0050.---	50	links
07.620.0055.---	55	rechts
07.621.0055.---	55	links
07.620.0063.---	63	rechts
07.621.0063.---	63	links

Lieferbare Oberflächen:

- .010 St galvanisch verzinkt
- .426 Edelstahl V2A matt gebürstet

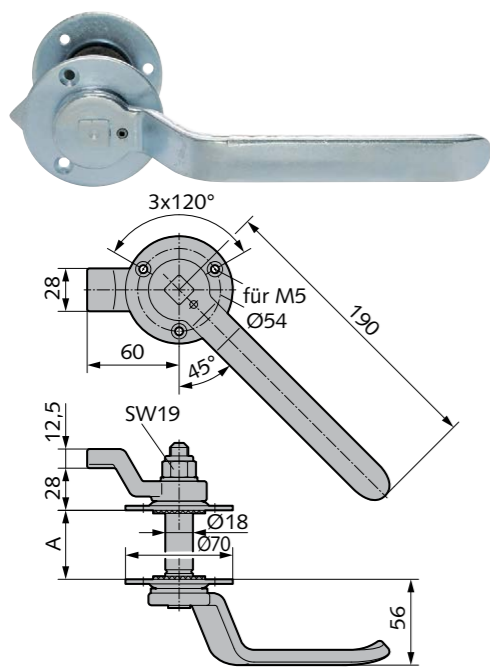


Abbildung zeigt linken Verschluss

Blendenverschluss, Zunge gekröpft

- runde Rosetten zum Anschrauben
- mit Sicherungsmutter und Filz-Dichtungsringen

Art.-Nr.	Türstärke A	Richtung	Material/Oberfläche
630.0020.010	20	rechts	St galv. verzinkt
631.0020.010	20	links	St galv. verzinkt
630.0025.010	25	rechts	St galv. verzinkt
631.0025.010	25	links	St galv. verzinkt
630.0030.010	30	rechts	St galv. verzinkt
631.0030.010	30	links	St galv. verzinkt
630.0035.010	35	rechts	St galv. verzinkt
631.0035.010	35	links	St galv. verzinkt
630.0040.010	40	rechts	St galv. verzinkt
631.0040.010	40	links	St galv. verzinkt
630.0045.010	45	rechts	St galv. verzinkt
631.0045.010	45	links	St galv. verzinkt
630.0050.010	50	rechts	St galv. verzinkt
631.0050.010	50	links	St galv. verzinkt
630.0055.010	55	rechts	St galv. verzinkt
631.0055.010	55	links	St galv. verzinkt
630.0063.010	63	rechts	St galv. verzinkt
631.0063.010	63	links	St galv. verzinkt

Blendenverschluss mit dreifacher Verriegelung

- Verriegelung dreifach
- Betätigung innen und außen
- mit Vierkantstange 18 x 18mm, 1650mm lang
- Messing-Rollzapfen 20mm Durchmesser
- mit Stangenführungen

Art.-Nr.	Türstärke A	Material/Oberfläche
634.0063.010	63	St galv. verzinkt
635.0063.010	63	St galv. verzinkt

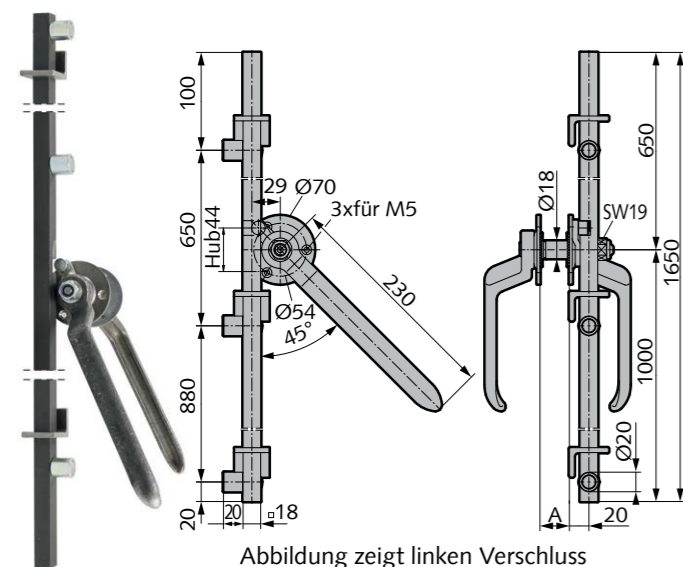
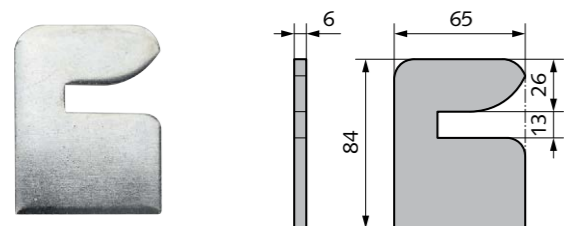


Abbildung zeigt linken Verschluss

Schließblech für Hebelverschlüsse

- zum Anschweißen
- aus Stahl oder Edelstahl

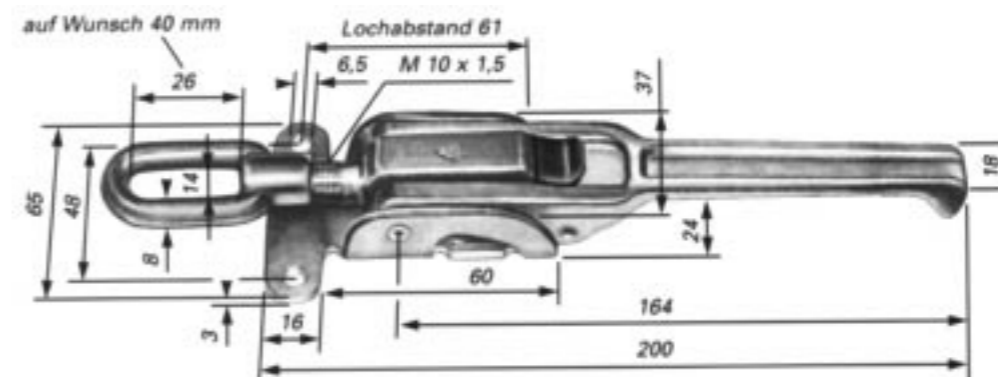
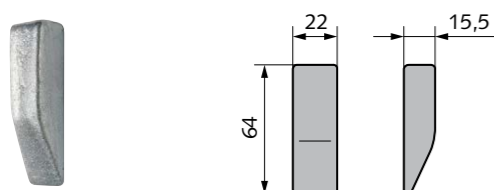
Art.-Nr.	Material/Oberfläche
680.0000.005	St blank
680.0000.010	St galv. verzinkt
680.0000.416	V2A poliert



Keilstück für Hebelverschlüsse

- zum Anschweißen

Art.-Nr.	Material/Oberfläche
681.0000.010	St galv. verzinkt



P3840

Spannverschluss Größe 0

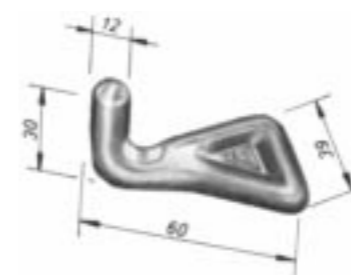
mit Sicherungstaste, Längenverstellung 15 mm,

Artikel-Nr.

Material/Oberfläche

P3840-00-0000
P3840-00-2010

Stahl roh, zum Anschweißen
Stahl, verzinkt, zum Anschrauben

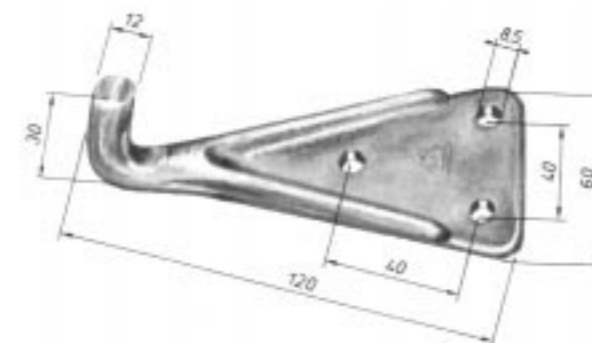


Gegenhaken

Artikel-Nr.: **Material/Oberfläche:**

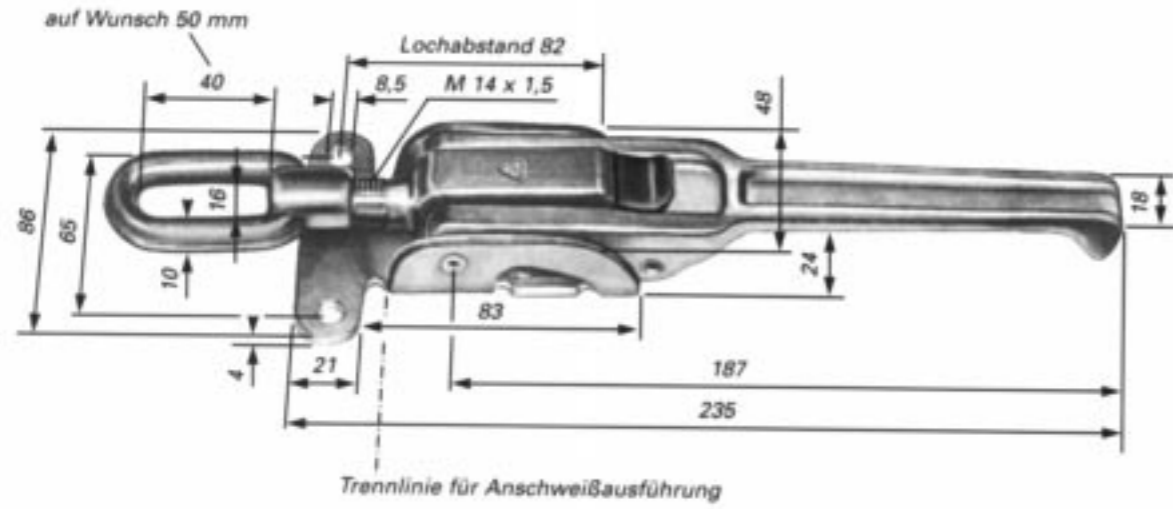
P3843

Stahl roh,
zum Anschweißen



P3844

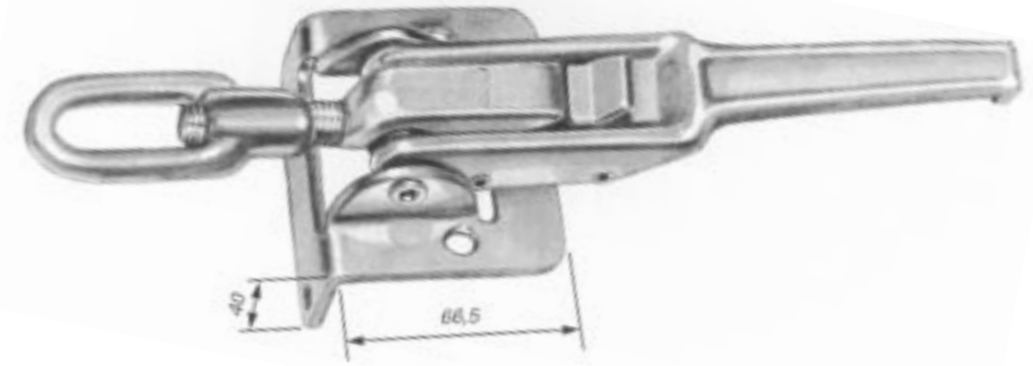
Stahl, verzinkt,
zum Anschrauben



P3841 **Spannverschluss Größe 1**
mit Sicherungstaste, Längenverstellung 25 mm,

Artikel-Nr. **Material/Oberfläche**

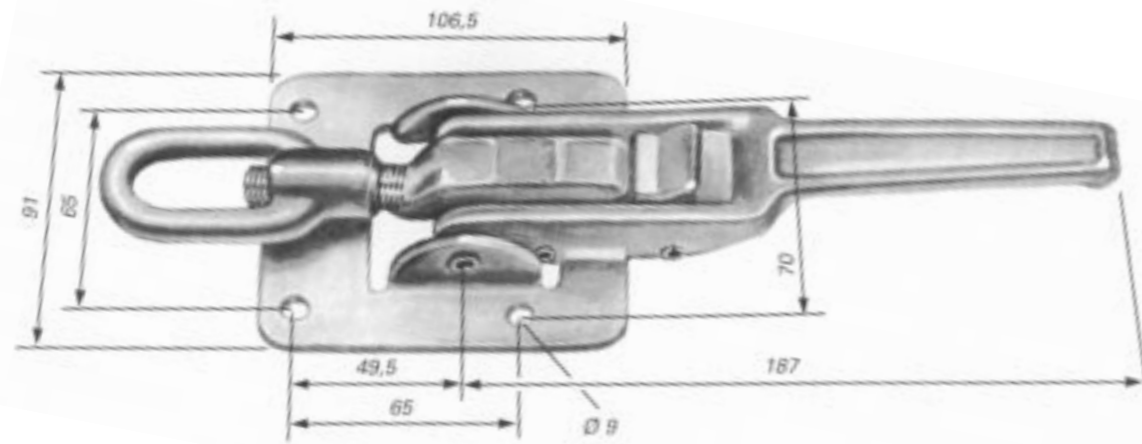
P3841-00-0000 Stahl roh, zum Anschweißen
P3841-00-2010 Stahl, verzinkt, zum Anschrauben



P3841.6 **Spannverschluss Größe 1**
wie P3841.4, jedoch mit abgekanteter Grundplatte

Artikel-Nr. **Material/Oberfläche**

P3841-00-2060 Stahl, verzinkt, zum Anschrauben



P3841.4 **Spannverschluss Größe 1**
wie P3841, jedoch mit 4-Loch-Anschraubplatte

Artikel-Nr. **Material/Oberfläche**

P3841-00-2040 Stahl, verzinkt, zum Anschrauben

Weitere Varianten

