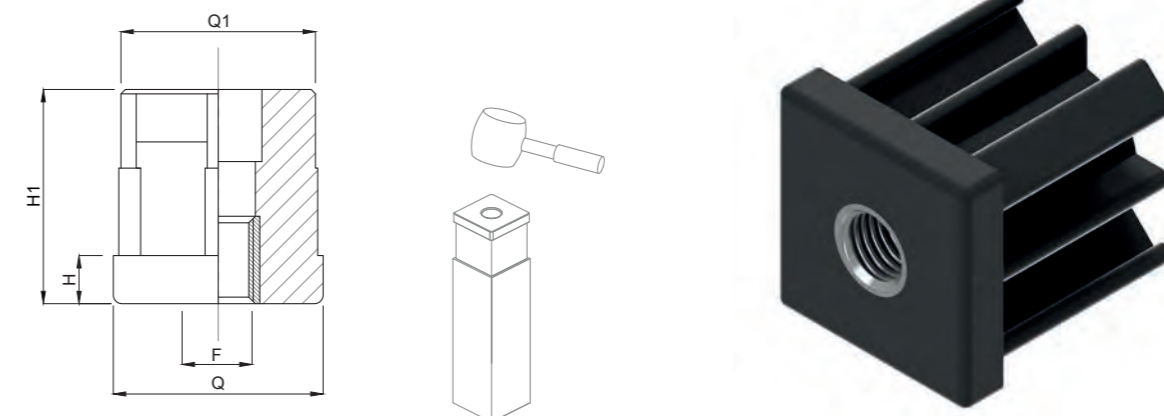


CODICE - CODE	DIMENSIONI PRINCIPALI - MAIN DIMENSIONS								CARICO STATICO MASSIMO MAXIMUM STATIC LOAD NEWTON
	ESTERNO EXTERNAL	SPESSORE THICKNESS	INTERNO INTERNAL	FILETTO SCREW-THREAD	D	D1	H	H1	
17000/M8	Ø30mm	1 mm	28 mm	M8	Ø 30	Ø 28,5	6	35	3200
17000				M10	Ø 30	Ø 28,5	6	35	3200
17001				M12	Ø 30	Ø 28,5	6	35	3200
17002				M14	Ø 30	Ø 28,5	6	35	3200
17003				M16	Ø 30	Ø 28,5	6	35	3200
17004/M8	Ø38mm	1,5 mm	35 mm	M8	Ø 38	Ø 35,5	8	43	5500
17004				M10	Ø 38	Ø 35,5	8	43	5500
17005				M12	Ø 38	Ø 35,5	8	43	5500
17006				M14	Ø 38	Ø 35,5	8	43	5500
17007				M16	Ø 38	Ø 35,5	8	43	5500
17008/M8	Ø42mm	1,5mm	39 mm	M8	Ø 42	Ø 39,5	8	42	6500
17008				M10	Ø 42	Ø 39,5	8	42	6500
17009				M12	Ø 42	Ø 39,5	8	42	6500
17010				M14	Ø 42	Ø 39,5	8	42	6500
17011				M16	Ø 42	Ø 39,5	8	42	6500
17012				M20	Ø 42	Ø 39,5	8	42	6500
17013/M8	Ø48mm	1,5 mm	45 mm	M8	Ø 48	Ø 45,5	11	49	8000
17013				M10	Ø 48	Ø 45,5	11	49	8000
17014				M12	Ø 48	Ø 45,5	11	49	8000
17015				M14	Ø 48	Ø 45,5	11	49	8000
17016				M16	Ø 48	Ø 45,5	11	49	8000
17017				M20	Ø 48	Ø 45,5	11	49	8000
17018/M8	Ø50mm	1,5 mm	47 mm	M8	Ø 50	Ø 47,5	11	49	8500
17018/M10				M10	Ø 50	Ø 47,5	11	49	8500
17018				M12	Ø 50	Ø 47,5	11	49	8500
17019				M14	Ø 50	Ø 47,5	11	49	8500
17020				M16	Ø 50	Ø 47,5	11	49	8500
17021				M20	Ø 50	Ø 47,5	11	49	8500
17022	Ø60mm	1,5 mm	57 mm	M14	Ø 60	Ø 57,5	12	50	10000
17023				M16	Ø 60	Ø 57,5	12	50	10000
17024				M20	Ø 60	Ø 57,5	12	50	10000
17025				M24	Ø 60	Ø 57,5	12	50	10000
17026	Ø60mm	2 mm	56 mm	M14	Ø 60	Ø 56,5	12	50	10000
17027				M16	Ø 60	Ø 56,5	12	50	10000
17028				M20	Ø 60	Ø 56,5	12	50	10000
17029				M24	Ø 60	Ø 56,5	12	50	10000
17030	Ø60mm	2,5 mm	55 mm	M14	Ø 60	Ø 55,5	12	50	10000
17031				M16	Ø 60	Ø 55,5	12	50	10000
17032				M20	Ø 60	Ø 55,5	12	50	10000
17033				M24	Ø 60	Ø 55,5	12	50	10000

• Materiale: poliammide rinforzata con sfera di vetro. Inserto filettato in ottone nichelato. A richiesta inserto filettato in acciaio inox: per Vs ordine aggiungere alla fine del codice standard la lettera "I". Es. 17000 I tappo d.30 con inserto filettato inox

• Material: polyamide reinforced with sphere glass. Threaded insert in nickel-plated brass. Stainless steel insert is also available: in this case to place your order, please add an "I" at the end of the standard code. Ex. 17000I

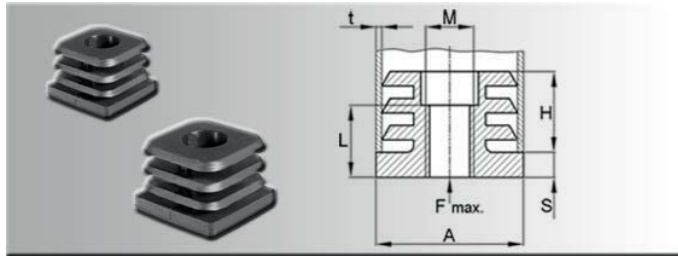


CODICE - CODE	DIMENSIONI PRINCIPALI - MAIN DIMENSIONS								CARICO STATICO MASSIMO MAXIMUM STATIC LOAD NEWTON
	ESTERNO EXTERNAL	SPESSORE THICKNESS	INTERNO INTERNAL	FILETTO SCREW-THREAD	Q	Q1	H	H1	
17034/M8	30x30	1,5 mm	27 mm	M8	30	27,5	6	33	5500
17034				M10	30	27,5	6	33	5500
17035				M12	30	27,5	6	33	5500
17036				M14	30	27,5	6	33	5500
17037				M16	30	27,5	6	33	5500
17038/M8	35x35	1,5 mm	32 mm	M8	35	32,5	8	43	7000
17038				M10	35	32,5	8	43	7000
17039				M12	35	32,5	8	43	7000
17040				M14	35	32,5	8	43	7000
17041				M16	35	32,5	8	43	7000
17043/M8	40x40	1,5 mm	37 mm	M8	40	37,5	8	43	8000
17043				M10	40	37,5	8	43	8000
17044				M12	40	37,5	8	43	8000
17045				M14	40	37,5	8	43	8000
17046				M16	40	37,5	8	43	8000
17047				M20	40	37,5	8	43	8000
17048/M8	40x40	2 mm	36 mm	M8	40	36,5	8	43	8000
17048				M10	40	36,5	8	43	8000
17049				M12	40	36,5	8	43	8000
17050				M14	40	36,5	8	43	8000
17051				M16	40	36,5	8	43	8000
17052				M20	40	36,5	8	43	8000
17053	50x50	1,5 mm	47 mm	M12	50	47,5	10	55	9500
17054				M14	50	47,5	10	55	9500
17055				M16	50	47,5	10	55	9500
17056				M20	50	47,5	10	55	9500
17057	50x50	2,5 mm	45 mm	M12	50	45,5	10	55	9500
17058				M14	50	45,5	10	55	9500
17059				M16	50	45,5	10	55	9500
17060				M20	50	45,5	10	55	9500

• Materiale: poliammide rinforzata con sfera di vetro. Inserto filettato in ottone nichelato. A richiesta inserto filettato in acciaio inox: per Vs ordine aggiungere alla fine del codice standard la lettera "I". Es. 17000 I tappo d.30 con inserto filettato inox

• Material: polyamide reinforced with sphere glass. Threaded insert in nickel-plated brass. Stainless steel insert is also available: in this case to place your order, please add an "I" at the end of the standard code. Ex. 17000I

Plugs with thread | Threaded plugs, square



Combinable with adjustable feet of product group 148 (page 104)
Axial load capacity: up to 300 kg max.

Material: PA
Colour: black

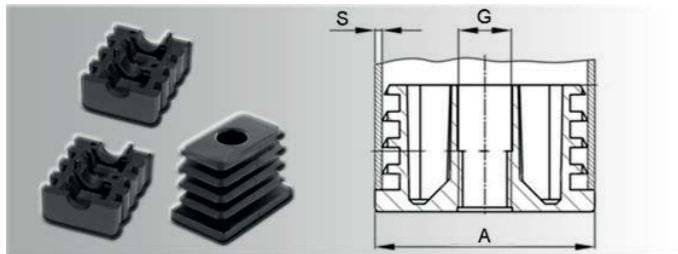
A x t = external pipe diameter x wall thickness
H = height / S = collar thickness

Further types on written request.

Part no.	Axt	H	MxL	S
1592008	20x20x1,5-2	16,5	M8x14,5	5
1592010	20x20x1,5-2	16,5	M10x14,5	5
1592208	22x22x1,5-2	16,5	M8x14,5	5
1592210	22x22x1,5-2	16,5	M10x14,5	5
1592508	25x25x1,5-2	16,5	M8x14,5	5
1592510	25x25x1,5-2	16,5	M10x14,5	5
1592512	25x25x1,5-2	16,5	M12x14,5	5

Part no.	Axt	H	MxL	S
1593008	30x30x1,5-2	16,5	M8x14,5	5
1593010	30x30x1,5-2	16,5	M10x14,5	5
1593012	30x30x1,5-2	16,5	M12x14,5	5
1593508	35x35x1,5-2	24,0	M8x14,5	5
1593510	35x35x1,5-2	24,0	M10x14,5	5
1593512	35x35x1,5-2	24,0	M12x14,5	5
1594010	40x40x1,5-2	24,0	M10x14,5	5

Plugs with thread | Threaded plugs, rectangular - two-part



Combinable with adjustable feet of product group 148 (page 104)
Axial load capacity: up to 300 kg max.

Material: PA
Colour: black - two-part
* = with inserted metal nut

A x S = external pipe diameter x wall thickness
G = female thread

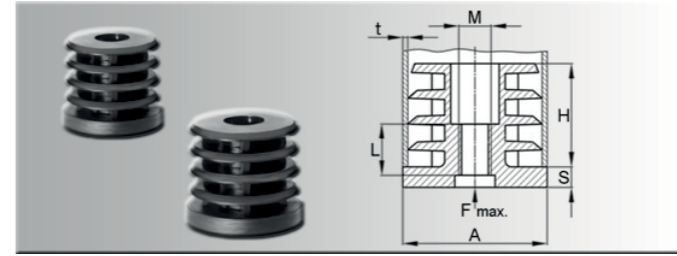
Further types on written request.

Part no.	AxS	G
0262015	20x15x1,5	M8
0262017	20x15x2,0	M8
0262517	no longer available	
0262520	25x20x1,5-2,0	M8
0262521	25x20x1,5-2,0	M10
0262522	25x20x1,5-2,0	M12
0263015	30x15x1,5-2,0	M8
0263016	30x15x1,5-2,0	M10
0263020	30x20x1,5-2,0	M8

Part no.	AxS	G
0263021	30x20x1,0-1,5	M10
0263022	30x20x2,0	M10
0263023	30x20x1,5	M12
0263520	35x20x1,5-2,0	M6
0263521	no longer available!	
0264020	40x20x1,5	M6
0264021	40x20x1,5-2,0	M8
0264022	40x20x1,5-2,0	M10
0264024	40x20x2,0	M12

Part no.	AxS	G
0264025	40x25x2,0	M10
0264030	40x30x1,5-2,0	M10
0264031	40x30x2,0	M10
0264525*	45x25x1,5-2,0	M10
0265020	50x20x1,5-2,0	M10
0265021	50x20x1,5-2,0	M12
0266040	60x40x1,5-2,0	M10

Plugs with thread | Threaded plugs, round



Combinable with adjustable feet of product group 148 (page 104)
Axial load capacity: up to 300 kg max.

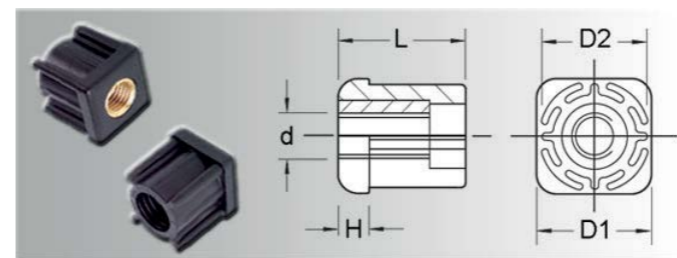
Material: PA
Colour: black
* = two-part

Further types on written request.

Part no.	Axt	H	MxL	S
1602008*	20x0,5	32,3	M8x32,3	5
1602208	22x1,5-2	16,5	M8x14,5	5
1602210	22x1,5-2	16,5	M10x14,5	5
1602508	25x1,5-2	16,5	M8x14,5	5
1602510	25x1,5-2	16,5	M10x14,5	5
1602512	25x1,5-2	16,5	M12x14,5	5
1602808	28x1,5-2	16,5	M8x14,5	5
1602810	28x1,5-2	16,5	M10x14,5	5
1602812	28x1,5-2	16,5	M12x14,5	5
1603008	30x1,5-2	16,5	M8x14,5	5
1603010	30x1,5-2	16,5	M10x14,5	5
1603012	30x1,5-2	16,5	M12x14,5	5
1603208	32x1,5-2	24,0	M8x14,5	5
1603210	32x1,5-2	24,0	M10x14,5	5

Part no.	Axt	H	MxL	S
1603212	32x1,5-2	24,0	M12x14,5	5
1603508	35x1,5-2	24,0	M8x14,5	5
1603510	35x1,5-2	24,0	M10x14,5	5
1603512	35x1,5-2	24,0	M12x14,5	5
1603808	38x1,5-2	24,0	M8x14,5	5
1603810	38x1,5-2	24,0	M10x14,5	5
1603812	38x1,5-2	24,0	M12x14,5	5
1604008	40x1,5-2	24,0	M8x14,5	5
1604010	40x1,5-2	24,0	M10x14,5	5
1604012	40x1,5-2	24,0	M12x14,5	5
1604208	42x1,5-2	24,0	M8x14,5	5
1604210	42x1,5-2	24,0	M10x14,5	5
1604212	42x1,5-2	24,0	M12x14,5	5

Plugs with thread | Threaded plugs, square with brass insert



Square threaded plugs

Material: PA 6
Colour: black

with brass insert
max. kg = max. load capacity

Part no.	D1	D2	d	H	L	max.kg
6426820208	20x20x1,5	17	M8	5	23	450
6426825208	25x25x1,5	22	M8	6	26	450
6426825210	25x25x1,5	22	M10	6	26	500
6426825212	25x25x1,5	22	M12	6	26	550
6426830210	30x30x1,5	27	M10	6	31	500
6426830212	30x30x1,5	27	M12	6	31	550
6426830214	30x30x1,5	27	M14	6	31	600
6426830216	30x30x1,5	27	M16	6	31	650

Part no.	D1	D2	d	H	L	max.kg
6426835210	35x35x1,5	32	M10	8	38	700
6426835212	35x35x1,5	32	M12	8	38	750
6426835214	35x35x1,5	32	M14	8	38	800
6426835216	35x35x1,5	32	M16	8	38	850
6426835220	35x35x1,5	32	M20	8	38	900
6426840210	40x40x1,5	37	M10	8	38	750
6426840212	40x40x1,5	37	M12	8	38	800
6426840214	40x40x1,5	37	M14	8	38	850

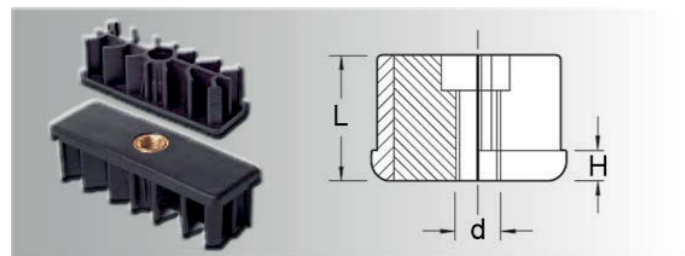
Part no.	D1	D2	d	H	L	max.kg
6426840216	40x40x1,5	37	M16	8	38	900
6426840220	40x40x1,5	37	M20	8	38	950
6426840310	40x40x2	36	M10	8	38	750
6426840312	40x40x2	36	M12	8	38	800
6426840314	40x40x2	36	M14	8	38	850
6426840316	40x40x2	36	M16	8	38	900
6426840320	40x40x2	36	M20	8	38	950
6426850212	50x50x1,5	47	M12	10	45	800

Part no.	D1	D2	d	H	L	max.kg
6426850214	50x50x1,5	47	M14	10	45	850
6426850216	50x50x1,5	47	M16	10	45	900
6426850220	50x50x1,5	47	M20	10	45	950
6426850312	50x50x2	46	M12	10	45	800
6426850314	50x50x2	46	M14	10	45	850
6426850316	50x50x2	46	M16	10	45	900
6426850320	50x50x2	46	M20	10	45	950

Part no.	D1	D2	d	H	L	max.kg
6426438216	38,0	35,0	M16	8	38	650
6426442210	42,4	39,4	M10	8	38	700
6426442212	42,4	39,4	M12	8	38	750
6426442214	42,4	39,4	M14	8	38	800
6426442216	42,4	39,4	M16	8	38	850
6426442220	42,4	39,4	M20	8	38	900
6426448212	48,3	45,3	M12	10	45	800
6426448214	48,3	45,3	M14	10	45	850
6426448216	48,3	45,3	M16	10	45	900
6426448220	48,3	45,3	M20	10	45	950
6426460410	60,3	55,3	M10	12	52	750

Part no.	D1	D2	d	H	L	max.kg
6426460412	60,3	55,3	M12	12	52	800
6426460414	60,3	55,3	M14	12	52	850
6426460416	60,3	55,3	M16	12	52	900
6426460420	60,3	55,3	M20	12	52	950
6426460424	60,3	55,3	M24	12	52	1000
6426460310	60,3	56,3	M10	12	52	750
6426460312	60,3	56,3	M12	12	52	800
6426460314	60,3	56,3	M14	12	52	850
6426460316	60,3	56,3	M16	12	52	900
6426460320	60,3	56,3	M20	12	52	950
6426460324	60,3	56,3	M24	12	52	1000

Plugs with thread | Threaded plugs, rectangular with brass insert



Rectangular threaded plug

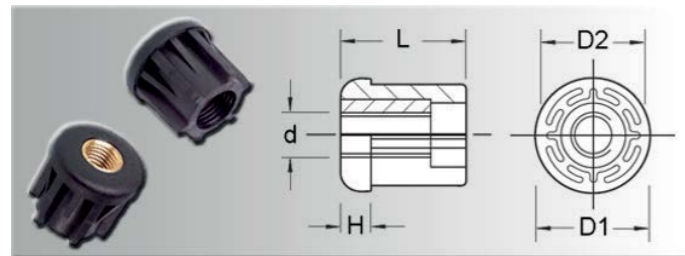
Material: PA 6
Colour: black

with brass insert
max. kg = max. load capacity

Part no.	AxS	d	H	L	max.kg
6428220308	20x50x2	M8	5	28	450
6428230308	30x60x2,5	M8	8	38	450
6428230310	30x60x2,5	M10	8	38	500
6428230312	30x60x2,5	M12	8	38	550
6428230316	30x60x2,5	M16	8	38	650
6428240316	40x80x2	M16	10	45	900
6428240320	40x80x2	M20	10	45	950
6428250302	50x100x2	M16	10	45	900

Part no.	AxS	d	H	L	max.kg
6428250303	50x100x2	M20	10	45	950
6428250305	50x100x3	M16	10	45	900
6428250306	50x100x3	M20	10	45	950
6428250316	50x150x3	M16	10	45	900
6428250320	50x150x3	M20	10	45	950
6428260316	60x120x3	M16	10	45	900
6428260320	60x120x3	M20	10	45	950

Plugs with thread | Threaded plugs, round with brass insert



Round threaded plugs

Material: PA 6
Colour: black

with brass insert
max. kg = max. load capacity

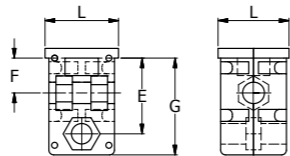
Part no.	D1	D2	d	H	L	max.kg
6426430108	30,0	28,0	M8	6	31	450
6426430110	30,0	28,0	M10	6	31	500
6426430112	30,0	28,0	M12	6	31	550
6426430114	30,0	28,0	M14	6	31	600

Part no.	D1	D2	d	H	L	max.kg
6426430116	30,0	28,0	M16	6	31	650
6426438210	38,0	35,0	M10	8	38	500
6426438212	38,0	35,0	M12	8	38	550
6426438214	38,0	35,0	M14	8	38	600

Horizontal Inserts for Square Tubes

SR 5731
Nylon

- Horizontal inserts with various options for joining square tubes



Type 1 - 2 level, 4 direction



Type 2 - 1 level, 2 direction



Type 3 - 2 level, 4 direction, top thread



Type 4 - 2 level, 4 direction, bottom thread



Type 5 - 2 level, 4 direction, 2 threads

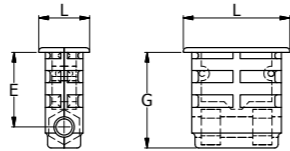
Part Number	Dimensions (mm)							Number of Nuts	Standard Pack Quantity
	L	Thread Size	Type	Wall Thickness	E	F	G		
499229	25 x 25	M8	1	1.5	12.5	27	43	0	600
499230	25 x 25	M10	1	1.5	12.5	30	42	0	350
499231	30 x 30	M10	1	1.25	15	33	43	0	200
499232	30 x 30	M8	1	1.5	15	32	40	0	150
499233	30 x 30	M8	1	2	15	33	41	0	250
499234	30 x 30	M10	1	2	15	33	43	0	250
499245**	40 x 40	M10	2	2	25	-	40	1	100
499246**	40 x 40	M12	2	2	25	-	40	1	50
499238	25 x 25	M8	3	1.5	12.5	27	43	1	100
499239 *	25 x 25	M8	3	1.5	12.5	27	43	1	100
499240	25 x 25	M10	3	1.5	12.5	30	42	1	100
499241	30 x 30	M10	3	1.25	15	33	43	1	100
499242	30 x 30	M8	3	1.5	15	32	40	1	100
499244	30 x 30	M10	3	2	15	33	43	1	100
499247	25 x 25	M8	4	1.5	12.5	27	43	1	100
499250	30 x 30	M8	4	2	15	33	41	1	100
499251	30 x 30	M10	4	2	15	33	43	1	50
499252	25 x 25	M8	5	1.5	12.5	27	43	2	100
499253	25 x 25	M10	5	1.5	12.5	30	42	2	100
499256	30 x 30	M10	5	2	15	33	43	2	50

*With DIN 985 locknut **Domed Head

Horizontal Inserts for Square Tubes

SR 1421
Nylon

- Horizontal inserts with various options for joining rectangular tubes



Type 1 - 1 level, 2 direction



Type 2 - 1 level, 2 direction, top thread



Type 3 - 1 level, 2 direction, bottom thread



Type 4 - 1 level, 2 direction, 2 threads

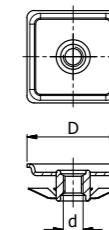
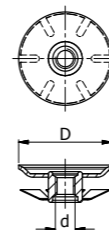
Part Number	Dimensions (mm)							Number of Nuts	Standard Pack Quantity
	L	Thread Size	Type	Wall Thickness	E	F	G		
499258	40 x 20	M8	1	1.5	30	-	41	0	200
499259	40 x 25	M8	1	1.5	30	-	41	0	150
499260	45 x 25	M10	1	2	20	-	39	0	100
499262	50 x 30	M10	1	1.5	30	-	32	0	250
499264	60 x 30	M10	1	2	20	-	33	0	100
499265	30 x 20	M8	2	1.5	15	-	37	1	100
499266*	30 x 20	M8	2	2	15	-	36	1	100
499268	40 x 20	M8	3	1.5	30	-	41	1	100
499271	40 x 25	M8	3	1.5	30	-	41	1	100
499274	50 x 30	M10	3	1.5	30	-	42	1	100
499275*	50 x 30	M10	3	2	20	-	31	1	100
499276	60 x 30	M10	3	2	20	-	33	1	100
499277	30 x 20	M8	4	1.5	15	-	37	2	100
499278	40 x 20	M8	4	1.5	30	-	41	2	100
499279	40 x 25	M8	4	1.5	30	-	41	2	100
499280	45 x 25	M10	4	2	20	-	39	2	100
499281*	50 x 25	M10	4	2	20	-	32	2	100
499282	50 x 30	M10	4	1.5	30	-	42	2	50
499284	60 x 30	M10	4	2	20	-	33	2	50

* Domed Head

Spring Threaded Insert

SR 1430

- Spring loaded insert for round and square tubes
- Quick fit application



Round

Part Number	D (mm)	Thread Size (d)	Gauge (mm)	Standard Pack Quantity
499455	19.0	M6	1.0	200
499456	22.0	M6	1.0	200
499457	25.0	M6	1.0	200
551836	51.0	M6	1.2	200
499458	25.0	M8	1.2	200
499460	32.0	M8	1.2	200
499461	38.0	M8	1.2	200
551837	51.0	M8	1.2	200
551838	25.0	M10	1.2	200
499463	32.0	M10	1.5	200
499464	38.0	M10	1.5	200
551839	51.0	M10	1.5	200

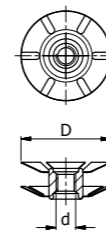
Square

Part Number	D (mm)	Thread Size (d)	Gauge (mm)	Standard Pack Quantity
499465	19 x 19	M6	1.0	200
499466	22 x 22	M6	1.0	200
499467	25 x 25	M6	1.0	200
551845	25 x 25	M8	1.2	200
499470	32 x 32	M8	1.2	200
499471	38 x 38	M8	1.2	200
551842	22 x 22	M10	1.5	200
551843	25 x 25	M10	1.5	200
499473	32 x 32	M10	1.5	200
499474	38 x 38	M10	1.5	200

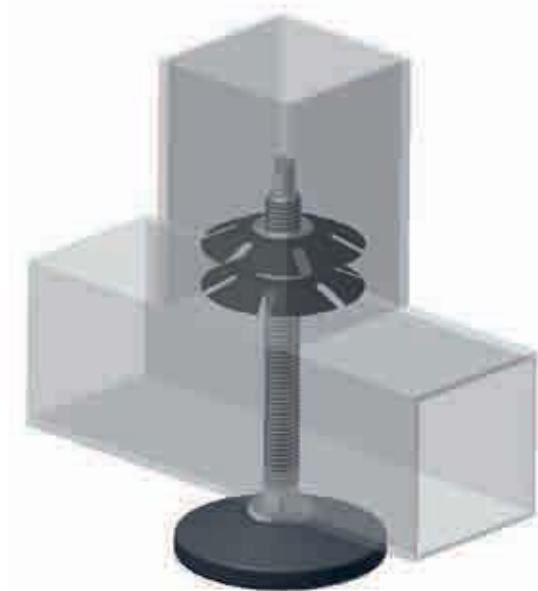
Spring Threaded Tube Connectors

SR 1430

- Knock-in insert for connecting tubes
- Threaded for secure screw fixing



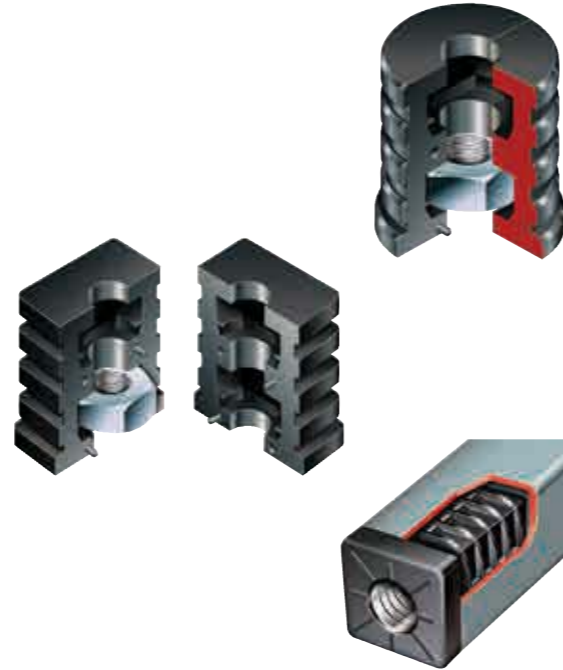
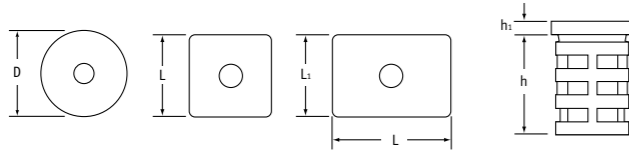
Part Number	D (mm)	Thread Size (d)	Gauge (mm)	Standard Pack Quantity
499444	19	M6	1.0	200
499445	22	M6	1.0	200
499446	25	M6	1.0	200
499447	25	M8	1.2	200
499449	32	M8	1.2	200
499450	38	M8	1.2	200
499451	25	M10	1.5	200
499453	32	M10	1.5	200
499454	38	M10	1.5	200
551835	51	M10	1.5	200



Metal-Threaded Inserts

SR 1571
Black Nylon 6 or HDPE

- Heavy-duty insert
- Ideal for use with adjustable feet, tilt glides and castors
- M8 or M10 thread with mild steel holding nut provides strong fixing
- Metal thread allows smooth repeatable adjustment
- Two-piece mouldings fit neatly together to fit into tubes



Nylon Round Inserts (two piece moulding)

Part Number	Thread Size	Dimensions (mm)				Standard Pack Quantity
		Gauge	D	h1	h	
461361	M8	1.5	25	5	35	750
461367	M8	2.0	30	5	35	500
461368	M8	2.0	32	5	35	500
461369	M8	2.0	40	5	35	300
461362	M10	1.5	25	5	35	600
461370	M10	2.0	30	5	35	500
461371	M10	2.0	32	5	35	500
461363	M10	1.5	35	5	35	350
461372	M10	2.0	35	5	35	300
461364	M10	1.5	38	5	38	300
461365	M10	1.5	40	5	34	300
461373	M10	2.0	40	5	35	300
461366	M10	1.5	50	5	35	200
461374	M10	2.0	50	5	35	200

Nylon Square Inserts (two piece moulding)

Part Number	Thread Size	Dimensions (mm)				Standard Pack Quantity
		Gauge	L	h1	h	
461351	M8	1.5	20	5	35	500
461352	M8	1.5	25	5	35	500
461353	M8	1.5	30	5	35	400
461357	M8	2.0	30	5	35	400
461354	M10	1.5	25	5	35	500
461355	M10	1.5	30	5	35	400
461358	M10	2.0	30	5	35	400
461359	M10	2.0	35	5	35	400
461356	M10	1.5	40	5	37	320
461360	M10	2.0	40	5	35	320

Nylon Rectangular Inserts (two piece moulding)

Part Number	Thread Size	Dimensions (mm)				Standard Pack Quantity
		Gauge	L x L1	h1	h	
461375	M8	1.5	40 x 20	5	35	500
461376	M10	2.0	50 x 25	5	35	350

HDPE Square Inserts

Part Number	Dimensions (mm)			Standard Pack Quantity
	L	Gauge	Thread Size	
PZMN300-1020M08	30	1.0 - 2.0	M8	500
PZMN300-1020M10	30	1.0 - 2.0	M10	500
PZMN400-RM10B	40	1.0 - 2.0	M10	250

HDPE Round Inserts

Part Number	Dimensions (mm)		Thread Size	Standard Pack Quantity
	D	Gauge		
PZMR250-15RM10B	25	1.5	M10	500

Extra Long HDPE Square Inserts

Part Number	Dimensions (mm)			Thread Size	Standard Pack Quantity
	L	Gauge	h		
PZML250-RM08B	25	1.0 - 2.0	5	M8	500
PZML250-RM10B	25	1.0 - 2.0	5	M10	250
PZML300-RM10B	30	1.0 - 2.0	5	M10	250

Threaded Metal Bush HDPE Square Inserts

Part Number	Dimensions (mm)			Thread Size	Standard Pack Quantity
	L	Gauge	h		
PZMS200-RM08B	20 x 20	1.0 - 2.0	5	M8	1000
PZMS250-RM08B	25 x 25	1.0 - 2.0	5	M8	500
PZMS250-RM10B	25 x 25	1.0 - 2.0	5	M10	500

All-Metal Threaded Inserts

SR 1567
Cast Aluminium Alloy

- For heavy-duty applications



Round (Metric)

Part Number	Tube Size (mm)	Gauge (mm)	Thread Size	Standard Pack Quantity
PZAR320-15M10	32	1.5	M10	500
PZAR320-2M10	32	2.0	M10	500

Square (Metric)

Part Number	Tube Size (mm)	Gauge (mm)	Thread Size	Standard Pack Quantity
PZAS250-15M10	25 x 25	1.5	M10	400
PZAS250-2M10	25 x 25	2.0	M10	400
PZAS300-15M10	30 x 30	1.5	M10	400
PZAS300-2M10	30 x 30	2.0	M10	400
PZAS400-15M10	40 x 40	1.5	M10	200
466585	40 x 40	2.0	M10	100
466584	40 x 40	2.5	M10	100

Rectangular (Metric)

Part Number	Tube Size (mm)	Gauge (mm)	Thread Size	Standard Pack Quantity
PZAT500250-2M10	50 x 25	2.0	M10	300
PZAT500300-2M10	50 x 30	2.0	M10	250
PZAT600300-2M10	60 x 30	2.0	M10	200
PZAT600300-25M1	60 x 30	2.5	M10	200

All-Metal Threaded Inserts - steel

SR 1567
Steel

- For heavy-duty applications



Round (Imperial)

Part Number	Tube Size (mm)	Tube Size (ins)	Gauge (mm)	Gauge (ins)	Thread Size	Standard Pack Quantity	
PZFR254-16M10	25.4	1	1.6	1/16	16	M10	500
PZFR317-16M10	31.7	1 1/4	1.6	1/16	16	M10	250

Square (Imperial)

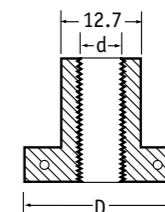
Part Number	Tube Size (mm)	Tube Size (ins)	Gauge (mm)	Gauge (ins)	Thread Size	Standard Pack Quantity	
PZFL254-18M08*	25.4 x 25.4	1 x 1	1.2	1/8	18	M8	500
PZFS254-16M10	25.4 x 25.4	1 x 1	1.6	1/16	16	M10	250

*Light-duty style threaded, no bush.

Hinged Threaded Insert

SR 1570
Black Nylon 6

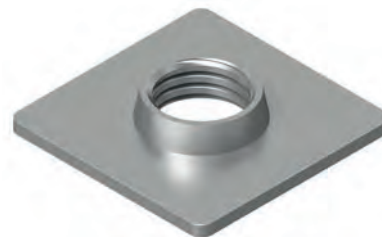
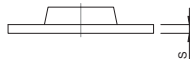
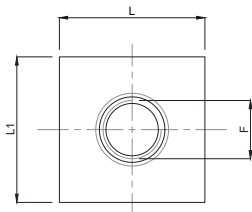
- Insert into metal panel
- Use in conjunction with M8 adjustable foot or tilt glide



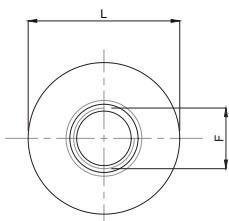
Part Number	Dimensions (mm)		Standard Pack Quantity
	d	D	
199479	8	20	5000

Caratteristiche: PIASTRINE INOX A SALDARE

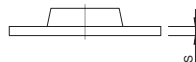
Features: ST STEEL WELDING PLATES



CODICE CODE	L	L1	S	F	CARICO STATICO STATIC LOAD NEWTON
PI17487	35	35	3	M8	5000
PI17488	35	35	3	M10	5000
PI17489	35	35	3	M12	5000
PI17490	35	35	3	M16	8000
PI17491	35	35	3	M20	10000
PI17497	40	40	3	M8	5000
PI17498	40	40	3	M10	5000
PI17499	40	40	3	M12	5000
PI17500	40	40	3	M16	8000
PI17501	40	40	3	M20	10000
PI17507	50	50	3	M8	5000
PI17508	50	50	3	M10	5000
PI17509	50	50	3	M12	5000
PI17510	50	50	3	M16	8000
PI17511	50	50	3	M20	10000
PI17517	60	60	3	M8	5000
PI17518	60	60	3	M10	5000
PI17519	60	60	3	M12	5000
PI17520	60	60	3	M16	8000
PI17521	60	60	3	M20	10000
PI17529	60	40	3	M12	5000
PI17530	60	40	3	M16	8000
PI17531	60	40	3	M20	10000
PI17539	80	40	3	M12	5000
PI17540	80	40	3	M16	8000
PI17541	80	40	3	M20	10000
PI17549	100	40	3	M12	5000
PI17550	100	40	3	M16	8000
PI17551	100	40	3	M20	10000
PI17559	100	50	3	M12	5000
PI17560	100	50	3	M16	8000
PI17561	100	50	3	M20	10000



PIASTRINA IN INOX A SALDARE TONDA
ROUND STAINLESS STEEL WELDING PLATE



CODICE CODE	L	S	F	CARICO STATICO STATIC LOAD NEWTON	CODICE CODE	L	S	F	CARICO STATICO STATIC LOAD NEWTON
PI17562	40	3	M8	5000	PI17580	48	3	M16	8000
PI17563	40	3	M10	5000	PI17581	48	3	M20	10000
PI17564	40	3	M12	5000	PI17587	50	3	M8	5000
PI17565	40	3	M16	8000	PI17588	50	3	M10	5000
PI17566	40	3	M20	10000	PI17589	50	3	M12	5000
PI17567	42	3	M8	5000	PI17590	50	3	M16	8000
PI17568	42	3	M10	5000	PI17591	50	3	M20	10000
PI17569	42	3	M12	5000	PI17597	60	3	M8	5000
PI17570	42	3	M16	8000	PI17598	60	3	M10	5000
PI17571	42	3	M20	10000	PI17599	60	3	M12	5000
PI17577	48	3	M8	5000	PI17600	60	3	M16	8000
PI17578	48	3	M10	5000	PI17601	60	3	M20	10000
PI17579	48	3	M12	5000					