

Magneti Magnets

METALIKA KACIN

Slovenija

(+386) 04 510 53 60

info@metalika-kacin.com

Hrvatska

(+385) 051 213 060

hrvatska@metalika-kacin.com

Srbija

(+381) 011 25 21 756

srbija@metalika-kacin.com

Retaining magnets / Raw magnets

Application / Designs / Structure / Materials of the magnets

Application

Magnets are simple elements that help make solving tasks easier, more efficient, and more reliable.

If drilling is not allowed for fastening, for instance, so as not to damage corrosion protection layers, a retrofit/portable installation is desired, or only a temporary fix is required, this product group offers a large selection of suitable magnets.

Designs

There are seven different magnet types based on a conceptual classification with respect to the shape and function:

Button-type magnets and U-magnets as well as retaining magnets that are disc-shaped or rod-shaped form the largest group along with screws with retaining magnet. The name retaining magnet bears such elements that are used for direct fastening. Raw magnets generally help to structure application-specific magnetic systems.

Structure

Apart from button-type magnets / U-magnets and raw magnets, magnetic systems can also be used. Due to their structure, they have only one magnetic contact surface. Through magnetic return plates, the entire magnetic energy is concentrated on the attracting surface and the spatial effect of the magnetic field is restricted in order to prevent any magnetization of the environment.

Materials of the magnet

Within various designs, various materials of the magnet are available to choose from. In order to meet application-specific conditions in as far as possible, the most important characteristics of the respective materials of the magnet are given in the following table.

Materials of the magnet in comparison

Description	Hard ferrite (HF)	AlNiCo (AN)	SmCo (SC)	NdFeB (ND)
Adhesive force	strong	medium	strong	very strong
Max. working temperature *	≈ 200 °C	≈ 450 °C	≈ 200 °C	≈ 80 °C
Adhesive force on heating	lower	constantly good	lower	lower
Corrosion resistance	very good	very good	good	nickel plated - good
Made from	Iron oxide	Aluminum, nickel, cobalt and iron	Samarium and cobalt	Neodymium, iron and boron
Production method	Sintering	Sintering, casting	Sintering	Sintering
Mechanical properties	very hard, brittle	very hard, tough	very hard, brittle	very hard, brittle
Machineability	not possible	diamond grinding possible	not possible	not possible
Demagnetisation capability	moderate, by demagnetising fields	easy, by demagnetising fields	very difficult, only by large demagnetising	difficult, only by large demagnetising
Price	very reasonable	high	very high	reasonable

* The max. temperature used is only a guide value because it also depends on the dimensions of the magnet.

Retaining magnets / Raw magnets

Adhesive force / Influence factors

Adhesive force

In addition to their shape and material, the actual achievable adhesive force of the magnets depends on several other factors.

Influence factors																													
Air gap An air gap or materials, which are not magnetically permeable between the work piece and the magnet, have an insulating effect on the magnetic flux. The adhesive force is reduced depending on the distance.																													
Work piece thickness A minimum thickness of the work piece should be maintained in order to not restrict the magnetic flux and therefore the adhesive force.																													
Material Steel and ferrous materials with a low proportion of carbon and alloyed materials promote the magnetic flux. Similarly, non-hardened work pieces conduct the magnetic flux better, which enables greater adhesive forces.	<table border="1"> <tbody> <tr> <td>100%</td> <td>technical pure iron</td> <td>86%</td> <td>C60, X6Cr17</td> </tr> <tr> <td>95%</td> <td>St37, C15</td> <td>84%</td> <td>42CrMo4</td> </tr> <tr> <td>94%</td> <td>St44-2, 34CrNiMo6</td> <td>75%</td> <td>St50</td> </tr> <tr> <td>93%</td> <td>St52-3</td> <td>72%</td> <td>X155CrMo12</td> </tr> <tr> <td>92%</td> <td>90MnV8</td> <td>65%</td> <td>X210CrW12</td> </tr> <tr> <td>90%</td> <td>C45</td> <td>50%</td> <td>20MnCr5</td> </tr> <tr> <td>87%</td> <td>Ck45</td> <td>30%</td> <td>GG</td> </tr> </tbody> </table>	100%	technical pure iron	86%	C60, X6Cr17	95%	St37, C15	84%	42CrMo4	94%	St44-2, 34CrNiMo6	75%	St50	93%	St52-3	72%	X155CrMo12	92%	90MnV8	65%	X210CrW12	90%	C45	50%	20MnCr5	87%	Ck45	30%	GG
100%	technical pure iron	86%	C60, X6Cr17																										
95%	St37, C15	84%	42CrMo4																										
94%	St44-2, 34CrNiMo6	75%	St50																										
93%	St52-3	72%	X155CrMo12																										
92%	90MnV8	65%	X210CrW12																										
90%	C45	50%	20MnCr5																										
87%	Ck45	30%	GG																										
Work piece surface Excessive roughness or unevenness have the same effect as an air gap. They reduce the adhesive force.																													
Displacement force The displacement force corresponds to the frictional force and depends on the coefficient of friction between the magnet and the work piece, as well as the adhesive force of the magnet. Due to their higher coefficient of friction, rubberized magnet systems have greater displacement forces.																													

The nominal adhesive forces stated in the tables in the standards are minimum values, which are achieved at room temperature, vertical „pull-off“ and full contact of the magnets with low carbon steel work pieces and a minimum thickness of 10 mm.


16-7-4***
Sealed magnetic catches



INOX
STAINLESS STEEL

page 266-267

16-7-4***
Compact magnetic catches



INOX
STAINLESS STEEL

page 268-269


16-7-****
Screw-on magnetic catches



INOX
STAINLESS STEEL

page 270-276

16-7-****
Snap-in magnetic catches



page 277-278

16-7-3***
Flush magnetic catches



page 279-281

16-7-368*
Self-adhesive magnetic profile




page 282

GN 50.1
Retaining magnets
disc-shaped,
without thread




page 2024

GN 50.2
Retaining magnets
disc-shaped,
with female thread



page 2025

GN 50.3
Retaining magnets
disc-shaped,
with threaded stud



page 2026

GN 50.25
Stainless Steel- Retaining magnets
disc-shaped,
with female thread



INOX
STAINLESS STEEL

page 2026

GN 50.4
Retaining magnets
disc-shaped, with bore
or female thread



page 2027

GN 50.45
Stainless Steel- Retaining magnets
disc-shaped, with bore



INOX
STAINLESS STEEL

page 2028

GN 50.6
Retaining magnets
disc-shaped,
with hook / with eyelet



page 2029

GN 50.5
Retaining magnets
disc-shaped,
with female thread




page 2030

GN 58
Pot magnets
with bore




page 2030

GN 51.5
Retaining magnets
disc-shaped,
with female thread,
with rubber jacket



page 2031

GN 51.4
Retaining magnets
disc-shaped, with bore,
with rubber jacket



page 2032

GN 51.6
Retaining magnets
disc-shaped,
with 2 female thread,
with rubber jacket



page 2032

GN 51.2
Retaining magnets
disc-shaped,
with female thread,
with rubber jacket



page 2033

GN 51.3
Retaining magnets
disc-shaped,
with threaded stud,
with rubber jacket



page 2034

GN 54.1
Retaining magnets
rod-shaped,
without bore



page 2035

GN 52.1
Retaining magnets
rod-shaped,
without bore




page 2036

GN 52.2
Retaining magnets
rod-shaped,
with female thread



page 2038

GN 52.4
Retaining magnets
rod-shaped,
with threaded stud




page 2039

GN 52.3
Retaining magnets
rod-shaped,
with female thread



page 2040


GN 52.5
Stainless Steel- Retaining magnets
rod-shaped,
with gummed adhesive
surface



INOX
STAINLESS STEEL

page 2040

GN 60
Button-type magnets
with bore



page 2041

GN 62
U-Magnets
with bore



page 2041

GN 53.1
Magnets




page 2042

GN 51.7
Magnets
with ball knob / with key
ring, with rubber jacket




page 2043

GN 251.6
Setting bolts
with retaining magnet



page 2044

GN 913.6
Grub screws
with retaining magnet




page 2045

GN 55.1
Raw magnets
disc-shaped, with bore
or countersunk



page 2046

GN 55.2
Raw magnets
disc-shaped,
without bore



page 2047

GN 55.3
Raw magnets
rod-shaped




page 2048

GN 55.4
Raw magnets
block-shaped



page 2049

GN 56
Retaining magnets
for profile systems



INOX
STAINLESS STEEL

page 2050

GN 70
Holding discs
Steel



page 2051


GN 70-NI
Holding discs
Stainless Steel



INOX
STAINLESS STEEL

page 2051

GN 70.1
Adhesive discs
self-adhesive,
for retaining magnets



page 2051

C246
Magnetic catches
For wooden doors

page 2052-2057

C***
Magnetic catches
For metal and glass doors

page 2058-2061



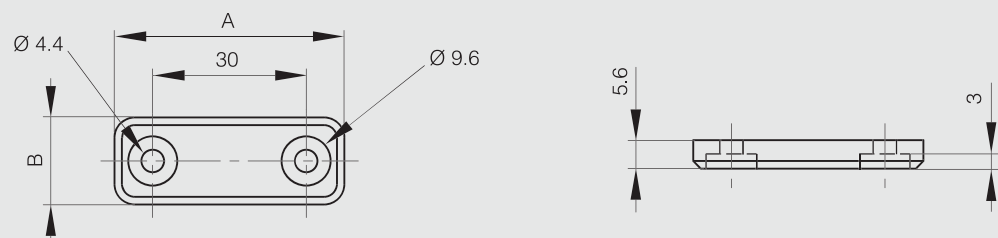
Sealed magnetic catches

Sealed compact magnetic catch

This part number is associated with counterplate 16-7-4205.



Part number	Material	Finish	A	B	Force	Weight (g)
16-7-4204	polymer	white	45	17	3kg	9

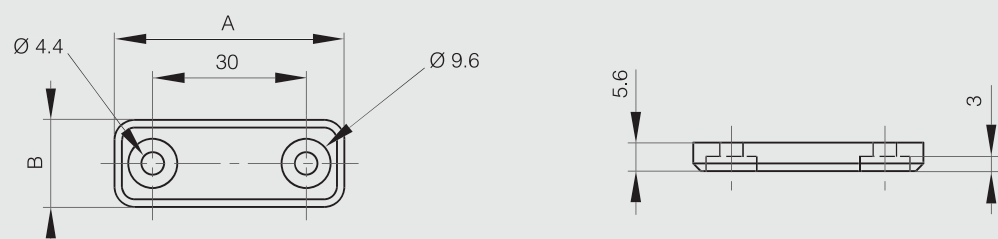


Counterplate for sealed magnetic catch 16-7-4204

This counterplate has the same dimensions as the part listed above. It has a blue dot on the backside to differentiate it from the catch.



Part number	Material	Finish	A	B	Weight (g)
16-7-4205	polymer	white	45	17	9



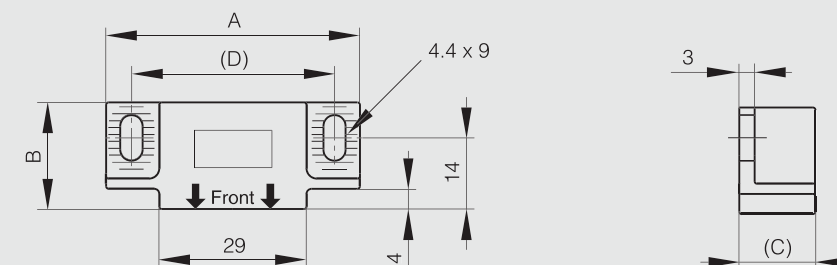
Sealed magnetic catches

Sealed magnetic catch

Strike sold separately.



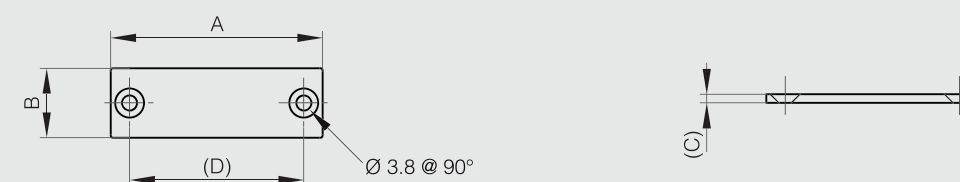
Part number	Material	Finish	A	B	C	D	Force	Weight (g)
16-7-4081	polymer	white	50	21	13	40	3kg	21
16-7-4206	polymer	black	50	21	13	40	3kg	21



Counterplate for sealed magnetic catch 16-7-4081 and 16-7-4206



Part number	Material	Finish	A	B	C	D	Weight (g)
16-7-4082	430 Ti stainless steel	raw	49	15	2	40	10





Compact magnetic catches

Ultra thin compact magnetic catch

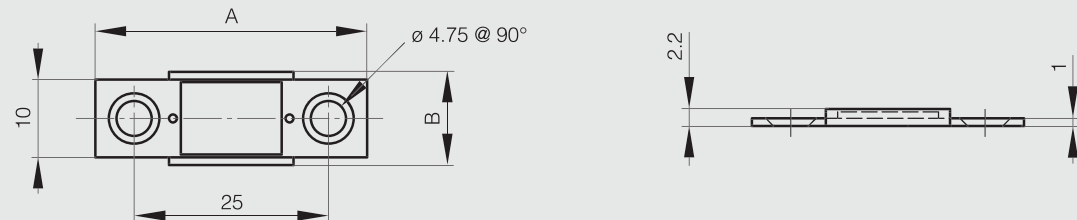
Suitable for temperatures below 80°C.

To avoid breakage, counterplate should not contact the magnet.

Screw heads should not protrude above the base plate.



Part number	Material	Finish	A	B	Force	Weight (g)
16-7-4033	steel	nickel plated	35	12	2.7kg	4

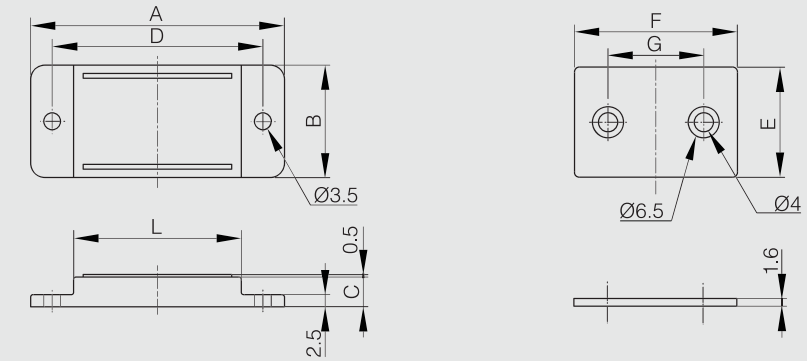


Compact magnetic catches

Low profile magnetic catch



Part number	Material	Finish	A	B	C	D	E	F	G	L	Force	Weight (g)
16-7-4254	ABS	black	43	17	6	34	17	24	13	25	1kg	14
16-7-4255	ABS	black	53	23.5	6.2	44	23	34	20	35	3kg	32
16-7-4256	ABS	black	64	24.5	7	55	24	45	30	46	5kg	48



Compact magnetic catch

Suitable for temperatures below 80°C.

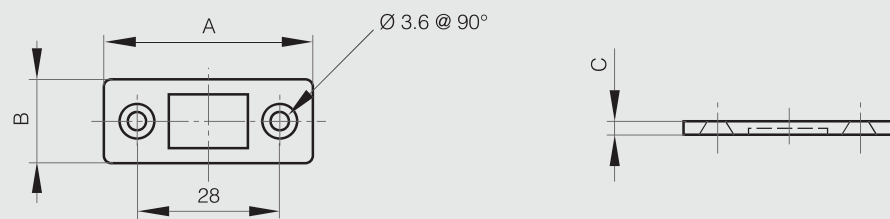
To avoid breakage, counterplate should not contact the magnet.

Screw heads should not protrude above the base plate.

For stainless steel version, magnet is coated with acrylic resin to be corrosion resistant.



Part number	Material	Finish	A	B	C	Force	Weight (g)
16-7-4207	steel	nickel plated	41	16.5	2.6	4kg	12
16-7-4308	steel	nickel plated	41	16.5	3.0	8kg	14
16-7-4309	430 stainless steel	polished	41	16.5	2.8	5kg	13





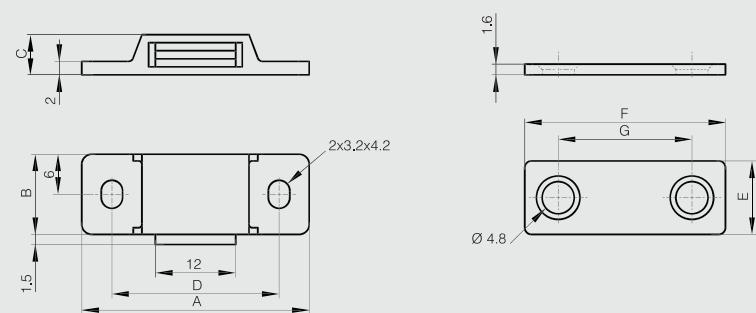
Screw-on magnetic catches

Mini screw-on magnetic catch with counter plate - force 3 kg

Mini magnetic catch is ideal for tight spaces.
Materials: PBT (polymer), steel, neodymium.
Counter plate: steel.
Comes with 4 screws.



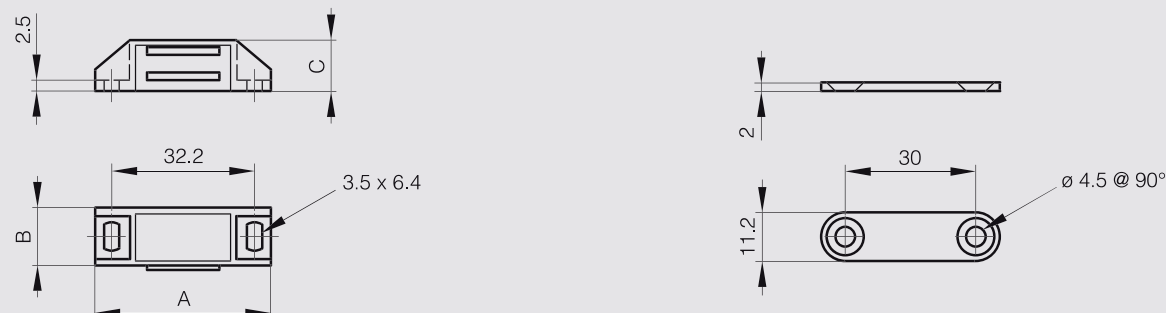
Part number	Material	Finish	A	B	C	D	E	F	G	Force	Weight (g)
16-7-4293	polymer	white	34	12	6	25	11	30	20	3kg	13



Screw-on magnetic catch with counterplate - force 3 kg



Part number	Material	Finish	A	B	C	Force	Weight (g)
16-7-3492	polypropylene	white	39.8	13.7	11.7	2 à 3kg	17

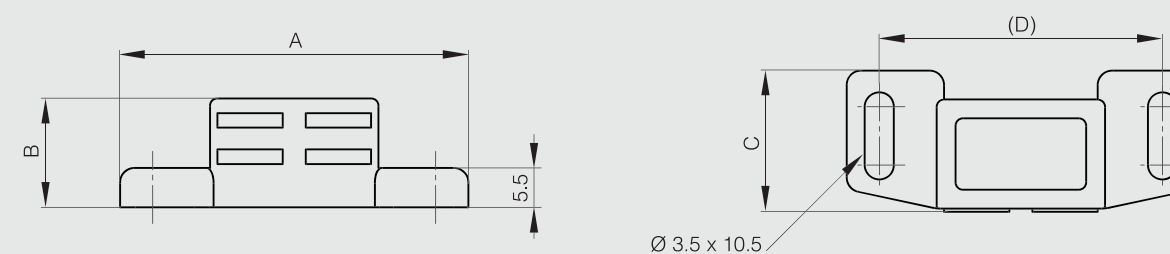


Screw-on magnetic catches

Screw-on magnetic catch without counterplate - force 4 kg



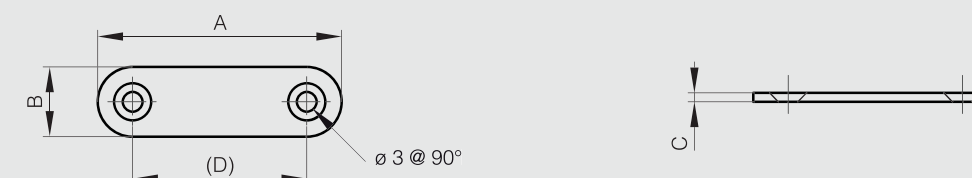
Part number	Material	Finish	A	B	C	D	Force	Weight (g)
16-7-3390	polymer	white	48	15	19.2	38	4kg	13



Counter plate for magnetic catch 16-7-3390



Part number	Material	Finish	A	B	C	D	Weight (g)
16-7-3351	steel	zinc plated	41	14	1.5	31	6



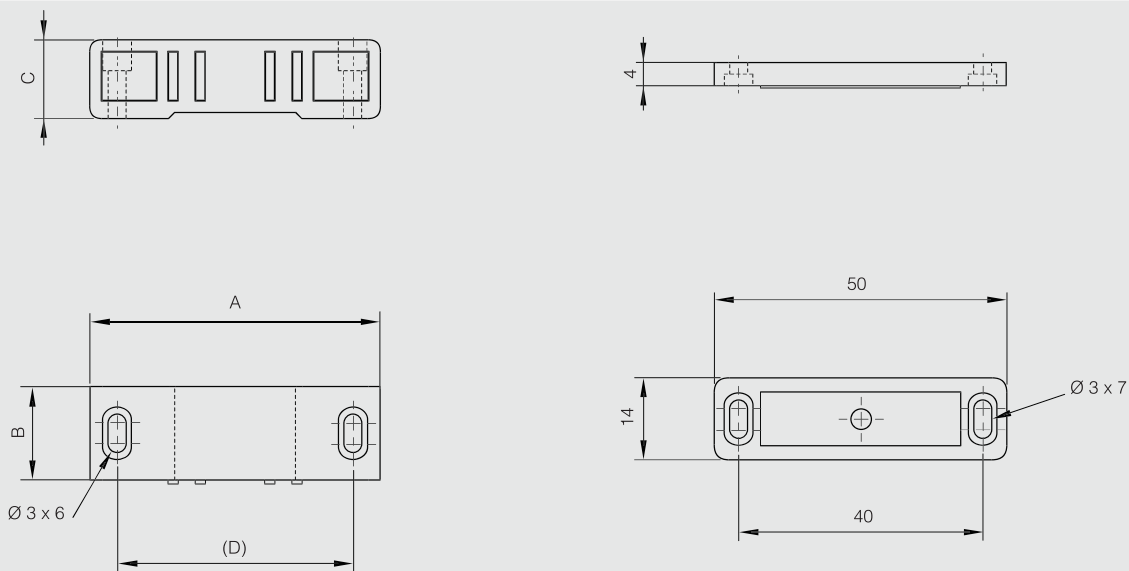


Screw-on magnetic catches

Screw-on magnetic catches with counterplate - force 4 kg



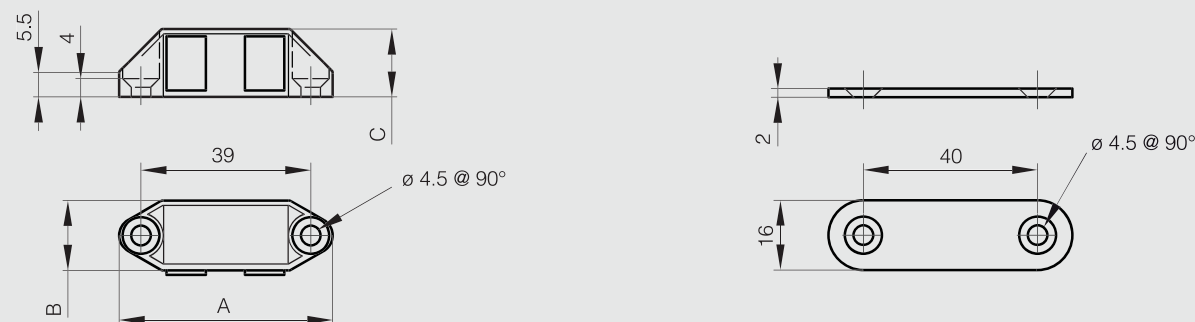
Part number	Material	Finish	A	B	C	D	Force	Weight (g)
16-7-4278	ABS	white	48	15.5	13	37.5	4kg	22



Screw-on magnetic catches with counterplate - force 4 kg - high temperature resistance



Part number	Material	Finish	A	B	C	Force	Note	Weight (g)
16-7-3494	zinc die-cast	nickel plated	49.4	16.4	15.6	4kg	temperature up to 80°C	56
16-7-3610	zinc die-cast	nickel plated	49.4	16.4	15.6	4kg	temperature up to 300°C	56

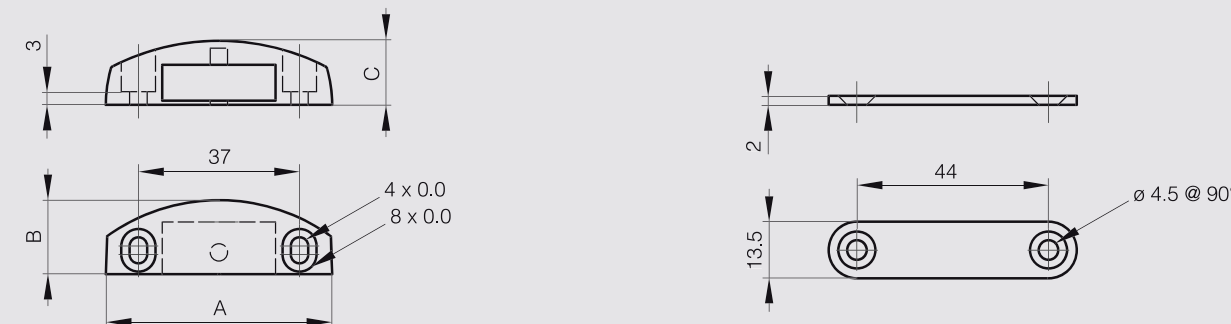


Screw-on magnetic catches

Screw-on magnetic catch with counterplate - force 4 kg



Part number	Material	Finish	A	B	C	Force	Weight (g)
16-7-3483	zinc die-cast	nickel plated	52.2	16	15	4kg	49

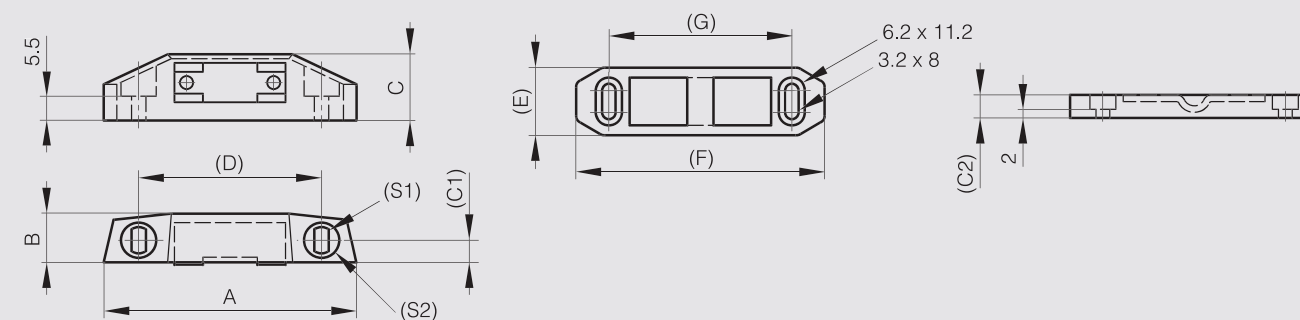


Screw-on magnetic catches with counterplate - force 3 to 6 kg

Forces valid with the related counterplate.



Part number	Material	Finish	A	B	C	C1	C2	D	E	F	G	S1	S2	Force	Weight (g)
16-7-3487	shock polystyrene	white	58	12	15.2	5	5	42	15.5	57	42	3.2x6	8.1	4kg	31
16-7-3488	shock polystyrene	white	62.1	12.6	15.2	6	5.5	45	16.4	62	44.7	3.2x6	8.1	6kg	41



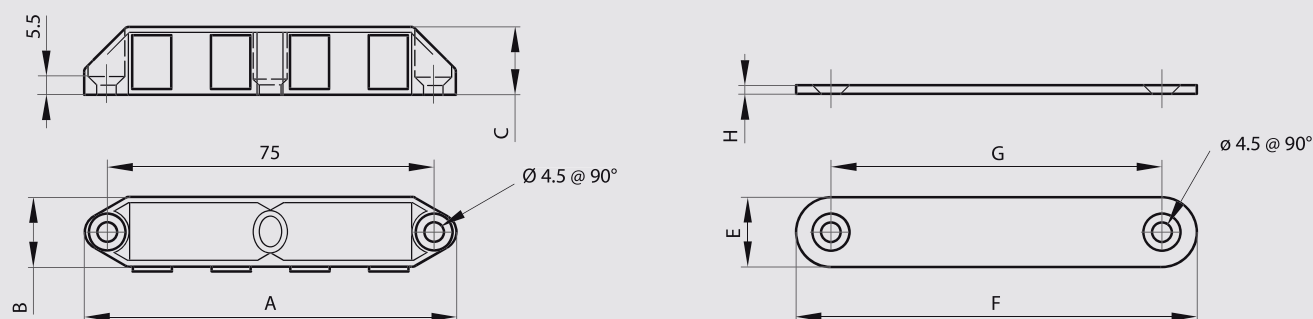


Screw-on magnetic catches

Screw-on magnetic catches with counterplate - force 8 kg - high temperature resistance



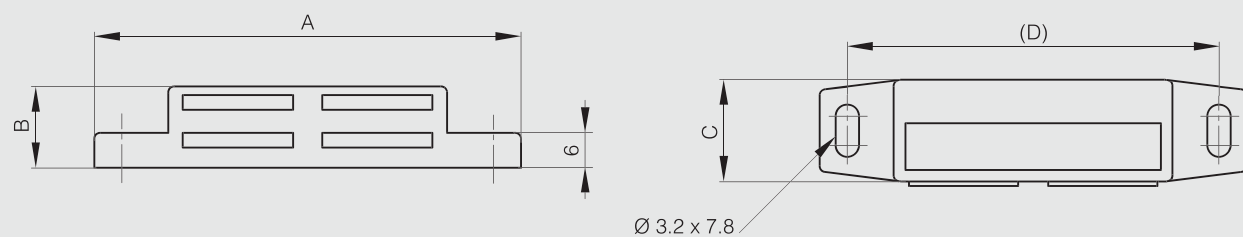
Part number	Material	Finish	A	B	C	E	F	G	H	Force	Note	Weight (g)
16-7-3391	zinc die-cast	nickel plated	86	16.4	15.6	16	92	76	2	8kg	temperature up to 80°C	112
16-7-3611	zinc die-cast	nickel plated	86	16.4	15.6	16	92	76	2	8kg	temperature up to 300°C	112



Screw-on magnetic catch without counterplate - force 12 kg



Part number	Material	Finish	A	B	C	D	Force	Weight (g)
16-7-3672	polypropylene	white	74	14	17.5	64	12kg	37



Screw-on magnetic catches

Counter plate for magnetic catch 16-7-3672



Part number	Material	Finish	A	B	C	D	Weight (g)
16-7-3673	steel	zinc plated	66	12	2	54	11



Screw-on magnetic catch with counter plate - force 7 kg



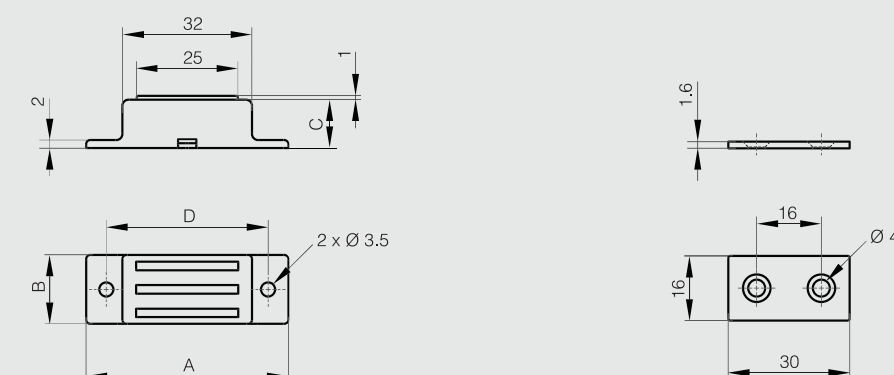
Supplied with counter plate.

Material:

Catch: brass / steel / ferrite / aluminium alloy.

Counter plate: nickel plated steel.

Part number	Material	Finish	A	B	C	D	Force	Weight (g)
16-7-4296	brass	nickel plated	50	17	12	40	7kg	32





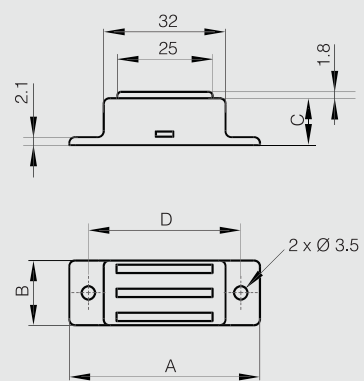
Screw-on magnetic catches

Screw-on magnetic catch without counter plate - force 14 kg

Strong magnetic force.
 Material: 304 stainless steel / steel / neodymium.
 Counter plate not included.
 Produced mainly in stainless steel, for a complete description of the materials contact us.



Part number	Material	Finish	A	B	C	D	Force	Weight (g)
16-7-4297	304 stainless steel	polished	50	17	12.3	40	14kg	41

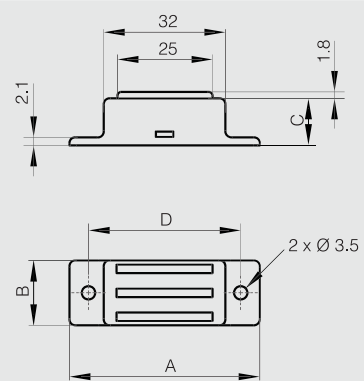


Screw-on magnetic catch without counter plate - force 7 and 14 kg - high temperature resistance

Suitable for high temperature environments up to 250°C.
 Strong magnetic force. Corrosion free.
 Counter plate not included.



Part number	Material	Finish	A	B	C	D	Force	Weight (g)
16-7-4294	304 stainless steel	polished	50	17	12.3	40	7.1kg	40
16-7-4295	304 stainless steel	polished	50	17	12.3	40	14.3kg	40



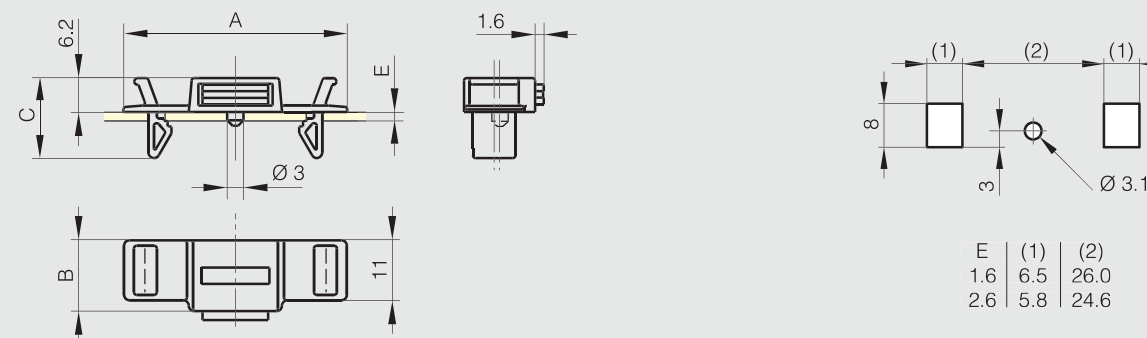
Snap-in magnetic catches

Snap-in magnets without counterplate

Snap-in magnets for sheet metal applications. Suitable for material thicknesses 1.6 mm or 2.6 mm.
 E denotes material thickness.
 Cut-out varies to suit metal thickness.
 Flex-tab for easy removal.



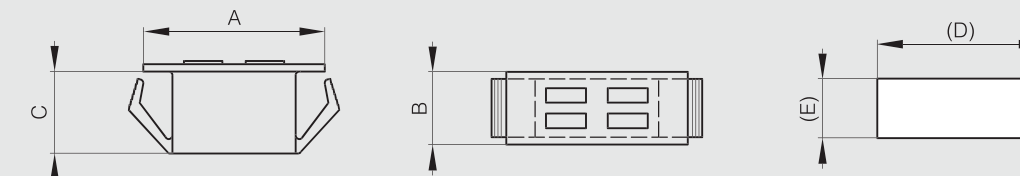
Part number	Material	Finish	A	B	C	Force	Weight (g)
16-7-4209	POM	black	41	13	14.6	3kg	6



Snap-in magnets



Part number	Material	Finish	A	B	C	D	E	Force	Note	Weight (g)
16-7-4013	polypropylene	white	25.5	12.3	10.4	23	11	1.5kg	for sheetmetal thickness 1.5mm	4
16-7-4015	polypropylene	white	39.5	10	11	35	8.2	4kg	for sheetmetal thickness 1.5mm	8
16-7-3674	polypropylene	black	54	12.5	14.5	51.5	10.8	15kg	for sheetmetal thickness 2.0mm	32





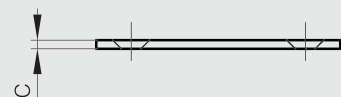
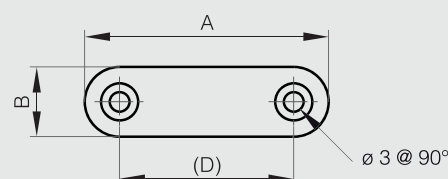
Snap-in magnetic catches

Counterplates for snap-in magnets

Counterplates for part numbers 16-7-4013, 16-7-4015 and 16-7-3674.



Part number	Material	Finish	A	B	C	D	Note	Weight (g)
16-7-3351	steel	zinc plated	41	14	1.5	31	for part number 16-7-4013	6
16-7-3673	steel	zinc plated	66	12	2	54	for part numbers 16-7-3674 and 16-7-4015	11

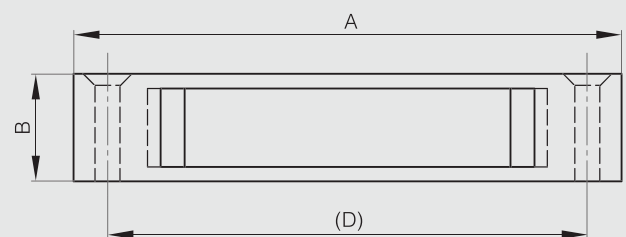


Housing

Housing for part number 16-7-3674.
For screw-mounting.



Part number	Material	Finish	A	B	C	D	Weight (g)
16-7-3675	polypropylene	black	75.5	14.8	18.5	65	8



ø 2.5 @ 90°

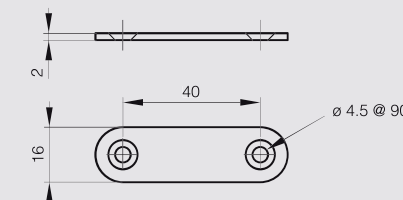
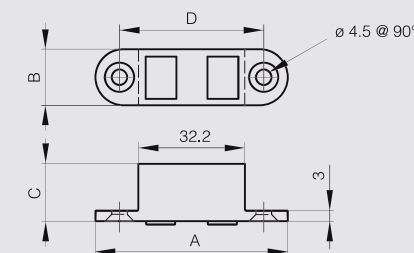


Flush magnetic catches

Flush magnet with high temperature resistance - force 4 kg



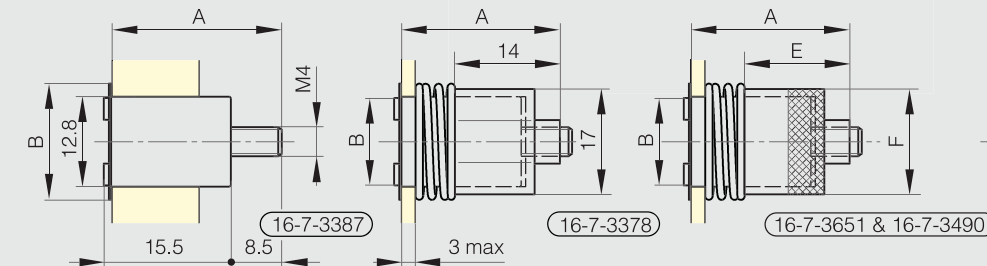
Part number	Material	Finish	A	B	C	D	Force	Note	Weight (g)
16-7-3484	zinc die-cast	nickel plated	56	16.3	16.7	42	4kg	temperature up to 150°C	64



Flush compact magnetic catch without counterplate - force 5 kg



Part number	Material	Finish	A	B	D	Force	Weight (g)
16-7-3387	steel	zinc plated	24	16	13.5	5kg	13



(D)



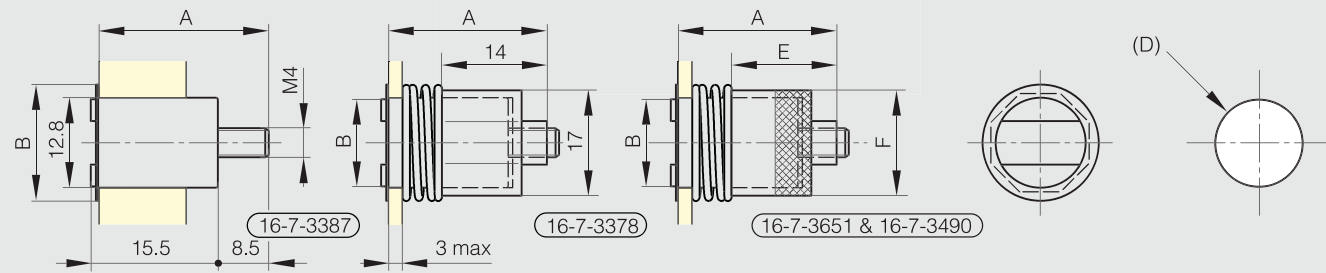
Flush magnetic catches

Flush compact magnetic catch without counterplate - force 4.2 kg

Fixing by plastic nut.



Part number	Material	Finish	A	B	D	Force	Weight (g)
16-7-3378	steel	zinc plated	24	12	13.5	4.2kg	14



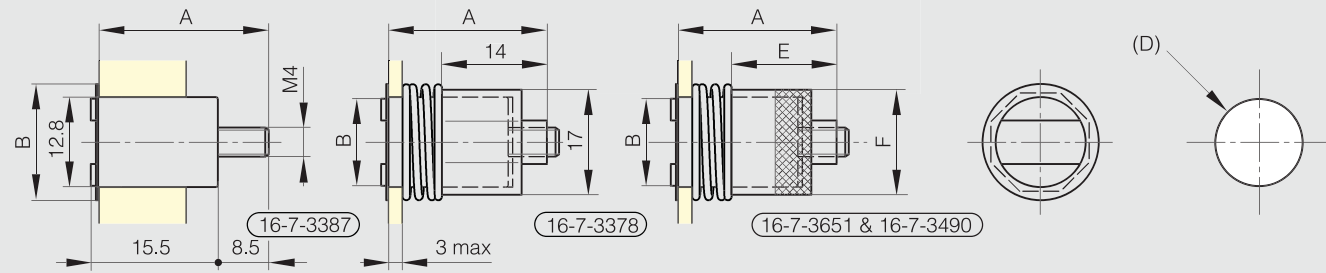
Flush compact catch without counterplate - high temperature resistance

Temperature resistance up to 250°C.

Fixing by knurled nut in aluminium.



Part number	Material	Finish	A	B	D	E	F	Force	Weight (g)
16-7-3490	steel	zinc plated	26	12	13.5	14.2	16.5	4.2kg	18
16-7-3651	steel	zinc plated	32	16	17.5	19.2	21.5	8kg	40

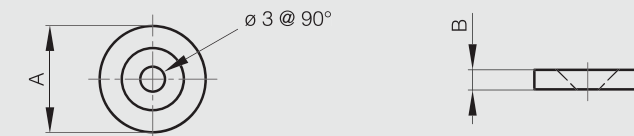


Flush magnetic catches

Counter plate for part numbers 16-7-3378, 16-7-3387, 16-7-3490 and 16-7-3651



Part number	Material	Finish	A	B	Weight (g)
16-7-3349	steel	zinc plated	15.1	3	4





Self-adhesive magnetic profile

Self-adhesive magnetic profile

Sold in 30 meter rolls.

The weight indicated in grams in the table is for 1 meter.

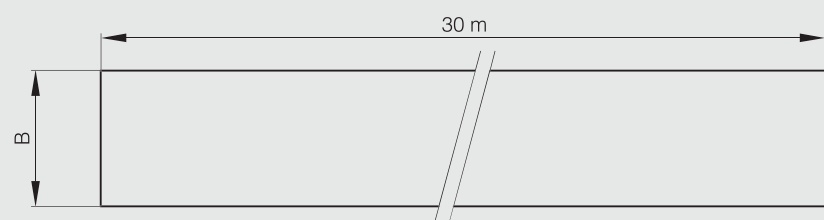
The weight of a roll (30 meters) is:

- 3.36 kg for the part number 16-7-3682.
- 8.70 kg for the part number 16-7-3683.

Heat resistance : 100°C

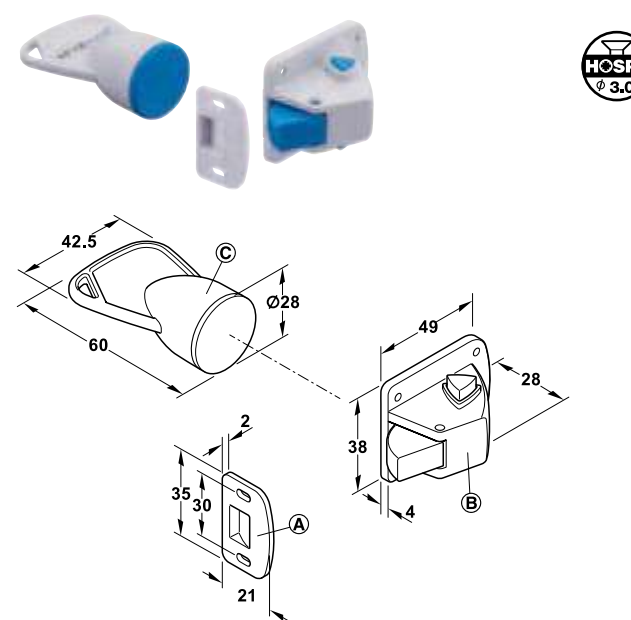


Part number	Material	Finish	B	C	Force	Weight (g)
16-7-3682	flexible magnet	self adhesive	19	1.5	55 g/cm ²	112
16-7-3683	flexible magnet	self adhesive	50	1.5	55 g/cm ²	290



Magnetic lock system

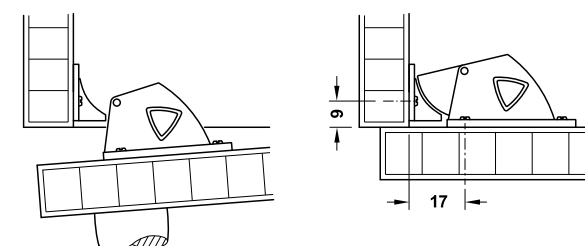
Magnetic lock system for doors



- (A) Counterpiece
- (B) whatlock® magnetic lock system for doors
- (C) whatlock® magnet opener

- > Area of application: For doors made from wood, glass, ceramic tiles, laminates and non-ferrous materials with door thickness of ≤25 mm, the whatlock® magnetic key unlocks the latchbolt so that the door can be opened, particularly suitable as child protection
- > Material: Plastic
- > Finish/colour: White/blue
- > Version: With adhesive strips
- > Installation: For screw fixing or glue fixing

Functionality



The latchbolt is retracted and the door can be opened when presenting the whatlock® magnetic key (not supplied).
The latchbolt engages automatically when the door is being closed.
The door is secured.

Supplied with

- For magnetic lock system for doors
- 1 latchbolt lock
- 1 counterpiece
- 6 chipboard screws Ø 3 mm

	Cat. No.
whatlock® magnetic lock system for doors	C245.41.792
whatlock® magnetic key	C245.41.798

Packing: 1 or 100 pieces



Retaining magnets

disc-shaped, without thread

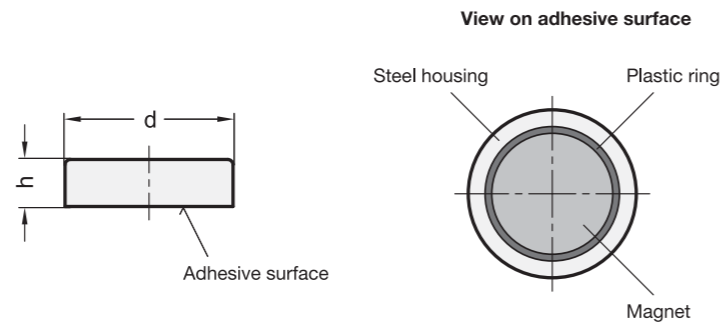
SPECIFICATION

Housing
Steel, zinc plated
Materials of the magnet:
Hard ferrite **HF**
temperature resistant up to 200 °C
SmCo **SC**
Samarium, cobalt
temperature resistant up to 200 °C
NdFeB **ND**
Neodymium, iron, boron
temperature resistant up to 80 °C



INFORMATION

Retaining magnets GN 50.1 are a shielded magnetic system.
Fixed in place by gluing or side-mounted thrust bolt (e.g. GN 913.2, see page 920) grub screw with pointed nose).
- More information to retaining magnets (see page 2022)



GN 50.1

Description	d	h	Nominal adhesive forces in N	⚖
GN 50.1-HF-10	10 ±0.1	4.5 +0.2/-0.1	4	2
GN 50.1-HF-13	13 ±0.1	4.5 +0.2/-0.1	10	3
GN 50.1-HF-16	16 ±0.1	4.5 +0.2/-0.1	18	5
GN 50.1-HF-20	20 ±0.1	6 +0.2/-0.1	30	9
GN 50.1-HF-25	25 ±0.1	7 +0.3/-0.1	40	17
GN 50.1-HF-32	32 ±0.1	7 +0.3/-0.1	80	29
GN 50.1-HF-40	40 +0.2/-0.1	8 +0.4/-0.1	125	54
GN 50.1-HF-50	50 +0.2/-0.1	10 +0.5/-0.1	220	102
GN 50.1-HF-63	63 +0.3/-0.1	14 +0.5/-0.1	350	226
GN 50.1-HF-80	80 +0.5/-0.1	18 +0.5/-0.1	600	468
GN 50.1-HF-100	100 +0.5/-0.1	22 +0.5/-0.1	900	915
GN 50.1-HF-125	125 +0.5/-0.1	26 +0.5/-0.1	1300	1680
GN 50.1-SC-6	6 ±0.1	4.5 ±0.1	5	1
GN 50.1-SC-8	8 ±0.1	4.5 ±0.1	11	2
GN 50.1-SC-10	10 ±0.1	4.5 ±0.1	20	3
GN 50.1-SC-13	13 ±0.1	4.5 ±0.1	40	4
GN 50.1-SC-16	16 ±0.1	4.5 ±0.1	60	7
GN 50.1-SC-20	20 ±0.1	6 ±0.1	90	14
GN 50.1-SC-25	25 ±0.1	7 ±0.2	150	26
GN 50.1-SC-32	32 ±0.1	7 ±0.2	220	42
GN 50.1-ND-6	6 ±0.1	4.5 ±0.1	5	1
GN 50.1-ND-8	8 ±0.1	4.5 ±0.1	13	2
GN 50.1-ND-10	10 ±0.1	4.5 ±0.1	25	2
GN 50.1-ND-13	13 ±0.1	4.5 ±0.1	60	4
GN 50.1-ND-16	16 ±0.1	4.5 ±0.1	95	6
GN 50.1-ND-20	20 ±0.1	6 ±0.1	140	14
GN 50.1-ND-25	25 ±0.1	7 ±0.2	200	26
GN 50.1-ND-32	32 ±0.1	7 ±0.2	350	41



Retaining magnets

disc-shaped, with female thread

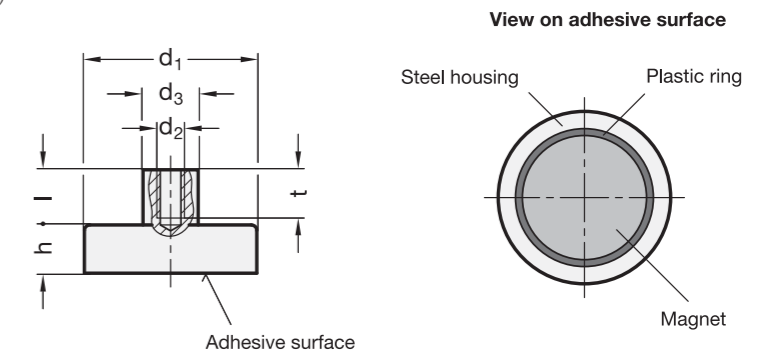
SPECIFICATION

Housing / threaded bushing
Steel, zinc plated
Materials of the magnet:
Hard ferrite **HF**
temperature resistant up to 200 °C
SmCo **SC**
Samarium, cobalt
temperature resistant up to 200 °C
NdFeB **ND**
Neodymium, iron, boron
temperature resistant up to 80 °C



INFORMATION

Retaining magnets GN 50.2 are a shielded magnetic system.
- More information to retaining magnets (see page 2022)



GN 50.2

Description	d1	d2	d3	h	l	t	Nominal adhesive forces in N	⚖
GN 50.2-HF-10-M3	10 ±0.1	M 3	6 ±0.1	4.5 +0.2/-0.1	7	5	4	3
GN 50.2-HF-13-M3	13 ±0.1	M 3	6 ±0.1	4.5 +0.2/-0.1	7	5	10	4
GN 50.2-HF-16-M3	16 ±0.1	M 3	6 ±0.1	4.5 +0.2/-0.1	7	5	18	6
GN 50.2-HF-20-M3	20 ±0.1	M 3	6 ±0.1	6 +0.2/-0.1	7	5	30	11
GN 50.2-HF-25-M4	25 ±0.1	M 4	8 ±0.2	7 +0.3/-0.1	8	7	40	20
GN 50.2-HF-32-M4	32 ±0.1	M 4	8 ±0.2	7 +0.3/-0.1	8	7	80	31
GN 50.2-HF-40-M5	40 +0.2/-0.1	M 5	10 ±0.2	8 +0.4/-0.1	10	9	125	59
GN 50.2-HF-50-M6	50 +0.2/-0.1	M 6	12 ±0.2	10 +0.5/-0.1	12	11	220	111
GN 50.2-HF-63-M8	63 +0.3/-0.1	M 8	15 ±0.2	14 +0.5/-0.1	16	14	350	242
GN 50.2-HF-80-M10	80 +0.5/-0.1	M 10	20 ±0.2	18 +0.5/-0.1	16	15	600	500
GN 50.2-HF-100-M12	100 +0.5/-0.1	M 12	22 ±0.2	22 +0.5/-0.1	21	18	900	948
GN 50.2-HF-125-M14	125 +0.5/-0.1	M 14	25 ±0.2	26 +0.5/-0.1	24	20	1300	1732
GN 50.2-SC-6-M3	6 ±0.1	M 3	6 ±0.1	4.5 ±0.1	7	6	5	2
GN 50.2-SC-8-M3	8 ±0.1	M 3	6 ±0.1	4.5 ±0.1	7	6	11	3
GN 50.2-SC-10-M3	10 ±0.1	M 3	6 ±0.1	4.5 ±0.1	7	6	20	4
GN 50.2-SC-13-M3	13 ±0.1	M 3	6 ±0.1	4.5 ±0.1	7	6	40	6
GN 50.2-SC-16-M4	16 ±0.1	M 4	6 ±0.1	4.5 ±0.1	7	6	60	8
GN 50.2-SC-20-M4	20 ±0.1	M 4	8 ±0.2	6 ±0.1	7	7	90	16
GN 50.2-SC-25-M4	25 ±0.1	M 4	8 ±0.2	7 ±0.2	7	7	150	28
GN 50.2-SC-32-M5	32 ±0.1	M 5	10 ±0.2	7 ±0.2	8.5	8	220	47
GN 50.2-ND-6-M3	6 ±0.1	M 3	6 ±0.1	4.5 ±0.1	7	6	5	2
GN 50.2-ND-8-M3	8 ±0.1	M 3	6 ±0.1	4.5 ±0.1	7	6	13	3
GN 50.2-ND-10-M3	10 ±0.1	M 3	6 ±0.1	4.5 ±0.1	7	6	25	4
GN 50.2-ND-13-M3	13 ±0.1	M 3	6 ±0.1	4.5 ±0.1	7	6	60	5
GN 50.2-ND-16-M4	16 ±0.1	M 4	6 ±0.1	4.5 ±0.1	7	6	95	7
GN 50.2-ND-20-M4	20 ±0.1	M 4	8 ±0.2	6 ±0.1	7	7	140	16
GN 50.2-ND-25-M4	25 ±0.1	M 4	8 ±0.2	7 ±0.2	7	7	200	27
GN 50.2-ND-32-M5	32 ±0.1	M 5	10 ±0.2	7 ±0.2	8.5	8	350	45



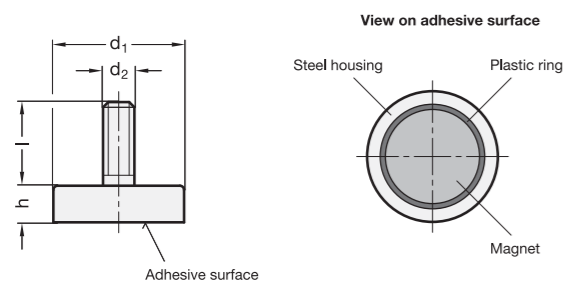
Retaining magnets disc-shaped, with threaded stud

SPECIFICATION

Housing / threaded stud
Steel, zinc plated
Materials of the magnet:
Hard ferrite **HF**
temperature resistant up to 200 °C
NdFeB **ND**
Neodymium, iron, boron
temperature resistant up to 80 °C

INFORMATION

Retaining magnets GN 50.3 are a shielded magnetic system.
- More information to retaining magnets (see page 2022)



GN 50.3

Description	d1	d2	h	l	Nominal adhesive forces in N	⚖
GN 50.3-HF-10-M3	10 ±0.1	M 3	4.5 +0.2/-0.1	7	4	2
GN 50.3-HF-13-M3	13 ±0.1	M 3	4.5 +0.2/-0.1	7	10	3
GN 50.3-HF-16-M3	16 ±0.1	M 3	4.5 +0.2/-0.1	7	18	5
GN 50.3-HF-20-M3	20 ±0.1	M 3	6 +0.2/-0.1	7	30	10
GN 50.3-HF-25-M4	25 ±0.1	M 4	7 +0.3/-0.1	8	40	19
GN 50.3-HF-32-M4	32 ±0.1	M 4	7 +0.3/-0.1	8	80	30
GN 50.3-HF-47-M6	47 +0.2/-0.1	M 6	9 +0.5/-0.1	8	180	85
GN 50.3-HF-63-M6	63 +0.3/-0.1	M 6	14 +0.5/-0.1	15	350	233
GN 50.3-ND-10-M4	10 ±0.1	M 4	4.5 ±0.1	8	25	3
GN 50.3-ND-13-M5	13 ±0.1	M 5	4.5 ±0.1	8	60	5
GN 50.3-ND-16-M6	16 ±0.1	M 6	4.5 ±0.1	8	95	7
GN 50.3-ND-20-M6	20 ±0.1	M 6	6 ±0.1	10	140	15
GN 50.3-ND-25-M6	25 ±0.1	M 6	7 ±0.1	10	200	27
GN 50.3-ND-32-M6	32 ±0.1	M 6	7 ±0.1	10	350	42



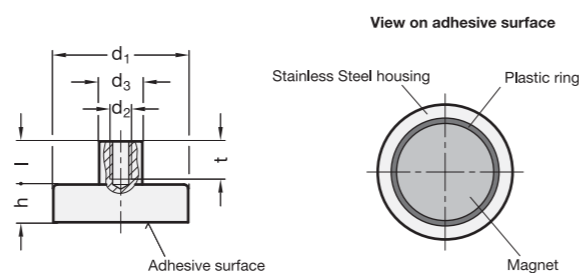
Stainless Steel- Retaining magnets disc-shaped, with female thread

SPECIFICATION

Housing / threaded bushing
Stainless Steel
Material of the magnet:
Hard ferrite **HF**
temperature resistant up to 220 °C

INFORMATION

Stainless Steel-Retaining magnets GN 50.25 are a shielded magnetic system.
Owing to the lower magnetic conductivity of the stainless steel housing, the adhesive forces are lower than in steel.
- More information to retaining magnets (see page 2022)



GN 50.25

STAINLESS STEEL

Description	d1	d2	d3	h	l	t	Nominal adhesive forces in N	⚖
GN 50.25-HF-25	25 ±0.1	M 5	8	7 +0.3/-0.1	9	8.25	32	20
GN 50.25-HF-32	32 ±0.1	M 5	8	7 +0.3/-0.1	9	9	64	31
GN 50.25-HF-40	40 +0.2/-0.1	M 5	8	8 +0.3/-0.1	8.5	9	100	56
GN 50.25-HF-50	50 +0.2/-0.1	M 5	8	10 +0.4/-0.1	8.5	9	175	105
GN 50.25-HF-63	63 +0.3/-0.1	M 5	8	14 +0.5/-0.1	8	9	280	228



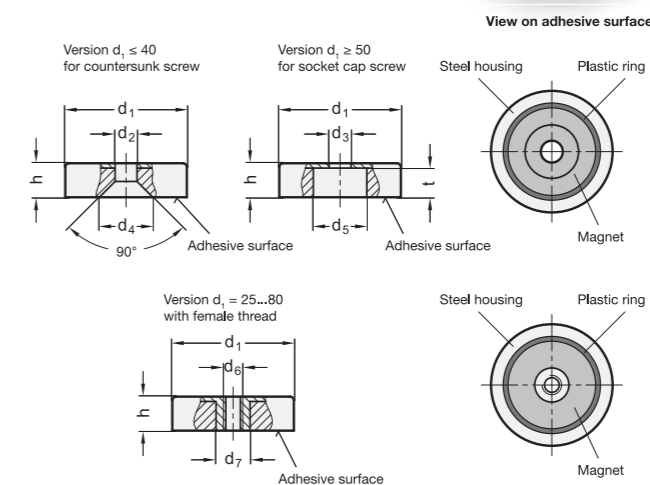
Retaining magnets disc-shaped, with bore or female thread

SPECIFICATION

Housing
Steel, zinc plated
Materials of the magnet:
Hard ferrite **HF**
temperature resistant up to 200 °C
NdFeB **ND**
Neodymium, iron, boron
temperature resistant up to 80 °C

INFORMATION

Retaining magnets GN 50.4 are a shielded magnetic system.
To ensure that the magnetic properties (adhesive forces) are not impaired, the fixing screws must be made of **non-magnetic** material (magnetic not conductive).
- More information to retaining magnets (see page 2022)



GN 50.4

Description	d1	d2	d3	d4	d5	d6	d7	t	h	Nominal adhesive forces in N	⚖
GN 50.4-HF-16	16 ±0.1	3.5	-	7.5	-	-	-	-	4.5 +0.2/-0.1	14	4
GN 50.4-HF-20	20 ±0.1	4.1	-	10.5	-	-	-	-	6 +0.2/-0.1	27	9
GN 50.4-HF-25	25 ±0.1	5.5	-	12	-	-	-	-	7 +0.3/-0.2	36	17
GN 50.4-HF-32	32 ±0.1	5.5	-	12	-	-	-	-	7 +0.3/-0.1	72	27
GN 50.4-HF-40	40 +0.2/-0.1	5.5	-	13.5	-	-	-	-	8 +0.4/-0.1	90	52
GN 50.4-HF-50	50 +0.2/-0.1	-	8.5 ±0.2	-	22	-	-	8.5	10 +0.5/-0.1	180	84
GN 50.4-HF-63	63 +0.3/-0.1	-	6.5 ±0.2	-	24	-	-	12	14 +0.5/-0.1	290	197
GN 50.4-HF-80	80 +0.5/-0.1	-	6.5 ±0.2	-	11.5	-	-	15	18 +0.5/-0.1	540	458
GN 50.4-HF-100	100 +0.5/-0.1	-	10.5 ±0.2	-	34	-	-	18	22 +0.5/-0.1	680	815
GN 50.4-ND-16	16 ±0.1	3.5	-	6.6	-	-	-	-	4.5 +0.2/-0.1	75	6
GN 50.4-ND-20	20 ±0.1	4.5	-	9	-	-	-	-	6 +0.2/-0.1	105	13
GN 50.4-ND-25	25 ±0.1	4.5	-	9	-	-	-	-	7 +0.3/-0.2	160	20
GN 50.4-ND-32	32 ±0.1	5.5	-	11	-	-	-	-	7 +0.3/-0.1	310	39
GN 50.4-ND-40	40 +0.2/-0.1	5.5	-	10.6	-	-	-	-	8 +0.4/-0.1	500	73
GN 50.4-HF-25-M4	25 ±0.1	-	-	-	-	M 4	5.2	-	7 +0.3/-0.2	36	17
GN 50.4-HF-32-M4	32 ±0.1	-	-	-	-	M 4	5.2	-	7 +0.3/-0.1	72	29
GN 50.4-HF-40-M4	40 +0.2/-0.1	-	-	-	-	M 4	5.2	-	8 +0.4/-0.1	90	54
GN 50.4-HF-50-M6	50 +0.2/-0.1	-	-	-	-	M 6	12	-	10 +0.5/-0.1	180	96
GN 50.4-HF-50-M8	50 +0.2/-0.1	-	-	-	-	M 8	12	-	10 +0.5/-0.1	180	92
GN 50.4-HF-63-M8	63 +0.3/-0.1	-	-	-	-	M 8	13	-	14 +0.5/-0.1	290	209
GN 50.4-HF-80-M8	80 +0.5/-0.1	-	-	-	-	M 8	14.5	-	18 +0.5/-0.1	540	479
GN 50.4-HF-80-M10	80 +0.5/-0.1	-	-	-	-	M 10	14.5	-	18 +0.5/-0.1	540	382

Stainless Steel- Retaining magnets

disc-shaped, with bore

SPECIFICATION

Housing
Stainless Steel
Materials of the magnet:
Hard ferrite **HF**
temperature resistant up to 220 °C
SmCo **SC**
Samarium, cobalt
temperature resistant up to 350 °C

INFORMATION

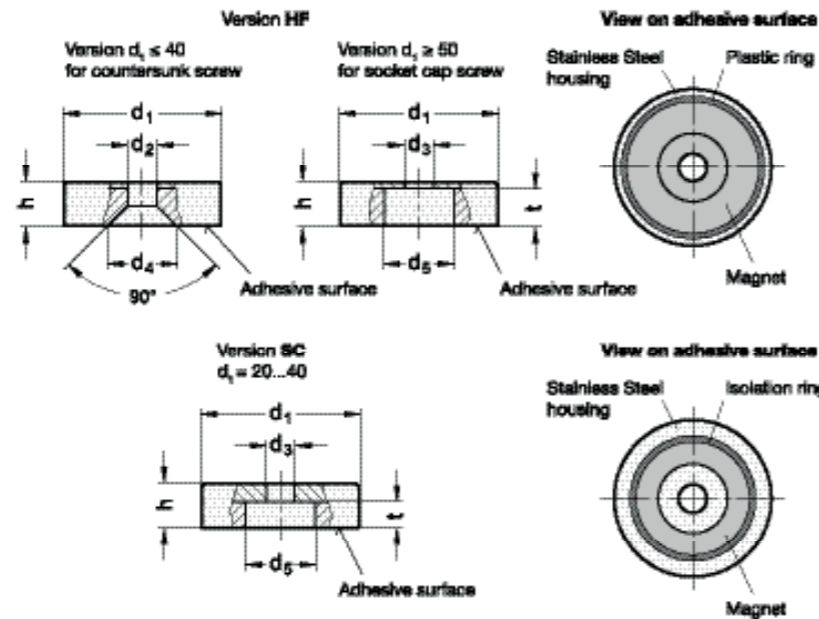
Stainless Steel-Retaining magnets GN 50.45 are a shielded magnetic system.
Owing to the lower magnetic conductivity of the stainless steel housing, the adhesive forces are lower than in steel.
To ensure that the magnetic properties (adhesive forces) are not impaired, the fixing screws must be made of **non-magnetic** material.
- More information to retaining magnets (see page 2022)

TECHNICAL INFORMATION

- Stainless Steel characteristics (see page A26)

ON REQUEST

- Raw magnets in ring shape in hard ferrite (HF)



GN 50.45

Description	d1	d2	d3	d4	d5	h	t	Nominal adhesive forces in N	⚖️
GN 50.45-HF-20	20 ±0.1	4.1	-	10	-	6 +0.2/-0.1	-	22	11
GN 50.45-HF-25	25 ±0.1	5.5	-	11.5	-	7 +0.3/-0.2	-	29	17
GN 50.45-HF-32	32 ±0.1	5.5	-	11.5	-	7 +0.3/-0.2	-	58	27
GN 50.45-HF-40	40 +0.2/-0.1	5.5	-	11.5	-	8 +0.4/-0.2	-	72	52
GN 50.45-HF-50	50 +0.2/-0.1	-	8.5	-	22	10 +0.5/-0.2	8.5	145	70
GN 50.45-HF-63	63 +0.3/-0.1	-	6.5	-	24	14 +0.5/-0.2	12	230	195
GN 50.45-SC-20	20 ±0.1	-	4.5	-	8	6 ±0.1	3.5	60	13
GN 50.45-SC-25	25 ±0.1	-	4.5	-	8	7 ±0.2	4	80	24
GN 50.45-SC-32	32 ±0.1	-	5.5	-	11	7 ±0.2	4	200	39
GN 50.45-SC-40	40 +0.2/-0.1	-	5.5	-	10.5	8 ±0.2	4	420	75

STAINLESS STEEL

Retaining magnets

disc-shaped, with hook / with eyelet

SPECIFICATION

Types

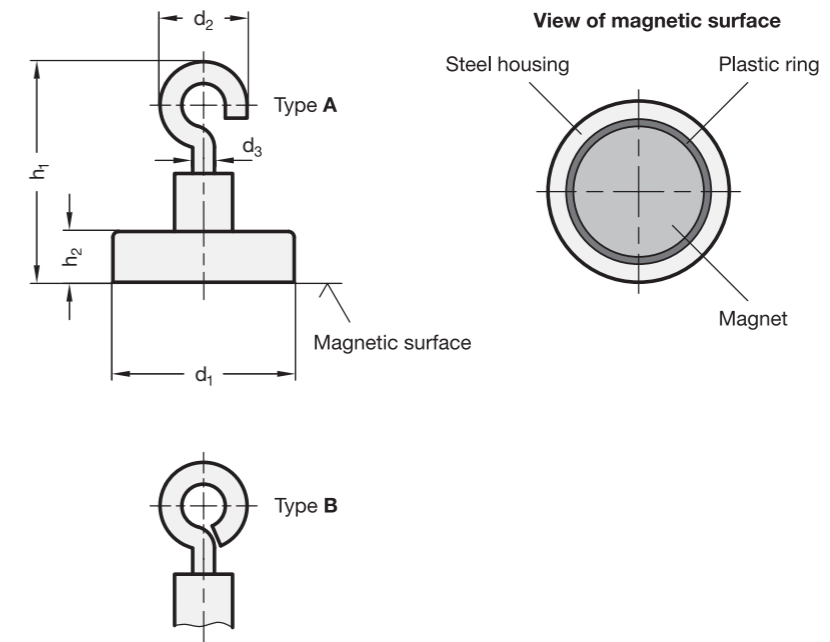
- Type **A**: with hook
- Type **B**: with eyelet

Housing / threaded bushing / hook / eyelet
steel, zinc plated

Material of the magnet:
Hard ferrite **HF**

INFORMATION

Retaining magnets GN 50.6 are a shielded magnetic system.
- More information to retaining magnets (see page 2022)



GN 50.6

Description	d1	d2 ±1	d3	h1 ±1	h2	Nominal adhesive forces in N	⚖️
GN 50.6-HF-16-A	16	10	3	24.5	4.5	18	6
GN 50.6-HF-25-A	25	13.5	4	30.5	7	40	23
GN 50.6-HF-32-A	32	13.5	4	30.5	7	80	34
GN 50.6-HF-40-A	40	13.5	4	30.5	8	125	59
GN 50.6-HF-50-A	50	13.5	4	32	10	220	108
GN 50.6-HF-63-A	63	13.5	4	36	14	350	232
GN 50.6-HF-80-A	80	23	6	57.5	18	600	490
GN 50.6-HF-16-B	16	10	3	24.5	4.5	18	5
GN 50.6-HF-25-B	25	12.5	4	30.5	7	40	23
GN 50.6-HF-32-B	32	12.5	4	30.5	7	80	34
GN 50.6-HF-40-B	40	12.5	4	30.5	8	125	59
GN 50.6-HF-50-B	50	12.5	4	35	10	220	108
GN 50.6-HF-63-B	63	12.5	4	38	14	350	232
GN 50.6-HF-80-B	80	20	6	51.5	18	600	496



Retaining magnets

disc-shaped, with female thread

SPECIFICATION

Housing
Steel, zinc plated
Material of the magnet
NdFeB **ND**
Neodymium, iron, boron
temperature resistant up to 80 °C
Plastic cover
Technopolymer (Polyamide PA)

INFORMATION

Retaining magnets GN 50.5 are a shielded magnetic system. For diameter $d_1 \geq 50$ the adhesive surface is lagged with a plastic cover. To ensure that the magnetic properties (adhesive forces) are not impaired, the fixing screws must be made of **non-magnetic** material.
- More information to retaining magnets (see page 2022)

TECHNICAL INFORMATION

- Plastic characteristics (see page A2)

Pot magnets

with bore

SPECIFICATION

Housing
Steel
Material of the magnet
AlNiCo **AN**
Aluminium, nickel, cobalt
temperature resistant up to 280 °C
Lacquering red
temperature resistant up to 180 °C

INFORMATION

Pot magnets GN 58 are a shielded magnetic system. To ensure that the magnetic properties (adhesive forces) are not impaired, the fixing screws must be made of **non-magnetic** material. For easier handling and/or to avoid demagnetisation, these magnets have an iron plate on their adhesive surface.
- More information to retaining magnets (see page 2022)



Retaining magnets

disc-shaped, with female thread, with rubber jacket

SPECIFICATION

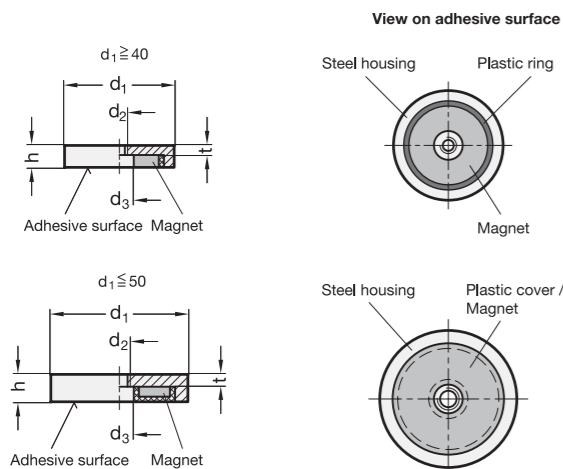
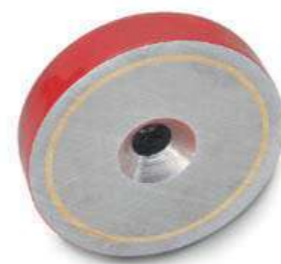
Steel part
zinc plated
Material of the magnet
NdFeB **ND**
Neodymium, iron, boron
temperature resistant up to 80 °C
Rubber jacket
Elastomer (TPE)
80 shore A \approx
black **SW**
white **WS**

INFORMATION

Retaining magnets GN 51.5 are a shielded magnetic system with rubber jacket. The rubber jacket protects sensitive surfaces from being damaged by the magnet and also delivers a higher friction coefficient, resulting in high lateral adhesion forces.
- More information to retaining magnets (see page 2022)

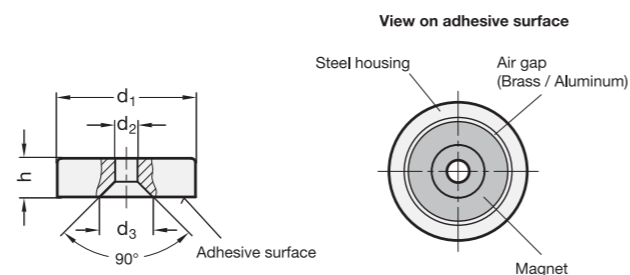
TECHNICAL INFORMATION

- Elastomer characteristics (see page A32)



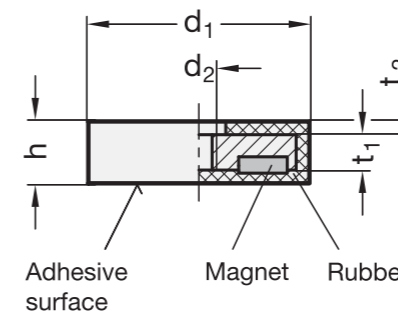
GN 50.5

Description	$d_1 \pm 0.1$	d_2	d_3	$h \pm 0.2$	t	Nominal adhesive forces in N	Δ
GN 50.5-ND-32	32	M 5	5.5	7	3	330	40
GN 50.5-ND-40	40	M 5	10.5	8	6	500	74
GN 50.5-ND-50	50	M 8	10.5	10	5.5	800	140
GN 50.5-ND-63	63	M 10	11.7	14	8.5	1100	315
GN 50.5-ND-75	75	M 10	13	15	8.5	1750	479

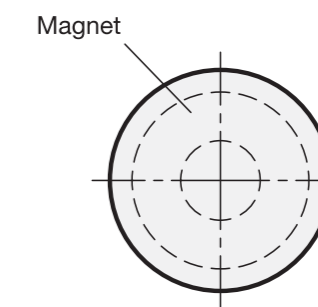


GN 58

Description	d_1	d_2	d_3	h	Nominal adhesive forces in N	Δ
GN 58-AN-19	19	3.7	$8.7 + 0.8 / - 0.2$	7.5	30	17
GN 58-AN-29	29	4.8	$10.5 + 1 / 0$	8.5 ± 0.5	50	43
GN 58-AN-38	38	4.8	$10 + 1 / - 0.5$	10.5	130	83



View on adhesive surface



GN 51.5

Description	d_1	d_2	h	t_1	t_2	Nominal adhesive forces in N	Δ
GN 51.5-ND-22-SW	22	M 4	6	4.5	0.8	35	9
GN 51.5-ND-22-WS	22	M 4	6	4.5	0.8	35	9
GN 51.5-ND-31-SW	31	M 5	6	4.5	0.8	75	21
GN 51.5-ND-31-WS	31	M 5	6	4.5	0.8	75	21
GN 51.5-ND-43-SW	43	M 4	5.5	4	0.8	85	29
GN 51.5-ND-43-WS	43	M 4	5.5	4	0.8	85	29
GN 51.5-ND-66-SW	66	M 6	8.5	6	1.8	180	100
GN 51.5-ND-66-WS	66	M 6	8.5	6	1.8	180	100
GN 51.5-ND-88-SW	88	M 6	8.5	6	1.8	420	186
GN 51.5-ND-88-WS	88	M 6	8.5	6	1.8	420	186



Retaining magnets

disc-shaped, with bore, with rubber jacket

SPECIFICATION

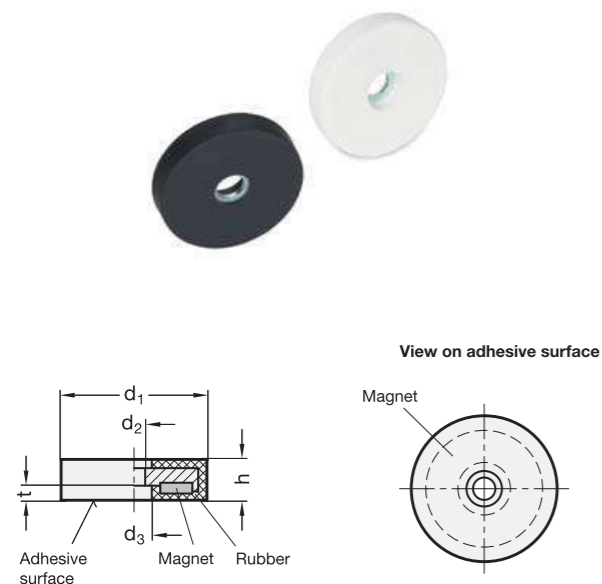
Steel part
zinc plated
Material of the magnet
NdFeB **ND**
Neodymium, iron, boron
temperature resistant up to 80 °C
Rubber jacket
Elastomer (TPE)
80 shore A ≈
black **SW**
white **WS**

INFORMATION

Retaining magnets GN 51.4 are a shielded magnetic system with rubber jacket.
The rubber jacket protects sensitive surfaces from being damaged by the magnet and also delivers a higher friction coefficient, resulting in high lateral adhesion forces.
- More information to retaining magnets (see page 2022)

TECHNICAL INFORMATION

- Elastomer characteristics (see page A32)



GN 51.4

Description	d1	d2	d3	t	h	Nominal adhesive forces in N	⚖️
GN 51.4-ND-22-SW	22	4	8	3.5	6	35	8
GN 51.4-ND-22-WS	22	4	8	3.5	6	35	8
GN 51.4-ND-31-SW	31	6	9	3.5	6	75	20
GN 51.4-ND-31-WS	31	6	9	3.5	6	75	20
GN 51.4-ND-57-SW	57	8	25.3	3.5	7.5	175	77
GN 51.4-ND-57-WS	57	8	25.3	3.5	7.5	175	77
GN 51.4-ND-66-SW	66	5.5	25	3.5	8.5	210	100
GN 51.4-ND-66-WS	66	5.5	25	3.5	8.5	210	100

Retaining magnets

disc-shaped, with 2 female thread, with rubber jacket

SPECIFICATION

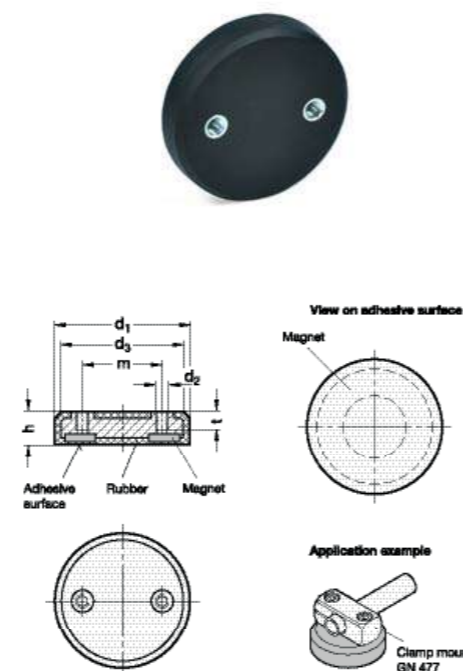
Steel part
zinc plated
Material of the magnet
NdFeB **ND**
Neodymium, iron, boron
temperature resistant up to 80 °C
Rubber jacket
Elastomer (TPE)
80 shore A ≈
black

INFORMATION

Retaining magnets GN 51.6 are a shielded magnetic system with rubber jacket.
The rubber jacket protects sensitive surfaces from being damaged by the magnet and also delivers a higher friction coefficient, resulting in high lateral adhesion forces.
Its dimensions, especially the drill hole spacing m and the thread d2, match the clamp mountings GN 473 (see page 1878), GN 477 (see page 1879) and GN 480 (see page 1885).
- More information to retaining magnets (see page 2022)

TECHNICAL INFORMATION

- Elastomer characteristics (see page A32)



GN 51.6

Description	d1	m	d2	d3	h	t	Nominal adhesive forces in N	⚖️
GN 51.6-ND-43-22-M4	43	22	M 4	39	10.3	6	85	37
GN 51.6-ND-43-27-M5	43	27	M 5	39	10.3	7	85	36
GN 51.6-ND-57-32-M6	57	32	M 6	53	11.3	7	175	87
GN 51.6-ND-57-36-M6	57	36	M 6	53	11.3	7	175	87

Retaining magnets

disc-shaped, with female thread, with rubber jacket

SPECIFICATION

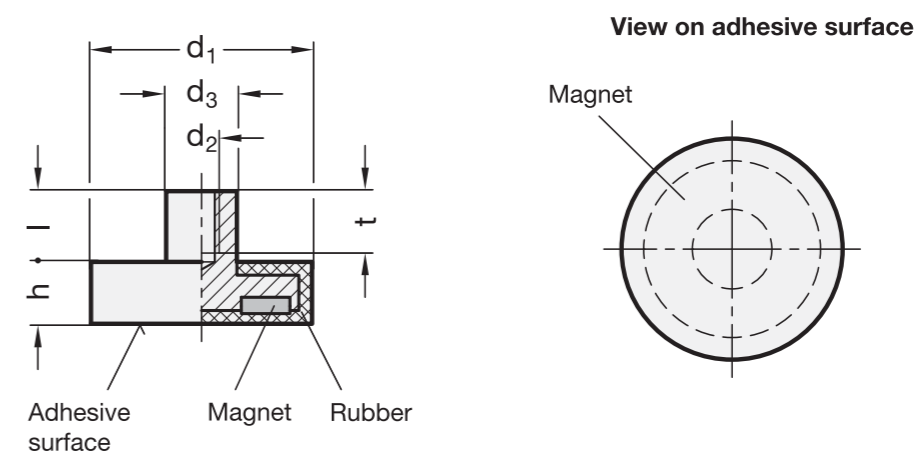
Steel part
zinc plated
Material of the magnet
NdFeB **ND**
Neodymium, iron, boron
temperature resistant up to 80 °C
Rubber jacket
Elastomer (TPE)
80 shore A ≈
black **SW**
white **WS**

INFORMATION

Retaining magnets GN 51.2 are a shielded magnetic system with rubber jacket.
The rubber jacket protects sensitive surfaces from being damaged by the magnet and also delivers a higher friction coefficient, resulting in high lateral adhesion forces.
- More information to retaining magnets (see page 2022)

TECHNICAL INFORMATION

- Elastomer characteristics (see page A32)



GN 51.2

Description	d1	d2	d3	h	l	t min.	Nominal adhesive forces in N	⚖️
GN 51.2-ND-12-SW	12	M 4	8	7	8	6	10	6
GN 51.2-ND-12-WS	12	M 4	8	7	8	6	10	6
GN 51.2-ND-22-SW	22	M 4	8	6	5.5	5	50	13
GN 51.2-ND-22-WS	22	M 4	8	6	5.5	5	50	13
GN 51.2-ND-31-SW	31	M 4	8	6	5.5	5	75	22
GN 51.2-ND-31-WS	31	M 4	8	6	5.5	5	75	22
GN 51.2-ND-43-SW	43	M 4	8	6	4.5	5	85	30
GN 51.2-ND-43-WS	43	M 4	8	6	4.5	5	85	30
GN 51.2-ND-66-SW	66	M 5	10	8.5	6.5	8	180	105
GN 51.2-ND-66-WS	66	M 5	10	8.5	6.5	8	180	105
GN 51.2-ND-88-SW	88	M 8	12	8.5	8.5	11	420	192
GN 51.2-ND-88-WS	88	M 8	12	8.5	8.5	11	420	192



Retaining magnets

disc-shaped, with threaded stud, with rubber jacket

SPECIFICATION

Steel part
zinc plated

Material of the magnet
NdFeB **ND**
Neodymium, iron, boron
temperature resistant up to 60 °C

Rubber jacket
Elastomer (TPE)
80 shore A ≈
black **SW**
white **WS**

INFORMATION

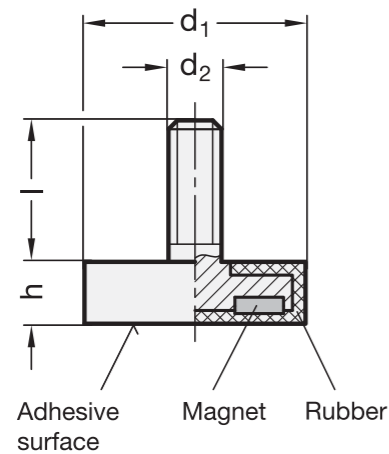
Retaining magnets GN 51.3 are a shielded magnetic system with rubber jacket.

The rubber jacket protects sensitive surfaces from being damaged by the magnet and also delivers a higher friction coefficient, resulting in high lateral adhesion forces.

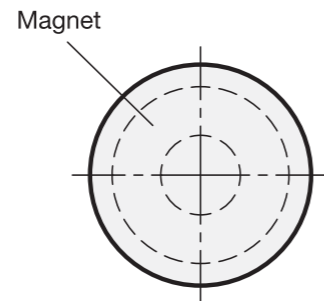
- More information to retaining magnets (see page 2022)

TECHNICAL INFORMATION

- Elastomer characteristics (see page A32)



View on adhesive surface



GN 51.3

Description	d1	d2	h	l	Nominal adhesive forces in N	⚖
GN 51.3-ND-22-SW	22	M 4	6	6.5	50	10
GN 51.3-ND-22-WS	22	M 4	6	6.5	50	10
GN 51.3-ND-43-SW	43	M 6	6	15	85	32
GN 51.3-ND-43-WS	43	M 6	6	15	85	32
GN 51.3-ND-66-SW	66	M 8	8.5	15	180	107
GN 51.3-ND-66-WS	66	M 8	8.5	15	180	107
GN 51.3-ND-88-SW	88	M 8	8.5	15	420	193
GN 51.3-ND-88-WS	88	M 8	8.5	15	420	193



Retaining magnets

rod-shaped, without bore

SPECIFICATION

Housing
Brass

Materials of the magnet:
SmCo **SC**
Samarium, cobalt
temperature resistant up to 200 °C

NdFeB **ND**
Neodymium, iron, boron
temperature resistant up to 80 °C

Identification of ND:
blue inked adhesive surface area



INFORMATION

Retaining magnets GN 54.1 are a shielded magnetic system.

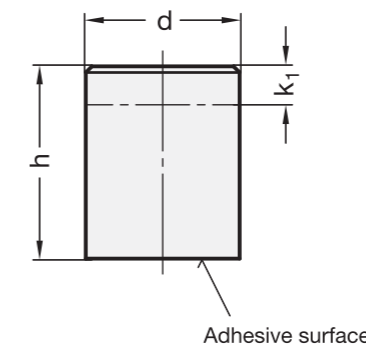
The configuration of magnetic and iron poles is known as sandwich magnet system. These retaining magnets deliver ultimate holding power, also with smaller workpieces.

Attachment options include pressing in or gluing in.

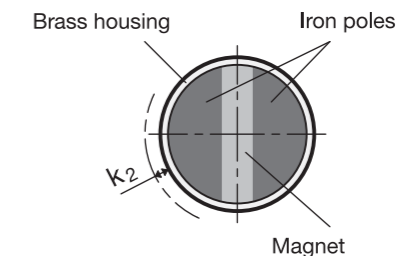
* k1 is the maximum dimension by which the retaining magnet can be shortened without losing its properties.

** Mounting these retaining magnets directly in steel components will create a magnetic shortcircuit which reduces the retaining power by as much as 15%. To avoid this effect, the spacings k2 between brass jacket and steel component should be observed. These spacings should also be maintained if the retaining magnet is shortened.

- More information to retaining magnets (see page 2022)



View on adhesive surface



GN 54.1

Description	d h6	h	k1*	k2**	Nominal adhesive forces in N	⚖
GN 54.1-SC-6	6	20 ±0.2	10	1.5	8	5
GN 54.1-SC-8	8	20 ±0.2	10	1.5	22	8
GN 54.1-SC-10	10	20 ±0.2	8	2	40	12
GN 54.1-SC-13	13	20 ±0.2	6	2.5	60	20
GN 54.1-SC-16	16	20 ±0.2	2	3	125	30
GN 54.1-SC-20	20	25 ±0.2	5	4	250	60
GN 54.1-SC-25	25	35 ±0.3	7	5	400	134
GN 54.1-SC-32	32	40 ±0.3	4.5	6	600	251
GN 54.1-ND-6	6	20 ±0.2	10	1.5	10	5
GN 54.1-ND-8	8	20 ±0.2	10	1.5	22	8
GN 54.1-ND-10	10	20 ±0.2	8	2	45	12
GN 54.1-ND-13	13	20 ±0.2	6	2.5	70	20
GN 54.1-ND-16	16	20 ±0.2	2	3	150	30
GN 54.1-ND-20	20	25 ±0.2	5	4	280	59
GN 54.1-ND-25	25	35 ±0.3	7	5	450	132
GN 54.1-ND-32	32	40 ±0.3	4.5	6	700	246



Retaining magnets

rod-shaped, without bore

SPECIFICATION

Identification No.

- No. 1: Tolerance d = ±0.2
- No. 2: Tolerance d = h6

Housing
Steel

- Identification No. 1: zinc plated
- Identification No. 2: blank

Materials of the magnet:

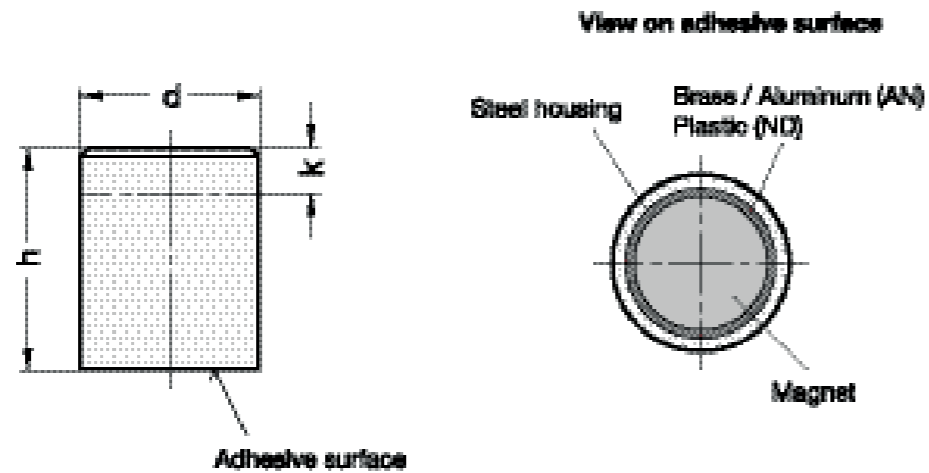
AlNiCo AN
Aluminium, nickel, cobalt
temperature resistant up to 450 °C

NdFeB ND
Neodymium, iron, boron
temperature resistant up to 80 °C



INFORMATION

Retaining magnets GN 52.1 are a shielded magnetic system.
Attachment options include pressing in, shrinking in or gluing in.
- More information to retaining magnets (see page 2022)



GN 52.1

Description	d	h ±0.2	k*	Nominal adhesive forces in N	⚖
GN 52.1-AN-6-1	6	20	12	2	4
GN 52.1-AN-8-1	8	20	11	4	8
GN 52.1-AN-10-1	10	20	10	8.5	12
GN 52.1-AN-13-1	13	20	8	12	19
GN 52.1-AN-16-1	16	20	6	20	30
GN 52.1-AN-20-1	20	25	5	40	58
GN 52.1-AN-25-1	25	35	13	60	125
GN 52.1-AN-32-1	32	40	9	160	220
GN 52.1-AN-40-1	40	50	10	240	440
GN 52.1-AN-50-1	50	60	10	400	813
GN 52.1-AN-63-1	63	65	10	660	1306
GN 52.1-AN-6-2	6	10	2	2	2
GN 52.1-AN-8-2	8	12	3	4	5
GN 52.1-AN-10-2	10	16	6	8.5	10
GN 52.1-AN-13-2	13	18	6	12	18
GN 52.1-AN-16-2	16	20	6	20	30
GN 52.1-AN-20-2	20	25	5	40	57
GN 52.1-AN-25-2	25	30	7	60	106
GN 52.1-AN-32-2	32	35	4	160	187
GN 52.1-AN-40-2	40	45	5	240	390
GN 52.1-AN-50-2	50	50	-	400	639
GN 52.1-AN-63-2	63	60	5	660	1175
GN 52.1-ND-4-1	4	20	15	2.5	2
GN 52.1-ND-5-1	5	20	15	4.5	3
GN 52.1-ND-6-1	6	20	15	6	5
GN 52.1-ND-8-1	8	20	15	12	8
GN 52.1-ND-10-1	10	20	15	24	12
GN 52.1-ND-13-1	13	20	15	60	21
GN 52.1-ND-16-1	16	20	15	90	31
GN 52.1-ND-20-1	20	25	18	135	61
GN 52.1-ND-25-1	25	35	27	190	133
GN 52.1-ND-32-1	32	40	32	340	249
GN 52.1-ND-6-2	6	10	5	6	2
GN 52.1-ND-8-2	8	12	7	12	5
GN 52.1-ND-10-2	10	16	11	24	9
GN 52.1-ND-13-2	13	18	13	60	18
GN 52.1-ND-16-2	16	20	15	90	31
GN 52.1-ND-20-2	20	25	18	135	60
GN 52.1-ND-25-2	25	30	22	190	115
GN 52.1-ND-32-2	32	35	27	340	218

* k is the maximum dimension by which the retaining magnet can be shorted without losing its properties.



Retaining magnets

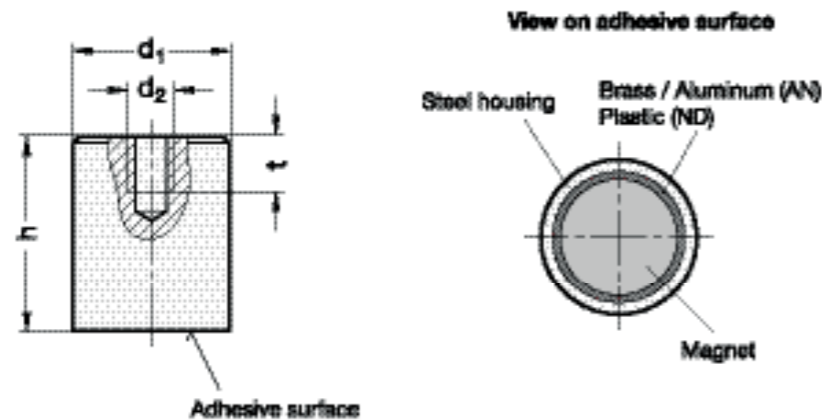
rod-shaped, with female thread

SPECIFICATION

Housing
Steel, zinc plated
Materials of the magnet:
AlNiCo **AN**
Aluminium, nickel, cobalt
temperature resistant up to 450 °C
NdFeB **ND**
Neodymium, iron, boron
temperature resistant up to 80 °C

INFORMATION

Retaining magnets GN 52.2 are a shielded magnetic system.
- More information to retaining magnets (see page 2022)



GN 52.2

Description	d1 ±0.2	d2	h ±0.2	t min.	Nominal adhesive forces in N	⚖
GN 52.2-AN-6	6	M3	20	5	2	4
GN 52.2-AN-8	8	M3	20	5	4	8
GN 52.2-AN-10	10	M4	20	7	8.5	11
GN 52.2-AN-13	13	M4	20	7	12	19
GN 52.2-AN-16	16	M4	20	7	20	30
GN 52.2-AN-20	20	M6	25	9	40	53
GN 52.2-AN-25	25	M6	35	9	60	121
GN 52.2-AN-32	32	M8	40	12	160	212
GN 52.2-AN-40	40	M8	50	12	240	437
GN 52.2-AN-50	50	M10	60	12	400	793
GN 52.2-AN-63	63	M12	65	14	660	1273
GN 52.2-ND-6	6	M3	20	5	6	4
GN 52.2-ND-8	8	M3	20	5	12	8
GN 52.2-ND-10	10	M4	20	7	24	11
GN 52.2-ND-13	13	M4	20	7	60	19
GN 52.2-ND-16	16	M4	20	7	90	30
GN 52.2-ND-20	20	M6	25	9	135	58
GN 52.2-ND-25	25	M6	35	9	190	131
GN 52.2-ND-32	32	M8	40	12	340	243
GN 52.2-ND-40	40	M8	50	12	600	480
GN 52.2-ND-50	50	M10	60	12	900	904
GN 52.2-ND-63	63	M12	65	14	1300	1555



Retaining magnets

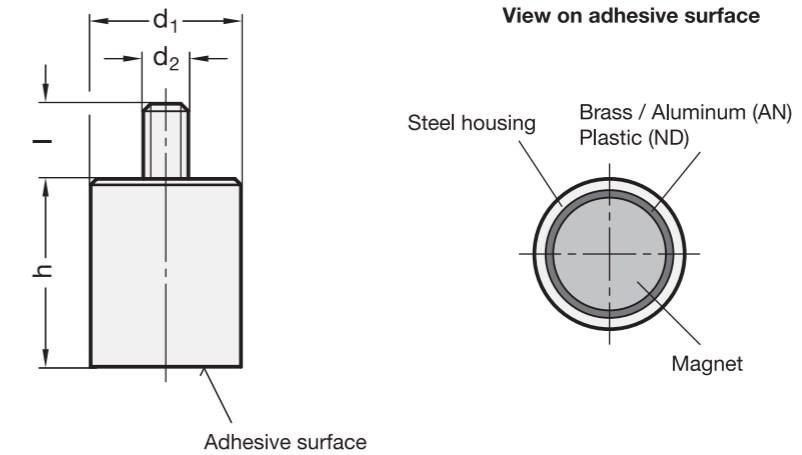
rod-shaped, with threaded stud

SPECIFICATION

Type
- Type **E**: with threaded stud
Housing
Steel, zinc plated
Materials of the magnet:
AlNiCo **AN**
Aluminium, nickel, cobalt
temperature resistant up to 450 °C
NdFeB **ND**
Neodymium, iron, boron
temperature resistant up to 80 °C

INFORMATION

Retaining magnets GN 52.4 are a shielded magnetic system.
- More information to retaining magnets (see page 2022)



GN 52.4

Description	d1 ±0.2	d2	h ±0.2	l	Nominal adhesive forces in N	⚖
GN 52.4-AN-6-M3-E	6	M3	20	7	2	5
GN 52.4-AN-8-M3-E	8	M3	20	7	4	8
GN 52.4-AN-10-M4-E	10	M4	20	8	8.5	13
GN 52.4-AN-13-M4-E	13	M4	20	8	12	21
GN 52.4-AN-16-M4-E	16	M4	20	10	20	31
GN 52.4-AN-20-M6-E	20	M6	25	10	40	60
GN 52.4-AN-25-M6-E	25	M6	35	10	60	125
GN 52.4-AN-32-M8-E	32	M8	40	12	160	217
GN 52.4-AN-40-M8-E	40	M8	50	15	240	458
GN 52.4-AN-50-M10-E	50	M10	60	15	400	855
GN 52.4-AN-63-M12-E	63	M12	65	20	660	1345
GN 52.4-ND-6-M3-E	6	M3	20	7	6	5
GN 52.4-ND-8-M3-E	8	M3	20	7	12	9
GN 52.4-ND-10-M4-E	10	M4	20	8	24	14
GN 52.4-ND-13-M4-E	13	M4	20	8	60	23
GN 52.4-ND-16-M4-E	16	M4	20	10	90	33
GN 52.4-ND-20-M6-E	20	M6	25	10	135	62
GN 52.4-ND-25-M6-E	25	M6	35	10	190	127
GN 52.4-ND-32-M8-E	32	M8	40	12	340	220
GN 52.4-ND-40-M8-E	40	M8	50	15	700	461
GN 52.4-ND-50-M10-E	50	M10	60	15	1000	860
GN 52.4-ND-63-M12-E	63	M12	65	20	1700	1350

GN 52.3



Retaining magnets rod-shaped, with female thread

SPECIFICATION

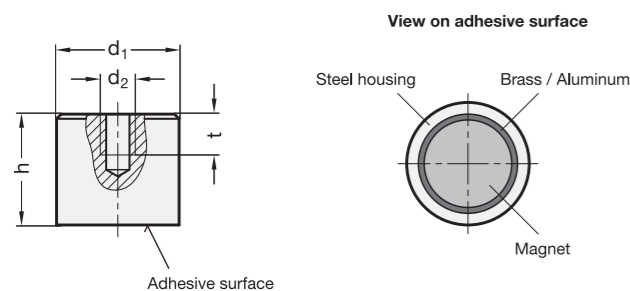
Housing
Steel

Material of the magnet
AlNiCo **AN**
Aluminium, nickel, cobalt
temperature resistant up to 350 °C

Lacquering red
temperature resistant up to 180 °C

INFORMATION

Retaining magnets GN 52.3 are a shielded magnetic system.
For easier handling and/or to avoid demagnetisation, these magnets have an iron plate on their adhesive surface.
- More information to retaining magnets (see page 2022)



GN 52.3

Description	d1 ±0.2	d2	h ±0.2	t	Nominal adhesive forces in N	⚖️
GN 52.3-AN-12,5	12.5	M 4	16	7	20	12
GN 52.3-AN-17	17	M 6	16	5	26	29
GN 52.3-AN-21	21	M 6	19	7	40	42
GN 52.3-AN-27	27	M 6	25	9	65	89
GN 52.3-AN-35	35	M 6	30	9	150	190

GN 52.5



Stainless Steel- Retaining magnets rod-shaped, with gummed adhesive surface

SPECIFICATION

Housing
Stainless Steel

Material of the magnet
NdFeB **ND**
temperature resistant up to 80 °C

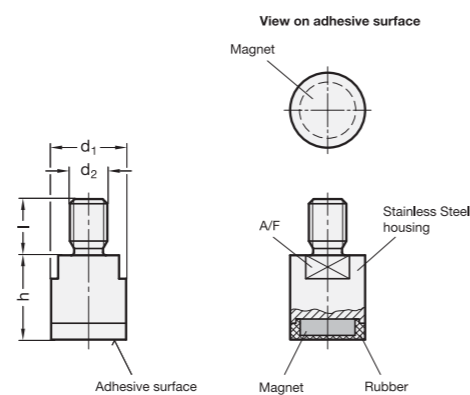
Rubber
Elastomer (TPE)
80 shore A ≈
black

INFORMATION

Stainless Steel-Retaining magnets GN 52.5 are a shielded magnetic system with gummed adhesive surface.
They are preferably used for sensitive surfaces. Also, the coefficient of friction is increased, with the effect that high lateral retaining forces are achieved.
- More information to retaining magnets (see page 2022)

TECHNICAL INFORMATION

- Elastomer characteristics (see page A32)



GN 52.5

STAINLESS STEEL

Description	d1	d2	h	l	A/F	Nominal adhesive forces in N	⚖️
GN 52.5-ND-13-M6	13	M 6	16	10	11	15	16
GN 52.5-ND-16-M8	16	M 8	18	12	13	23	29
GN 52.5-ND-20-M10	20	M 10	20	14	17	46	52

GN 60



Button-type magnets with bore

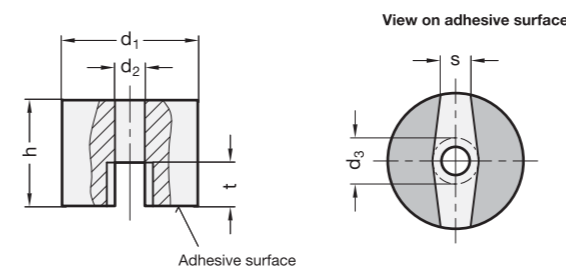
SPECIFICATION

Material of the magnet
AlNiCo **AN**
Aluminium, nickel, cobalt
temperature resistant up to 280 °C

Lacquering red
temperature resistant up to 180 °C

INFORMATION

The button-type magnets GN 60 have a split adhesive surface. These are non-shielded magnetic systems made by casting method.
To ensure that the magnetic properties (adhesive forces) are not impaired, the fixing screws must be made of **non-magnetic** material.
For easier handling and/or to avoid demagnetisation, these magnets have an iron plate on their adhesive surface.
- More information to retaining magnets (see page 2022)



GN 60

Description	d1 Nominal dimension	d1 Actual dimension	d2	d3 max.	h	s	t	Nominal adhesive forces in N	⚖️
GN 60-AN-13	13	13	4.5	7	10	4.5	5	7	6
GN 60-AN-19	19	19.1	4.8	8.7	12.7	5.7	6.5	19	23
GN 60-AN-25	25	25.4	4.5	8.5	20	5.6	8	29	71
GN 60-AN-32	32	31.8	7.1	10	25.4	7.9	12.7	66	132

GN 62



U-Magnets with bore

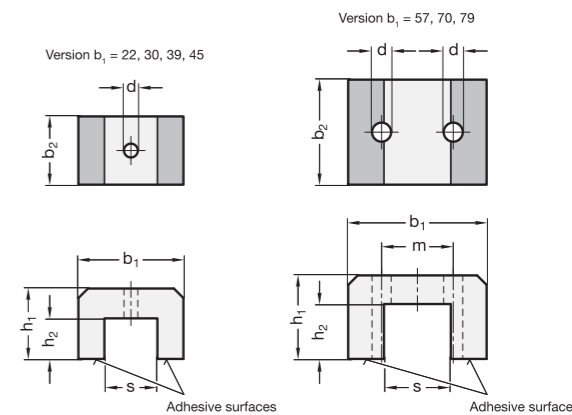
SPECIFICATION

Material of the magnet
AlNiCo **AN**
Aluminium, nickel, cobalt
temperature resistant up to 350 °C

Lacquering red
temperature resistant up to 180 °C

INFORMATION

The U-Magnets GN 62 have a split adhesive surface. These are non-shielded magnetic systems made by casting method.
To ensure that the magnetic properties (adhesive forces) are not impaired, the fixing screws must be made of **non-magnetic** material.
For easier handling and/or to avoid demagnetisation, these magnets have an iron plate on their adhesive surface.
- More information to retaining magnets (see page 2022)



GN 62

Description	b1	b2	d	h1	h2	m	s	Nominal adhesive forces in N	⚖️
GN 62-AN-22	22	25	7	17	9	-	8	30	67
GN 62-AN-30	30	20	5	20	11	-	15	45	72
GN 62-AN-39	39	25.4	4.7	25	14	-	19	90	154
GN 62-AN-45	45	30	4.7	30	17	-	23	120	212
GN 62-AN-57	57	44.5	8	35	23	31.5	27.8	180	501
GN 62-AN-70	70	57	8	41	25	38	35	320	773
GN 62-AN-79	79	82	9.5	54	36	43	38.5	470	1573



Magnets

SPECIFICATION

Housing
Plastic

- white, RAL 9003 **WS**
- grey, RAL 7040 **GR**
- red, RAL 3031 **RT**

Material of the magnet
NdFeB **ND**
Neodymium, iron, boron
temperature resistant up to 80 °C

INFORMATION

Magnets GN 53.1 are primarily used for holding drawings and the like. The magnetic material ND is characterized by a high adhesive force.

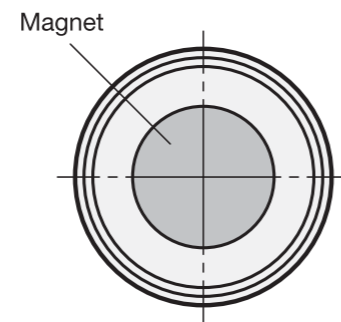
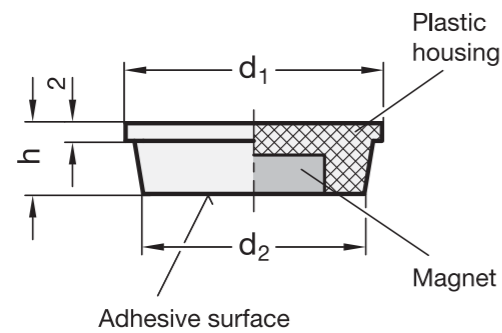
- More information to magnets (see page 2022)

ON REQUEST

- Magnets with custom imprint



View on adhesive surface



GN 53.1

Description	d1	d2	h	Nominal adhesive forces in N	⚖
GN 53.1-ND-18-GR	18	14	8	10	3
GN 53.1-ND-18-RT	18	14	8	10	3
GN 53.1-ND-18-WS	18	14	8	10	3
GN 53.1-ND-25-GR	25	22	8.5	14	8
GN 53.1-ND-25-RT	25	22	8.5	14	8
GN 53.1-ND-25-WS	25	22	8.5	14	8
GN 53.1-ND-30-GR	30	28.5	8.5	27	9
GN 53.1-ND-30-RT	30	28.5	8.5	27	9
GN 53.1-ND-30-WS	30	28.5	8.5	27	9
GN 53.1-ND-36-GR	36	32.5	8.5	35	11
GN 53.1-ND-36-RT	36	32.5	8.5	35	11
GN 53.1-ND-36-WS	36	32.5	8.5	35	11
GN 53.1-ND-40-GR	40	36	8	35	11
GN 53.1-ND-40-RT	40	36	8	35	11
GN 53.1-ND-40-WS	40	36	8	35	11



Magnets

with ball knob / with key ring, with rubber jacket

SPECIFICATION

Types

- Type **A**: with knob
- Type **B**: with key ring

Steel part
nickel plated

Material of the magnet
NdFeB **ND**
Neodymium, iron, boron
temperature resistant up to 80 °C

Rubber jacket
Elastomer (TPE)
80 shore A ≈
black

Ball knob
Plastic
Technopolymer (Polyamide PA)
black, matt

Key ring
Steel, nickel plated



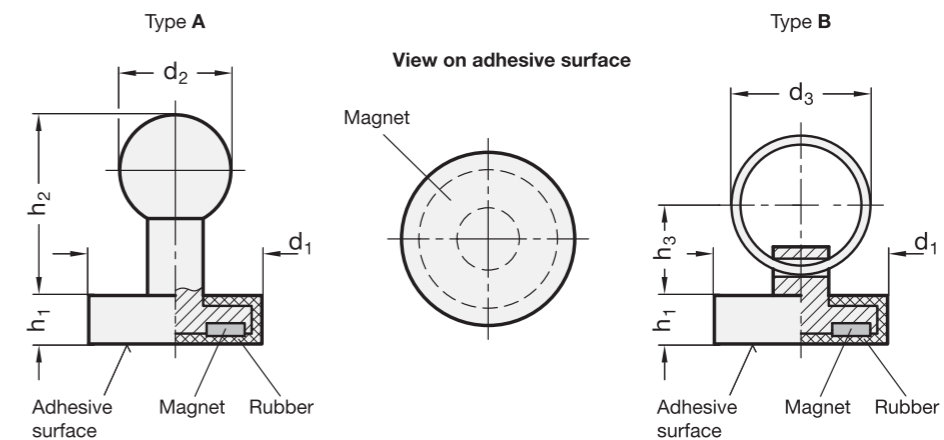
INFORMATION

Magnets GN 51.7 are a shielded magnetic system with rubber jacket. The rubber jacket protects sensitive surfaces from being damaged by the magnet and also delivers a higher friction coefficient, resulting in high lateral adhesion forces.

- More information to retaining magnets (see page 2022)

TECHNICAL INFORMATION

- Elastomer characteristics (see page A32)



GN 51.7

Description	d1	d2	d3	h1	h2	h3	Nominal adhesive forces in N	⚖
GN 51.7-ND-22-A	22	16	-	6	25	-	35	17
GN 51.7-ND-31-A	31	16	-	6	25	-	75	28
GN 51.7-ND-43-A	43	16	-	5.5	24	-	85	48
GN 51.7-ND-22-B	22	-	20	6	-	13	35	14
GN 51.7-ND-31-B	31	-	25	6	-	14.5	75	25
GN 51.7-ND-43-B	43	-	30	5.5	-	17	85	34



Setting bolts

with retaining magnet

SPECIFICATION

Screw Steel

- Tensile strength class 5.8
- zinc plated, blue passivated

Hexagon nut Steel

- Tensile strength class 04
- zinc plated, blue passivated

Material of the magnet

NdFeB **ND**

Neodymium, iron boron

temperature resistant up to 80 °C



INFORMATION

Setting bolts GN 251.6 with retaining magnet are a shielded magnetic system.

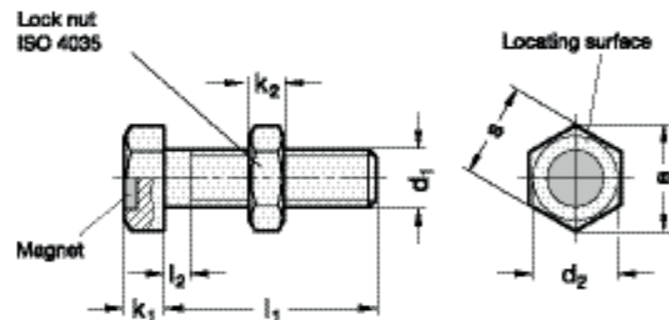
Suitable e.g. as workpiece stop, with the magnet holding the workpiece in place.

The locking nut (included) can be used to secure the stop screw after positioning.

- More information to retaining magnets (see page 2022)

TECHNICAL INFORMATION

- Strength values of screws (see page A20)



GN 251.6

Description	d1*	l1	d2	e ≈	k1 -1	k2	l2 max.	s	Nominal adhesive forces in N	⚖
GN 251.6-M6-12-ND	M 6	12	10	11	4	3.2	3	10	25	5
GN 251.6-M6-16-ND	M 6	16	10	11	4	3.2	3	10	25	6
GN 251.6-M6-20-ND	M 6	20	10	11	4	3.2	3	10	25	7
GN 251.6-M6-25-ND	M 6	25	10	11	4	3.2	3	10	25	8
GN 251.6-M6-30-ND	M 6	30	10	11	4	3.2	3	10	25	9
GN 251.6-M8-16-ND	M 8	16	13	14.4	5.3	4	3.7	13	50	13
GN 251.6-M8-20-ND	M 8	20	13	14.4	5.3	4	3.7	13	50	14
GN 251.6-M8-25-ND	M 8	25	13	14.4	5.3	4	3.7	13	50	16
GN 251.6-M8-30-ND	M 8	30	13	14.4	5.3	4	3.7	13	50	17
GN 251.6-M8-40-ND	M 8	40	13	14.4	5.3	4	3.7	13	50	21
GN 251.6-M10-20-ND	M 10	20	17	17.8	6.4	5	4.5	17	75	26
GN 251.6-M10-25-ND	M 10	25	17	17.8	6.4	5	4.5	17	75	30
GN 251.6-M10-30-ND	M 10	30	17	17.8	6.4	5	4.5	17	75	37
GN 251.6-M10-40-ND	M 10	40	17	17.8	6.4	5	4.5	17	75	37
GN 251.6-M10-50-ND	M 10	50	17	17.8	6.4	5	4.5	17	75	42
GN 251.6-M12-25-ND	M 12	25	19	20	7.5	6	5.2	19	110	44
GN 251.6-M12-30-ND	M 12	30	19	20	7.5	6	5.2	19	110	48
GN 251.6-M12-40-ND	M 12	40	19	20	7.5	6	5.2	19	110	55
GN 251.6-M12-50-ND	M 12	50	19	20	7.5	6	5.2	19	110	62
GN 251.6-M12-60-ND	M 12	60	19	20	8.5	6	5.2	19	110	69
GN 251.6-M16-30-ND	M 16	30	24	26.8	10	8	6	24	145	93
GN 251.6-M16-40-ND	M 16	40	24	26.8	10	8	6	24	145	104
GN 251.6-M16-50-ND	M 16	50	24	26.8	10	8	6	24	145	118
GN 251.6-M16-60-ND	M 16	60	24	26.8	10	8	6	24	145	131
GN 251.6-M16-80-ND	M 16	80	24	26.8	10	8	6	24	145	157

* thread: nut mobility



Grub screws

with retaining magnet

SPECIFICATION

Steel

- Tensile strength class 5.8
- zinc plated, blue passivated

Material of the magnet

NdFeB **ND**

Neodymium, iron, boron

temperature resistant up to 80 °C



INFORMATION

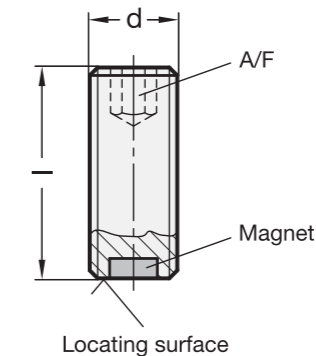
Grub screws GN 913.6 with retaining magnet are a shielded magnetic system.

Suitable e.g. as workpiece stop, with the magnet holding the workpiece in place.

- More information to retaining magnets (see page 2022)

TECHNICAL INFORMATION

- Strength values of screws (see page A20)



GN 913.6

Description	d *	l-1	A/F	Nominal adhesive forces in N	⚖
GN 913.6-M6-12-ND	M 6	12	3	2.5	2
GN 913.6-M6-16-ND	M 6	16	3	2.5	2
GN 913.6-M6-20-ND	M 6	20	3	2.5	3
GN 913.6-M6-25-ND	M 6	25	3	2.5	4
GN 913.6-M6-30-ND	M 6	30	3	2.5	5
GN 913.6-M8-16-ND	M 8	16	4	7	4
GN 913.6-M8-20-ND	M 8	20	4	7	5
GN 913.6-M8-25-ND	M 8	25	4	7	7
GN 913.6-M8-30-ND	M 8	30	4	7	8
GN 913.6-M8-40-ND	M 8	40	4	7	11
GN 913.6-M10-20-ND	M 10	20	5	11	8
GN 913.6-M10-25-ND	M 10	25	5	11	10
GN 913.6-M10-30-ND	M 10	30	5	11	13
GN 913.6-M10-40-ND	M 10	40	5	11	18
GN 913.6-M10-50-ND	M 10	50	5	11	23
GN 913.6-M12-25-ND	M 12	25	6	17	14
GN 913.6-M12-30-ND	M 12	30	6	17	18
GN 913.6-M12-40-ND	M 12	40	6	17	25
GN 913.6-M12-50-ND	M 12	50	6	17	32
GN 913.6-M12-60-ND	M 12	60	6	17	39
GN 913.6-M16-30-ND	M 16	30	8	35	32
GN 913.6-M16-40-ND	M 16	40	8	35	46
GN 913.6-M16-50-ND	M 16	50	8	35	58
GN 913.6-M16-60-ND	M 16	60	8	35	71
GN 913.6-M16-80-ND	M 16	80	8	35	97

* thread: nut mobility



Raw magnets

disc-shaped, with bore or countersunk

SPECIFICATION

Materials of the magnet:

SmCo **SC**

Samarium, Cobalt

blank

temperature resistant up to 200 °C

NdFeB **ND**

Neodymium, iron, boron

temperature resistant up to 80 °C

INFORMATION

Raw magnets GN 55.1 are unshielded disc-shaped (annular) magnets.

Owing to their vast range of different magnet materials and sizes, they are suitable for virtually universal use. They are mostly attached by gluing.

When used without air gap, individual raw magnets always have lower adhesive forces than a magnet system in which shielding and magnetic return enormously intensify the force acting at the adhesion surface. Depending on the air gap between magnet and mating component, individual raw magnets - unlike magnet systems - can have substantially higher adhesive forces.

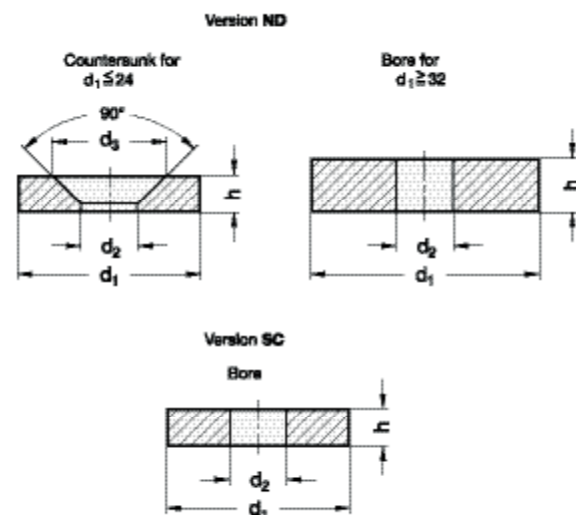
In the event that no suitable retaining magnets / magnet systems are available, raw magnets may be used in combination with appropriate holding constructions to build up highly specific magnet systems.

- More information to retaining magnets (see page 2022)



ON REQUEST

- made of hard ferrite (HF)



GN 55.1

Description	d1	d2 ±0.1	h ±0.1	d3 +0.5	Nominal adhesive forces in N	Packaging units	⚖
GN 55.1-ND-12-3,5-3	12 ±0.1	3.5	3	6.6	18	20	3
GN 55.1-ND-15-4,5-3,5	15 ±0.1	4.5	3.5	9.3	29	20	4
GN 55.1-ND-18-4,5-4	18 ±0.1	4.5	4	9.3	41	10	8
GN 55.1-ND-24-5,5-4	24 ±0.1	5.5	4	11.5	66	10	14
GN 55.1-ND-32-10,5-2	32 ±0.1	10.5	2	-	42	5	16
GN 55.1-ND-38-12-4	38 ±0.1	12	4	-	110	2	45
GN 55.1-ND-48-15-5	48 ±0.2	15	5	-	165	1	83
GN 55.1-ND-56-15-6	56 ±0.2	15	6	-	230	1	137
GN 55.1-SC-15-8-3,5	15 ±0.1	8	3.5	-	23	20	4
GN 55.1-SC-18-8-4	18 ±0.1	8	4	-	31	10	7
GN 55.1-SC-24-11,5-4	24 ±0.1	11.5	4	-	51	10	12
GN 55.1-SC-32-10-4	32 ±0.1	10	4	-	67	5	27



Raw magnets

disc-shaped, without bore

SPECIFICATION

Materials of the magnet:

SmCo **SC**

Samarium, cobalt

blank

temperature resistant up to 200 °C

NdFeB **ND**

Neodymium, iron, boron

nickel-plated

temperature resistant up to 80 °C

INFORMATION

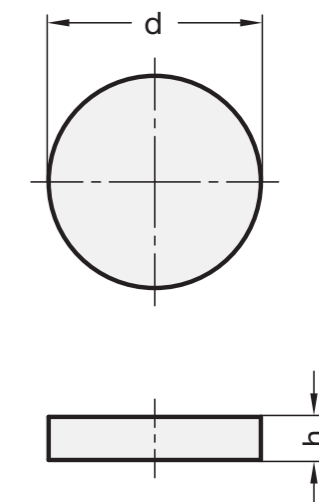
Raw magnets GN 55.2 are unshielded disc-shaped magnets.

Owing to their vast range of different magnet materials and sizes, they are suitable for virtually universal use. They are mostly attached by gluing.

When used without air gap, individual raw magnets always have lower adhesive forces than a magnet system in which shielding and magnetic return enormously intensify the force acting at the adhesion surface. Depending on the air gap between magnet and mating component, individual raw magnets - unlike magnet systems - can have substantially higher adhesive forces.

In the event that no suitable retaining magnets / magnet systems are available, raw magnets may be used in combination with appropriate holding constructions to build up highly specific magnet systems.

- More information to retaining magnets (see page 2022)



ON REQUEST

- made of hard ferrite (HF)

GN 55.2

Description	d ±0.1	h ±0.1	Nominal adhesive forces in N	Packaging units	⚖
GN 55.2-ND-4-3	4	3	4	20	1
GN 55.2-ND-5-3	5	3	5	20	1
GN 55.2-ND-6-3	6	3	7.5	20	1
GN 55.2-ND-8-3	8	3	13	20	1
GN 55.2-ND-10-3	10	3	15	20	2
GN 55.2-ND-12-3	12	3	20	20	3
GN 55.2-ND-15-3	15	3	28	20	4
GN 55.2-ND-18-3	18	3	35	10	7
GN 55.2-ND-20-3	20	3	42	10	9
GN 55.2-ND-24-3	24	3	55	10	12
GN 55.2-SC-4-3	4	3	2.5	20	1
GN 55.2-SC-5-3	5	3	3.5	20	1
GN 55.2-SC-6-3	6	3	4	20	1
GN 55.2-SC-8-3	8	3	8	20	1
GN 55.2-SC-10-3	10	3	10	20	2
GN 55.2-SC-12-3	12	3	11	10	4
GN 55.2-SC-15-3	15	3	16	10	6
GN 55.2-SC-18-3	18	3	25	10	8
GN 55.2-SC-24-3	24	3	36	5	12



Raw magnets

rod-shaped

SPECIFICATION

Material of the magnet
AlNiCo **AN**
Aluminium, nickel, cobalt
blank

INFORMATION

Raw magnets GN 55.3 are unshielded rod-shaped magnets. Owing to their vast range of different magnet materials and sizes, they are suitable for virtually universal use. They are mostly attached by gluing.

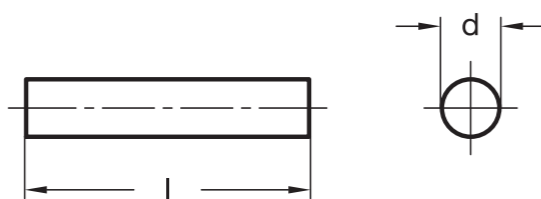
When used without air gap, individual raw magnets always have lower adhesive forces than a magnet system in which shielding and magnetic return enormously intensify the force acting at the adhesion surface. Depending on the air gap between magnet and mating component, individual raw magnets - unlike magnet systems - can have substantially higher adhesive forces.

In the event that no suitable retaining magnets / magnet systems are available, raw magnets may be used in combination with appropriate holding constructions to build up highly specific magnet systems.

- More information to retaining magnets (see page 2022)

ON REQUEST

- special lengths



GN 55.3

Description	d 0/-0.2	l ±0.1	Nominal adhesive forces in N	Temperature resistance in °C	Packaging units	⚖
GN 55.3-AN-3-10	3	10	1.1	450	10	4
GN 55.3-AN-3-12	3	12	1.3	450	10	4
GN 55.3-AN-4-16	4	16	1.9	450	10	5
GN 55.3-AN-4-20	4	20	2	450	10	6
GN 55.3-AN-5-20	5	20	2.3	450	10	7
GN 55.3-AN-6-15	6	15	2.8	350	5	6
GN 55.3-AN-6-24	6	24	2.8	450	5	8
GN 55.3-AN-6-30	6	30	2.8	450	5	9
GN 55.3-AN-8-25	8	25	3.8	450	5	12
GN 55.3-AN-8-32	8	32	3.8	450	5	14
GN 55.3-AN-10-20	10	20	5	350	5	15
GN 55.3-AN-10-40	10	40	7	450	1	29
GN 55.3-AN-12-40	12	40	8	450	1	40
GN 55.3-AN-12-48	12	48	8	450	1	45
GN 55.3-AN-15-30	15	30	10	350	1	45
GN 55.3-AN-15-60	15	60	11	450	1	90
GN 55.3-AN-20-40	20	40	17	350	1	103
GN 55.3-AN-34-80	34	80	61	350	1	558



Raw magnets

block-shaped

SPECIFICATION

Materials of the magnet:

SmCo **SC**
Samarium, cobalt
blank
temperature resistant up to 200 °C

NdFeB **ND**
Neodymium, iron, boron
nickel-plated
temperature resistant up to 80 °C

INFORMATION

Raw magnets GN 55.4 are unshielded block-shaped magnets.

Owing to their vast range of different magnet materials and sizes, they are suitable for virtually universal use. They are mostly attached by gluing.

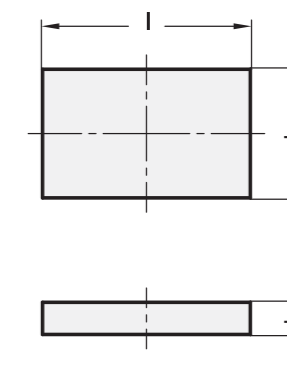
When used without air gap, individual raw magnets always have lower adhesive forces than a magnet system in which shielding and magnetic return enormously intensify the force acting at the adhesion surface. Depending on the air gap between magnet and mating component, individual raw magnets - unlike magnet systems - can have substantially higher adhesive forces.

In the event that no suitable retaining magnets / magnet systems are available, raw magnets may be used in combination with appropriate holding constructions to build up highly specific magnet systems.

- More information to retaining magnets (see page 2022)

ON REQUEST

- in other dimensions
- made of hard ferrite (HF)



GN 55.4

Description	l ±0.1	b ±0.1	h ±0.1	Nominal adhesive forces in N	Packaging units	⚖
GN 55.4-SC-7,5-4-1,5	7.5	4	1.5	3.4	10	1
GN 55.4-SC-7,5-6-2	7.5	6	2	5	10	1
GN 55.4-SC-10-7,5-2	10	7.5	2	7.5	10	2
GN 55.4-SC-12-9,5-2,5	12	9.5	2.5	11	5	4
GN 55.4-SC-16-12,5-2,5	16	12.5	2.5	15	5	4
GN 55.4-SC-18-16,5-4	18	16.5	4	29	5	12
GN 55.4-SC-26-20,3-5	26	20.3	5	51	1	30
GN 55.4-SC-33-26,3-6,5	33	26.3	6.5	85	1	58
GN 55.4-ND-7,5-4-1,5	7.5	4	1.5	5	10	1
GN 55.4-ND-7,5-6-2	7.5	6	2	8	10	1
GN 55.4-ND-10-7,5-2	10	7.5	2	11	10	2
GN 55.4-ND-12-9,5-2,5	12	9.5	2.5	17	5	2
GN 55.4-ND-16-12,5-2,5	16	12.5	2.5	24	5	4
GN 55.4-ND-18-16,5-4	18	16.5	4	50	5	10
GN 55.4-ND-26-20,3-5	26	20.3	5	77	1	26
GN 55.4-ND-33-26,3-6,5	33	26.3	6.5	125	1	56



Retaining magnets

for profile systems

SPECIFICATION

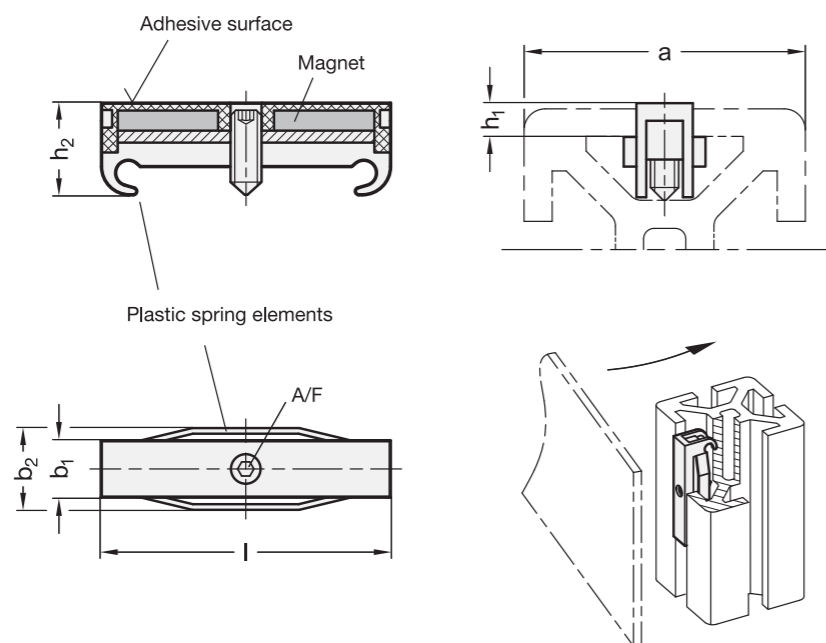
Plastic
 Technopolymer (Polyamide PA)
 black, matt **SW**
 Material of the magnet
 NdFeB
 Neodymium, iron, boron
 temperature resistant up to 80 °C
 Steel insert, grub screw
 zinc plated, blue passivated

INFORMATION

With GN 56 retaining magnets doors, covers or even tools and accessories can simply be attached to profile systems using magnets.

Thanks to the side-mounted plastic spring elements the retaining magnet can be introduced into a profile nut at any point. When affixed this way, the magnet holds with a multiple of its magnet nominal holding force in the nut. If necessary, the retaining magnet can be taken out of the nut again with a suitable screw driver via the recesses on the front.

Lightly turning the threaded pin against the groove base stops the retaining magnet from moving in the direction of the nut. Additional protection against sideward movement can be achieved with nuts for T-nuts GN 506 (see page 982), for example.



GN 56

Description	b1	a	b2	h1	h2	l	A/F	Nominal adhesive forces in N	⚖
GN 56-6-30-SW	6	30	9.5	3	10.2	41	1.5	10	6
GN 56-8-30-SW	8	30	11.6	2.3	9.3	41	2	18	6
GN 56-8-40-SW	8	40	12.5	4.8	12.9	41	2	18	6
GN 56-10-45-SW	10	45	13.2	6	13.2	41	2	18	10



Holding discs

Steel / Stainless Steel, for retaining magnets

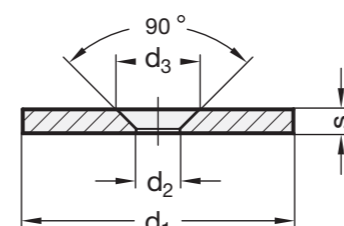
SPECIFICATION

Type
 - Type **A**: flat
 Version in Steel **ST**
 zinc plated
 Version in Stainless Steel **NI**
 magnetic

INFORMATION

Holding discs GN 70 are used as companion parts for retaining magnets, e.g. if a magnet is to be used in connection with non-magnetic materials.

They can be fixed with countersunk screws (e.g. DIN 7991), but also with any commercial wood or sheet metal countersunk screws.



GN 70

Description	d1	d2 +0.3	d3	s	⚖
GN 70-12-A-ST	12 ±0.1	4	6.5 -0.2/+0.5	2	4
GN 70-17-A-ST	17 ±0.1	6	8.5 +0.5	2	6
GN 70-27-A-ST	27 ±0.2	6	11 +0.5	3	15
GN 70-34-A-ST	34 +0.3/+0.7	6	11 +0.5	3	23
GN 70-45-A-ST	45 +0.1/+0.5	5.5	11 +0.5	3	39
GN 70-64-A-ST	64 ±0.3	6	11 +0.5	3	77

GN 70-NI

STAINLESS STEEL

Description	d1	d2 ±0.3	d3 +0.5	s	⚖
GN 70-27-A-NI	27 +0.1/+0.5	5.5	11	3	15
GN 70-45-A-NI	45 ±0.2	6	8.5	2	27



Adhesive discs

self-adhesive, for retaining magnets

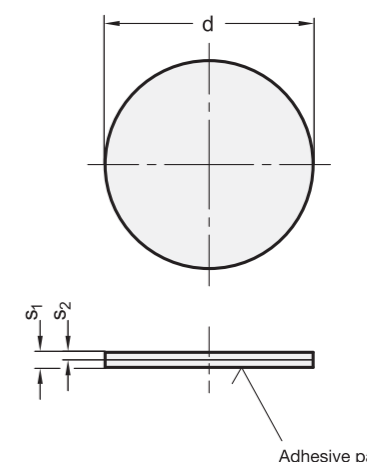
SPECIFICATION

Steel
 - zinc plated, blue passivated **ZB**
 - zinc plated, blue passivated, white laquered **WS**
 Adhesive pad
 Scotch-Mount™ 4032
 - doubled-sided
 - with polyurethane foam backing

INFORMATION

Adhesive discs GN 70.1 are used as counter piece for retaining magnets if a magnet is to be used on a non-magnetic surface, for instance.

After pulling off the protective film from the adhesive pad at the back, they can be attached to any suitable and clean surfaces.



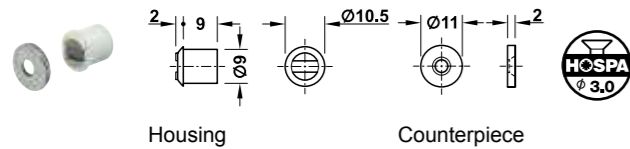
GN 70.1

Description	d	s1	s2	⚖
GN 70.1-20-ZB	20	2	1	3
GN 70.1-20-WS	20	2	1	3
GN 70.1-30-ZB	30	2	1	6
GN 70.1-30-WS	30	2	1	6
GN 70.1-40-ZB	40	2	1	10
GN 70.1-40-WS	40	2	1	10
GN 70.1-60-ZB	60	2.5	1.5	35
GN 70.1-60-WS	60	2.5	1.5	35



For glue fixing

→ Pull 1.8 kg

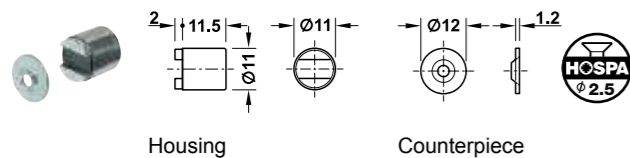


- > Material: Housing: Plastic, counterpiece: Steel
- > Version: Rigid housing and counterpiece
- > Installation: Housing for glue fixing, counterpiece for screw fixing

Colour	Cat. No.
Housing: White	C246.00.708
Housing: Brown	C246.00.100

Packing: 1 or 60 pieces

→ Pull 2 kg

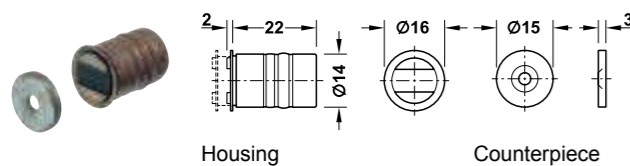


- > Material: Housing: Brass, counterpiece: Steel
- > Version: Rigid housing and counterpiece
- > Installation: Housing for glue fixing, counterpiece for screw fixing

Finish	Cat. No.
Housing: Nickel plated	C246.12.002

Packing: 1 or 100 pieces

→ Pull 5 kg



- > Material: Housing: Brass, counterpiece: Steel
- > Version: Rigid housing and counterpiece
- > Installation: Housing for glue fixing, counterpiece for screw fixing

Finish	Cat. No.
Housing: Nickel plated	C246.02.211

Packing: 1 or 20 pieces

For press fitting

→ Pull 0.4 kg



- > Material: Housing: Plastic
- > Version: Housing with enclosed surface and inset magnets, magnets not visible, extremely silent closing
- > Installation: For press fitting

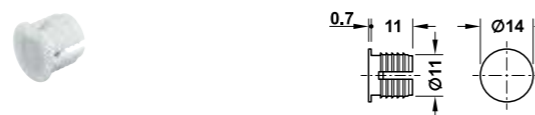
Colour	Cat. No.
Housing: White	C246.01.701
Housing: Black	C246.01.301
Housing: Grey	C246.01.501

Packing: 1 or 100 pieces

Order reference

Please order counterpiece (C246.01.910) separately.

→ Pull 1.4 kg



- > Material: Housing: Plastic
- > Version: Housing with enclosed surface and inset magnets, magnets not visible, extremely silent closing
- > Installation: For press fitting

Colour	Cat. No.
Housing: White	C246.01.702
Housing: Black	C246.01.302
Housing: Grey	C246.01.502

Packing: 1 or 100 pieces

Order reference

Please order counterpiece (C246.01.910) separately.

Counterpiece



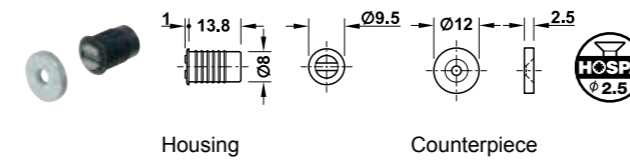
- > Material: Steel
- > Version: With applied self-adhesive film
- > Installation: For sticking on

Finish	Cat. No.
Galvanized	C246.01.910

Packing: 1 or 100 pieces



→ Pull 2 kg

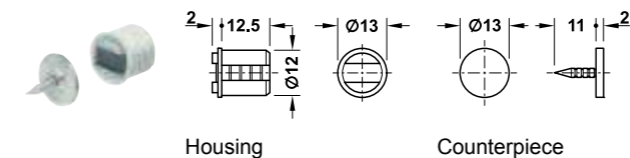


- > Material: Housing: Plastic, counterpiece: Steel
- > Version: Rigid housing and counterpiece
- > Installation: Housing for press fitting, counterpiece for screw fixing

Colour	Cat. No.
Housing: Black	C246.01.312

Packing: 1, 10 or 100 pieces

→ Pull 2-3 kg

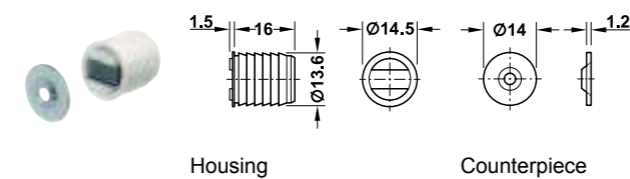


- > Material: Housing: Plastic, counterpiece: Steel
- > Version: Rigid housing, movable counterpiece
- > Installation: Housing for press fitting, counterpiece for knocking in

Colour	Cat. No.
Housing: White	C246.43.758

Packing: 1 or 200 pieces

→ Pull 2.5 - 3.5 kg

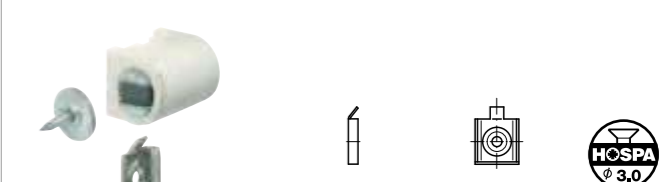


- > Material: Housing: Plastic, counterpiece: Steel
- > Version: Rigid housing and counterpiece
- > Installation: Housing for press fitting, counterpiece for screw fixing

Colour	Cat. No.
Housing: White	C246.03.709
Housing: Brown	C246.03.101

Packing: 1 or 50 pieces

→ Pull 3-4 kg



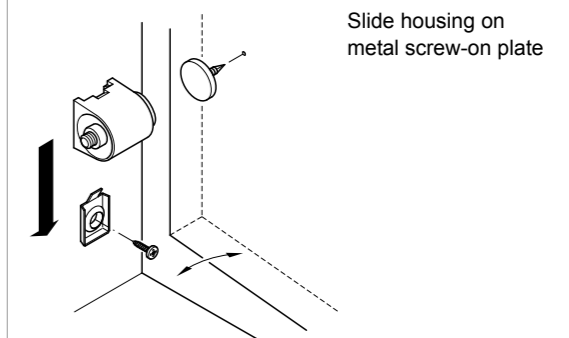
- > Material: Housing: Plastic, counterpiece: Steel
- > Version: With screw-on plate, rigid housing, movable counterpiece
- > Adjustment facility: Magnet insert can be adjusted by approx. +4 mm by turning
- > Installation: Housing for screw fixing with screw-on plate, counterpiece for knocking in

Colour	Cat. No.
Housing: White	C246.13.720
Housing: Brown	C246.13.120
Housing: Silver coloured	C246.13.920

Packing: 1 or 50 pieces

- > Material: Housing: Plastic, counterpiece: Steel
- > Version: With screw-on plate, rigid housing, movable counterpiece
- > Adjustment facility: Magnet insert can be adjusted by approx. +4 mm by turning
- > Installation: Housing for screw fixing with screw-on plate, counterpiece for knocking in

Installation



Supplied with

- 1 housing
- 1 counterpiece
- 1 metal screw-on plate

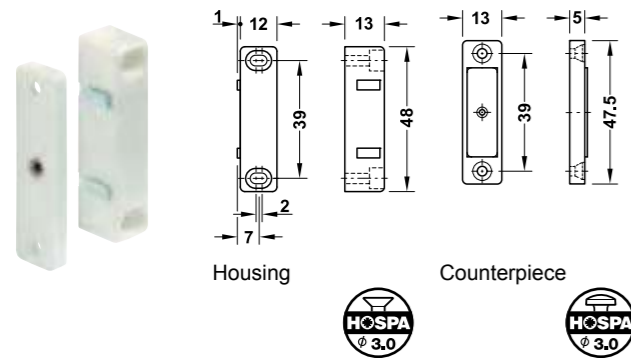
Colour	Cat. No.
Housing: White	C246.13.720
Housing: Brown	C246.13.120
Housing: Silver coloured	C246.13.920

Packing: 1 or 50 pieces



For wooden doors

→ Pull 3–4 kg

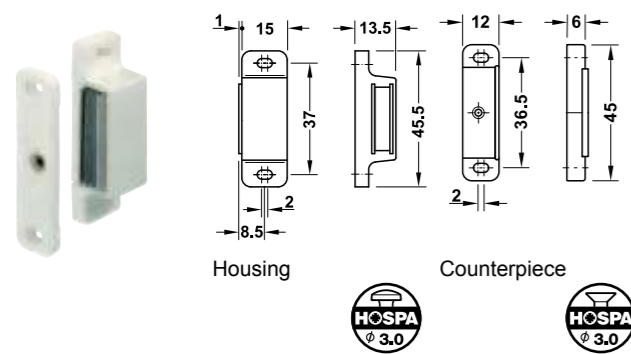


- > Material: Housing and counterpiece: Plastic
- > Version: Rigid housing, movable counterpiece
- > Adjustment facility: With slot in housing
- > Installation: Housing and counterpiece for screw fixing

Colour	Cat. No.
White	C246.33.707
Brown	C246.33.109

Packing: 1 or 50 pieces

→ Pull 3–4 kg or 4–5 kg

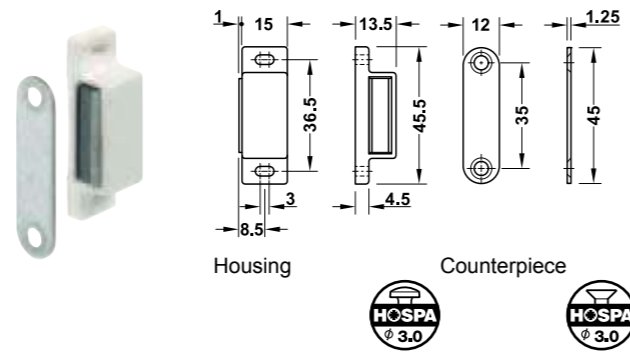


- > Material: Housing and counterpiece: Plastic
- > Version: Movable housing and counterpiece
- > Adjustment facility: With slot in housing and counterpiece
- > Installation: Housing and counterpiece for screw fixing

Pull kg	Colour	Cat. No.
3–4	White	C246.26.711
	Brown	C246.26.113
4–5	White	C246.29.712
	Brown	C246.29.114

Packing: 1 or 50 pieces

→ Pull 3–4 kg or 4–5 kg

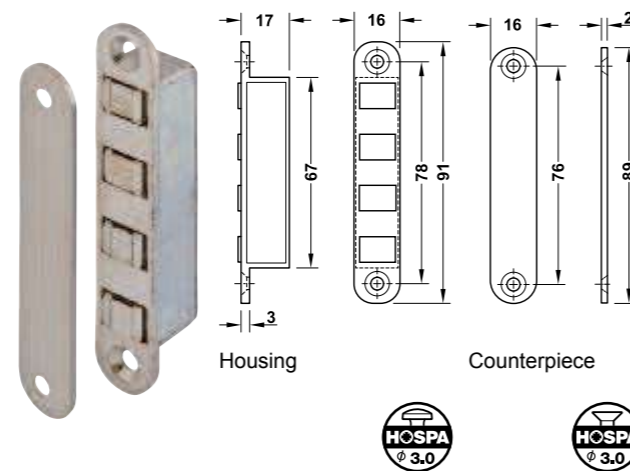


- > Material: Housing: Plastic, counterpiece: Steel
- > Version: Movable housing, rigid counterpiece
- > Adjustment facility: With slot in housing
- > Installation: Housing and counterpiece for screw fixing

Pull kg	Colour	Cat. No.
3–4	White	C246.26.720
	Brown	C246.26.122
4–5	White	C246.29.703
	Brown	C246.29.105
	Black	C246.29.301

Packing: 1 or 50 pieces

→ Pull 8 kg



- > Material: Housing: Zinc alloy, counterpiece: Metal
- > Version: Movable housing, rigid counterpiece
- > Installation: Housing and counterpiece for recess mounting

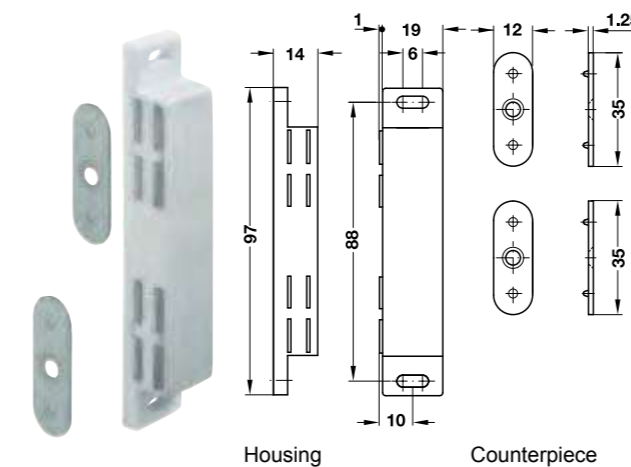
Finish	Cat. No.
Nickel plated	C246.75.623

Packing: 1 or 10 pieces

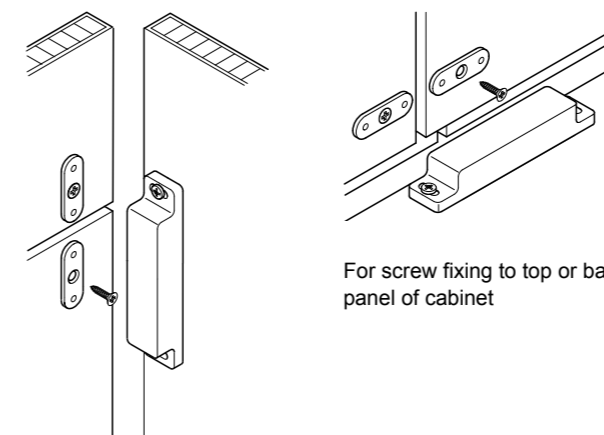


For wooden doors

→ Pull 2 x 3–4 kg



Installation



For screw fixing to top or base panel of cabinet

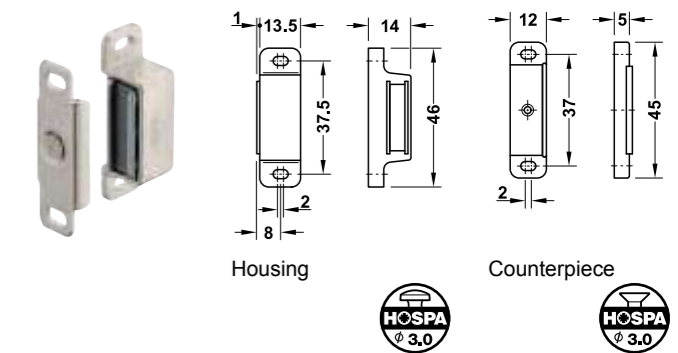
For screw fixing to side panel of cabinet

- > Material: Housing: Plastic, counterpieces: Steel
- > Version: Movable housing, rigid counterpieces
- > Adjustment facility: With slot in the housing
- > Installation: Housing and counterpieces for screw fixing

Colour	Cat. No.
White	C246.84.713

Packing: 1 or 50 pieces

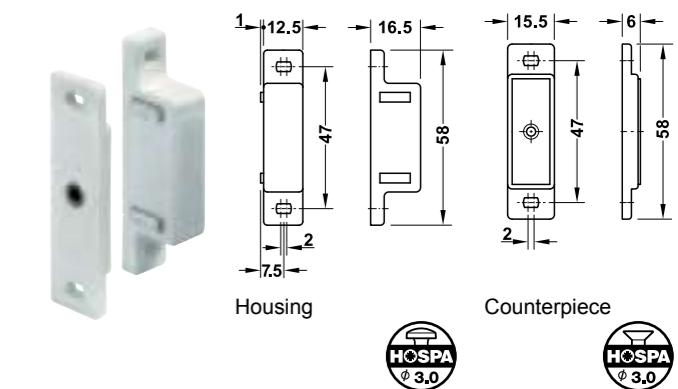
→ Pull 4 kg



- > Material: Housing: Zinc alloy, counterpiece: Metal
- > Version: Movable housing and counterpiece
- > Adjustment facility: With slot in housing and counterpiece
- > Installation: Housing and counterpiece for screw fixing

Finish		Packing pieces	Cat. No.
Nickel plated	Housing	1, 50 or 200	C246.94.701
	Counterpiece	1 or 200	C246.94.702
Brass plated	Housing	1 or 200	C246.94.801
	Counterpiece	1 or 200	C246.94.802

→ Pull 4–5 kg



- > Material: Housing and counterpiece: Plastic
- > Version: Rigid housing, movable counterpiece
- > Adjustment facility: With slot in housing and counterpiece
- > Installation: Housing and counterpiece for screw fixing

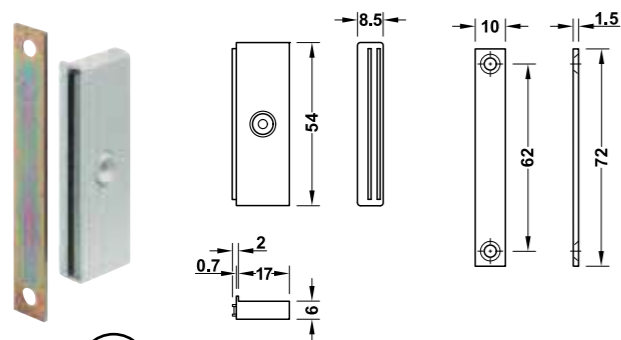
Colour	Cat. No.
White	C246.65.709
Brown	C246.65.101

Packing: 1 or 50 pieces



For wooden doors

→ Pull 5 kg



Housing

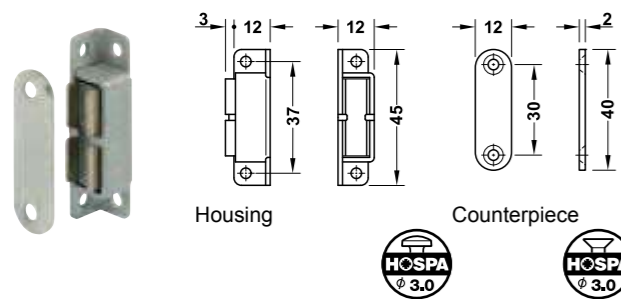
Counterpiece

- > Material: Housing: Plastic, counterpiece: Steel
- > Version: Movable housing, rigid counterpiece
- > Adjustment facility: Adjustable with stop edge
- > Installation: Housing and counterpiece for screw fixing

Colour	Cat. No.
White	C246.50.708
Brown	C246.50.100

Packing: 1 or 20 pieces

→ Pull 5 kg



Housing

Counterpiece

- > Area of application: Heat resistant up to 300 °C
- > Material: Housing: Aluminium, counterpiece: Steel
- > Version: Movable housing, rigid counterpiece
- > Installation: Housing and counterpiece for screw fixing

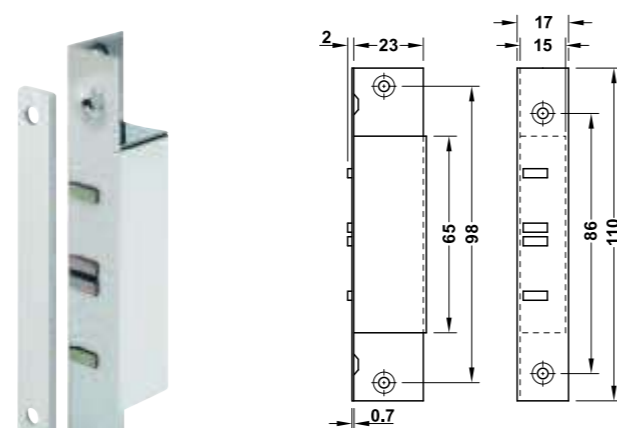
Note

The pull force is reduced by 1 % for every 5 °C temperature increase.
After cooling down, the magnet regains its original pull force.
When used with steel doors or lids, the counterpiece is not necessary.

Finish	Cat. No.
Silver coloured anodized	C246.92.000

Packing: 1 or 12 pieces

→ Pull 10 kg, for interior doors

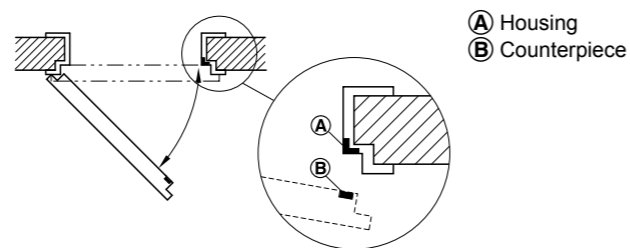


Housing

Counterpiece

- > Area of application: For rebated interior doors (instead of lock)
- > Material: Housing and counterpiece: Steel
- > Version: Movable housing, rigid counterpiece
- > Installation: Housing and counterpiece for screw fixing

Installation



A Housing

B Counterpiece

Finish/colour	Cat. No.
Housing: Polished chrome plated, counterpiece: White galvanized	C246.75.607

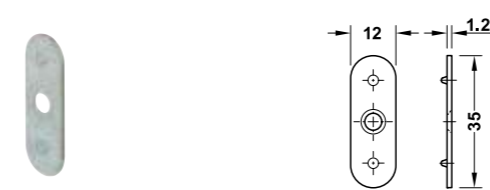
Packing: 1 or 10 pieces



For wooden doors

For screw fixing

→ Counterpiece



- > Material: Steel
- > Installation: For screw fixing

Finish	Cat. No.
Galvanized	C246.26.793

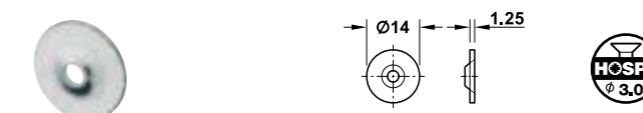
Packing: 1 or 500 pieces



- > Material: Steel
- > Installation: For screw fixing

Finish	Cat. No.
Galvanized	C246.26.991

Packing: 1 or 1000 pieces



- > Material: Steel
- > Installation: For screw fixing

Finish	Cat. No.
Galvanized	C246.03.790

Packing: 1 or 100 pieces



- > Material: Steel
- > Installation: For screw fixing

Finish	Cat. No.
Galvanized	C246.96.090

Packing: 60 pieces



- > Material: Steel
- > Installation: For screw fixing

Finish	Cat. No.
Galvanized	C246.86.901

Packing: 1 or 50 pieces

For knocking in

→ Counterpiece



- > Material: Steel
- > Installation: For knocking in

Finish	Cat. No.
Galvanized	C246.08.911

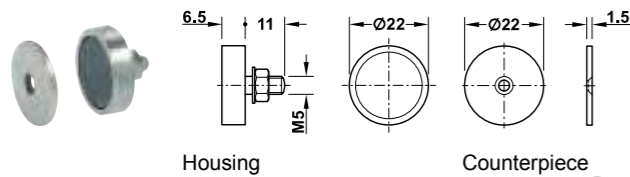
Packing: 1 or 1000 pieces



For metal doors

For screw fixing

→ Pull 3 kg

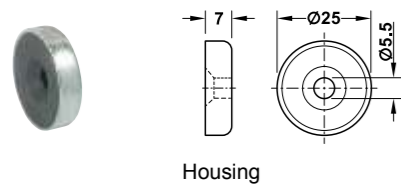


- > Material: Housing and counterpiece: Steel
- > Version: Rigid housing and counterpiece
- > Installation: Housing for screw fixing with M5 externally threaded pin

	Pull kg	Cat. No.
Magnet including counterpiece	3	C246.96.008

Packing: 1 or 12 pieces

→ Pull 3.6 kg



- > Material: Housing and counterpiece: Steel
- > Finish: Galvanized
- > Installation: For screw fixing with M5 countersunk head screw

	Pull kg	Cat. No.
Housing	3.6	C246.86.025

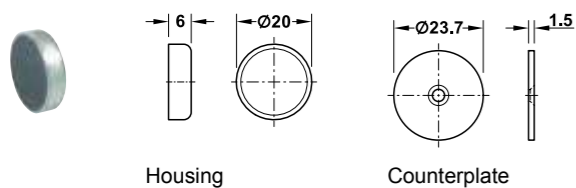
Packing: 1 or 50 pieces

Order reference

Please order counterpiece (246.86.901) separately.

For glue fixing

→ Pull 3 kg



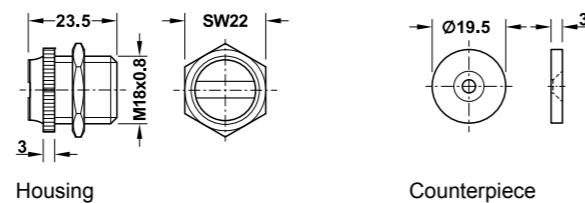
- > Material: Housing and counterpiece: Steel
- > Finish: Galvanized
- > Installation: For glue fixing

	Pull kg	Packing pieces	Cat. No.
Housing	3	1 or 20	C246.88.020
Counterpiece	-	1 or 10	C246.86.900

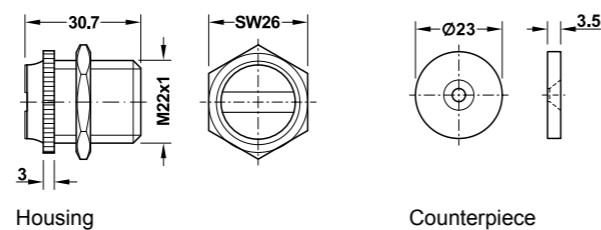
→ Pull 7 kg or 10 kg



Pull 7 kg



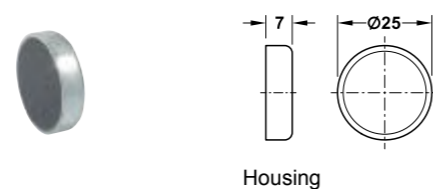
Pull 10 kg



- > Material: Housing and counterpiece: Steel
- > Version: Rigid housing and counterpiece
- > Installation: For screw fixing

	Pull kg	Cat. No.
Magnet including counterpiece	7	C246.95.010
	10	C246.95.020

→ Pull 4 kg

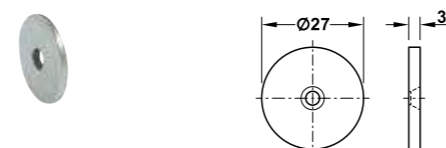


- > Material: Steel
- > Finish: Galvanized
- > Installation: For glue fixing

	Pull kg	Cat. No.
Housing	4	C246.88.025

Packing: 1 or 20 pieces

Counterpiece



- > Material: Steel
- > Finish: Galvanized
- > Installation: For screw fixing

	Cat. No.
Counterpiece	C246.86.901



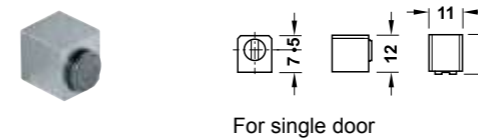
For glass doors

For glue fixing

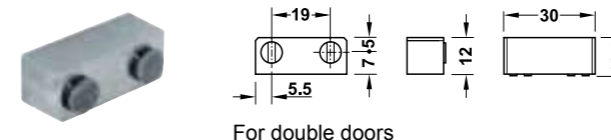
→ Pull 1.8 kg



Magnetic catch for double doors



For single door



For double doors

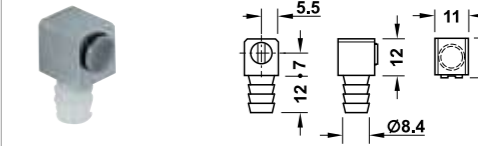
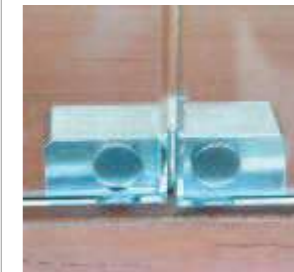
- > Area of application: For all-glass constructions
- > Material: Stainless steel
- > Finish: Satin
- > Installation: For glue fixing (UV glass adhesive bond)
- > Not suitable for laminated glass

	Cat. No.
For single door	C245.91.000
For double doors	C245.91.010

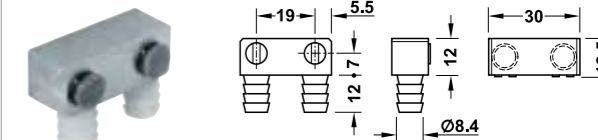
Packing: 1 piece

For press fitting

→ Pull 1.8 kg



For single door



For double doors

- > Area of application: For glass and wood constructions
- > Material: Stainless steel
- > Finish: Satin
- > Installation: For press fitting into Ø 8 mm drill hole
- > Not suitable for laminated glass

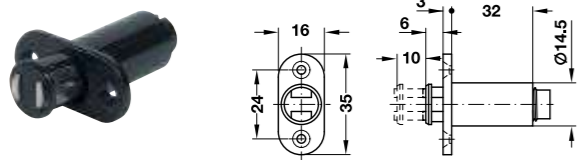
	Cat. No.
For single door	C246.52.000
For double doors	C246.52.010

Packing: 1 piece

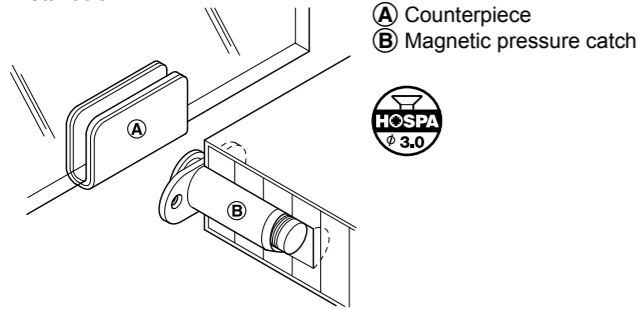


For screw fixing

→ Pull 1.4 kg



Installation



- (A) Counterpiece
- (B) Magnetic pressure catch

- > Area of application: For single glass doors
- > Material: Plastic
- > Installation: For mounting in drilled hole and for screw fixing

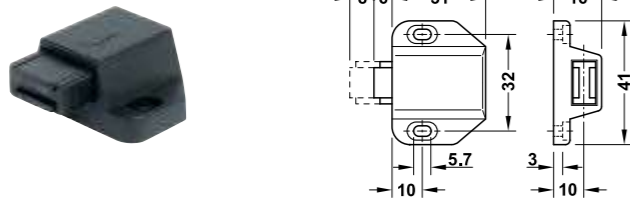
Colour	Cat. No.
Black	C245.62.311

Packing: 1 or 100 pieces

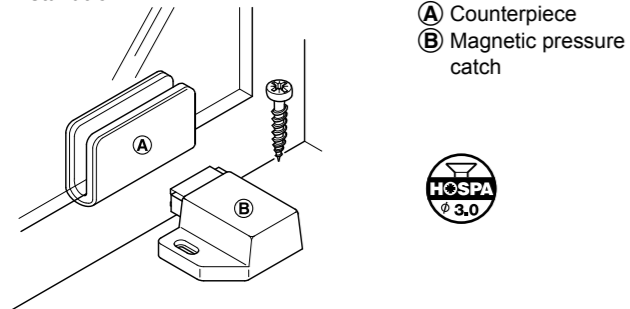
Order reference

Please order counterpieces separately.

→ Pull 1.8 kg



Installation



- (A) Counterpiece
- (B) Magnetic pressure catch

- > Area of application: For single glass doors
- > Material: Plastic
- > Adjustment facility: With slot
- > Installation: For screw fixing

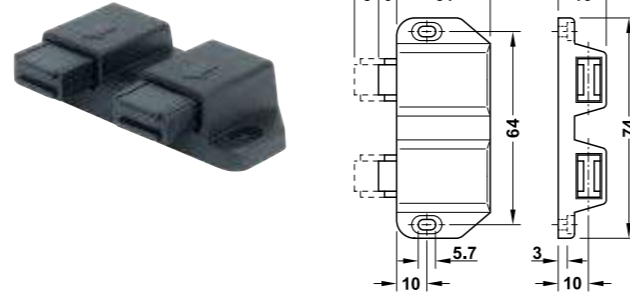
Colour	Cat. No.
White	C245.67.710
Black	C245.67.310

Packing: 1 or 100 pieces

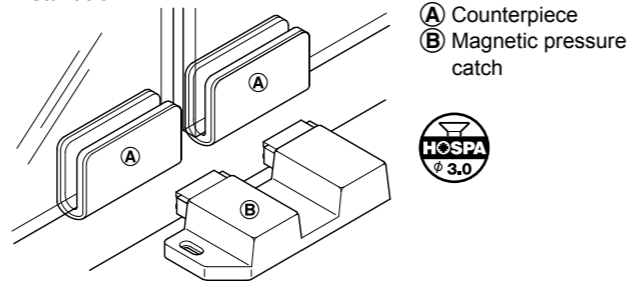
Order reference

Please order counterpiece separately.

→ Pull 2.5 kg



Installation



- (A) Counterpiece
- (B) Magnetic pressure catch

- > Area of application: For double glass doors
- > Material: Plastic
- > Adjustment facility: With slot
- > Installation: For screw fixing

Colour	Cat. No.
White	C245.67.720
Black	C245.67.320

Packing: 1 or 50 pieces

Order reference

Please order counterpieces separately.

Counterpieces on the next page

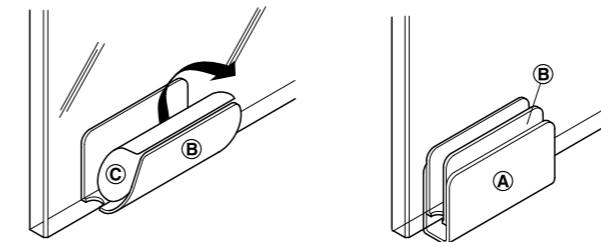


For clamp fixing

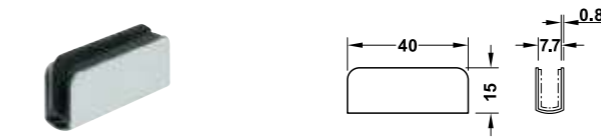
→ Counterpiece

- > Material: Steel
- > For glass thickness: 4–6 mm
- > Installation: For clamp fixing, with self-adhesive intermediate layer made of foam material

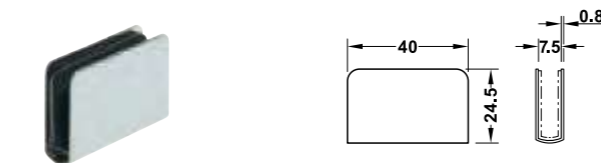
Installation



- (A) Counterpiece
- (B) Intermediate layer made of foam material
- (C) Protective foil for adhesive film

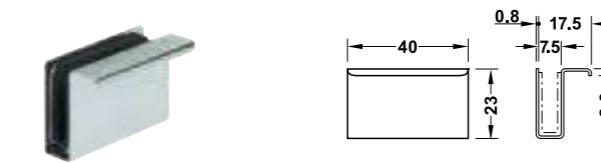


Finish/colour	Packing pieces	Cat. No.
Chrome plated	1 or 400	C245.66.201
Nickel plated	1 or 400	C245.66.600
Black	1 or 20	C245.66.309



Finish/colour	Cat. No.
Chrome plated	C245.66.211
Black	C245.66.311

Packing: 1 or 200 pieces

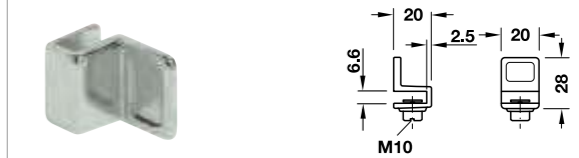


> Version: With handle

Finish/colour	Cat. No.
Chrome plated	C245.66.221
Black	C245.66.321

Packing: 1 or 200 pieces

→ Glass door handle



- > Material: Zinc alloy
- > Version: With steel clamping screw and attached plastic buffer
- > For glass thickness: 4–6 mm
- > Installation: For clamp fixing
- > Fixing material supplied

Finish	Cat. No.
Polished nickel plated	C154.22.717
Matt black	C154.22.313

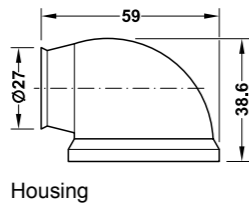
Packing: 1 or 100 pieces



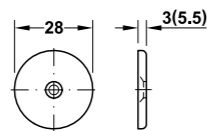
Door holders

For screw fixing

→ Pull 10 kg or 20 kg
For floor mounting



Housing

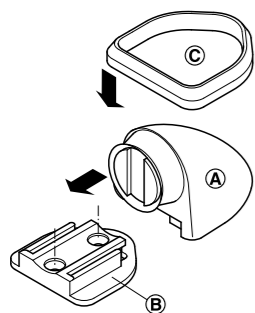


Counterpiece

Dim. in brackets apply to pull 20 kg



Installation

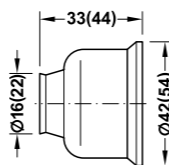


Screw housing base (B) on workpiece, then slide housing (A) onto housing base (B). Clip on cover (C) for fixing in place.
Screw counterpiece on door.

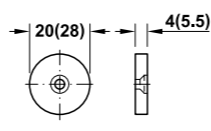
- > Area of application: Floor
- > Material: Housing: Plastic, counterpiece: Steel
- > Version: Rigid housing and counterpiece
- > Installation: For fixing screws to the floor

Pull kg	Colour	Packing pieces	Cat. No.
10	Housing: Grey	1	C246.98.510
20	Housing: Brown	1 or 10	C246.98.100
	Housing: Grey	1 or 10	C246.98.500

→ Pull 10 kg or 20 kg
For wall mounting



Housing

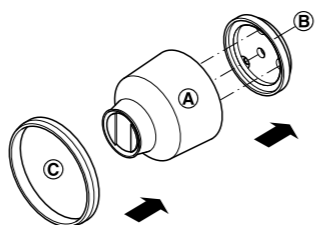


Counterpiece

Dim. in brackets apply to pull 20 kg



Installation



Screw housing base (B) on workpiece, then mount housing (A) onto housing base (B). Clip on cover (C) for fixing in place.
Screw counterpiece on door.

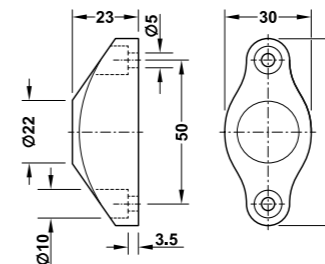
- > Area of application: Wall (indoor or outdoor)
- > Material: Housing: Plastic, counterpiece: Steel
- > Version: Rigid housing and counterpiece
- > Installation: For screw fixing to the wall

Pull kg	Colour	Packing pieces	Cat. No.
10	Housing: Brown	1 or 10	C246.99.107
	Housing: Grey	1	C246.99.500
20	Housing: Grey	1 or 10	C246.99.510



Door holders

→ Pull 6 kg
For wall mounting

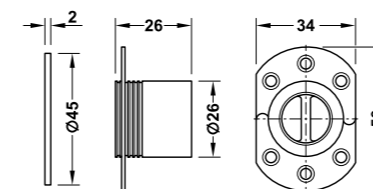


- > Area of application: Suitable for use up to 60 °C
- > Material: Rubber
- > Version: Magnet moulded in rubber housing, for individual use, rigid housing
- > Installation: For screw fixing to the wall

Colour	Cat. No.
Black	C246.87.122

Packing: 1 or 20 pieces

→ Pull 10.5 kg
For wall mounting



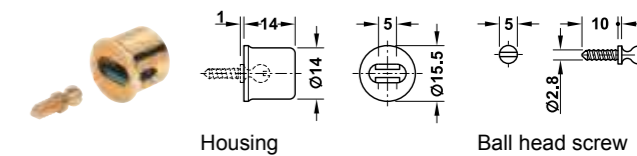
- > Area of application: Suitable for use up to 60 °C
- > Material: Housing: Plastic, mounting plates: Steel, counterpiece: Steel
- > Version: Split mounting plate, rigid housing and counterpiece
- > Installation: Housing for screw fixing, counterpiece for glue fixing

Colour	Cat. No.
Black/silver coloured	C246.87.134

Packing: 1 or 20 pieces

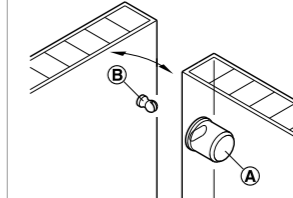
For press fitting

→ For wooden doors



- > Material: Catch and spring clip: Steel, ball head screw: Brass
- > Finish: Catch: Brass plated, ball head screw: Bright

Installation

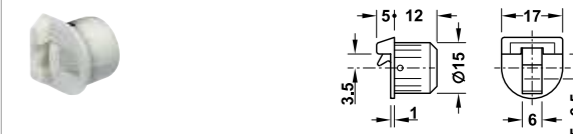


- (A) Housing
- (B) Ball head screw

Installation	Cat. No.
For press fitting	C241.90.501

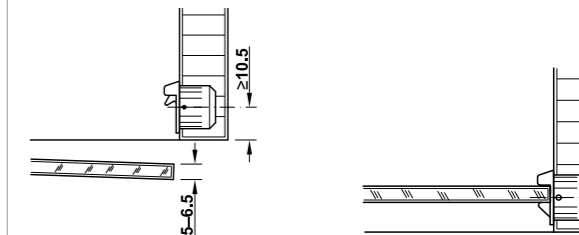
Packing: 1 piece

→ For glass doors

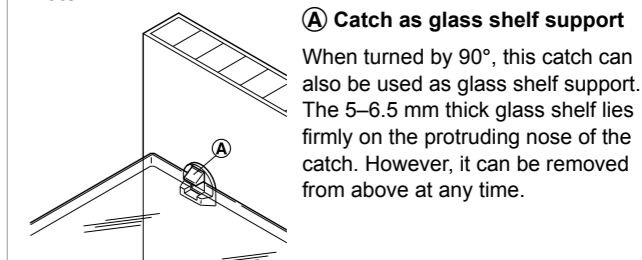


- > Area of application: For glass doors, also suitable as glass shelf support
- > For glass thickness: 5–6.5 mm
- > Material: Plastic
- > Version: With longitudinal ribs, therefore non-twisting
- > Installation: For press fitting into Ø 15 mm drill hole

Installation



Note



(A) Catch as glass shelf support

When turned by 90°, this catch can also be used as glass shelf support. The 5–6.5 mm thick glass shelf lies firmly on the protruding nose of the catch. However, it can be removed from above at any time.

Colour	Cat. No.
White	C243.30.700
Brown	C243.30.100
Black	C243.30.300

Packing: 1 or 50 pieces