



Advantages

- Impossible to rotate nut and cage.
- Can be installed in the cutout without tools from the front as well as from behind.
- Cage made of PA is flexible and thus easy to install.
- Secure fit of the cage in the cutout through fitted square.
- Seismic-proof according to GR-63-CORE, Issue 4.
- Vibration-proof according to DIN EN 61373.
- Clamping range 1-4mm.
- For cutouts □9.5 and □9.2mm.
- Suitable for high torque and high tensile forces of up to 8 nm.

Materials

- **Cage:** PA, black
- **Nut:** steel, zinc plated white

Remarks

Installation description (1. - 6.) see www.DIRAK.com
 a) + b) configure the cage a) with the nut b).
 c) cages and nuts are packed pre-assembled per 100 in a bag.



Advantages

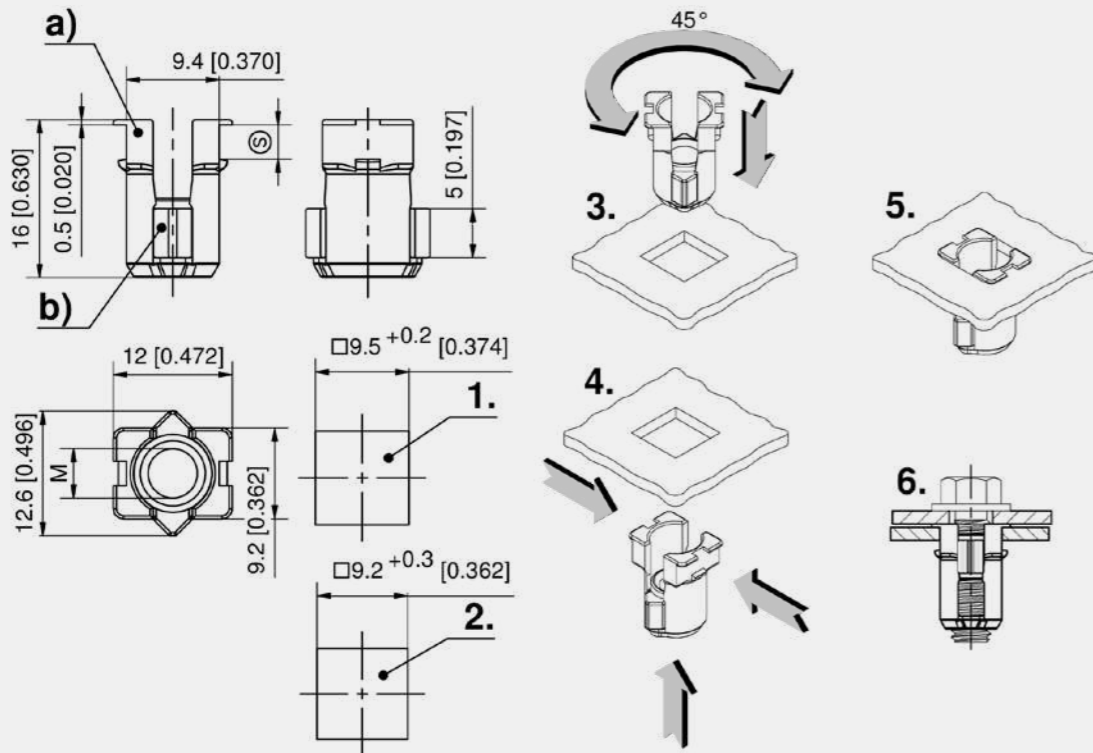
- For the secure joining of metal sheets.
- With grounding nut M6.
- Tested according to DIN EN 61439-1 (VDE 0660 part 600): 2012-06.
- Can be installed in the cutout without tools from the front as well as from behind.
- Secure fit of the cage in the cutout through fitted square.
- For cutouts □9.5 and □9.2mm.
- Suitable for high torque and high tensile force from 3 up to 8 nm.
- Cage and grounding nut packed in bulk.

Materials

- **Cage:** PA, black
- **Grounding nut:** steel, zinc plated white

Remarks

Installation description (1. - 7.) see www.DIRAK.com
Attention: The contact points must be designed in such a way that the contact pressure will not be transferred through the PA cage.
 Configure the cage a) with the grounding nut b).

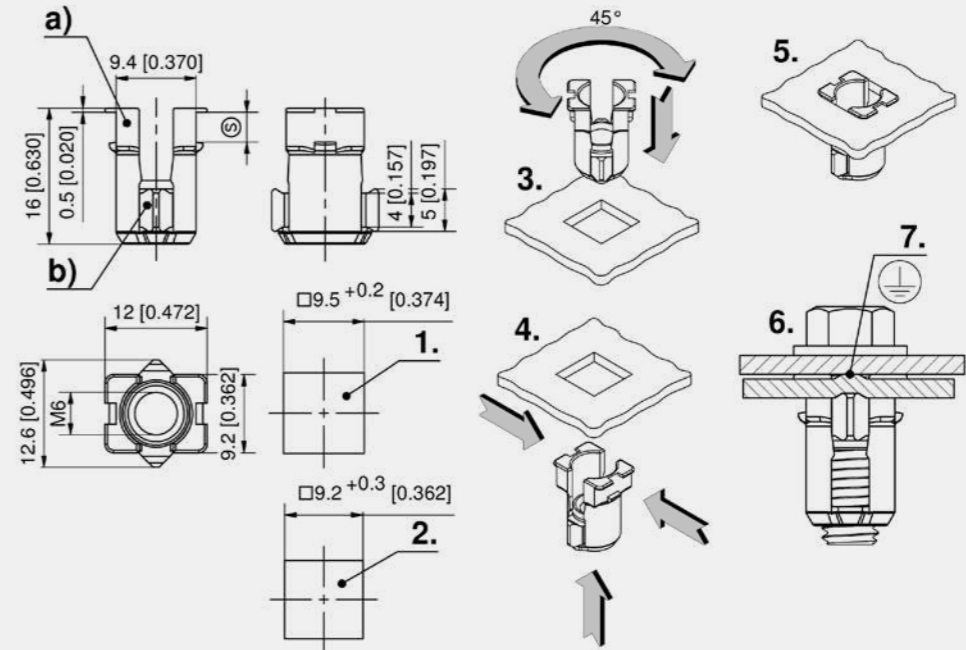


Cage nut, unmounted

	Part Number	Name	Clamping range (S)	Delivery Unit
a)	203-1901.06-00095	Cage for Nut	1 - 4 mm	2000 pcs.
b)	203-1902.15-00006	Nut M6		2000 pcs.

Cage nut, pre-assembled

	Part Number	Thread size	Clamping range (S)	Delivery Unit
c)	203-9002.00-00000	M6	1 - 4 mm	100 pcs.



Cage nut, unmounted

	Part Number	Name	Clamping range (S)	Delivery Unit
a)	203-1901.06-00095	Cage for Nut	1 - 4 mm	2000 pcs.
b)	203-1904.15-00006	Grounding nut M6		2000 pcs.





DIN 61373

RoHS WEEE



Advantages

- Ensures fixed connection of two metal sheets.
- Easy installation by pressing in square cutouts.
- Nut is moveable and adjustable in the cage until final fixing by screw.
- Seismic-proof according to GR-63-CORE, Issue 4.
- Vibration-proof according to DIN EN 61373.

Materials

- Cage:** steel, zinc plated or stainless steel AISI 304
- Nut:** steel, zinc plated or stainless steel AISI 316

Advantages

- Ensures fixed connection of two metal sheets.
- Easy installation by pressing into square cutouts.
- Nut is moveable and adjustable in the cage until final fixing by screw.
- c) and d) special design of the cage prevents from falling out of the cutout.
- Seismic-proof according to GR-63-CORE, Issue 4.
- Vibration-proof according to DIN EN 61373.

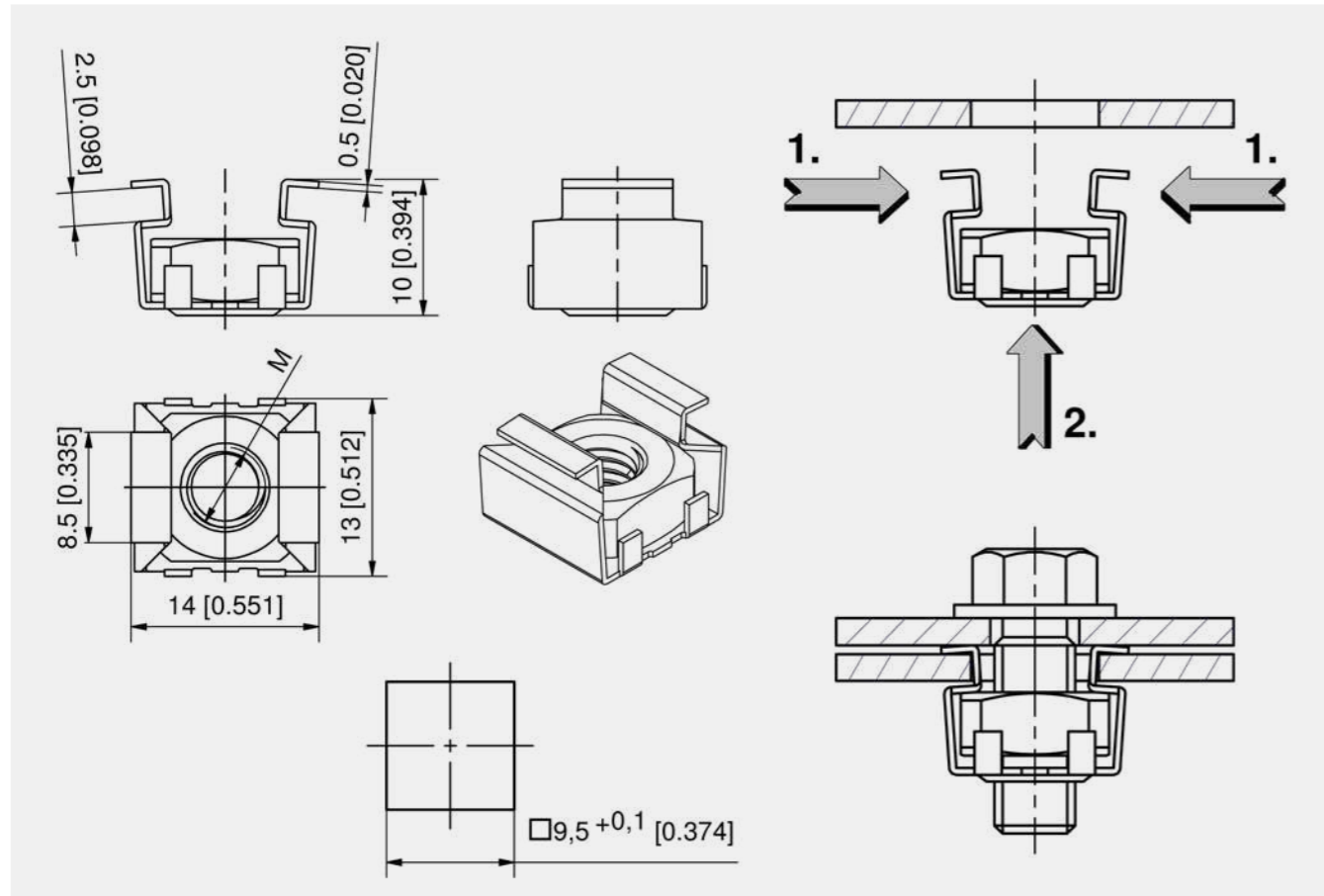
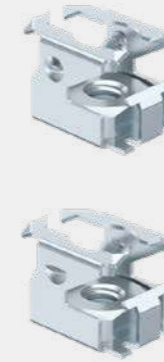
Materials

- Cage and nut:** steel, zinc plated



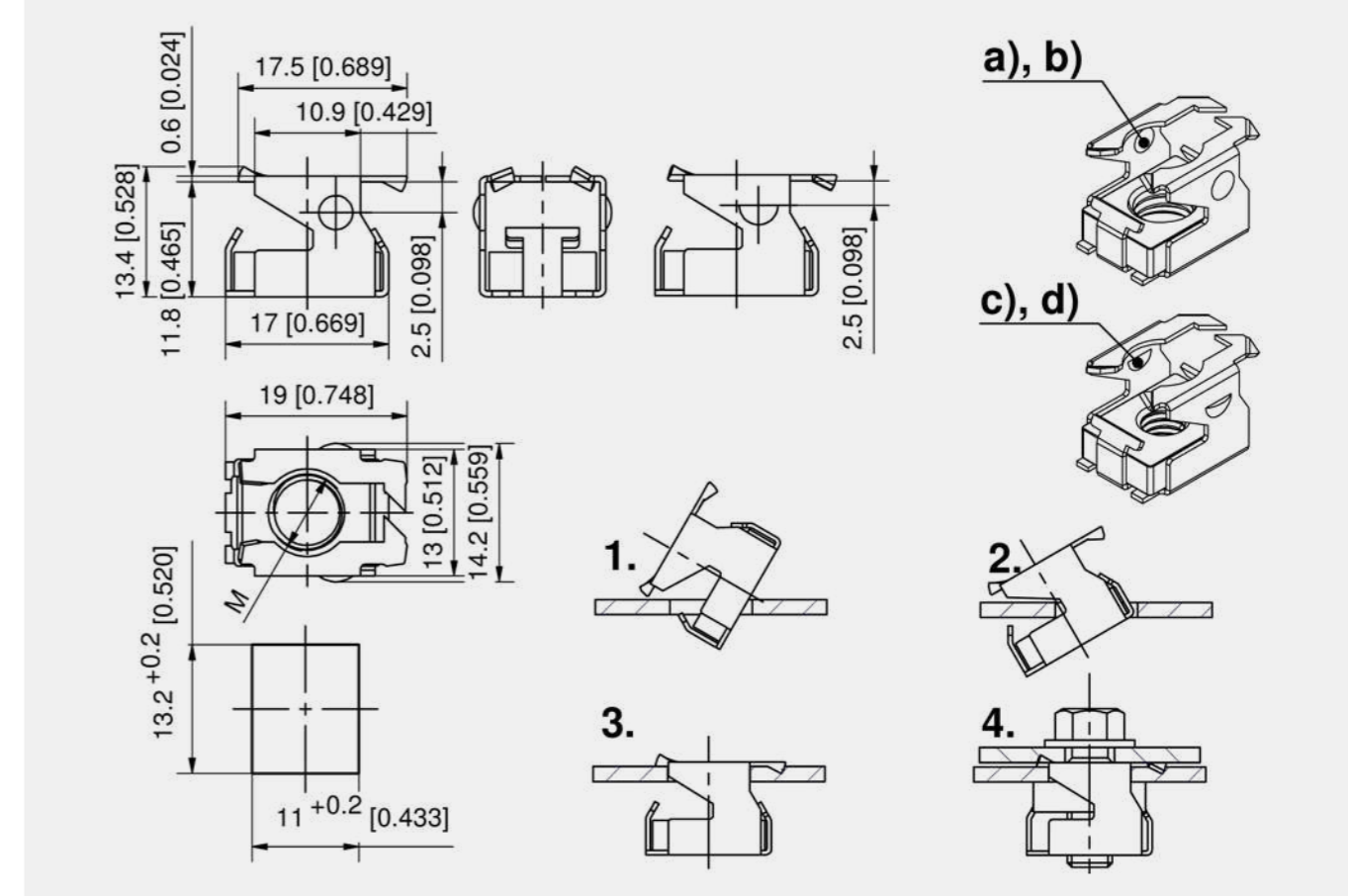
DIN 61373

RoHS WEEE



Cage nuts

Part Number	Thread size	Material	Surface	Delivery Unit
359-0250.06-00000	M5	steel	zinc plated	200 pcs.
353-2010.00-00000	M5	AISI 304		200 pcs.
359-0206.06-00000	M6	steel	zinc plated	200 pcs.



Cage nuts

	Part Number	Thread size	Delivery Unit
a)	350-2004.00-00000	M8	200 pcs.
b)	350-2005.00-00000	M6	200 pcs.
c)	350-2046.00-00000	M6	200 pcs.
d)	350-2096.00-00000	1/4-20UNC	200 pcs.

