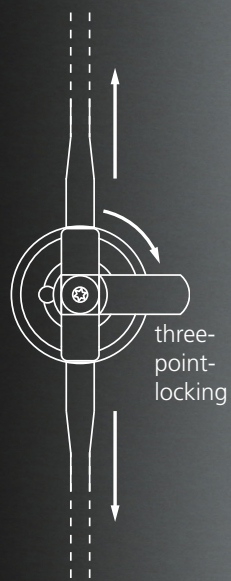
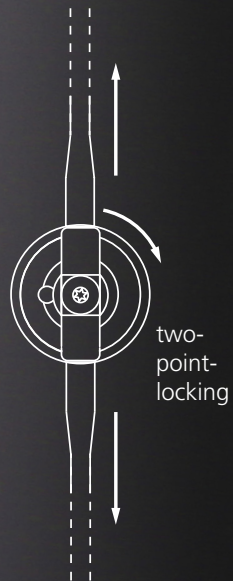


## Flexible locking options

Whether one-, two- or three-point locking - with the Flexo, the most diverse installation options can be realized, so that both drawers and double doors can be locked in the same way.

# BURG®



# FLEXO



**BURG** F.W. Lüling KG

Volmarsteiner Str. 52 • 58089 Hagen (Germany)

Fon +49 (0) 2335. 6308-0

info@burg.de • [www.burg.de](http://www.burg.de)



# Flexo.Code

The Flexo.Code impresses with intuitive operation and its ergonomic rotary knob. The user can choose from 999,999 codes.

The innovative design lock - Made in Germany - enables the secure storage of personal items in offices, schools and sports facilities.



\* Both products are available in both installation variants!



Flush-Fit\*

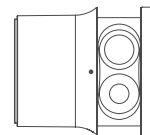
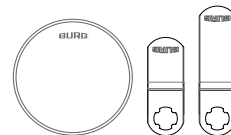
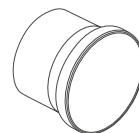
## Flexo.RFID

The Flexo.RFID (Radio Frequency Identification) was developed for the leading standards (MIFARE® Classic 1K and MIFARE® Desfire EV II). In most cases, existing RFID media can be used, because these are only read, not written.

# BURG®

## FLEXO

**The Flexo defines a new smart lock league** for exclusive furniture made of wood and steel.



### Retro-Fit

The Retro-Fit installation allows easy and almost tool-free replacement of the existing locks. Fast and cost-effective.

### Flush-Fit

The Flexo can be recessed into a furniture front and screwed in place with the Flexo.Ring. The lock stands out discreetly from the front.

### Flexibility

The Flexo can be used with all BURG steel cams. Assembly does not differ from purely mechanical solutions.

### Battery drawer

The batteries can be changed from the outside in both installation situations without having to unlock the lock.